

State of Wisconsin

County of Walworth } ss.

I, James L. Haldeman, do hereby certify that on the 7th day of March, 1921, I found evidence of the Section corner of T. 1, S. 3, R. 30, Township 31, S. 35, Range 25, Fourth Principal Meridian, as described hereon; and that from this evidence I established a new monument and accessories as described hereon to perpetuate the original location of this corner.

Resident witnesses:

CERTIFIED LAND CORNER RESTORATION

History of original corner establishment:

*Corner from
Lansing Co. Ill.*

Index No. 2-1

35-9

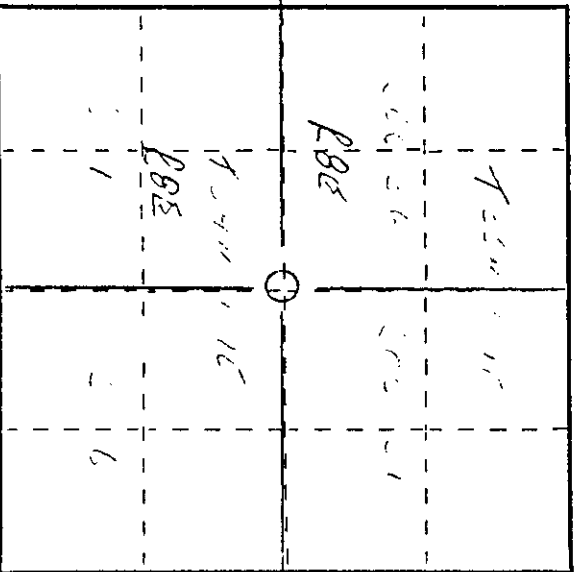
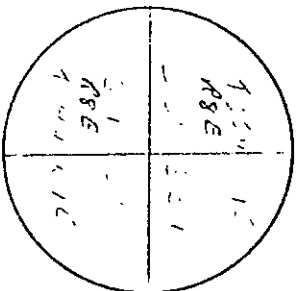
Description of corner evidence found:

2" iron pipe with br ss cap, 6" zinc cast painted white with green top, 6" x 3 1/2"
1 1/2" yellow birch 6 1/2" x 2 1/2"

Description of monument and accessories I established to perpetuate the original location of this corner.

NEW MARKS

- 1 1/2" Cedar 6 1/2" x 3 1/2"
- 1 1/2" Cedar 6 1/2" x 3 1/2"
- 1 1/2" Yellow Birch 6 1/2" x 2 1/2"



○ = Corner monument restored.

Dated at Walworth, Wis., this 7th day of March, 1921.

Signature Raymond P. DeWally Title Deputy Surveyor Registration No. 592
(County Surveyor, Registered Land Surveyor, or other duly authorized official)

Office of Register of Deeds, County of Walworth, I hereby certify that the within instrument was filed in this office for record on the 7th day of March, 1921 at 11 o'clock A.M.

(Register of Deeds)

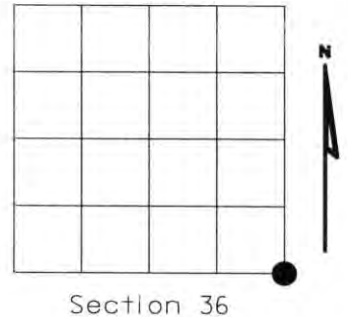
By Raymond P. DeWally Deputy

3508 SeD00000

U.S. PUBLIC LAND SURVEY MONUMENT RECORD

NOTE: This form is intended and designed to fulfill all requirements of Wisconsin Administrative Code, Chapter A-E 7.08 U.S. Public Land Survey Monument Record (3)(a)(b)(c)(d)(e)(f)(g)(h)(i). An additional sheet may be added if necessary to conform with said requirements.

(a) Corner location: Township 35 North
Range 08 East
Town of HARRISON
LINCOLN County, Wisconsin



Section 36

(b)(f)(g)(h) Description of monument found at this corner and if it was accepted, state all evidence (material, testimonial, occupational, plats, records, other monuments) used as a basis for accepting. If not accepted or if nothing was found, state evidence used as basis for establishing location. If reestablished through lost corner proportionate methods, indicate all monuments, distances and directions used to establish. Indicate type of monument found or set and sign post.

1860 - Original corner set by Alfred Millard

1981- Raymond J. Hallisy found 2" dia. iron pipe with brass cap
6" dia. pine post painted white with green top S2°E, 3.1'
Old yellow birch S43°E, 33.8'

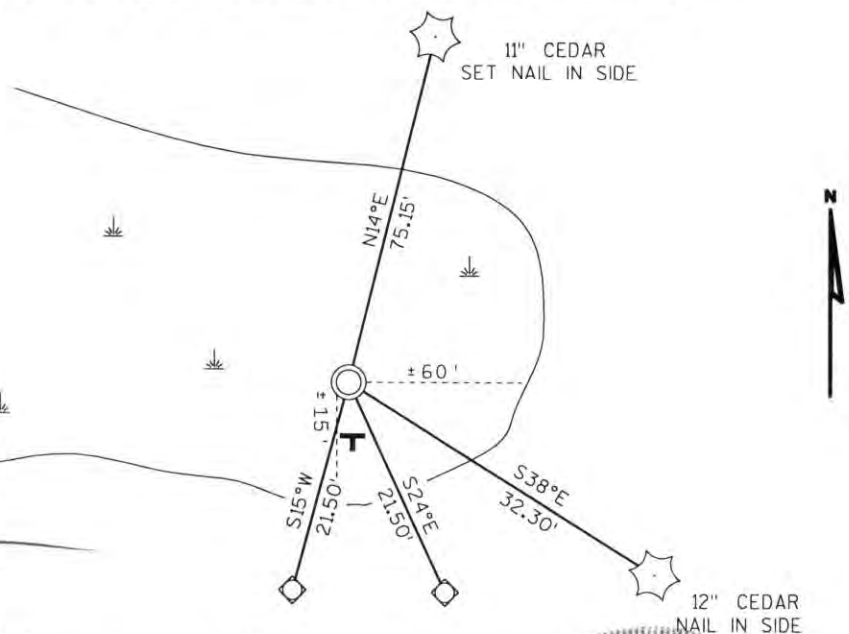
2003- I found 2" dia. iron pipe with brass cap, 6" dia. post lying down.
Plastic "T" sign 1' south
Old 20" Y. Birch BT S43°E, 33.8'.
12" Cedar with nail in side S38°E, 32.30'.
11" Cedar N14°E, 75.1'.
10" Cedar stub with nail in side S60°W, 30.6'.

Witnessed corner as shown below.

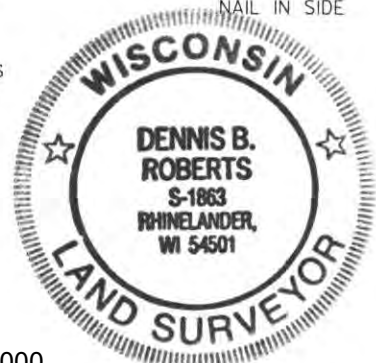
(c)(d)(e) Plan view of corner with ties to at least 4 witness monuments. If in disagreement with previously established corner, show the distances between the two corners and also indicate the ties to the disputed corner.

- ⊙ 2" DIA. IRON PIPE WITH BRASS CAP
- ◇ SET 3/4 ROD WITH ALUMINUM CAP
- T PLASTIC "T" SIGN 1' SOUTH

RECEIVED AT LINCOLN COUNTY
COURTHOUSE THIS 10TH DAY
OF May 20 03
Tony Dahn
LAND INFORMATION OFFICE



(i) I, Dennis Roberts, Registered Land Surveyor #S-1863, hereby certify that the corner location on this record was determined by me or under my direction and control and that this U.S. Public Land Survey Monument Record is correct and complete to the best of my knowledge and belief.



Dennis B. Roberts 5/02/03
Signature Date

Index No. 1-25