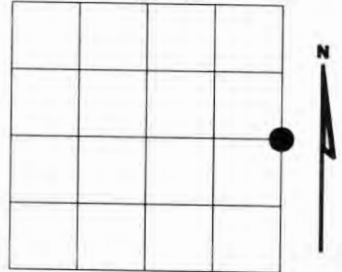




# U.S. PUBLIC LAND SURVEY MONUMENT RECORD

NOTE: This form is intended and designed to fulfill all requirements of Wisconsin Administrative Code, Chapter A-E 7.08 U.S. Public Land Survey Monument Record (3)(a)(b)(c)(d)(e)(f)(g)(h)(i). An additional sheet may be added if necessary to conform with said requirements.

(a) Corner location: Township 35 North  
Range 08 East  
Town of HARRISON  
LINCOLN County, Wisconsin



Section 36

(b)(f)(g)(h) Description of monument found at this corner and if it was accepted, state all evidence (material, testimonial, occupational, plats, records, other monuments) used as a basis for accepting. If not accepted or if nothing was found, state evidence used as basis for establishing location. If reestablished through lost corner proportionate methods, indicate all monuments, distances and directions used to establish. Indicate type of monument found or set and sign post.

1860 - Original corner set by Alfred Millard

1937- Oneida County Records- main established corner

1989- Milo E. Steffan- found main corner and accepted same set nails in side BTs.

|          |     |       |         |
|----------|-----|-------|---------|
| W. Pine  | 10" | N72°E | 84.65'  |
| Tamarack | 8"  | S50°E | 125.64' |
| R. Pine  | 12" | N38°W | 157.10' |
| R. Pine  | 13" | N05°W | 126.17' |

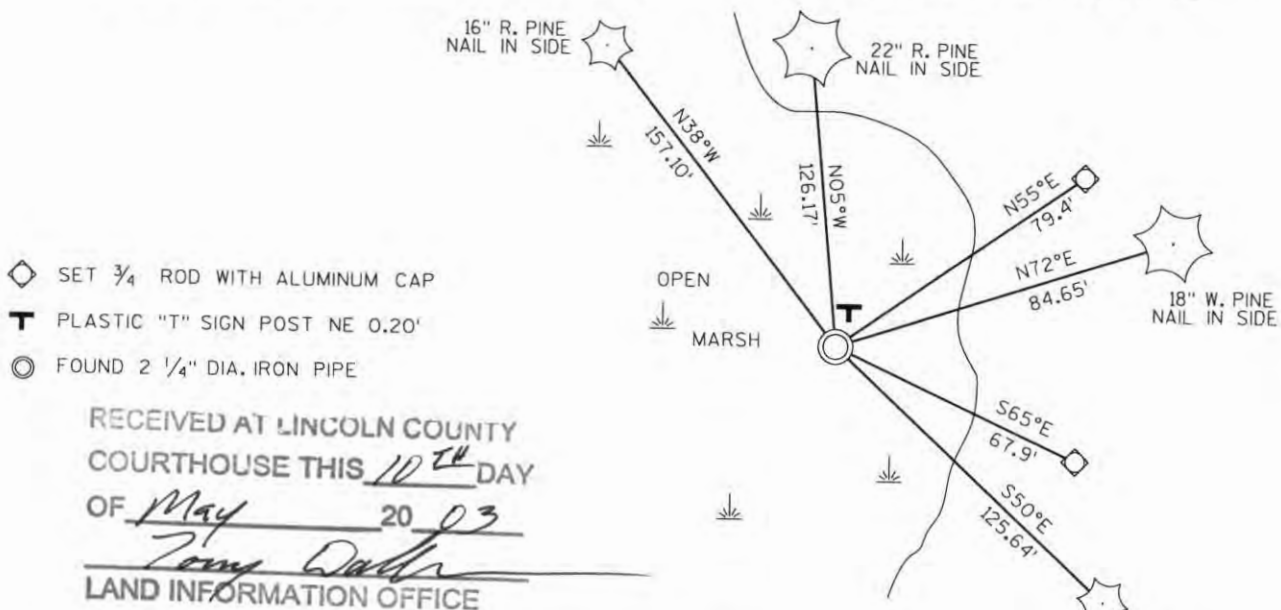
Plastic sign post next to monument.

2003- I found 2 1/4" dia. iron pipe with 2 1/4" dia. brass tablet stamped.



Witnessed corner as shown below.

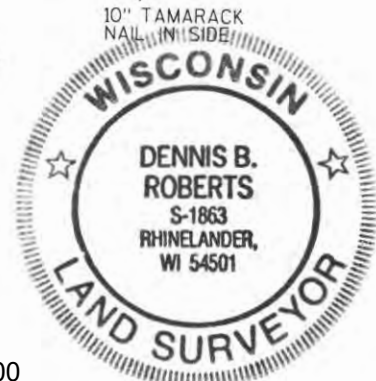
(c)(d)(e) Plan view of corner with ties to at least 4 witness monuments. If in disagreement with previously established corner, show the distances between the two corners and also indicate the ties to the



RECEIVED AT LINCOLN COUNTY  
COURTHOUSE THIS 10<sup>TH</sup> DAY  
OF May 20 03  
Zony Dahr  
LAND INFORMATION OFFICE

(i) I, Dennis Roberts, Registered Land Surveyor #S-1863, hereby certify that the corner location on this record was determined by me or under my direction and control and that this U.S. Public Land Survey Monument Record is correct and complete to the best of my knowledge and belief.

Dennis B. Roberts Signature  
5/02/03 Date



Index No. W-25