

This form is intended to fulfill the requirements of Chapter A-E 7.08 (3)(a) thru (i) U.S. Public Land Survey Monument Location Record, Wisconsin Administrative Code. Use the reverse side of form for continuation.

U.S. PUBLIC LAND SURVEY MONUMENT LOCATION RECORD

USPLS CORNER: NORTH 1/4 CORNER SECTION: 36 TOWNSHIP: 35 NORTH RANGE: 9 EAST

NAME OF WATERWAY FOR M.C. CORNER : N/A SECTION LINE: N/A

~~(CITY)(VILLAGE)(TOWN)~~ OF: ENTERPRISE COUNTY OF: ONEIDA

Description of monument found or placed and all other evidence used as the basis for monument location; including monuments and related measurements required if the corner location was reestablished by lost corner proportionate methods. Also indicate name of original surveyor, original survey date and the corner monument, bearing trees, witness or other reference monuments established; including measured bearing and distance ties, from available records.

No reliable record or field evidence recovered for this corner location, so I established corner midway on a right line between found NW and NE section corners by a total station traverse detailed on the reverse of this record form, and drove a 1/2" dia. by 4.5" long tapered stainless steel pin with geared top flush in existing blacktop pavement about 1.2 feet South of centerline of 22' wide road mat. No MLR detection was witnessed within a 25' radius of corner location.

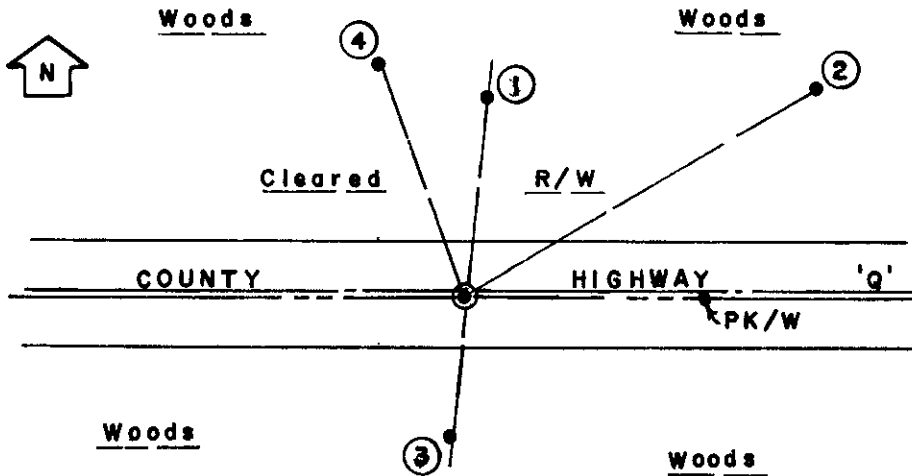
In October 1864, James L. Nowlin/GLO set a wood post as the original corner and marked OBTs: an 8" Ash S21°W 4 links and an 8" Aspen N21°E 5 links; all now gone in existing roadway. The corner post had been set at 40.40 chains from NW and NE section corners.

In May 1936, V.M. Maine/Oneida County Surveyor measured 87.60 chains (5781.6') between the NW and NE section corners, but noted no 1/4 corner found or set, per Page 86 of Maine Book 1 in Oneida County survey records. My measured distance by traverse between section corners of 5778.86' was only 2.7' shorter than Maines measure in 1936, so I am confident of data for corner establishment purposes.

I painted a blaze orange cross and 1/4S on pavement at the corner pin location and set a standard white poly 'T' marker post 6" South of the South rebar reference monument.

This recovery completed September 10, 2002; there were no direct witnesses other than vehicle drive-bys.

Plan view map of monument location with bearing and distance ties to a minimum of four(4) described witness or reference monuments of concrete, natural stone, iron, live bearing trees or equivalent material. If applicable, also show a minimum of two(2) bearing and distance ties to any other monument found and not accepted; including the bearing and distance from the accepted monument.



WITNESS MONUMENT TIES:

- ① 5/8" dia. by 24" long rebar set 2" up with yellow poly RM cap N07°E 41.80'.
- ② New BT 10" Mr N59°E 84.70'.
- ③ 5/8" dia. by 24" long rebar set 2" up with yellow poly RM cap S07°W 29.25'.
- ④ New BT 8" Mr N20°W 51.83'.

Note:
A 1/4" dia. by 2.5" long PK nail with a 1.25" dia. steel washer was set in the blacktop pavement by traverse on the intervening section line 50.05' East of corner location.

SCALE: 1" = 40'

Unless otherwise indicated, all bearing tree ties are to a .25" dia. by 2.5" long PK nail with a 1.25" dia. steel washer driven into unblazed right face and a .25" dia. by 2.5" long PK nail with a 2" dia. steel washer stamped BT is also driven into unblazed face of bearing tree at DBH; the basis for measured bearings is by compass to nearest degree and all tie distances are measured horizontal by steel tape corrected to nearest 1/100th feet at standard temperature of 68° F.

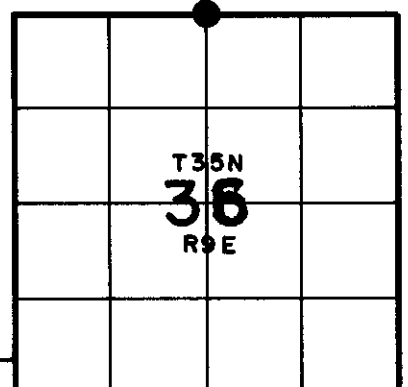
RLS SEAL:



LAND SURVEYOR CERTIFICATE:

I, William C. Rohde, hereby certify that I am duly licensed as a Professional Land Surveyor in the State of Wisconsin; that this USPLS monument location was determined by me and/or under my direct supervision and control; and that this U.S. Public Land Survey Monument Location Record is true and correct to the best of my knowledge and belief.

Signed: *William C. Rohde*
William C. Rohde RLS 841



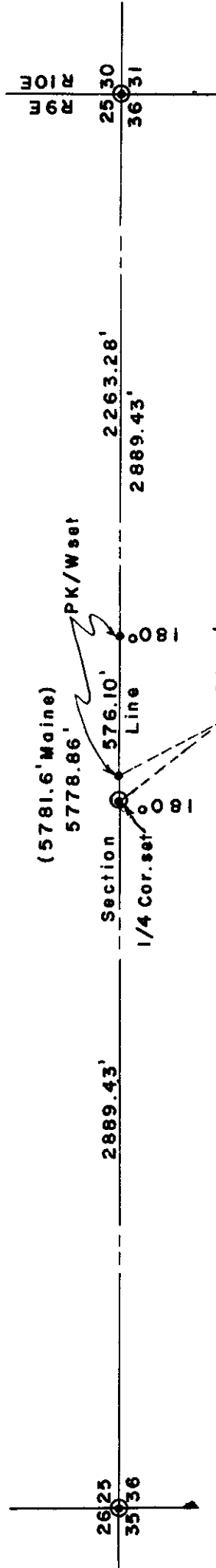
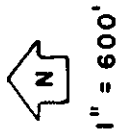
SECTION LOCATION MAP
INDEX NO. V-23

Date Signed: March 1, 2003

3509250020



Stock No. 26273



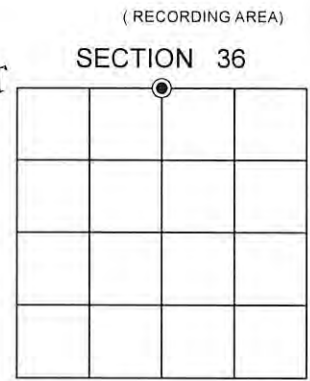
NOTE: Traverse data by Topcon Total Station.

U.S. PUBLIC LAND SURVEY MONUMENT RECORD ADDENDUM

Note: This form is intended and designed to fulfill all requirements of the Wisconsin Administrative Code, Chapter A-E 7.08 U.S. Public Land Monument Record (3)(a)(b)(c)(d)(e)(f)(g)(h)(i). An additional sheet may be added if necessary to conform with said requirements.

(a) CORNER LOCATION:

North Quarter Corner of Section 36	North:
Township 35 North	East:
Range 9 East	Datum:
Town of Enterprise	GNSS Method:
County of Oneida	GNSS Control:



(b) HISTORY OF ORIGINAL CORNER ESTABLISHMENT

Original Surveyor:
Date of Survey: Commenced _____
Completed _____
Original B.T.'S _____

SEE PREVIOUS U.S.P.L.S. MONUMENT RECORD DATED MARCH 1, 2003

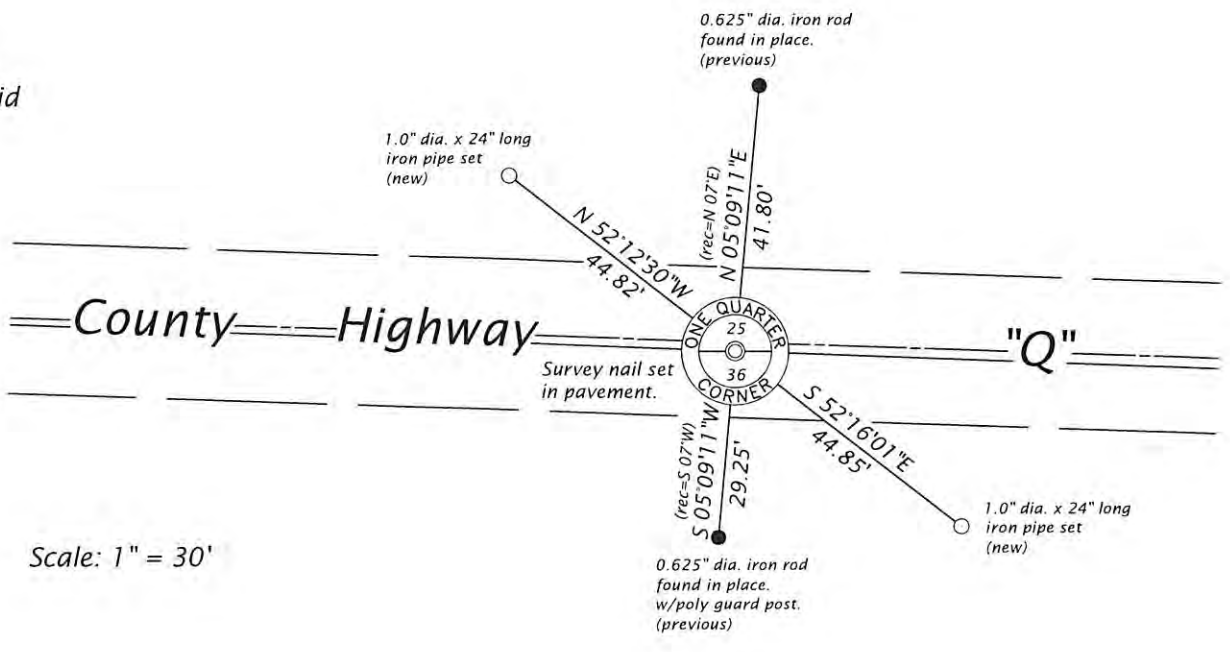
(f)(g)(h) DESCRIPTION OF MONUMENT FOUND AT THIS CORNER AND IF IT WAS ACCEPTED, STATE ALL EVIDENCE (MATERIAL, TESTIMONIAL, OCCUPATIONAL, PLATS, RECORD, OTHER MONUMENTS) USED AS A BASIS FOR ESTABLISHING LOCATION. IF NOT ACCEPTED OR IF NOTHING WAS FOUND, STATE EVIDENCE USED AS BASIS FOR ESTABLISHING LOCATION. IF REESTABLISHED THROUGH LOST CORNER PROPORTIONATE METHODS, INDICATE ALL MONUMENTS, DISTANCES AND DIRECTIONS USED TO ESTABLISH. INDICATE TYPE OF MONUMENT AND SIGN POST FOUND OR SET.

This is a perpetuation of a previous U.S.P.L.S. Monument Record by William C. Rohde, RLS-0841, dated March 1, 2003, and filed in the office of the Oneida County Register of Deeds. A complete history of the corner can be found on the previous monument record. I accept the previous location as a true and faithful perpetuation or reestablishment of the original corner location and further perpetuate it as follows.

November 1, 2024, James D. Rein, PLS No. S-1234, we found and I accepted the southerly 0.625" dia. iron rod witness monument with poly "T" guard post. We set a mag nail in the pavement at record position from the northerly 0.625" dia iron rod witness monument. The northwesterly and northeasterly maples are now gone. We further perpetuate it as shown in the plan. See below for 2 additional witness monuments and updated ties to the recovered references.

(c)(d)(e) PLAN VIEW OF CORNER WITH TIES TO AT LEAST 4 WITNESS MONUMENTS. IF IN DISAGREEMENT WITH PREVIOUSLY ESTABLISHED CORNER, SHOW THE DISTANCE BETWEEN THE TWO CORNERS AND ALSO INDICATE THE TIES TO THE DISPUTED CORNER.

Bearings are
Oneida County Grid



Scale: 1" = 30'

(i) I, JAMES D. REIN, PROFESSIONAL LAND SURVEYOR NO. S-1234 HEREBY CERTIFY THAT THE CORNER LOCATION ON THIS RECORD WAS DETERMINED BY ME OR UNDER MY DIRECTION AND CONTROL AND THAT THIS U.S. PUBLIC LAND SURVEY MONUMENT RECORD IS CORRECT AND COMPLETE TO THE BEST OF MY KNOWLEDGE AND BELIEF.



James D. Rein 11/07/24
SIGNATURE DATE

INDEX NO. V - 23
3509250020