

CERTIFIED LAND CORNER RESTORATION

Index No. J-21

State of Wisconsin

County of Oneida

} ss.

I, Phillip T. Hansen, do hereby certify that on the 6th day of March, 1978, I found evidence of the Section Corner corner of 11 - 12 - 13 - 14 Township 35, North, Range 10 East, Fourth Principal Meridian,

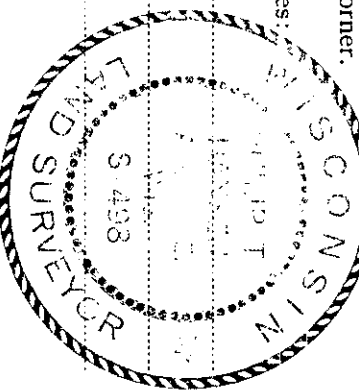
as described hereon; and that from this evidence I established a new monument and accessories as described hereon to perpetuate the original location of this corner.

Resident witnesses:

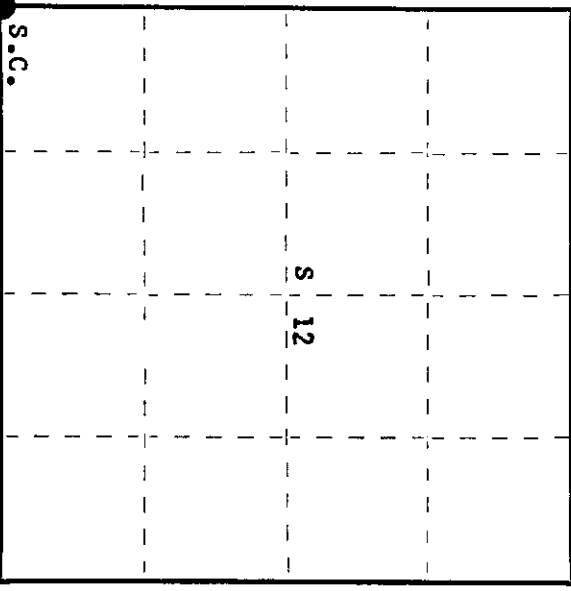
Glen Barker

Jim Claflin

Herb Wagoner



T35N R10E



O = Corner monument restored.

History of original corner establishment:

Corner established by James C. Nowlin, Government Deputy Surveyor, in 1865, from which Birch 6" bears N75°W, 13 links; birch 5" N35°E, 20 links.

Corner recovered by H.C. Lawrence, Registered Land Surveyor, in 1959. Set new cedar post by old one.
No BT's.

Description of corner evidence found:

Recovered H.C. Lawrence's 4" cedar post, squared and scribed S11 - S12 - S13 - S14, standing in very poor condition.

OBT - white spruce 12" S62°W, 33.2 links, scribing partly visible
Lawrence has no record of this BT.

Description of monument and accessories I established to perpetuate the original location of this corner.

Replaced post with a 2 1/2" iron pipe with brass cap, stamped:
Projects 18" above ground.

Corner sets in alder swamp, nothing for BT's.

Set three 1 1/2" x 4" iron pipes for witness corners:

- #1 - S45°E, 25 links
 - #2 - North 40 links
 - #3 - East 30 links
- all project 18" above ground.

T35N R10E
S.C. 11+12
14+13
CPI-1978

Dated at Rhinelander, Wis., this 30th day of March, 1978.

Signature Phillip T. Hansen Title Registered Land Surveyor Registration No. S-498
(County Surveyor, Registered Land Surveyor, or other duly authorized official)

Office of Register of Deeds, County of Oneida
Instrument was filed in this office for record on the 10th day of April, 1978
at 3:30 o'clock P. M. I hereby certify that the within

Doreen Savage Kuehn
(Register of Deeds)

By _____ Deputy

351011 0006

U.S. PUBLIC LAND SURVEY MONUMENT RECORD

This form is intended and designed to fulfill all requirements of Wisconsin Administrative Code, Chapter A-E 7.08 U.S. Public Land Survey Monument Record (3) (a)(b)(c)(d)(e)(f)(g)(h)(i).

The coordinate value shown has been verified by at least one of the following methods: 1) Comparison to a previously GNSS determined published value; 2) The value is the average of two or more GNSS observations at a markedly different time; 3) One or more distances were measured back to the GNSS observed corner from temporary GNSS observed offset locations.

Oneida County
Land Information Office
Filed
8/14/2025

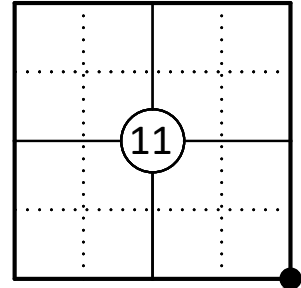
A-E 7.08(3)(a) Identity of the corner:

SE Corner Section 11
Township 35 North
Range 10 East
Town of Schoepke
County of Oneida

Original Corner Information:

Original Surveyor: J.L. Nowlin Original B.T.'s: Birch 6" - N75°W, 13 links
Date of Survey: 1865 Birch 5" - N35°E, 20 links

Corner ID: 3510110000

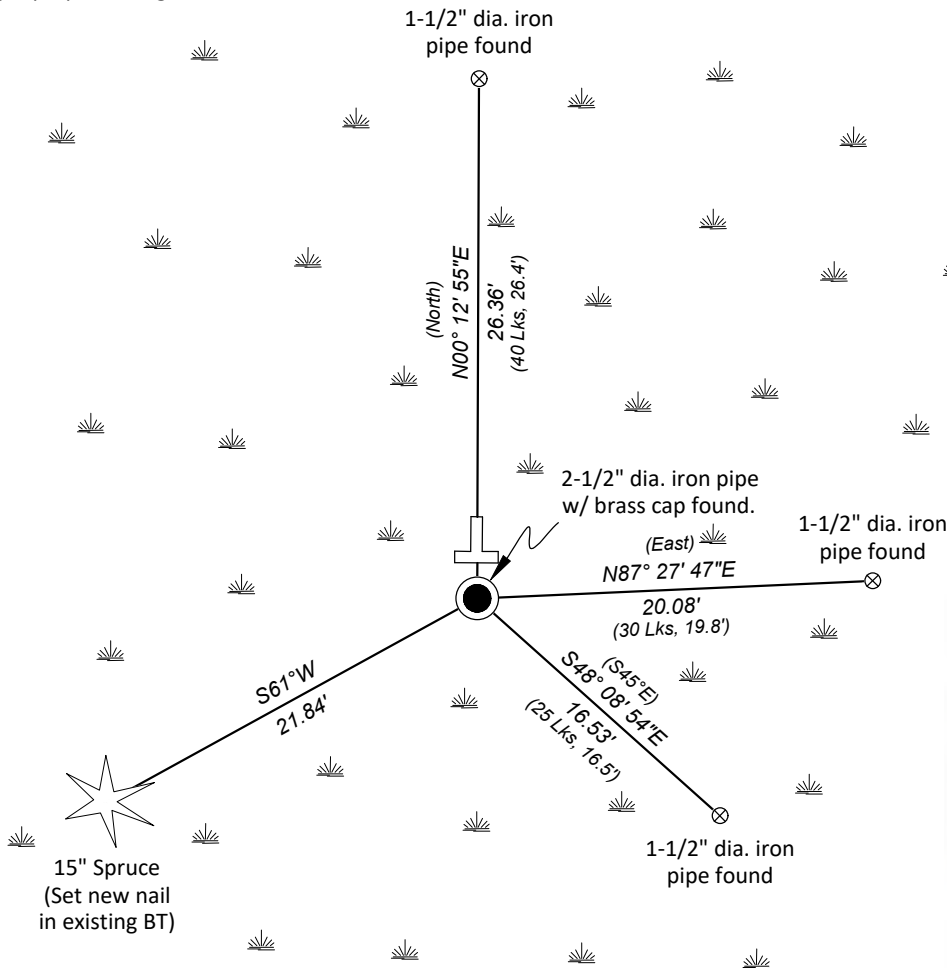


A-E 7.08(3)(b)(e)(f)(g) Describe any record evidence, monument evidence, occupational evidence, testimonial evidence or any other material evidence considered. Describe any discrepancy between the corner restored and any previously established location. State whether the corners was restored through acceptance of obliterated evidence, a found perpetuated location, or determined by proportionate methods.

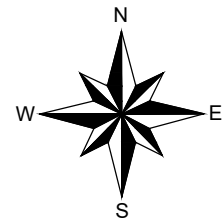
For previous corner history see monument record by Philip T. Hansen, dated March 6, 1978.

07/29/2025 I found and accepted a 2-1/2" dia iron pipe with a brass cap 4' above grade at the corner location in an alder swamp. I found 3 existing 1-1/2" dia. iron pipes and set a new nail in one existing bearing tree of unknown origin to witness the corner as shown below.

A-E 7.08(3)(c)(d)(e)(h) Plan view of corner with ties to at least four witnesses. If in disagreement with previously established corner, show the distances between the two corners and also indicate the tie to the disputed corner. Distances and directions to other PLSS used as evidence or for proportioning.



Bearings given to the nearest second are Oneida County Grid all other bearings are magnetic



- * Vinyl "T" post 0.8' north of corner.
- * Distances to bearing trees are to nail in side
- * Sketch is not to scale



A-E 7.08(3)(i) - Certification

I, Gregory S. Maines, Professional Land Surveyor No. 2729, hereby certify that the corner location on this record was referenced by me or under my direction and control and that this U.S. Public Land Survey Monument Record is complete to the best of my knowledge and belief.
REF: 2025214

Index No.: