

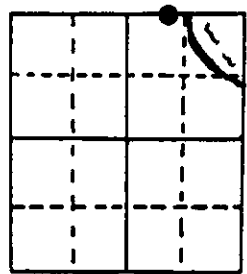
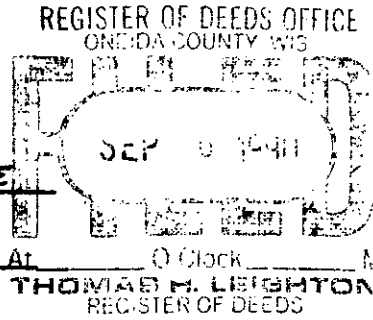
U.S. PUBLIC LAND SURVEY MONUMENT RECORD

Note: This form is intended and designed to fulfill all requirements of Wisconsin Administrative Code, Chapter A-E 7.08 U.S. Public Land Survey Monument Record (3) (a) (b) (c) (d) (e) (f) (g) (h) (i). An additional sheet may be added if necessary to conform with said requirements.

(a) Corner location: Township 35 North
 Range 10 East/West

Town/City/Village E. ENTERPRISE W. SCHOEPEKE

County ONEIDA



Section 27

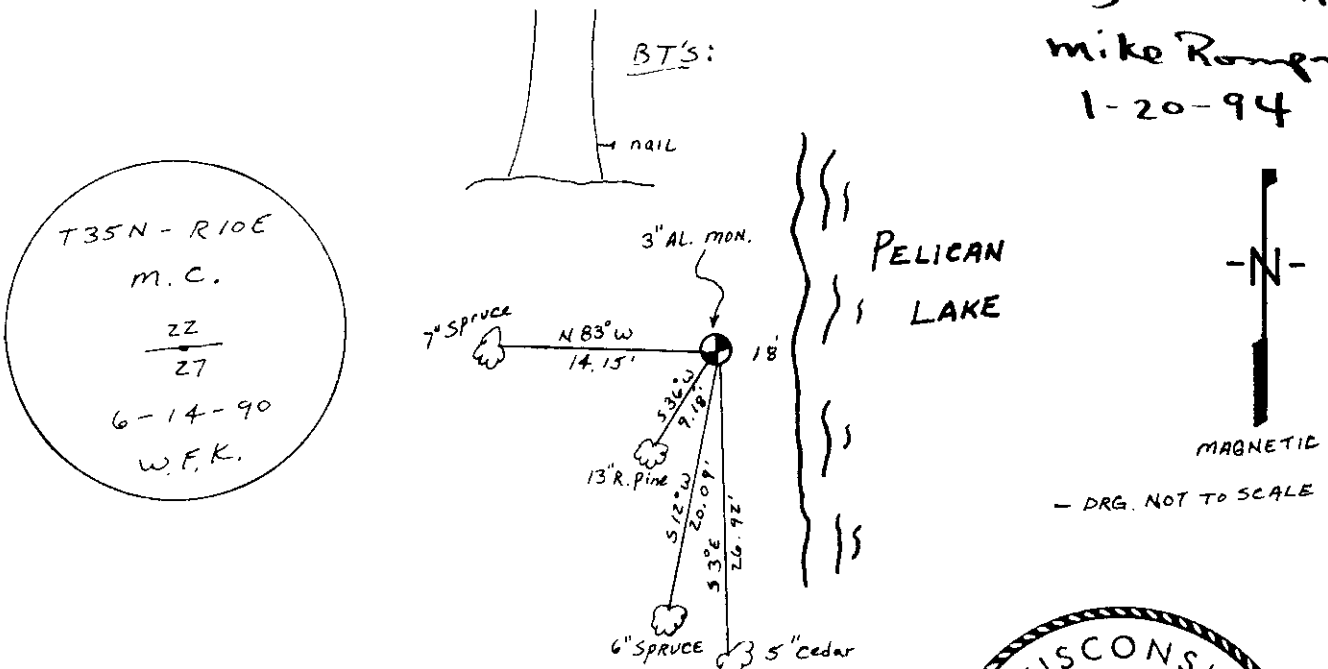
(b) (f) (g) (h) Description of monument found at this corner and if it was accepted, state all evidence (material, testimonial, occupational, plats, records, other monuments) used as a basis for accepting. If not accepted or if nothing was found, state evidence used as basis for establishing location. If reestablished through lost corner proportionate methods, indicate all monuments, distances and directions used to establish. Indicate type of monument found or set and sign post.

1865, JAMES NOWLIN ESTABLISHED ORIGINAL MEANDER CORNER; BTS: 8" W. BIRCH, S20°W, 101Ks
 7" " " N33°W, 5"

JUNE, 1990 I FOUND 1/4" PIPE, SET 3" AL. MONUMENT. PIPE IDENTIFIED BY LOCAL RESIDENT AS MEANDER CORNER - MARKED NEW WITNESS TREES

The location of this MC set by Kelly is in question. Norm Loftus is working on this. Mike Rompelt 1-20-94

(c) (d) (e) Plan view of corner with ties to at least 4 witness monuments established corner, show the distances between the two disputed corners.



(i) I, WILLIAM F. KELLY
 (type or print name) certify that the corner location on this record was determined by me or under my direction and control and that this U.S. Public Land Survey Monument Record is correct and complete to the best of my knowledge and belief.

William F. Kelly 8-28-90
 Signature Date



Stamp
 3510220012

Index No. R-15,16

This form is intended to fulfill the requirements of Chapter A-E 7.08 (3)(a) thru (i) U.S. Public Land Survey Monument Location Record, Wisconsin Administrative Code. Use the reverse side of form for continuation.

U.S. PUBLIC LAND SURVEY MONUMENT LOCATION RECORD

Recorders Data

USPLS CORNER: WEST M.C. SECTION: 27 TOWNSHIP: 35 NORTH RANGE: 10 EAST

NAME OF WATERWAY FOR M.C. CORNER : PELICAN LAKE SECTION LINE: NORTH

~~(CITY)(VILLAGE)(TOWN)~~ OF: ENTERPRISE COUNTY OF: ONEIDA

Description of monument found or placed and all other evidence used as the basis for monument location; including monuments and related measurements required if the corner location was reestablished by lost corner proportionate methods. Also indicate name of original surveyor, original survey date and the corner monument, bearing trees, witness or other reference monuments established; including measured bearing and distance ties, from available records.

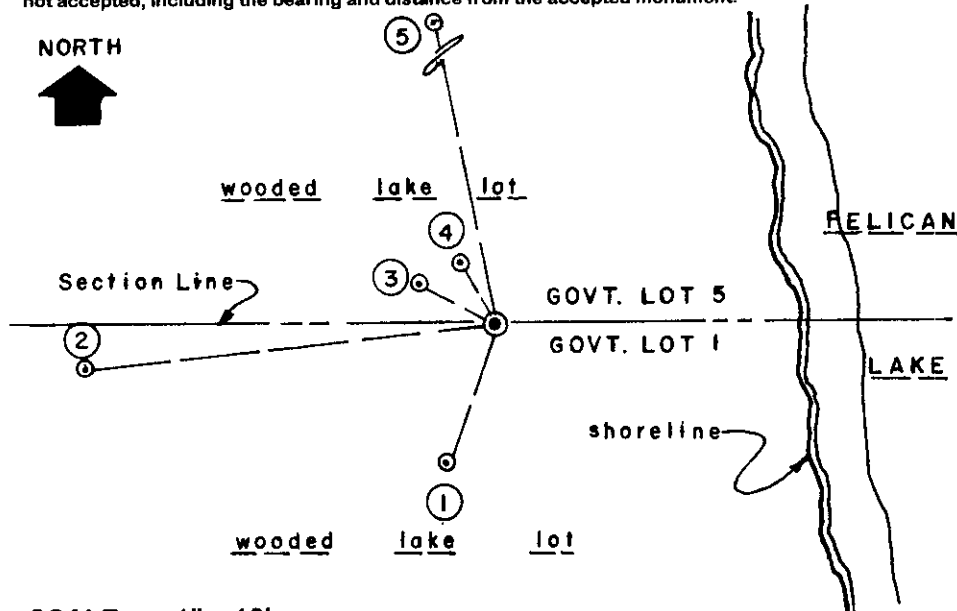
THIS CORNER RECOVERED AND REFERENCED AS THE CORRECT MEANDER CORNER LOCATION AT THE REQUEST OF AND APPROVAL BY ONEIDA COUNTY SURVEYOR MICHAEL ROMPORTL.

In 1865, James Nowlin/GLO set a wood post as the original meander corner and marked OBTs: an 8" Bw S20°W 10 links and a 7" Bw N33°W 5 links, all of which are now obliterated. In 1945, A.J. Lytle noted he had set a new wood post at this corner and marked BTs: an 8" Bw S25°E 9 links and an 8" Bw N9°W 6 links, which are all now obliterated; however, it is believed from subsequent notes in Oneida County records that the corner post by Lytle was more than likely replaced by an iron pipe, now found as a 1.25" dia. with a hex head pipe cap at top 3" above grade, with a hole in its center and showing evidence of having been painted red, and with an old 3" dia. wood marker post flat on grade along side.

Ms Ann Clark, owner of the land parcel immediately northwest of the meander corner, at Fire No. 2574, also pointed out the above described iron pipe monument to me as being the SE corner of said parcel, which I confirmed by reference to the description contained in the related record deed. Sectional survey control computations by the Oneida County Surveyor also confirmed this location for the corner by traverse from a standard aluminum pipe monument found at the NE corner of this parcel, which was erroneously set and referenced by William F. Kelly, RLS 1098, in 1990 as the West M.C. in place of a 1.25" dia. iron pipe he had found and "identified by local resident as the meander corner".

I therefore hammered out the erroneous stampings on the latter Oneida County capped monument and re-stamped it "S11°E 137.4 Ft. to M.C." as a witness monument to the correct meander corner location as further referenced below. This recovery completed August 26, 1999; there were no other direct witnesses.

Plan view map of monument location with bearing and distance ties to a minimum of four(4) described witness or reference monuments of concrete, natural stone, iron, live bearing trees or equivalent material. If applicable, also show a minimum of two(2) bearing and distance ties to any other monument found and not accepted; including the bearing and distance from the accepted monument.



WITNESS MONUMENT TIES:

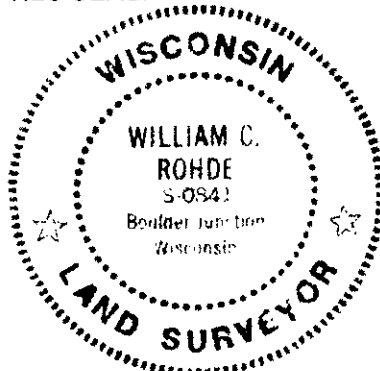
- ① New BT 7" Cedar S20°W 7.65'.
- ② New BT 10" Fir S84°W 21.41'.
- ③ New BT 7" Cedar N60°W 4.66' to PK nail/washer set in left face.
- ④ New BT 4.5" Fir N30°W 3.88'.
- ⑤ Standard 2" dia. aluminum pipe monument found with W.C. stamped Oneida County cap N11°W 137.38' by transit/tape traverse.

Corner falls 16' West of lake shore. I set a standard white poly 'T' marker post 10" East of the corner. No other evidence found nearby.

SCALE: 1" = 10'

Unless otherwise indicated, all bearing tree ties are to a .25" dia. by 2.5" long PK nail with a 1.25" dia. steel washer driven into unblazed right face and a .25" dia. by 2.5" long PK nail with a 2" dia. steel washer stamped BT is also driven into unblazed face of bearing tree at DBH; the basis for measured bearings is by compass to nearest degree and all tie distances are measured horizontal by steel tape corrected to nearest 1/100th feet at standard temperature of 68° F.

RLS SEAL:



LAND SURVEYOR CERTIFICATE:

I, William C. Rohde, hereby certify that I am duly licensed as a Professional Land Surveyor in the State of Wisconsin; that this USPLS monument location was determined by me and/or under my direct supervision and control; and that this U.S. Public Land Survey Monument Location Record is true and correct to the best of my knowledge and belief.

Signed: *William C. Rohde*
William C. Rohde RLS 841

		T 35N	
		27	
		R 10E	

SECTION LOCATION MAP

INDEX NO. R 15-16

3510220012

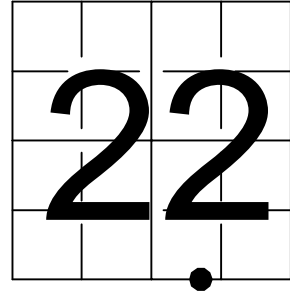
Oneida County
Land Information Office
Filed
1/12/2026

U. S. PUBLIC LAND SURVEY MONUMENT RECORD

NOTE: This form is intended and designed to fulfill all requirements of Wisconsin Administrative Code, Chapter A-E 7.08 U.S. Public Land Survey Monument Record (3) (a-i)

A-E 7.08(3)(a) Identity of corner:
Meander Corner - SOUTH line Section 22,
Township 35 North, Range 10 East
of the Fourth Principal Meridian,
Town of Enterprise, Oneida County, Wisconsin

WISCRS - ONEIDA COUNTY
N: 113,591.973 USft (XXX,XXX.XXX)
E: 312,318.584 USft (XXX,XXX.XXX)
Datum: NAD83 (2011)
GNSS Method RTN
GNSS Control WISCORS VRS



The coordinate value shown has been verified by the average of two or more GPS observations at a markedly different time. Coordinates shown in parenthesis are previously published values.

A-E 7.08(3)(b)

Original Surveyor: James L. Nowlin - September 22, 1865 to October 2, 1865
W. Birch 8 - S 20° W, 10 Links, W. Birch 7 - N 33° W, 5 Links

See previous U.S. Public Land Survey Monument Record - R 15-16 - January 19, 2000 - Surveyor 841 - William C. Rohde - THENCE:

- January 10, 2002 - Surveyor 1182 - William E. Bandow - indicates this position as "1 1/4" capped iron pipe found" on county record map #B4936.
- September 9, 2004 - Surveyor 1523 - Todd J. Loftus - indicates this position as "1.25" capped iron pipe" on county record map #L2070.
- July 7, 2006 - Surveyor 1523 - Todd J. Loftus - indicates this position as "subdivisional monument of record" on county record map #B6432.
- June 10, 2008 - Surveyor 1523 - Todd J. Loftus - indicates this position as "subdivisional mon." on county record map #A2124.
- June 15, 2009 - Surveyor 1523 - Todd J. Loftus - indicates this position as "1.75" capped iron pipe" on county record map #B7188.
- August 18, 2010 - Surveyor 1523 - Todd J. Loftus - indicates this position as "subdivisional monument of record" on county record map #A2464.
- May 26, 2011 - Surveyor 2656 - Jeffrey L. DeMuth - indicates this position as "1 1/4" diameter iron pipe" on county record map #L2765.
- July 8, 2021 - Surveyor 1523 - Todd J. Loftus - indicates this position as "subdivisional monument of record" on county record map #A3808.

December 2, 2025 - I found a 1.25" diameter iron pipe with a hex head top (top has a hole in the center). The monument is ±16 feet west of the shore of Pelican Lake and extends ±3" above grade. I also found 1 of Rohde's bearing trees alive and in good condition, and his witness corner. I established 2 new reference monuments as shown below.

A-E 7.08(3)(c)(d) Plan view of corner with references to at least 4 witness monuments.

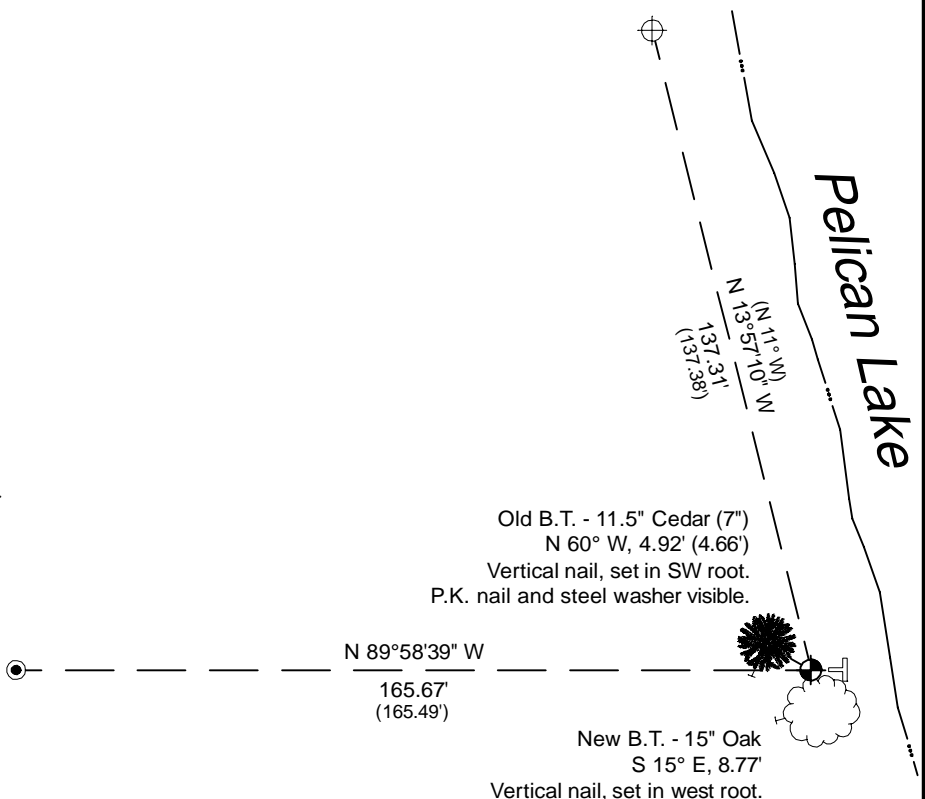
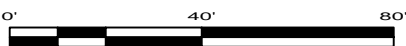


Bearings listed to the nearest second are referenced to the:
Wisconsin Coordinate Reference System,
Oneida County Zone.
All other bearings are magnetic.

LEGEND

Monument sizes = outside diameter measurements.

- This Corner
- ⊕ Aluminum witness monument, found
- ⊥ Vinyl T-post, found ±10 inches east of corner
- 1.25" diameter iron pipe, found
- ⊥ Galvanized nail, set or nail found as shown

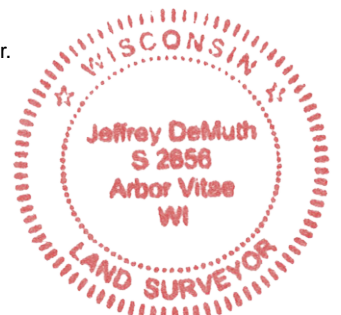


A-E 7.08(3)(e) 1865 Surveyor set a post, 2000 Surveyor found 1.25" diameter iron pipe, with a hex cap, subsequent Surveyors found the same, as did I in 2025.

A-E 7.08(3)(f) I accept this monument in good faith as a FOUND PERPETUATED LOCATION of the corner.

A-E 7.08(3)(g)(h) This corner was not determined through lost-corner-proportionate methods.

A-E 7.08(3)(i) I, Jeffrey L. DeMuth, Professional Land Surveyor No. S-2656, hereby certify that the corner location on this record was determined by me or under my direction and control, and that this U.S. Public Land Survey Monument Record is correct and complete to the best of my knowledge, and belief.



Signature

Jeffrey L. DeMuth

December 3, 2025

Date

43510220012