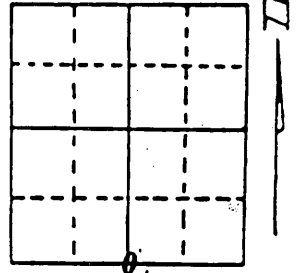
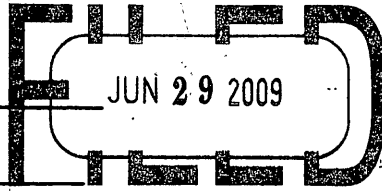


U.S. PUBLIC LAND SURVEY MONUMENT RECORD

Note: This form is intended and designed to fulfill all requirements of Wisconsin Administrative Code, Chapter A-E 7.08 U.S. Public Land Survey Monument Record (3) (a) (b) (c) (d) (e) (f) (g) (h) (i). An additional sheet may be added if necessary to conform with said requirements.

(a) Corner location: Township 35 North
 Range 10 East/West
 Town/City/Village ENTERPRISE
 County ONEIDA

REGISTER OF DEEDS OFFICE
 ONEIDA COUNTY, WIS.



At _____ O'Clock _____ M
THOMAS H. LEIGHTON
 REGISTER OF DEEDS

Section 27

(b) (f) (g) (h) Description of monument found at this corner and if it was accepted, state all evidence (material, testimonial, occupational, plats, records, other monuments) used as a basis for accepting. If not accepted or if nothing was found, state evidence used as basis for establishing location. If reestablished through lost corner proportionate methods, indicate all monuments, distances and directions used to establish. Indicate type of monument found or set and sign post.

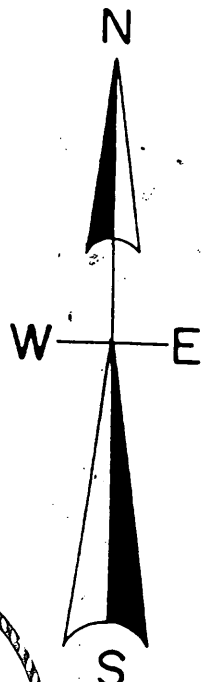
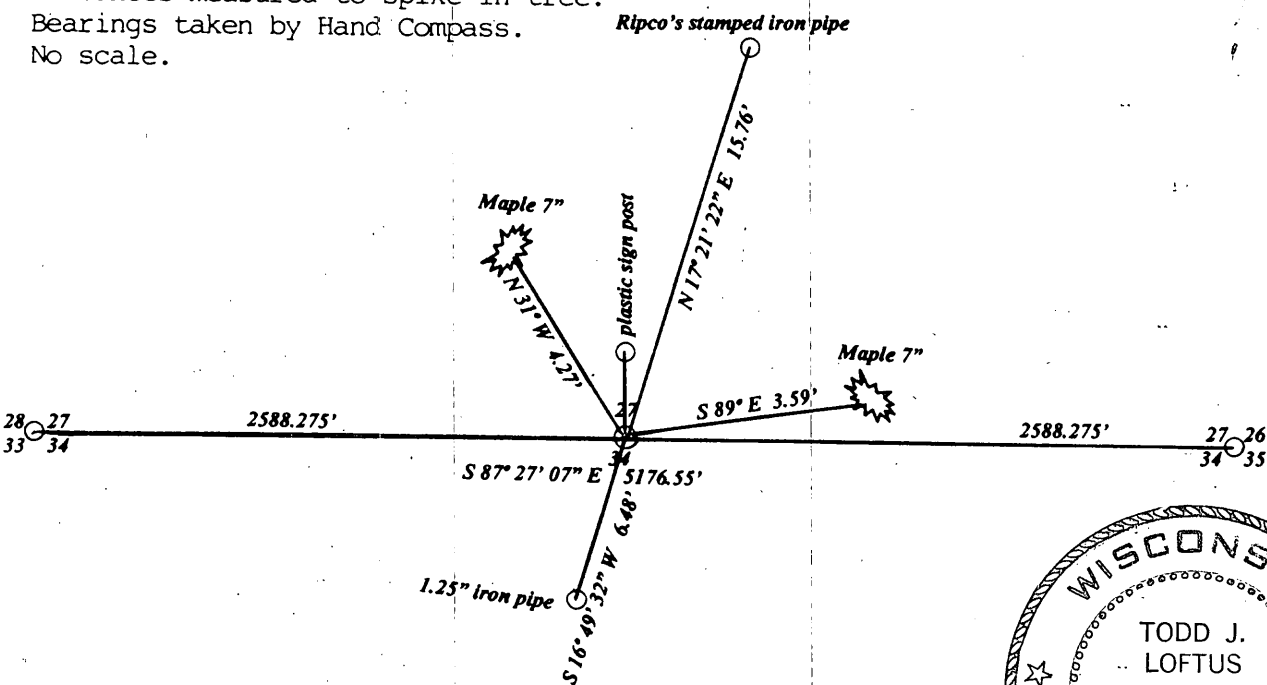
1865 JAMES L. NOWLIN established 1/4 cor. Set wood post and made BT's, Hemlock 20 S 62 W 10lks : Birch 18 N 24 E 20 lks.

June 20, 2006 I found Robert Winat's spike that he set at a midway split on the South line and his two Bearing trees from 1979. I also found Ripcos stamped Monument to the North and an iron pipe to the South which I believe to be William Kelly's.

I set a stamped Oneida County Monument in a earthen mound at the midway split of the South line section 27 by using the existing Southwest and Southeast section corners and the Oneida County Coordinate System. Robert Winat's iron spike is approximately 0.30' North of my location. The sketch below shows the accessories.

(c) (d) (e) Plan view of corner with ties to at least 4 witness monuments. If in disagreement with previously established corner, show the distances between the two corners and also indicate the ties to the disputed corner.

Distances measured to spike in tree.
 Bearings taken by Hand Compass.
 No scale.



(i) I, Todd J. Loftus
 (type or print name) certify that the corner location on this record was determined by me or under my direction and control and that this U.S. Public Land Survey Monument Record is correct and complete to the best of my knowledge and belief.

Todd J. Loftus Signature
June 29, 2006 Date

Index No. Y 15

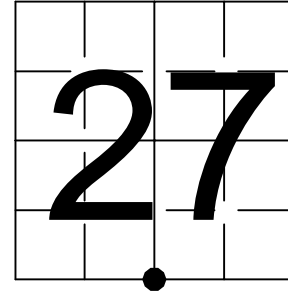
3510 27 0020
 Stamp

U.S. PUBLIC LAND SURVEY MONUMENT RECORD

NOTE: This form is intended and designed to fulfill all requirements of Wisconsin Administrative Code, Chapter A-E 7.08 U.S. Public Land Survey Monument Record (3) (a-i)

A-E 7.08(3)(a) Identity of corner:
South 1/4 Corner Section 27,
Township 35 North, Range 10 East
of the Fourth Principal Meridian,
Town of Enterprise, Oneida County, Wisconsin

WISCRS - ONEIDA COUNTY
N: 108,228.955 USft (XXX,XXX.XXX)
E: 311,439.270 USft (XXX,XXX.XXX)
Datum: NAD83 (2011)
GNSS Method RTN
GNSS Control WISCORS VRS



The coordinate value shown has been verified by the average of two or more GPS observations at a markedly different time. Coordinates shown in parenthesis are previously published values.

A-E 7.08(3)(b)

Original Surveyor: James L. Nowlin - September 22, 1865 to October 2, 1865
Hemlock 20 - S 62° W, 10 Links, Birch 18 - N 24° E, 20 Links

See previous U.S. Public Land Survey Monument Record - V 15 - June 29, 2006 - Surveyor 1523 - Todd J. Loftus - THENCE:

December 17, 2025 - I found a 2.4" diameter aluminum pipe monument with a 3.25" diameter aluminum cap by Loftus. The cap is stamped to identify the corner location. I also found a 1.75" diameter galvanized iron pipe monument with a 3.1" diameter round cap by RIPCO, also stamped to identify the corner location. I also found a 1.6" diameter iron pipe, as well as 2 existing bearing trees (presumably set by Robert Winat in 1979, and used by Loftus in 2006).

The Loftus monument is on the north face of a hill, and extends ±15" above grade.
The RIPCO monument is on the north face of a hill, and extends ±12" above grade.

I established 0 new reference monuments as shown below.

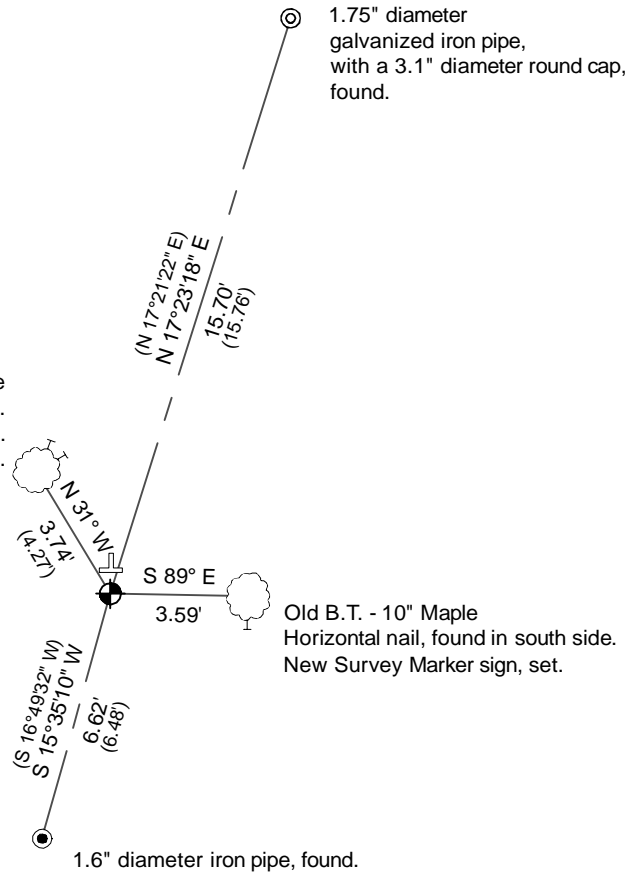
A-E 7.08(3)(c)(d) Plan view of corner with references to at least 4 witness monuments.

RIPCO monument.
1.75" diameter galvanized iron pipe, with a 3.1" diameter round cap, found.



Bearings listed to the nearest second are referenced to the: Wisconsin Coordinate Reference System, Oneida County Zone. All other bearings are magnetic.

Old B.T. - 10" Maple
Horizontal nail, found in north side.
New horizontal nail, set in NE side.
New Survey Marker sign, set.



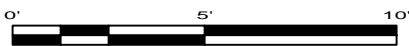
Old B.T. - 10" Maple
Horizontal nail, found in south side.
New Survey Marker sign, set.

1.6" diameter iron pipe, found.

LEGEND

Monument sizes = outside diameter measurements.

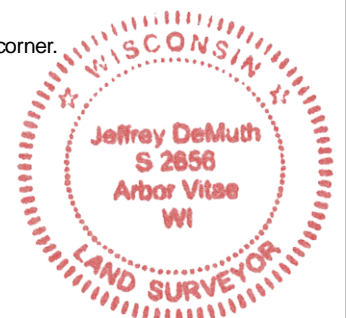
- This Corner
- ⊙ RIPCO monument, found
- 1.6" diameter iron pipe, found
- ⊥ Vinyl T-post, found ±1 feet north of corner
- Galvanized nail, set or nail found as shown



A-E 7.08(3)(e) 1865 Surveyor set a post, 2006 Surveyor ignored an existing RIPCO monument, and an existing iron pipe, and set a, stamped Oneida County monument, I found the same in 2025.

A-E 7.08(3)(f) I accept the Loftus monument in good faith as a FOUND PERPETUATED LOCATION of the corner.
A-E 7.08(3)(g)(h) This corner was previously determined through lost-corner-proportionate methods.

A-E 7.08(3)(i) I, Jeffrey L. DeMuth, Professional Land Surveyor No. S-2656, hereby certify that the corner location on this record was determined by me or under my direction and control, and that this U.S. Public Land Survey Monument Record is correct and complete to the best of my knowledge, and belief.



SIGNATURE

December 18, 2025

DATE

43510270020