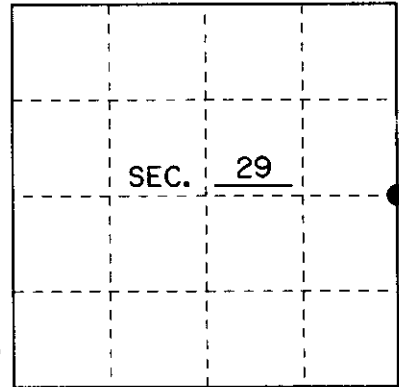


# U.S. PUBLIC LAND SURVEY MONUMENT RECORD

Note: This form is intended and designed to fulfill all requirements of Wisconsin Administrative Code, Chapter A-E 7.08 U.S. Public Land Monument Record (3)(a)(b)(c)(d)(e)(f)(g)(h)(i). An additional sheet may be added if necessary to conform with said requirements.

(a) CORNER LOCATION: EAST LINE County or State Plane Coordinates  
E 1/4 Corner of Section 29 Northing \_\_\_\_\_  
 Township 35 North Easting \_\_\_\_\_  
 Range 10 East Datum Base \_\_\_\_\_  
 Township/City ENTERPRISE County of ONEIDA



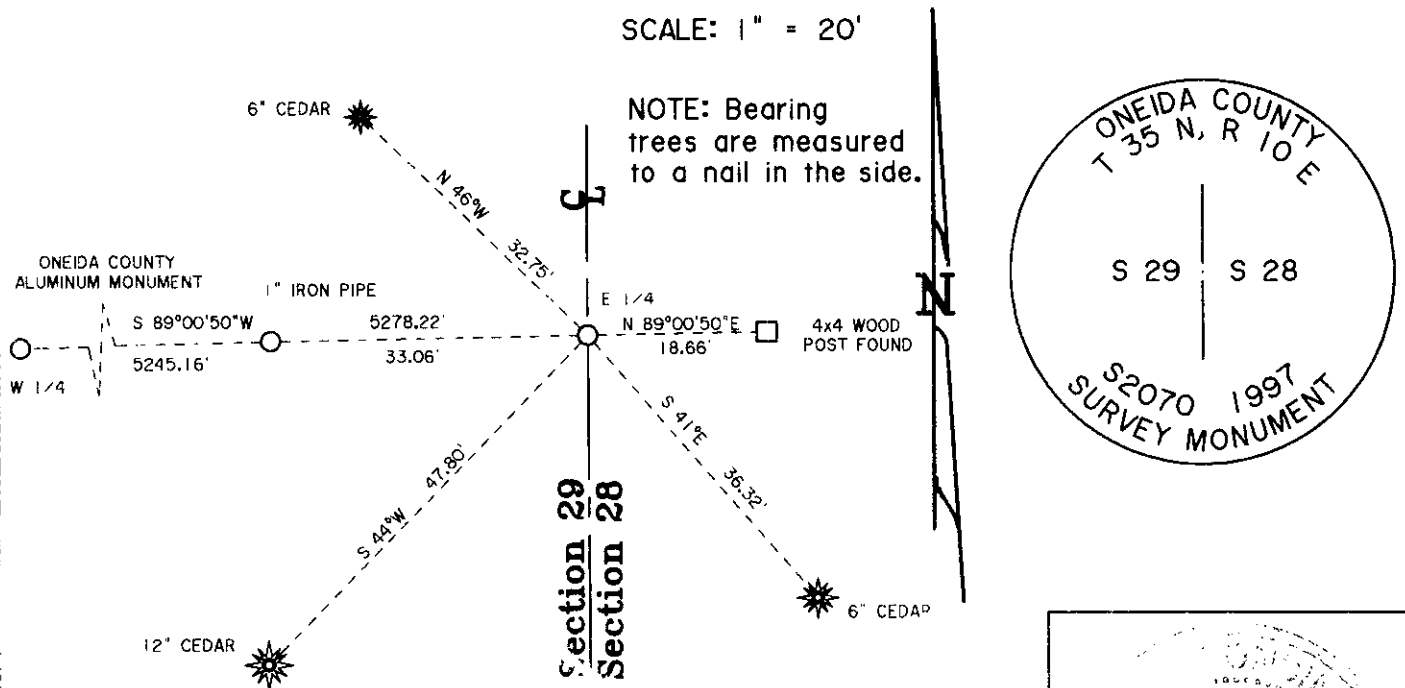
(b) HISTORY OF ORIGINAL CORNER ESTABLISHMENT Original B.T.'s  
 Original Surveyor: JAMES L. NOWLIN 12" TAMARACK N 55° E 6 Lks.  
 Date of Survey: SEPTEMBER 1865 10" TAMARACK S 55° W 4 Lks.

(b)(f)(g)(h) Description of monument found at this corner and if it was accepted, state all evidence (material, testimonial, occupational, plats, records, other monuments) used as a basis for accepting. If not accepted or if nothing was found, state evidence used as basis for establishing location. If reestablished through lost corner proportionate methods, indicate all monuments, distances and directions used to establish. Indicate type of monument and sign post found or set.

9/26/1865: JAMES L. NOWLIN SET EAST 1/4 CORNER WITH WOOD POST

12-19-97 I, MICHAEL E. WEBER FOUND NO EVIDENCE OF THE ORIGINAL CORNER. I SET A 2" x 30" ONEIDA COUNTY ALUMINUM MONUMENT AT THE CENTERLINE OF A NORTH-SOUTH ROAD, AND ON LINE BETWEEN THE W 1/4 CORNER AND A FOUND 4x4 WOOD POST EAST OF SAID NORTH-SOUTH ROAD. I SET A PLASTIC SIGN POST 11' WEST OF ONEIDA COUNTY ALUMINUM MONUMENT. I SET A 1" I.P. AND MADE THREE NEW BEARING TREES AS SHOWN BELOW.

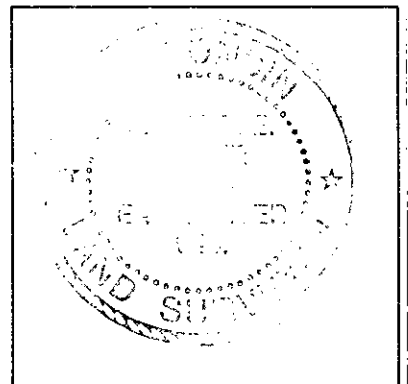
(c)(d)(e) Plan view of the corner with ties to at least 4 witness monuments. If in disagreement with previously established corner, show the distances between the two corners and also indicate the ties to the disputed.



(i) I, MICHAEL E. WEBER R.L.S. No. 2070

hereby certify that the corner location on this record was determined by me or under my direction and control and that this U.S. Public Land Survey Monument Record is correct and complete to the best of my knowledge and belief.

Signature Michael E. Weber Date 10-8-99



3510292000

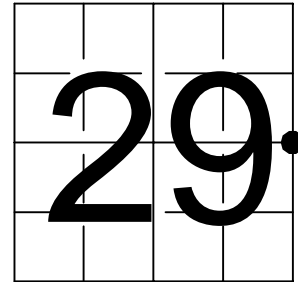
Index No. T - 9

# U.S. PUBLIC LAND SURVEY MONUMENT RECORD - ADDENDUM

NOTE: This form is intended and designed to fulfill all requirements of Wisconsin Administrative Code, Chapter A-E 7.08 U.S. Public Land Survey Monument Record (3) (a-i)

A-E 7.08(3)(a) Identity of corner:  
East 1/4 Corner Section 29,  
Township 35 North, Range 10 East  
of the Fourth Principal Meridian,  
Town of Enterprise, Oneida County, Wisconsin

WISCRS - ONEIDA COUNTY  
N: 110,989.985 USft (XXX,XXX.XXX)  
E: 303,530.100 USft (XXX,XXX.XXX)  
Datum: NAD83 (2011)  
GNSS Method RTN  
GNSS Control WISCORS VRS



The coordinate value shown has been verified by the average of two or more GPS observations at a markedly different time. Coordinates shown in parenthesis are previously published values.

A-E 7.08(3)(b)

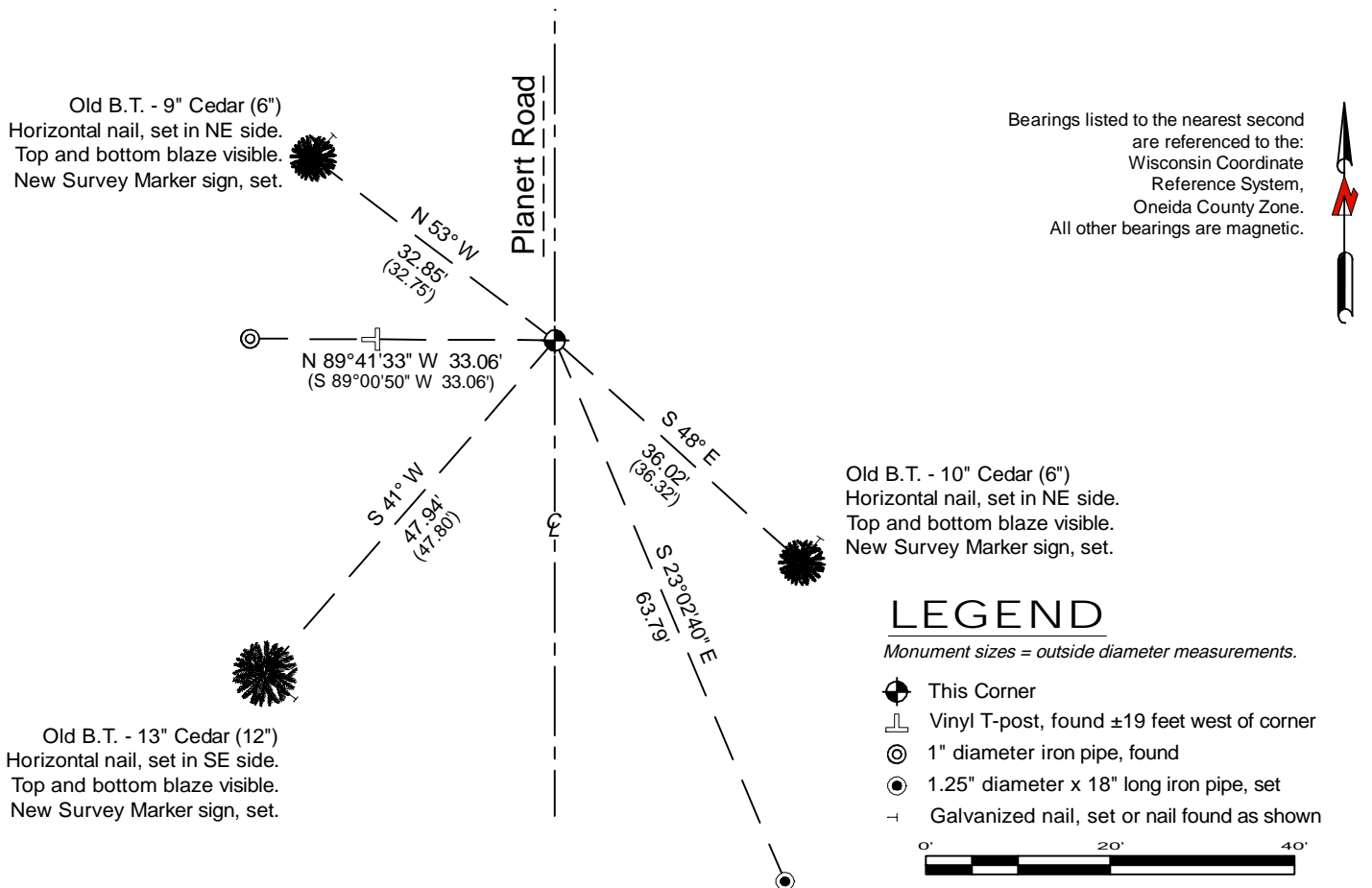
Original Surveyor: James L. Nowlin - September 22, 1865 to October 2, 1865  
Tamarac 12 - N 55° E, 6 Links, Tamarac 10 - S 55° W, 4 Links

See previous U.S. Public Land Survey Monument Record - T-9 - October 8, 1999 - Surveyor 2070 - Michael E. Weber - THENCE:

- April 3, 2000 - Surveyor 1795 - Devon Vanden Heuvel - indicates this position as "exist. county monument" on county record map #C1783.
- January 29, 2015 - Surveyor 1763 - Thomas A. Boettcher - indicates this position as "Oneida County aluminum monument found in place" on county record map #B7759.
- September 9, 2025 - Surveyor 3148-8 - Jason J. Pflieger - indicates this position as "W 1/4 per existing ties" on county record map #A4386.

October 10, 2025 - I did not find Weber's monument. I did find all of Weber's bearing trees alive and in good condition, and his 1" iron pipe shown on the previous monument record, as well as an iron pipe to the west of the North 1/16th Corner, as shown on county record Map #B7759. I set a railroad spike at the corner location based on Map #B7759. The monument is on the centerline of Planert Road, and ±6" below grade. I set a 1.25" diameter reference monument and placed new nails in the sides of the existing bearing trees as shown below.

A-E 7.08(3)(c)(d) Plan view of corner with references to at least 4 witness monuments.



A-E 7.08(3)(e) 1865 Surveyor set a post, 1999 Surveyor set an Oneida County aluminum monument, subsequent surveyors found the same. I found the corner obliterated and set a railroad spike from available evidence.

A-E 7.08(3)(f) I restored the corner through ACCEPTANCE OF AN OBLITERATED LOCATION.  
A-E 7.08(3)(g)(h) This corner was not determined through lost-corner-proportionate methods.

A-E 7.08(3)(i) I, Jeffrey L. DeMuth, Professional Land Surveyor No. S-2656, hereby certify that the corner location on this record was determined by me or under my direction and control, and that this U.S. Public Land Survey Monument Record is correct and complete to the best of my knowledge, and belief.



SIGNATURE

December 3, 2025

DATE

43510292000