

U.S. PUBLIC LAND SURVEY MONUMENT RECORD

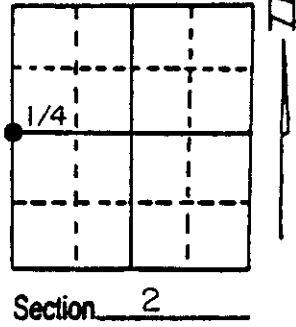
Note: This form is intended and designed to fulfill all requirements of Wisconsin Administrative Code, Chapter A-E 7.08 U.S. Public Land Survey Monument Record (3) (a) (b) (c) (d) (e) (f) (g) (h) (i). An additional sheet may be added if necessary to conform with said requirements.

(a) Corner location: Township 35 North

Range 11 East ~~West~~

Town/City/Village Schoepke

County Oneida



(b) (f) (g) (h) Description of monument found at this corner and if it was accepted, state all evidence (material, testimonial, occupational, plats, records, other monuments) used as a basis for accepting. If not accepted or if nothing was found, state evidence used as basis for establishing location. If reestablished through lost corner proportionate methods, indicate all monuments, distances and directions used to establish. Indicate type of monument found or set and sign post.

I re-established the Quarter Section Corner between Sections 2 and 3, T35N, R11E on the basis of the original calls and a personal witness. I tested the calls of the G.L.O. Survey of 1859 by Wm. E. Daugherty, Gov't Deputy Surveyor on a straight line between the northwest and the southwest Section Corner of Section 2, commencing at the northwest Section Corner south on line:

| | | | |
|---------------------------|-----------|--------------------|-----------|
| G.L.O. Leave Swamp | 16.87 chs | Retracement Survey | 17.12 chs |
| " " Right Bank Wolf River | 33.30 chs | " " | 33.33 chs |
| " " Left Bank Wolf River | 34.98 chs | " " | 34.33 chs |

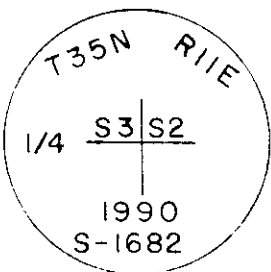
Set Quarter Section corner 36.87 chs. Re-established Dist. 36.87'.

Over the period of 131 years the river bed has been altered either by weather conditions or man. There is an old Section line road that runs north and south across the river, it appears dirt fill on the left bank has changed the river bed of this point. The corner position sets on the north edge of a cultivated field also evidence of a old fence running east. (See back side)

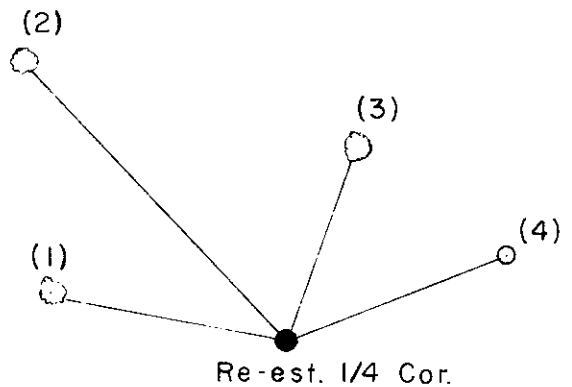
(c) (d) (e) Plan view of corner with ties to at least 4 witness monuments. If in disagreement with previously established corner, show the distances between the two corners and also indicate the ties to the disputed corner.

Set a 2-1/4" aluminum Oneida County Monument flush with the ground.

- (1) 4" White Spruce
N80°W, 38.27'
- (2) 6" Elm
N44°W, 60.02'
- (3) 8" White Spruce
N19°E, 32.00'
- (4) 1-1/4" Iron pipe
N68°E, 37.16'



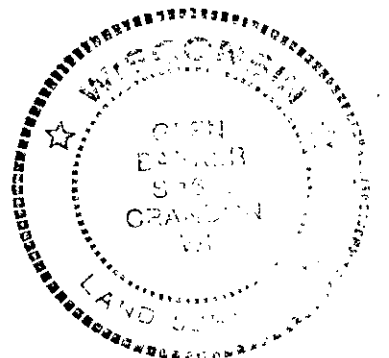
Monument set



(See back for drawing)

(i) I, Glen Barker
(type or print name) certify that the corner location on this record was determined by me or under my direction and control and that this U.S. Public Land Survey Monument Record is correct and complete to the best of my knowledge and belief.

Glen Barker 3/21/91
Signature Date

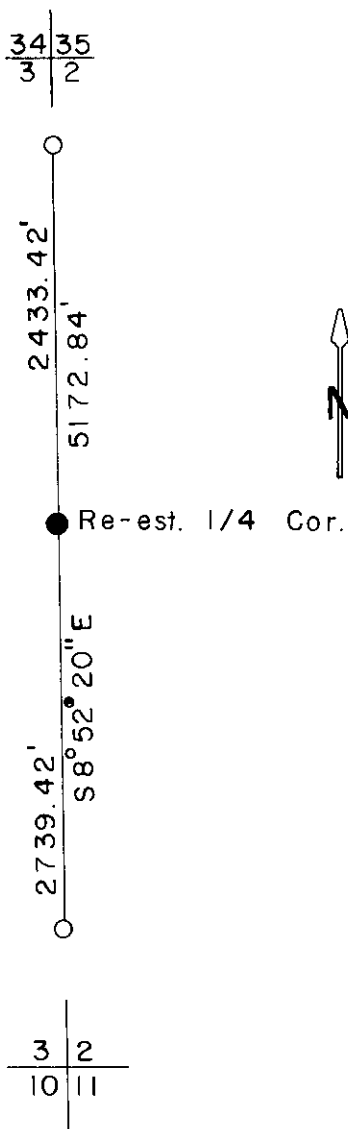


3511032000

Index No. G-17

The position of the Quarter Section Corner was shown to Mr. Frank Meister, a life time resident, he agreed it was very close to the position his father had made reference to in 1945.

Proportional measurement was not acceptable position, it would not relate to existing local conditions.



REGISTER OF DEEDS OFFICE
ONEIDA COUNTY, WIS
FILED
MAR 26 1991
At _____ O'Clock _____ M
THOMAS H. LEIGHTON
REGISTER OF DEEDS

U.S. PUBLIC LAND SURVEY MONUMENT RECORD

NOTE: This form is intended and designed to fulfill all requirements of Wisconsin Administrative Code, Chapter A-E 7.08 U.S. Public Land Survey Monument Record (3) (a-i)

A-E 7.08(3)(a) Identity of corner:
 East 1/4 Corner Section 03,
 Township 35 North, Range 11 East
 of the Fourth Principal Meridian,
 Town of Schoepke, Oneida County, Wisconsin

WISCRS - ONEIDA COUNTY
 N: 131,561.563 USft (XXX,XXX.XXX)
 E: 346,536.277 USft (XXX,XXX.XXX)
 Datum: NAD83 (2011)
 GNSS Method RTN
 GNSS Control WISCORS VRS

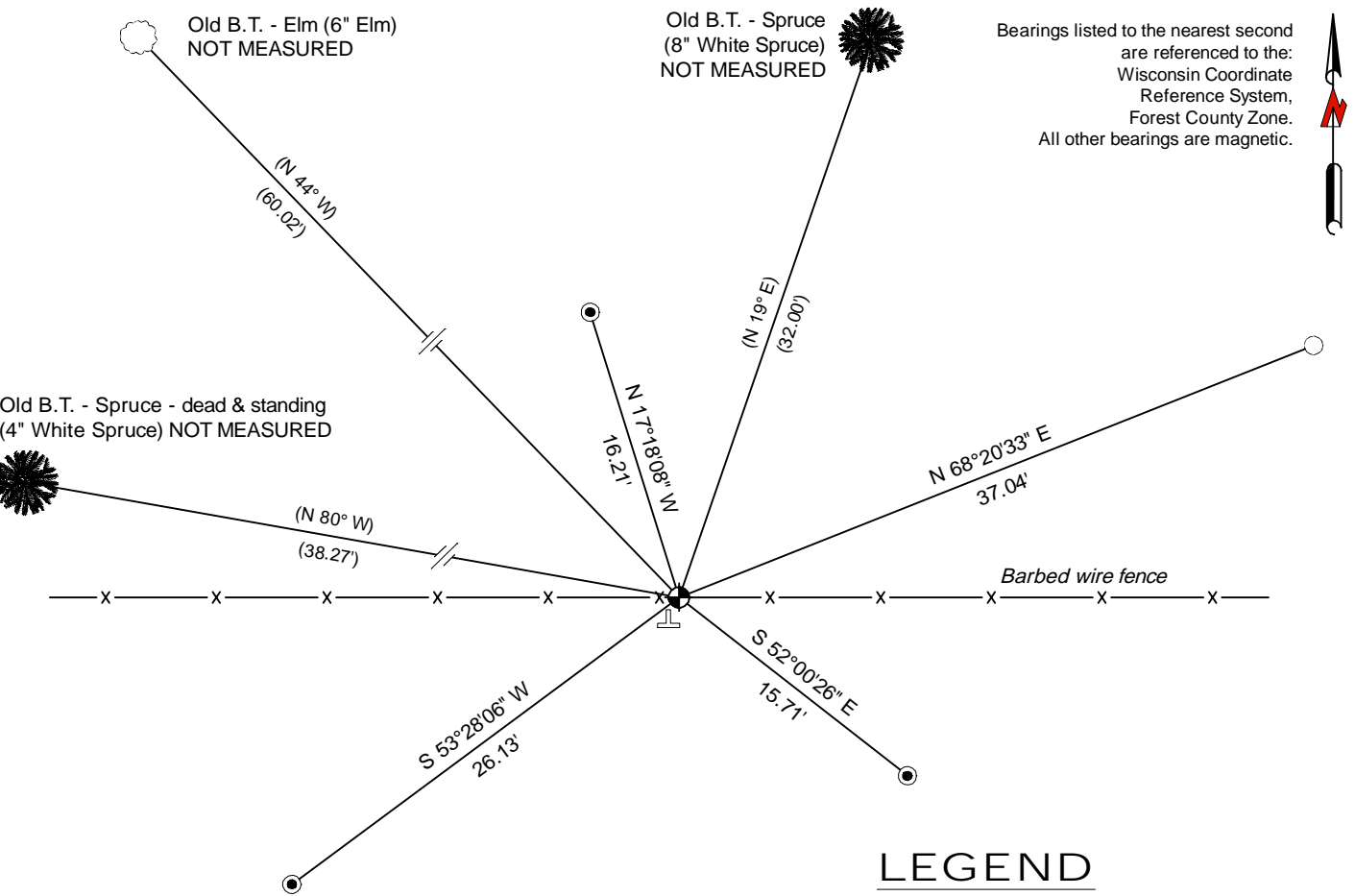
The coordinate value shown has been verified by the average of two or more GPS observations at a markedly different time. Coordinates shown in parenthesis are previously published values.

A-E 7.08(3)(b)

Original Surveyor: William E. Daugherty - July 25, 1859 to July 29, 1859
 Aspen 6 - S 33° W, 20 Links, Aspen 5 - N 64° W, 15 Links

See previous U.S. Public Land Survey Monument Record - C-17 - March 21, 1991 - Surveyor 1682 - Glen Barker - THENCE:

December 22, 2025 - I found a 3.25" diameter aluminum capped monument stamped to identify the corner location. The monument is on the north edge of a field, along an east-west barbed wire fence line, under the east edge of a wooden fence post, and is flush with grade. I also found 2 of Barker's bearing trees alive and in good condition, 1 dead and standing, and a 1.25" diameter iron pipe witness.. I established 3 new reference monuments as shown below.



A-E 7.08(3)(c)(d) Plan view of corner with references to at least 4 witness monuments.

Existing bearing trees were NOT MEASURED because they are no longer convenient to the monument.

A-E 7.08(3)(e) 1859 Surveyor set a post, 1991 Surveyor set a 2-1/4" aluminum Oneida County monument, I found the same in 2025.

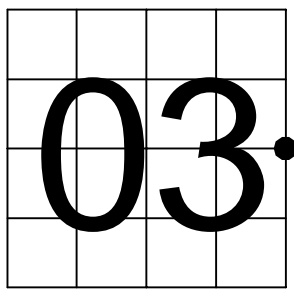
A-E 7.08(3)(f) I accept this monument in good faith as a FOUND PERPETUATED LOCATION of the corner.
 A-E 7.08(3)(g)(h) This corner was not determined through lost-corner-proportionate methods.

A-E 7.08(3)(i) I, Jeffrey L. DeMuth, Professional Land Surveyor No. S-2656, hereby certify that the corner location on this record was determined by me or under my direction and control, and that this U.S. Public Land Survey Monument Record is correct and complete to the best of my knowledge, and belief.

Jeffrey L. DeMuth
 December 23, 2025
 SIGNATURE DATE



Oneida County
 Land Information Office
 Filed
 1/12/2026



Bearings listed to the nearest second are referenced to the: Wisconsin Coordinate Reference System, Forest County Zone. All other bearings are magnetic.

LEGEND

- Monument sizes = outside diameter measurements.
 - This Corner
 - Vinyl T-post, set ±0.75 feet SW of corner
 - 1.25" diameter iron pipe, found
 - 1.25" diameter x 18" long iron pipe, set
-