

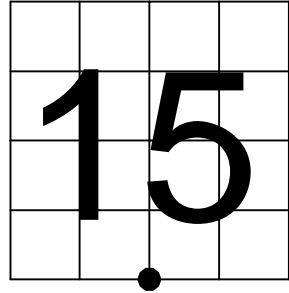
Oneida County
Land Information Office
Filed
1/12/2026

U.S. PUBLIC LAND SURVEY MONUMENT RECORD

NOTE: This form is intended and designed to fulfill all requirements of Wisconsin Administrative Code, Chapter A-E 7.08 U.S. Public Land Survey Monument Record (3) (a-i)

A-E 7.08(3)(a) Identity of corner:
South 1/4 Corner Section 15,
Township 35 North, Range 11 East
of the Fourth Principal Meridian,
Town of Schoepke, Oneida County, Wisconsin

WISCORS - ONEIDA COUNTY
N: 118,622.582 USft (XXX,XXX.XXX)
E: 344,431.032 USft (XXX,XXX.XXX)
Datum: NAD83 (2011)
GNSS Method RTN
GNSS Control WISCORS VRS



The coordinate value shown has been verified by the average of two or more GPS observations at a markedly different time. Coordinates shown in parenthesis are previously published values.

A-E 7.08(3)(b)

Original Surveyor: William E. Daugherty - July 25, 1859 to July 29, 1859
Spruce 8 - S 65° E, 12 Links, Yellow Pine 16 - N 39° W, 11 Links

See previous U.S. Public Land Survey Monument Record - N-15 - August 28, 1990 - Surveyor 1098 - William F. Kelly - THENCE:

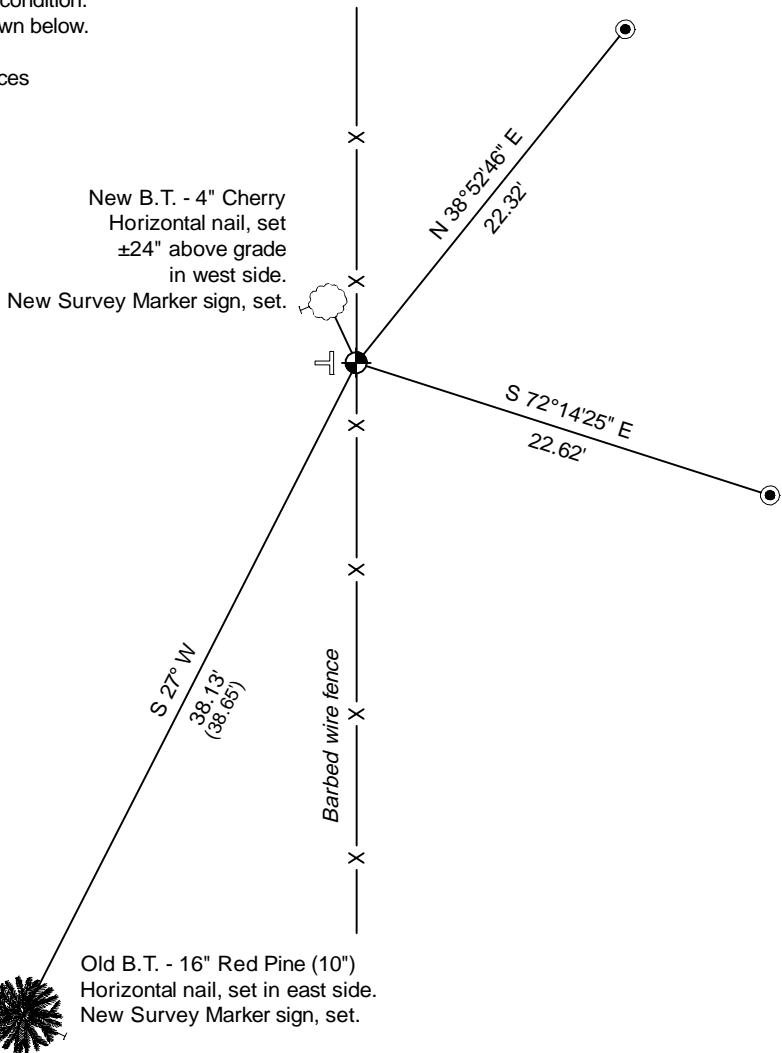
- June 11, 1997 - Surveyor 1170 - Stuart L. Foltz - indicates this position as "Oneida County alum. monument found" on county record Map #C1371.
- September 14, 2005 - Surveyor 1910 - Matthew E. Hoglund - indicates this position as "Oneida County aluminum monument found" on county record Map #B5968.
- August 15, 2009 - Surveyor 2671 - Timothy J. Rusch - indicates this position as "found alum. capped monument" on county record Map #B7251.

December 22, 2025 - I found a 2.4" diameter aluminum pipe monument with a 3.25" diameter aluminum cap stamped to identify the corner location. The monument is at the west edge of a field, in a north-south barbed wire fence line, and extends ±14" above grade. I also found 1 of Kelly's bearing trees alive and in good condition. I established 3 new reference monuments as shown below.

A-E 7.08(3)(c)(d) Plan view of corner with references to at least 4 witness monuments.



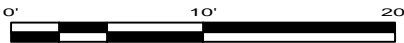
Bearings listed to the nearest second are referenced to the: Wisconsin Coordinate Reference System, Forest County Zone. All other bearings are magnetic.



LEGEND

Monument sizes = outside diameter measurements.

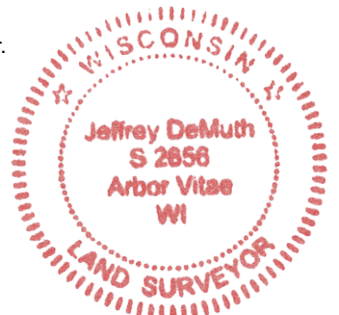
- ⊙ This Corner
- ⊥ Vinyl T-post, found ±1.5 feet NW of corner
- 1.25" diameter x 18" long iron pipe, set
- ⊥ Galvanized nail, set or nail found as shown



A-E 7.08(3)(e) 1859 Surveyor set a post, 1990 Surveyor set a 3" al. monument over the top of 1 1/2" i.p., subsequent surveyors found the same, as did I in 2025.

A-E 7.08(3)(f) I accept this monument in good faith as a FOUND PERPETUATED LOCATION of the corner.
A-E 7.08(3)(g)(h) This corner was not determined through lost-corner-proportionate methods.

A-E 7.08(3)(i) I, Jeffrey L. DeMuth, Professional Land Surveyor No. S-2656, hereby certify that the corner location on this record was determined by me or under my direction and control, and that this U.S. Public Land Survey Monument Record is correct and complete to the best of my knowledge, and belief.



Jeffrey L. DeMuth
December 23, 2025

SIGNATURE

DATE

43511150020