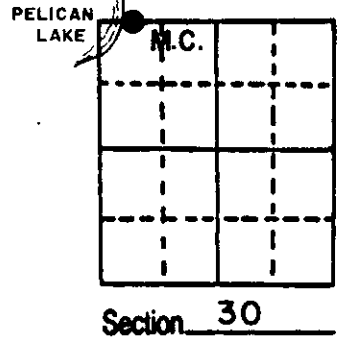


U.S. PUBLIC LAND SURVEY MONUMENT RECORD

Note: This form is intended and designed to fulfill all requirements of Wisconsin Administrative Code, Chapter A-E 5.02, U.S. Public Land Survey Monument Record (3) (a) (b) (c) (d) (e) (f) (g) (h) (i). An additional sheet may be added if necessary to conform with said requirements.

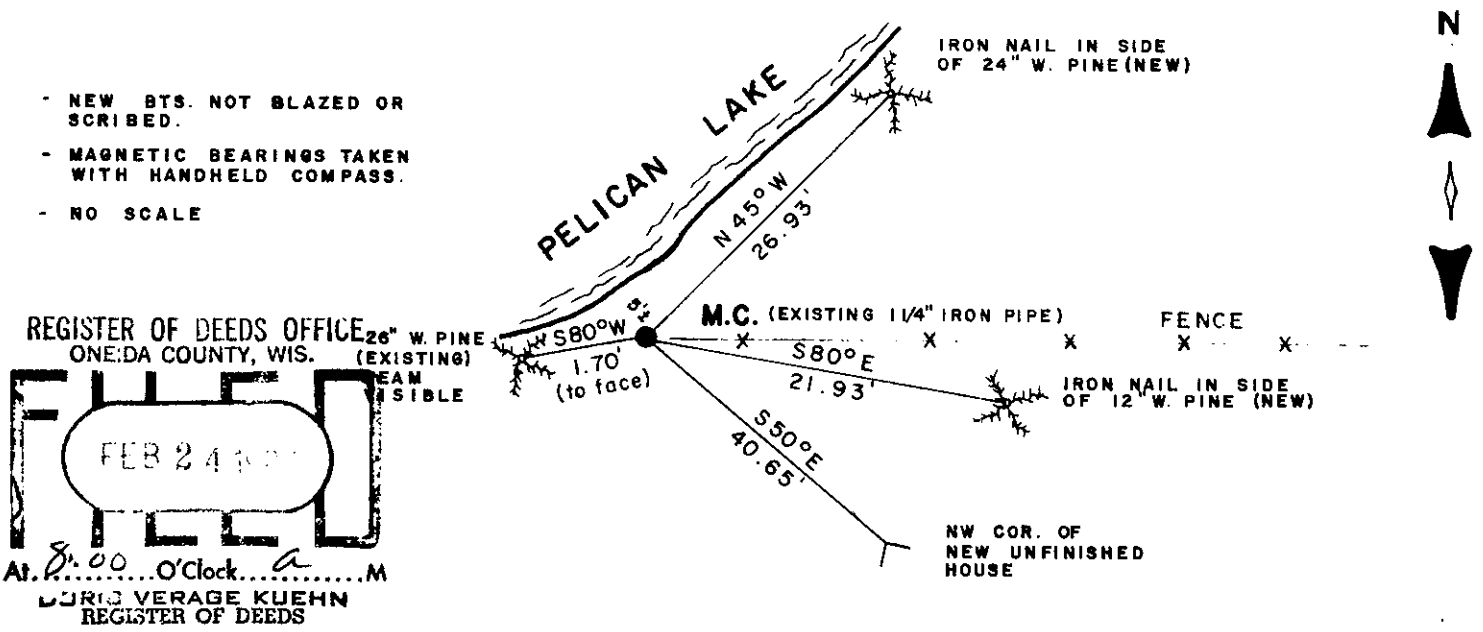
(a) Corner location: Township 35 North
 Range 11 East ~~West~~
 Town/City/Village SCHOEPKE
 County ONEIDA



(b) (f) (g) (h) Description of monument found at this corner and if it was accepted, state all evidence (material, testimonial, occupational, plats, records, other monuments) used as a basis for accepting. If not accepted or if nothing was found, state evidence used as basis for establishing location. If reestablished through lost corner proportionate methods, indicate all monuments, distances and directions used to establish.

- 1859 Wm. Daugherty set original corner west between 19 & 30 73.34 set meander post. BT's W. Pine 7" S21E 14, Birch 7" N74E 4.
- 1921 D.H. Vaughan did not find MC. Found old fence and ran east to section corner.
- 1985 I found iron pipe and old BT as shown below. Made new BT's as shown below.

(c) (d) (e) Plan view of corner with ties to at least 4 witness monuments. If in disagreement with previously established corner, show the distances between the two corners and also indicate the ties to the disputed corner.



- NEW BTS. NOT BLAZED OR SCRIBED.
- MAGNETIC BEARINGS TAKEN WITH HANDHELD COMPASS.
- NO SCALE

REGISTER OF DEEDS OFFICE
 ONEIDA COUNTY, WIS.
 FEB 24 1987
 At 8:00 O'clock A.M.
 JURIG VERAGE KUEHN
 REGISTER OF DEEDS

(i) I, WILLIAM E. BANDOW R.L.S. 1182
 (type or print name) certify that the corner location on this record was determined by me or under my direction and control and that this U.S. Public Land Survey Monument Record is correct and complete to the best of my knowledge and belief.
William E. Bandow
 Signature Date 12-22-86
 GENISOT & ASSOCIATES INC.
 1512 EAGLE ST., RHINE, WI.

REGISTER OF DEEDS OFFICE
 ONEIDA COUNTY, WIS.
 FEB 24 1987
 At O'clock M
 JURIG VERAGE KUEHN
 REGISTER OF DEEDS
 Index No. R-1-2

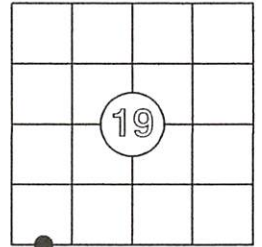
351190035

US PUBLIC LAND SURVEY MONUMENT RECORD

Per Wis. Admin. Code § A-E 7.08, a U.S. public land survey monument record shall be prepared and filed with the county survey records as part of any land survey within 60 days of setting or accepting the corner, which includes or requires the perpetuation, restoration, or use of a U.S. public land survey corner and when any of the situations in Wis. Admin. Code § A-E 7.08(1)(a), (b) or (c) arise.

3(a) Corner Identification:

Found Oneida Co. aluminum monument	Observed Coordinates:	Published County Coordinates:
Meander Corner, south line, east shore of Pelican Lake	N: 113837.89	N: 113837.90
Section 19	E: 326084.13	E: 326084.22
Township 35 North	Datum: WISCRS	Datum: NAD 1983 (91)
Range 11 East	GNSS Control: WISCRS NETWORK	
4th Principal Meridian	GNSS Method: RTK-Direct	
Town of Schoepke	Verification Method: 1, 2	
Oneida Co., WI		



CORNER ID:
3511190035

History of Original Corner Establishment

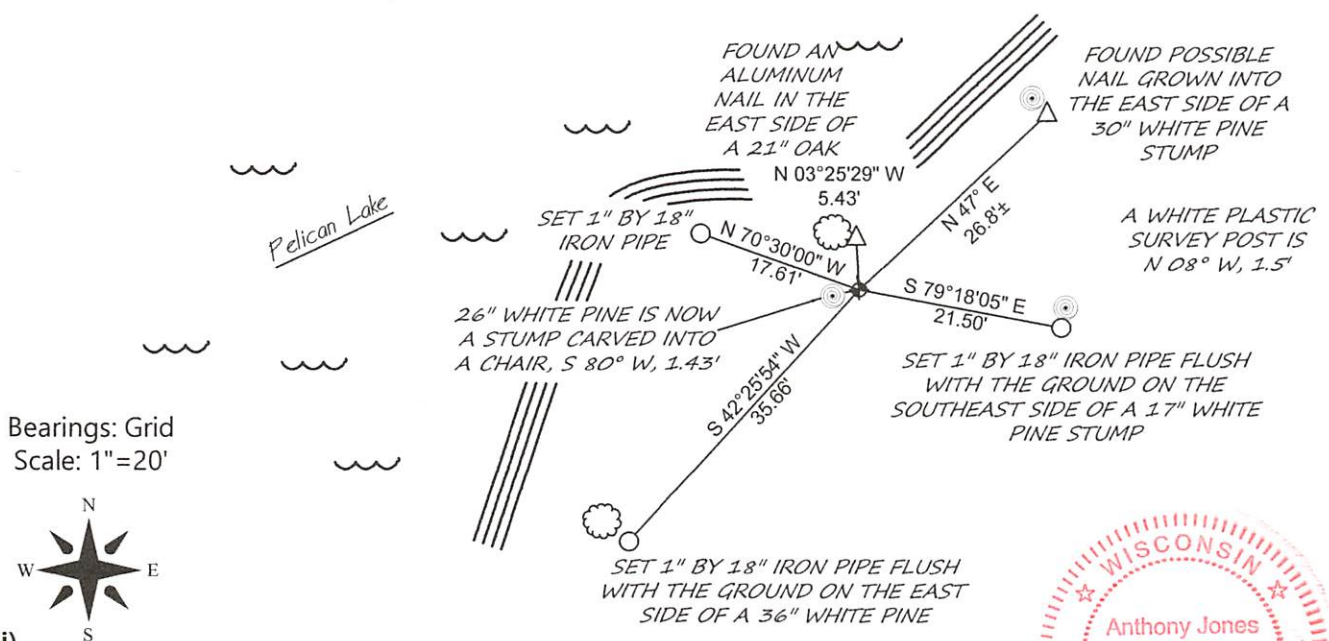
Corner Set: Wood Post
Original Surveyor: Wm. Daugherty
Date of Survey: June, 1859
White Pine, 7" S 21° E, 14 links
Birch, 7" N 74° E, 4 links

The coordinate value has been verified by at least one of the following methods:
1) comparison to a previously GNSS determined published value;
2) The value is the average of two or more GNSS observations at markedly different times;
3) one or more distances were measured to the corner from temporary GNSS observed offset locations.

3(b)(c)(d)(f)(g)(h)

This is a continuation of a previous USPLSS Monument Record by Surveyor William Kelly (1990). See previous record for additional history on this corner.

- December 21, 1990 - William Kelly, S-1098, finds a 1 1/4" iron Pipe and replaces it with a 3" aluminum monument (Map No. C778)
- December 17, 1998 - Jim Rein, S-1234, finds a capped 2" aluminum monument (Map No. B4076)
- January 30, 2004 - William Badow, S1182, finds an Oneida County aluminum monument (Map No. C2051)
- July 26, 2005 - Dean Williams, S-2468, finds a 3" aluminum monument (Map No. A1535)
- June 15, 2007 - Timothy Rusch, S-2671, finds an aluminum monument (C.S.M. No. 3431)
- March 8, 2011 - Timothy Rusch, S-2671, finds an aluminum monument (Map No. A2595)
- September 9, 2011 - Kevin Boyer, S-2675, finds an 2.4" iron pipe w/ aluminum cap (TPP 1600-13-00-4.02)
- November 12, 2018 - James Anderson, S-3127, finds an Oneida County aluminum monument (C.S.M. No. 4789)
- January 24, 2024 - Todd Loftus, S-1523 finds a capped 2.5" aluminum monument (Map No. A4149)
- October 12, 2024 - I found the aluminum monument as accepted by other surveyors. I set new witness corners, as shown below.



Bearings: Grid
Scale: 1"=20'



3(i)

I, Anthony R. Jones, Wisconsin Professional Land Surveyor No S-2508, hereby certify that the corner location shown on this record was determined by me, or under my direction or control, and that this U.S. Public Land Survey Monument Record is correct and complete to the best of my knowledge and belief.

Anthony R. Jones, PLS No. S-2508

10/12/24

Date



Index No. _____