

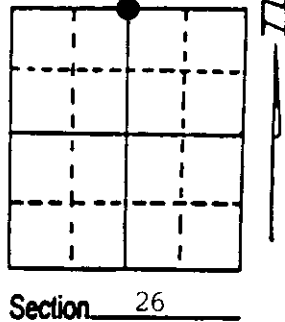
U.S. PUBLIC LAND SURVEY MONUMENT RECORD

Note: This form is intended and designed to fulfill all requirements of Wisconsin Administrative Code, Chapter A-E 7.08 U.S. Public Land Survey Monument Record (3) (a) (b) (c) (d) (e) (f) (g) (h) (i). An additional sheet may be added if necessary to conform with said requirements.

(a) Corner location: Township 35 North
 Range 11 East/West

Town/City/Village Schoepke

County Oneida



(b) (f) (g) (h) Description of monument found at this corner and if it was accepted, state all evidence (material, testimonial, occupational, plats, records, other monuments) used as a basis for accepting. If not accepted or if nothing was found, state evidence used as basis for establishing location. If reestablished through lost corner proportionate methods, indicate all monuments, distances and directions used to establish. Indicate type of monument found or set and sign post.

William Kelly, R.L.S. (license terminated) in 1990 set a 2-1/4" Aluminum Oneida County Monument to replace a 1" iron pipe at the south end of a north-south line fence of Section 23.

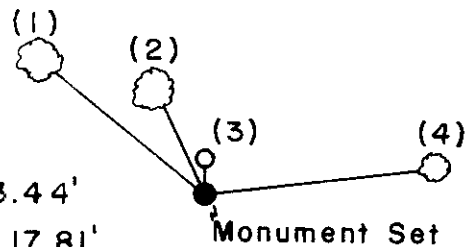
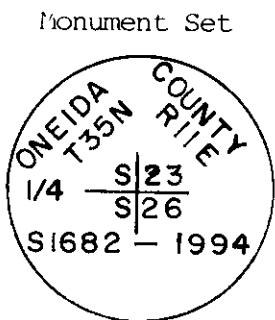
Raymond Lass a long time resident and land owner told Kelly he set the pipe and it was not the corner, that the corner should be south of 1" iron pipe. The old fence was correct but not the corner.

D.H. Vaughn, County Surveyor subdivided Section 26 in 1914. Searched and found Vaughns' old C-1/4 position. The remains of his old post along with H.C. Laurence's cedar post which he placed in the 1950's.

Vaughn had a distance of 41.22 chains (2720.52') from C-1/4 to N-1/4, Section 26.

(See Back)

(c) (d) (e) Plan view of corner with ties to at least 4 witness monuments. If in disagreement with previously established corner, show the distances between the two corners and also indicate the ties to the disputed corner.



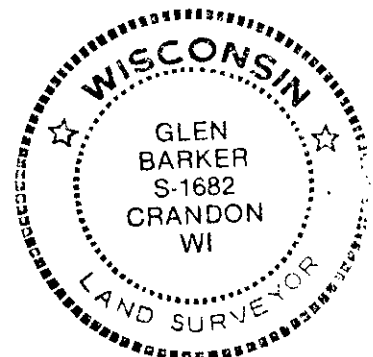
- (1) 22" Red Oak N52°W, 33.44'
 - (2) 18" Sugar Maple N27°W, 17.81'
 - (3) Kelly's Mon. N2°58'27"E, 7.88'
 - (4) 20" Red Oak N82°, 36.98'
- Sign post by monument

2-1/4" Aluminum w/2-1/4" alloy cap, Oneida County
 4" above ground

(i) I, Glen Barker
 (type or print name) certify that the corner location on this record was determined by me or under my direction and control and that this U.S. Public Land Survey Monument Record is correct and complete to the best of my knowledge and belief.

Glen Barker
 Signature

3/2/95
 Date



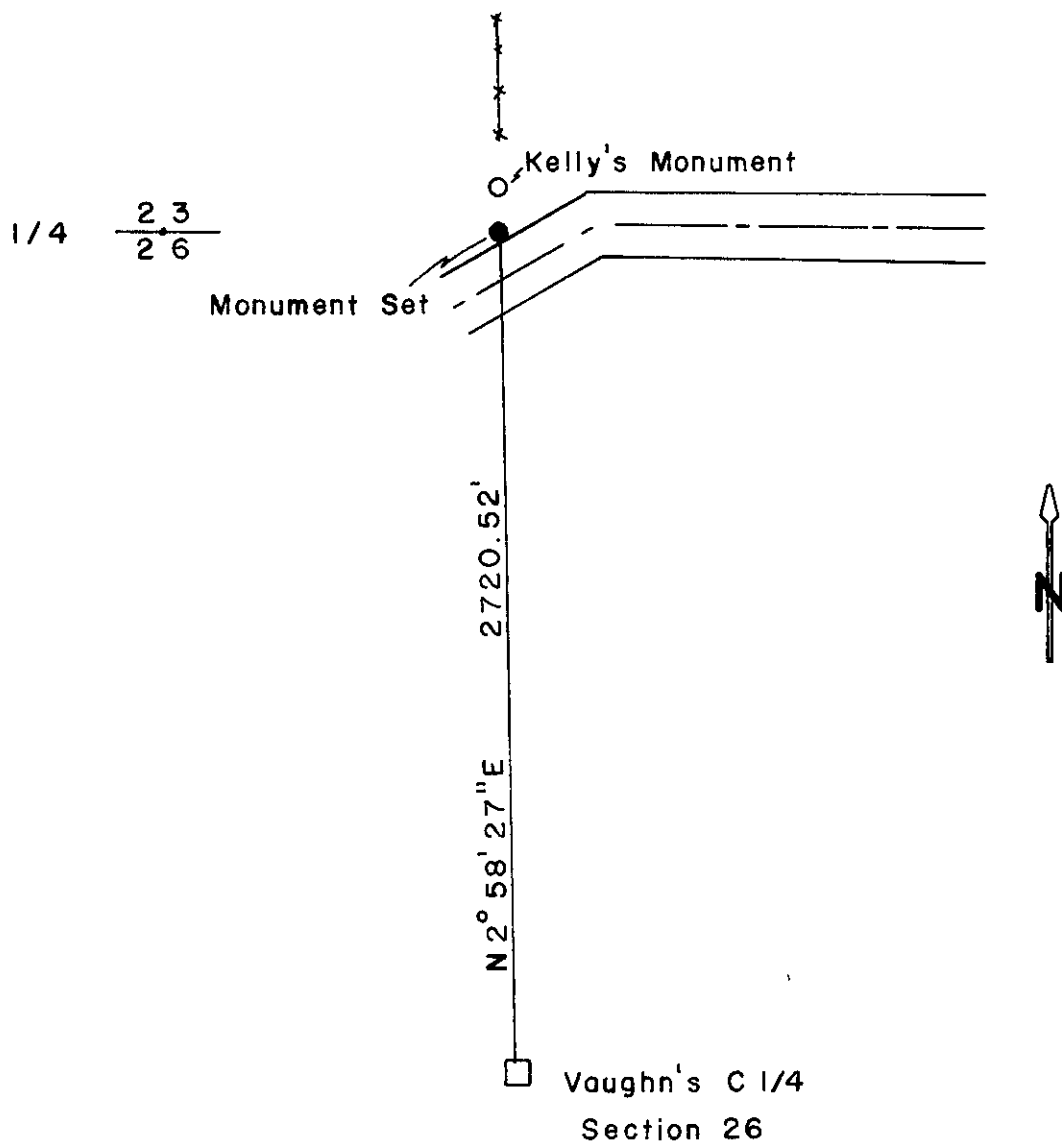
Index No. R-19.

Stamp
 3511230020

Retracement from C-1/4 to Kelly's monument and end of old fence a distance of 2728.40'.

Set a new monument S02 55'27"W, 7.88' of Kelly's monument. A total distance of 2720.52' the recorded distance of D.H. Vaughn's.

This position fits center line of town road running east.



REGISTER OF DEEDS OFFICE
ONEIDA COUNTY, WIS
FILED
MAY 5 1995
At _____ O'Clock _____ M
THOMAS H. LEIGHTON
REGISTER OF DEEDS

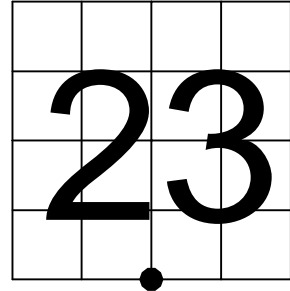
Oneida County
Land Information Office
Filed
1/12/2026

U.S. PUBLIC LAND SURVEY MONUMENT RECORD

NOTE: This form is intended and designed to fulfill all requirements of Wisconsin Administrative Code, Chapter A-E 7.08 U.S. Public Land Survey Monument Record (3) (a-i)

A-E 7.08(3)(a) Identity of corner:
South 1/4 Corner Section 23,
Township 35 North, Range 11 East
of the Fourth Principal Meridian,
Town of Schoepke, Oneida County, Wisconsin

WISCORS - ONEIDA COUNTY
N: 113,146.913 USft (XXX,XXX.XXX)
E: 349,878.274 USft (XXX,XXX.XXX)
Datum: NAD83 (2011)
GNSS Method RTN
GNSS Control WISCORS VRS



The coordinate value shown has been verified by the average of two or more GPS observations at a markedly different time. Coordinates shown in parenthesis are previously published values.

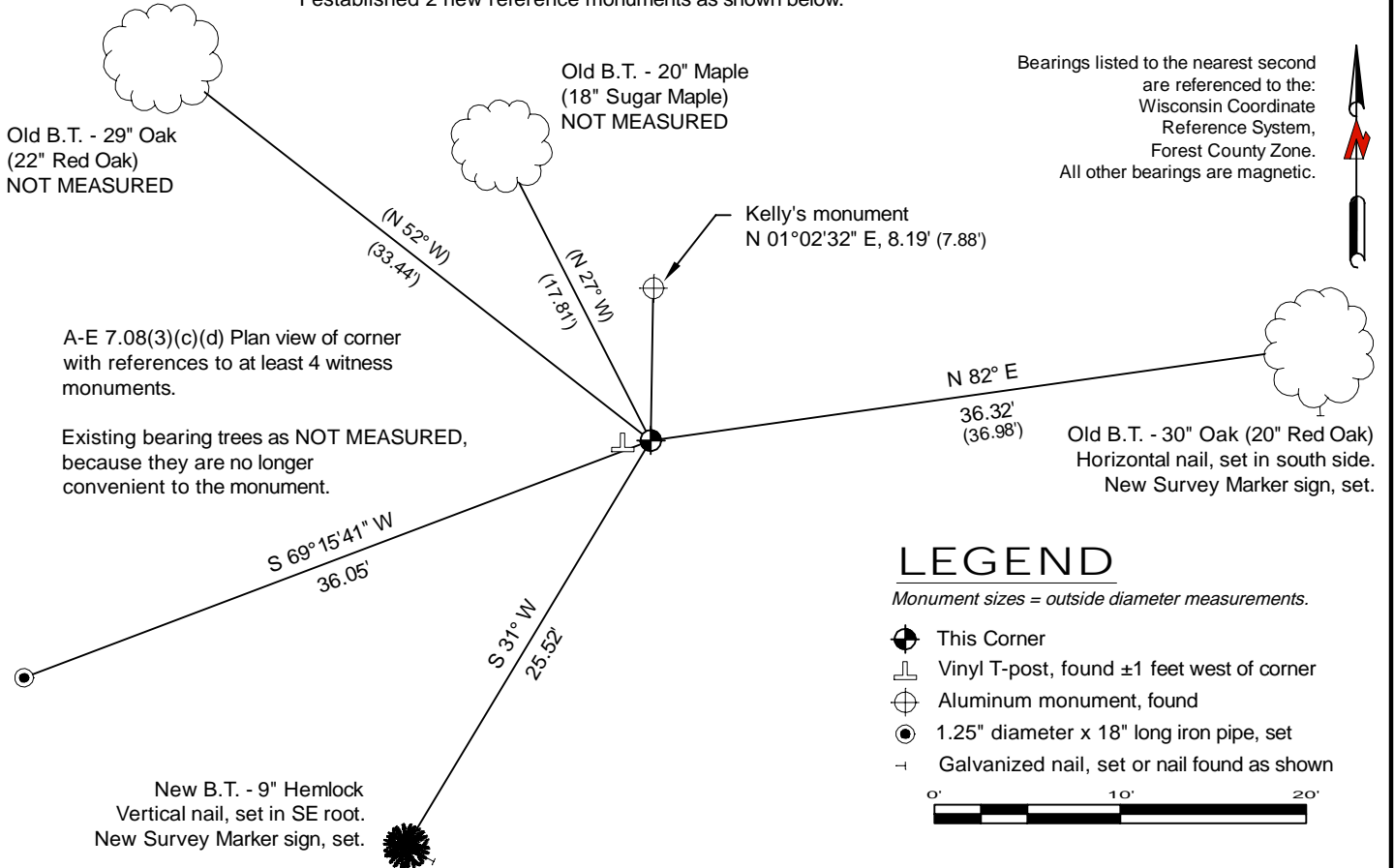
A-E 7.08(3)(b)

Original Surveyor: William E. Daugherty - July 25, 1859 to July 29, 1859
Red Oak 10 - S 30° E, 25 Links, Linden 7 - N 50° W, 35 Links

See previous U.S. Public Land Survey Monument Record - R-19 - March 2, 1995 - Surveyor 1682 - Glen Barker - THENCE:

- December 31, 1998 - Surveyor 2148 - Russel F. Brown - indicates this position as "found Oneida County monument" on county record Map #B4108.
- August 6, 2000 - Surveyor 1390 - David E. Tlusty - indicates this position as "2" dia. aluminum monument found" on county record Map #L1742.
- May 16, 2003 - Surveyor 2148 - Russel F. Brown - indicates this position as "found Oneida County monument" on county record Map #B5266.
- November 18, 2003 - Surveyor 1731 - Kip W. Soder - indicates this position as "Oneida Co. iron pipe - brass cap monument" on county record Map #B5546.
- May 2, 2005 - Surveyor 2343 - Kevin P. Bixby - indicates this position as "existing O C M" on county record Map #B5851.
- March 25, 2015 - Surveyor 1731 - Kip W. Soder - indicates this position as "Oneida Co. iron pipe brass cap monument found" on county record Map #A3032.

December 22, 2025 - I found a 2.4" diameter aluminum pipe monument with a 3.25" diameter aluminum cap stamped to identify the corner location. The monument on a south facing slope, on the north side of a road cut. The monument extends ±10" above grade. I also found 3 of Barker's bearing trees alive and in good condition, as well as Kelly's erroneous aluminum monument.
I established 2 new reference monuments as shown below.

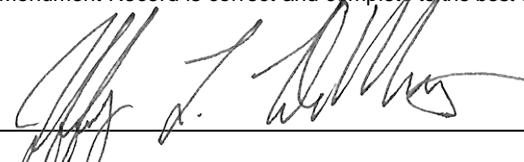


A-E 7.08(3)(e) 1859 Surveyor set a post, 1995 Surveyor set a 2-1/4" aluminum w/2-1/4" alloy cap, subsequent surveyors found similar. I found the same in 2025.

A-E 7.08(3)(f) I accept this monument in good faith as a FOUND PERPETUATED LOCATION of the corner.
A-E 7.08(3)(g)(h) This corner was not determined through lost-corner-proportionate methods.

A-E 7.08(3)(i) I, Jeffrey L. DeMuth, Professional Land Surveyor No. S-2656, hereby certify that the corner location on this record was determined by me or under my direction and control, and that this U.S. Public Land Survey Monument Record is correct and complete to the best of my knowledge, and belief.




SIGNATURE _____ DATE December 23, 2025