

CERTIFIED LAND CORNER RESTORATION

State of Wisconsin }
County of Oneida } ss.

I John H. Fisher, do hereby certify that on the 18th day of May, 1981, I found evidence of the meander corner corner of Sections 3 and 4 Township 36N Range 5E, Fourth Principal Meridian, as described hereon; and that from this evidence I established a new monument and accessories as described hereon to perpetuate the original location of this corner:

Description of original monument and accessories and subsequent restorations:

The original Gov't. survey was performed by Joseph H. Jenkins, Deputy Surveyor in June 1, 1863.

Set wood post

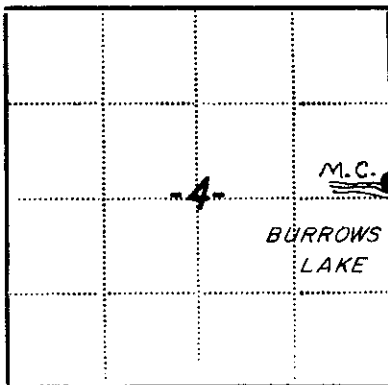
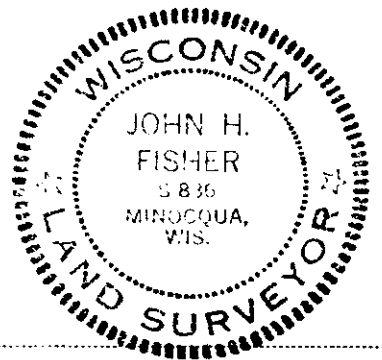
8" Tamarack S63°E, 6 links
8" Tamarack S67°W, 13 links

Description of corner evidence found:

4' iron pipe
Squared post
16" White Pine, N80°W, 9.5 feet

Description of monument and accessories I established to perpetuate the location of this corner:

Corner is in metes and bounds subdivision and in good shape and no need of perpetuation.



Legend: Circle - Corner monument restored, Square -

Resident witnesses

Dated at Minocqua Wisconsin, this 31 day of July 1981.

Signature John H. Fisher Title Registered Land Surveyor (County Surveyor, Registered Land Surveyor, or other duly authorized official)

Surveyors Registration No. S-836

Office of REGISTER OF DEEDS County of Oneida

I hereby certify that the within instrument was filed in this office for record on the 17th day of September 1982, and was filed in Book No. Page No. of County Records.

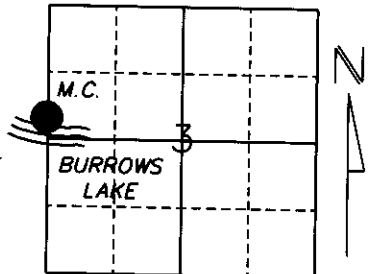
Signature Doris Terage Kuehn Title REGISTER OF DEEDS

Township, Range, Section, Index No., Page No.

U.S. PUBLIC LAND SURVEY MONUMENT RECORD

Note: This form is intended and designed to fulfill all requirements of Wisconsin Administrative Code, Chapter A-E 5.02, U.S. Public Land Survey Monument Record (3) (a) (b) (c) (d) (e) (f) (g) (h) (i). An additional sheet may be added if necessary to conform with said requirements.

(a) Corner location: Township 36 North
Range 5 East
Town/City/Village Little Rice
County Oneida



Section 3

(b) (f) (g) (h) Description of monument found at this corner and if it was accepted, state all evidence (material, testimonial, occupational, plats, records, other monuments) used as a basis for accepting. If not accepted or if nothing was found, state evidence used as a basis for establishing location. If reestablished through lost corner proportionate methods, indicate all monuments, distances and directions used to establish.

History of original corner establishment:

Original Gov't Survey was performed by Joseph H. Jenkins, Deputy Surveyor on June 1, 1863. Original corner was a wood post with bearing trees:

- 8" Tamarack S63E, 6 links
- 8" Tamarack S67W, 13 links

Revisited by unknown person and time where a 4" Iron Pipe and squared post was set with bearing tree.

16" White Pipe N80W, 9.5 feet

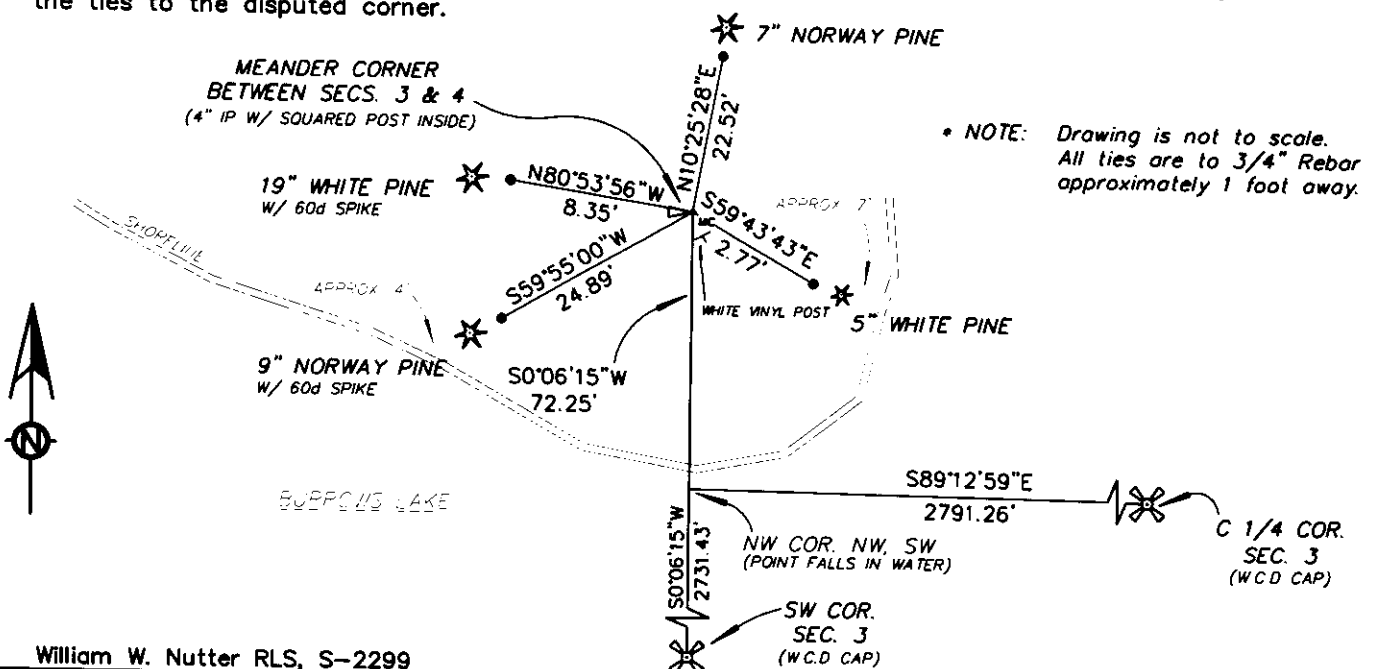
Revisited again May 18, 1981 by John H. Fisher.

Where he stated "Corner is in metes and bounds subdivision and in good shape and no need of perpetuation."

Description of corner evidence found:

We located a 4" Iron Pipe with a squared post inside. We accepted this position and tied to 3/4" Iron Rebar.

(c) (d) (e) Plan view of corner with ties to at least 4 witness monuments. If in disagreement with previously established corner, show the distances between the two corners and also indicate the ties to the disputed corner.



(i) I, William W. Nutter RLS, S-2299
(type or print name) certify that the corner location on this record was determined by me or under my direction and control and that this U.S. Public Land Survey Monument Record is correct and complete to the best of my knowledge and belief.

William W. Nutter, S-2299
Signature

2-17-2003
Date

Date

Index No. B-C-13

U.S. PUBLIC LAND SURVEY MONUMENT RECORD

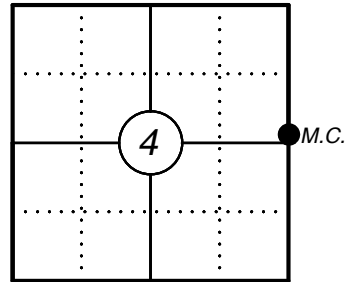
This form is intended and designed to fulfill all requirements of Wisconsin Administrative Code, Chapter A-E 7.08 U.S. Public Land Survey Monument Record (3) (a)(b)(c)(d)(e)(f)(g)(h)(i). An additional sheet may be added if necessary to confirm with said requirements.

Oneida County
Land Information Office
Filed
2/25/2025

(a) Corner Location:

Meander Corner Section 4
Township 36 North
Range 5 East
Town of Little Rice
County of Oneida

Corner ID: 3605042100



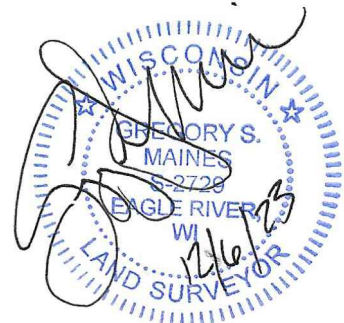
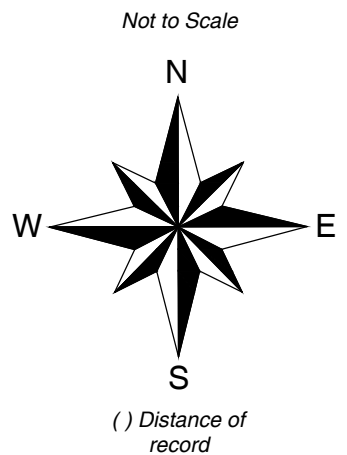
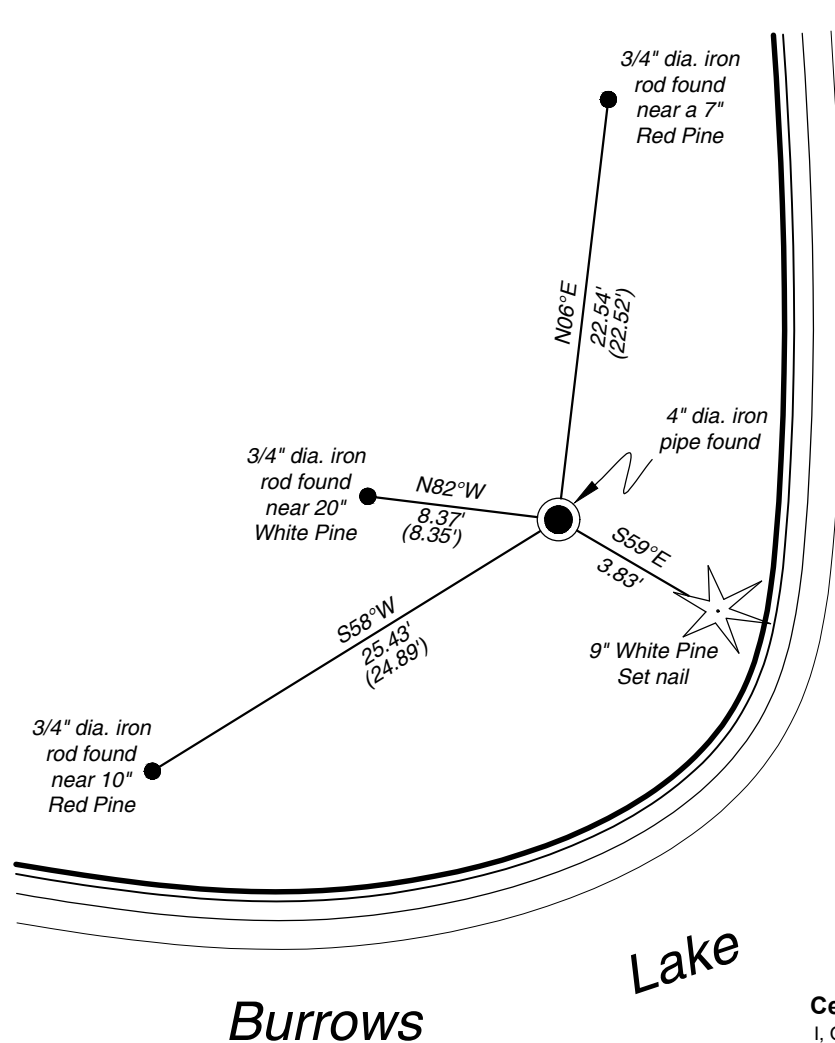
(b) History of Original Corner:

For corner history, see previous U.S. Public Land Survey Monument Record by William W. Nutter, dated February 17, 2003..

(f)(g)(h) Description of monument found at this corner and if it was accepted, state all evidence (material, testimonial, occupational, plats, records, other monuments) used as a basis for establishing location. If reestablishing through lost corner proportionate methods, indicate all monuments, distances, and directions used to establish. Indicate type of monument and sign post found or set.

11/13/2023 I found and accepted a 4" dia. iron pipe at the corner location and three existing iron rod references. I made one bearing tree to further witness the corner as shown below.

(c)(d)(e) Plan view of corner with ties to at least four witnesses. If in disagreement with previously established corner, show the distances between the two corners and also indicate the tie to the disputed corner.



Certification

I, Gregory S. Maines, Professional Land Surveyor No. 2729, hereby certify that the corner location on this record was referenced by me or under my direction and control and that this U.S. Public Land Survey Monument Record is complete to the best of my knowledge and belief. REF: 2023331

Index No.: