

At _____ O'Clock _____ M
THOMAS H. LEIGHTON
REGISTER OF DEEDS
Recorders Data

This form is intended to fulfill the requirements of Chapter A-E7.08 (3)(a) thru (i) U.S. Public Land Survey Monument Location Record, Wisconsin Administrative Code. Use the reverse side of form for continuation.

U.S. PUBLIC LAND SURVEY MONUMENT LOCATION RECORD

USPLS CORNER: NW SECTION: 25 TOWNSHIP: 36 NORTH RANGE: 05 EAST

NAME OF WATERWAY FOR M.C. CORNER : N/A SECTION LINE: N/A

(CITY)(VILLAGE)(TOWN) OF: LITTLE RICE COUNTY OF: ONEIDA

Description of monument found or placed and all other evidence used as the basis for monument location; including monuments and measurements required if the corner location was reestablished by lost corner proportionate methods. Also indicate name of the original surveyor, original survey date and the corner monument, bearing trees, witness or other reference monuments established, including measured bearing and distance ties, from available survey records.

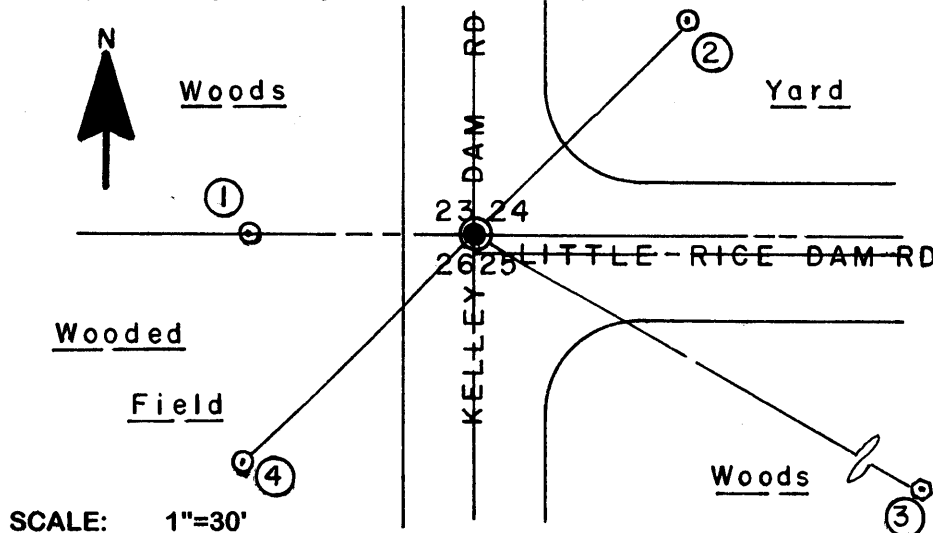
THIS CORNER REREFERENCED AS ONLY TWO(2) RECORD WITNESSES SATISFACTORY FOR PERPETUATION USAGE.

In June 1863, Joseph H. Jenkins/GLO set a wood post as the original corner and noted OBTs: a 14" Pr N08°W 75 links and a 12" Pr S78°W 52 links; all are now obliterated.

On a U.S. Public Land Survey Monument Record dated December 20, 1989 and filed in Oneida County records, Glen Barker/RLS 1682 found and accepted a 2.5" dia. iron pipe per previous surveys 4" below road surface at this section corner and noted following as new witnesses: Power Pole No. 3605-23 N48°W 29.32', found OK; a 4" Pw S66°E 101" +/-, now a 4" high rotted stump; a 10" Pj S28°E 88.6' +/-, now broken off and fallen to the NE with lower blaze open on rotted stump face; and a standard aluminum monument with stamped Oneida County cap 35.0' West, found OK and used for new tie shown below; the new rebar witness monuments were set with transit on a right line thru pin center at the corner.

On June 16, 2006, I found an older PK nail with washer flush in blacktop pavement at this corner per remaining record ties. I pulled the old 3/16" dia. x 1" long PK nail with washer and reset with a 1/2" dia. x 4.5" long tapered stainless steel cotton gin pin with geared top flush with blacktop pavement for new ties shown below. Prior to driving the pin, I detected a very strong magnetic locator reading below the pavement at corner position; undoubtedly indicating the older iron pipe found previously by Barker. There were no direct witnesses.

Plan view map of monument location with bearing and distance ties to a minimum of four(4) described witness or reference monuments of concrete, natural stone, iron, live bearing trees or equivalent material. If applicable, also show a minimum of two(2) bearing and distance ties to any other monument found and not accepted; including the bearing and distance from the accepted monument.



- WITNESS MONUMENT TIES:**
- ① Standard aluminum monument with stamped Oneida County cap West 35.00'.
 - ② Set a 5/8" dia. x 24" long rebar with yellow poly Reference Mark cap flush N45°E 47.75'.
 - ③ New 12" Pw BT S60°E 101.18'.
 - ④ Set a 5/8" dia. x 24" long rebar with yellow poly Reference Mark cap 1" up S45°W 50.35'.
- Found a standard white poly 'T' marker post 13" West of Witness Monument #1.

SCALE: 1"=30'

Unless otherwise indicated, all bearing tree ties are to a .25" dia. by 2.5" long PK nail with a 1.25" dia. steel washer driven into unblazed right face and a .25" dia. by 2.5" long PK nail with a 2" dia. steel washer stamped BT is also driven into unblazed face of bearing tree at DBH; the basis for measured bearings is by compass to nearest degree and all tie distances are measured horizontal by steel tape corrected to nearest 1/100th feet at standard temperature of 68° F.

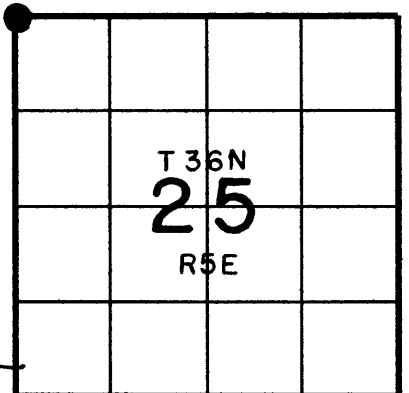
RLS SEAL:



LAND SURVEYOR CERTIFICATE:

I, William C. Rohde, hereby certify that I am duly licensed as a Professional Land Surveyor in the State of Wisconsin; that this USPLS monument location was determined by me and/or under my direct supervision and control; and that this U.S. Public Land Survey Monument Location Record is true and correct to the best of my knowledge and belief.

Signed: *William C. Rohde*
William C. Rohde RLS 841



SECTION LOCATION MAP
INDEX NO. R 21
3605230000

U.S. PUBLIC LAND SURVEY MONUMENT RECORD ADDENDUM

Note: This form is intended and designed to fulfill all requirements of the Wisconsin Administrative Code, Chapter A-E 7.08 U.S. Public Land Monument Record (3)(a)(b)(c)(d)(e)(f)(g)(h)(i). An additional sheet may be added if necessary to conform with said requirements.

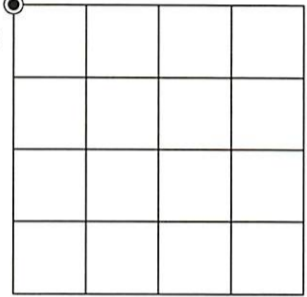
(a) CORNER LOCATION:

Northwest Corner of Section 25
Township 36 North
Range 5 East
Town of Little Rice
County of Oneida

North:
East:
Datum:
GNSS Method:
GNSS Control:

(RECORDING AREA)

SECTION 25



(b) HISTORY OF ORIGINAL CORNER ESTABLISHMENT

Original Surveyor:
Date of Survey: Commenced
Completed
Original B.T.'S

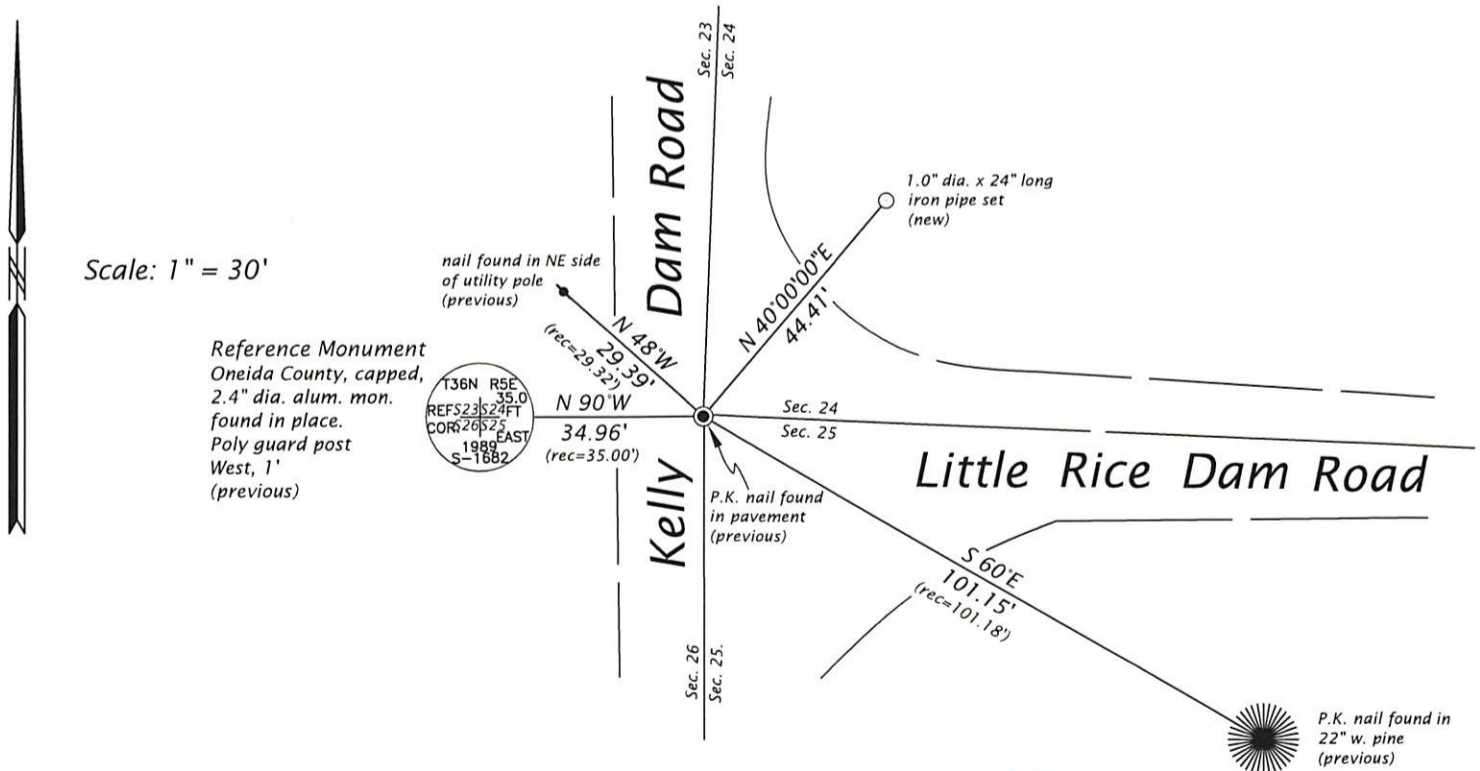
SEE PREVIOUS U.S.P.L.S. MONUMENT RECORD DATED DECEMBER 20, 2006

(f)(g)(h) DESCRIPTION OF MONUMENT FOUND AT THIS CORNER AND IF IT WAS ACCEPTED, STATE ALL EVIDENCE (MATERIAL, TESTIMONIAL, OCCUPATIONAL, PLATS, RECORD, OTHER MONUMENTS) USED AS A BASIS FOR ESTABLISHING LOCATION. IF NOT ACCEPTED OR IF NOTHING WAS FOUND, STATE EVIDENCE USED AS BASIS FOR ESTABLISHING LOCATION. IF REESTABLISHED THROUGH LOST CORNER PROPORTIONATE METHODS, INDICATE ALL MONUMENTS, DISTANCES AND DIRECTIONS USED TO ESTABLISH. INDICATE TYPE OF MONUMENT AND SIGN POST FOUND OR SET.

This is a perpetuation of a previous U.S.P.L.S. Monument Record by William C. Rohde, RLS-0841, dated December 20, 2006, and filed in the office of the Oneida County Register of Deeds. A complete history of the corner can be found on the previous monument record. I accept the previous location as a true and faithful perpetuation or reestablishment of the original corner location and further perpetuate it as follows.

January 13, 2025, James D. Rein, PLS No. S-1234, Rohde's geared top cotton gin pin is now gone. We found and I accepted a P.K. nail in the pavement in the centerline of Kelly Dam Road. We further perpetuate it as shown in the plan. The two 5/8" dia. x 24" long iron rods are now gone. See below for 1 additional tie and updated ties to the recovered references.

(c)(d)(e) PLAN VIEW OF CORNER WITH TIES TO AT LEAST 4 WITNESS MONUMENTS. IF IN DISAGREEMENT WITH PREVIOUSLY ESTABLISHED CORNER, SHOW THE DISTANCE BETWEEN THE TWO CORNERS AND ALSO INDICATE THE TIES TO THE DISPUTED CORNER.



(i) I, JAMES D. REIN, PROFESSIONAL LAND SURVEYOR NO. S-1234 HEREBY CERTIFY THAT THE CORNER LOCATION ON THIS RECORD WAS DETERMINED BY ME OR UNDER MY DIRECTION AND CONTROL AND THAT THIS U.S. PUBLIC LAND SURVEY MONUMENT RECORD IS CORRECT AND COMPLETE TO THE BEST OF MY KNOWLEDGE AND BELIEF.



James D. Rein
SIGNATURE

1/14/25
DATE

INDEX NO. R - 21
3605230000