

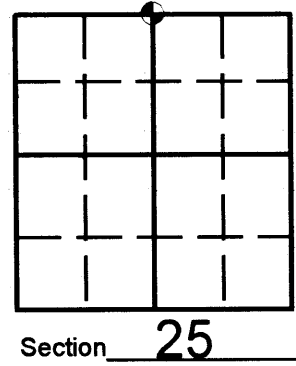
# U.S. PUBLIC LAND SURVEY MONUMENT RECORD

Note: This form is intended and designed to fulfill all requirements of Wisconsin Administrative Code, Chapter A-E 7.08 U.S. Public Land Survey Monument Record (3)(a)(b)(c)(d)(e)(f)(g)(h)(i). An additional sheet may be added if necessary to conform with said requirements.

(a) Corner location: Township 36 North  
 Range 05 East/West

Town/City/Village LITTLE RICE  
 County ONEIDA

REGISTER OF DEEDS OFFICE  
 ONEIDA COUNTY, WIS.  
**FILED**  
 JAN 16 2009  
 At \_\_\_\_\_ O'Clock \_\_\_\_\_ M  
**THOMAS H. LEIGHTON**  
 REGISTER OF DEEDS



b) (f) (g) (h) Description of monument found at this corner and if it was accepted, state all evidence (material, testimonial, occupational, plats, records, other monuments) used as a basis for accepting. If not accepted or if nothing was found, state evidence used as basis for establishing location. If reestablished through lost corner proportionate methods, indicate all monuments, distances and directions used to establish. Indicate type of monument found or set and sign post.

### POST-CONSTRUCTION

See U.S. Public Land Survey Monument Record Form R-23 for history of corner

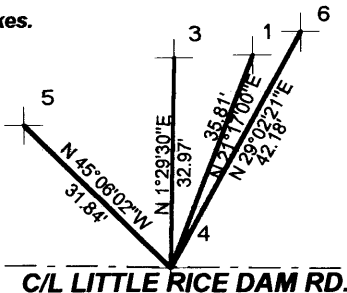
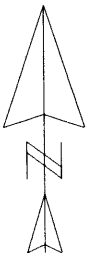
-JULY- 2008 Kevin Bixby found mag. pull and witnessed as shown below

-DECEMBER 2008- Kevin Bixby set masonry nail and witnessed as shown below.

(c) (d) (e) Plan view of corner with ties to at least 4 witness monuments. If in disagreement with previously established corner, show the distances between the two corners and also indicate the ties to the disputed corner.

Angles and distances measured with total station. Said distances and angles measured to heads of spikes.

SCALE: 1" = 30'

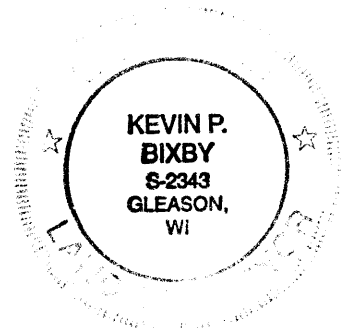


#### LEGEND

- 1- EXISTING 3/4" X 24" IRON PIPE
- 3- EXISTING ONEIDA COUNTY WITNESS MONUMENT
- 4- SET MASONARY NAIL
- 5- EXISTING 60D SPIKE IN EXISTING 13" REDPINE B.T.
- 6- EXISTING 60D SPIKE IN EXISTING 16" JACK PINE B.T.

(i) I, KEVIN P. BIXBY

(type or print name) certify that the corner location on this record was determined by me or under my direction and control and that this U.S. Public Land Survey Monument Record is correct and complete to the best of my knowledge and belief.



Kevin P. Bixby  
 Signature

12/08/08  
 Date 3605 230020

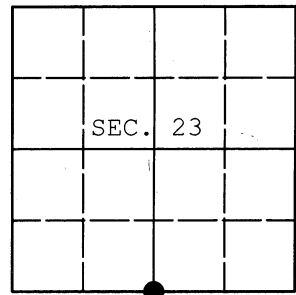
Stamp

Index No. R-23

**U.S. PUBLIC LAND SURVEY MONUMENT RECORD**

Note: This form is intended and designed to fulfill all requirements of Wisconsin Administrative Code, Chapter A-E 7.08 U.S. Public Land Survey Monument Record (3) (a) (b) (c) (d) (e) (f) (g) (h) (i). An additional sheet may be added if necessary to conform with said requirements.

(a) CORNER LOCATION: WISCORS - Oneida County  
 1/4 Cor. of Secs. 23 & 26 N: 145,422.63 USft  
 Township 36 North E: 157,604.14 USft  
 Range 5 East of the 4th P.M. Datum: NAD 1983(2011)  
 Town of Little Rice County of Oneida



(b) HISTORY OF ORIGINAL CORNER ESTABLISHMENT

Original Surveyor: Joseph Jenkins Original Accessories:  
 Date of Survey: Commenced: June 1, 1863 Tamarack ? N88°W, 4 lks.  
 Completed: June 10, 1863 Tamarack 8" S34°E, 3 lks.

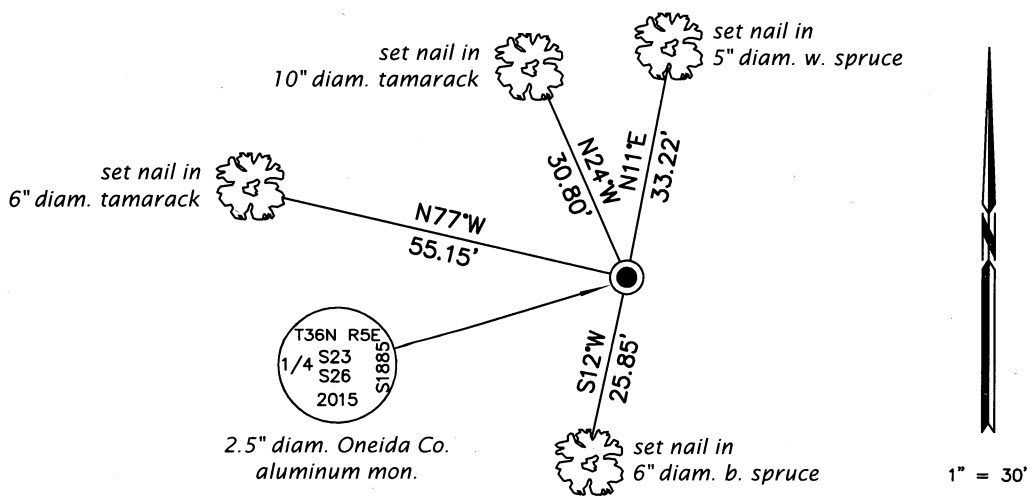
(b) (f) (g) (h) Description of monument found at this corner and if it was accepted, state all evidence (material, testimonial, occupational, plats, records, other monuments) used as a basis for accepting. If not accepted or if nothing was found, state evidence used as basis for establishing location. If re-established through lost corner proportionate methods, indicate all monuments, distances and directions used to establish. Indicate type of monument and sign post found or set.

November 19, 1934: CCC Book 3 on Page 152 (Hall). Set 3-1/2' iron bar and cedar post: Spruce 4" S21°W, .473; Jack 2" N87-1/2°W, 1.15

April 23, 2015: I found and accepted a 48" long axle shaft and 2" diam. thinwall pipe. In its place, I set a 2.5" diam., 30" long aluminum pipe with a 3.25" diam. Oneida Co. aluminum cap projecting 3" above the surface. I found the decayed remains of Hall's spruce at record bearing and distance. I established accessories as shown below and set a white plastic sign post bearing East, 1.0 ft. dist.

The coordinates shown were derived from a direct RTN GPS observation referenced to the WISCORS network.

(c) (d) (e) Plan view of corner with ties to at least 4 witness monuments. If in disagreement with previously established corner, show the distances between the two corners and also indicate the ties to the disputed.



REGISTER OF DEEDS OFFICE  
 ONEIDA COUNTY  
 FILED

AUG 13 2015

AT \_\_\_\_\_ O'CLOCK \_\_\_\_\_ M  
 KYLE J. FRANSON  
 REGISTER OF DEEDS

(i) I, Jeffrey W. Austin, Professional Land Surveyor No. S-1885, hereby certify that the corner location on this record was determined by me or under my direction and control and that this U.S. Public Land Survey Monument Record is correct and complete to the best of my knowledge and belief.

Signature

JULY 24, 2015

Date

3605230020 (INDEX NO. R-19)