

At \_\_\_\_\_ O'Clock \_\_\_\_\_ M  
THOMAS H. LEIGHTON  
REGISTER OF DEEDS  
Recorders Data

This form is intended to fulfill the requirements of Chapter A-E7.08 (3)(a) thru (i) U.S. Public Land Survey Monument Location Record, Wisconsin Administrative Code. Use the reverse side of form for continuation.

**U.S. PUBLIC LAND SURVEY MONUMENT LOCATION RECORD**

USPLS CORNER: SOUTH WITNESS MC SECTION: 24 TOWNSHIP: 36 NORTH RANGE: 5 EAST

NAME OF WATERWAY FOR M.C. CORNER : KILLARNEY LAKE SECTION LINE: WEST

(CITY)(VILLAGE)(TOWN) OF: LITTLE RICE COUNTY OF: ONEIDA

Description of monument found or placed and all other evidence used as the basis for monument location; including monuments and measurements required if the corner location was reestablished by lost corner proportionate methods. Also indicate name of the original surveyor, original survey date and the corner monument, bearing trees, witness or other reference monuments established, including measured bearing and distance ties, from available survey records.

In June 1863, Joseph H. Jenkins/GLO set no wood post as original MC as the West line of Section 24 traversed upon upland as Killarney Lake impounded by damming since.

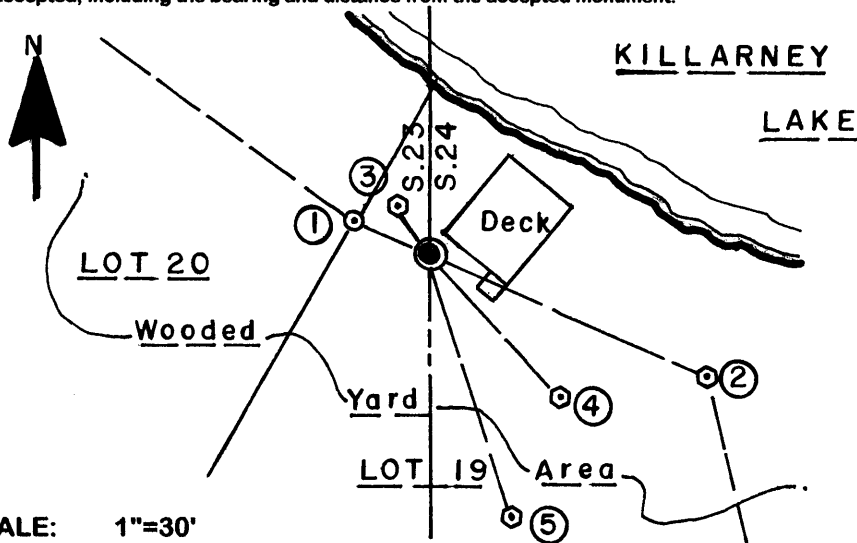
In April/May 1968, James G. Griffin/RLS 755 notes a 2" dia. iron pipe set as this Witness MC per legend on plat of Killarney Shores Division 2 filed in Oneida County records.

In August 2006, I found the older uncapped 2" dia. iron pipe monument, per foregoing record survey, 3" below grade as this Witness MC. As the old 2" iron pipe very stable, I left in place and drove a 5/8" dia. by 24" long rebar with yellow poly Reference Mark cap flush into the center of the old iron pipe for new witness ties noted below.

The corner falls 26' South of existing lake shoreline bearing N50°W at point of measure and in rear yard of improved lake Lot 19 per foregoing plat at Fire No. 2578 Killarney Drive.

This recovery completed August 11, 2006; there were no direct witnesses.

Plan view map of monument location with bearing and distance ties to a minimum of four(4) described witness or reference monuments of concrete, natural stone, iron, live bearing trees or equivalent material. If applicable, also show a minimum of two(2) bearing and distance ties to any other monument found and not accepted; including the bearing and distance from the accepted monument.



**WITNESS MONUMENT TIES:**

- ① Old 2" dia. iron pipe found flush N66°W 12.45'.
- ② Old 2" dia. iron pipe found flush S66°E 47.55'.
- ③ New 6" Sb BT N35°W 8.91'.
- ④ New 5" Sb BT S43°E 31.06' to PK & washer in left face.
- ⑤ New 9" Bw BT S18°E 43.26'.

I set a standard white poly 'T' marker post along the North side of old 2" dia. iron pipe corner monument.

SCALE: 1"=30'

Unless otherwise indicated, all bearing tree ties are to a .25" dia. by 2.5" long PK nail with a 1.25" dia. steel washer driven into unblazed right face and a .25" dia. by 2.5" long PK nail with a 2" dia. steel washer stamped BT is also driven into unblazed face of bearing tree at DBH; the basis for measured bearings is by compass to nearest degree and all tie distances are measured horizontal by steel tape corrected to nearest 1/100th feet at standard temperature of 68° F.

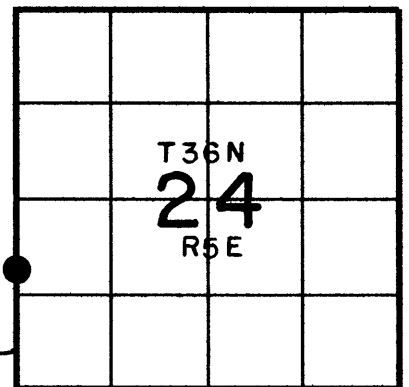
**RLS SEAL:**



**LAND SURVEYOR CERTIFICATE:**

I, William C. Rohde, hereby certify that I am duly licensed as a Professional Land Surveyor in the State of Wisconsin; that this USPLS monument location was determined by me and/or under my direct supervision and control; and that this U.S. Public Land Survey Monument Location Record is true and correct to the best of my knowledge and belief.

Signed: *William C. Rohde*  
William C. Rohde RLS 841



**SECTION LOCATION MAP**

INDEX NO. P Q 21

3605231400

JUN 12 2023

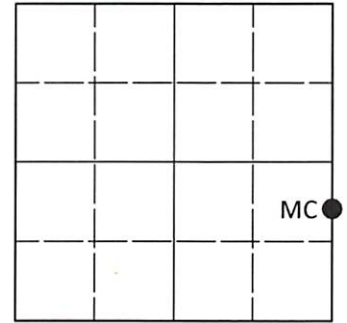
KYLE J. FRANSON  
REGISTER OF DEEDS

**U.S. PUBLIC LAND SURVEY MONUMENT RECORD**

Note: This form is intended and designed to fulfill all requirements of Wisconsin Administrative Code, Chapter A-E 7.08 U.S. Public Land Survey Monument Record (3)(a-i).

(a) CORNER LOCATION  
Meander Cor. of Secs. 23 & 24  
Township 36 North  
Range 5 East of the 4th P.M.  
Town of Little Rice  
County of Oneida

WISCRS - Oneida County  
N: 147,112.36 USft  
E: 160,308.51 USft  
Datum: NAD 83(2011) ep. 2010.00  
GNSS Method: RTN - Direct  
GNSS Control: WISCORS VRS



Sec. 23, T. 36 N., R. 5 E.

(b)(f)(g)(h) Description of monument found at this corner and if it was accepted, state all evidence (material, testimonial, occupational, plats, records, other monuments) used as a basis for accepting. If not accepted or if nothing was found, state evidence used as basis for establishing location. If re-established through lost corner proportionate methods, indicate all monuments, distances and directions used to establish. Indicate type of monument and sign post found or set.

This record is a perpetuation of the following land corner document(s):

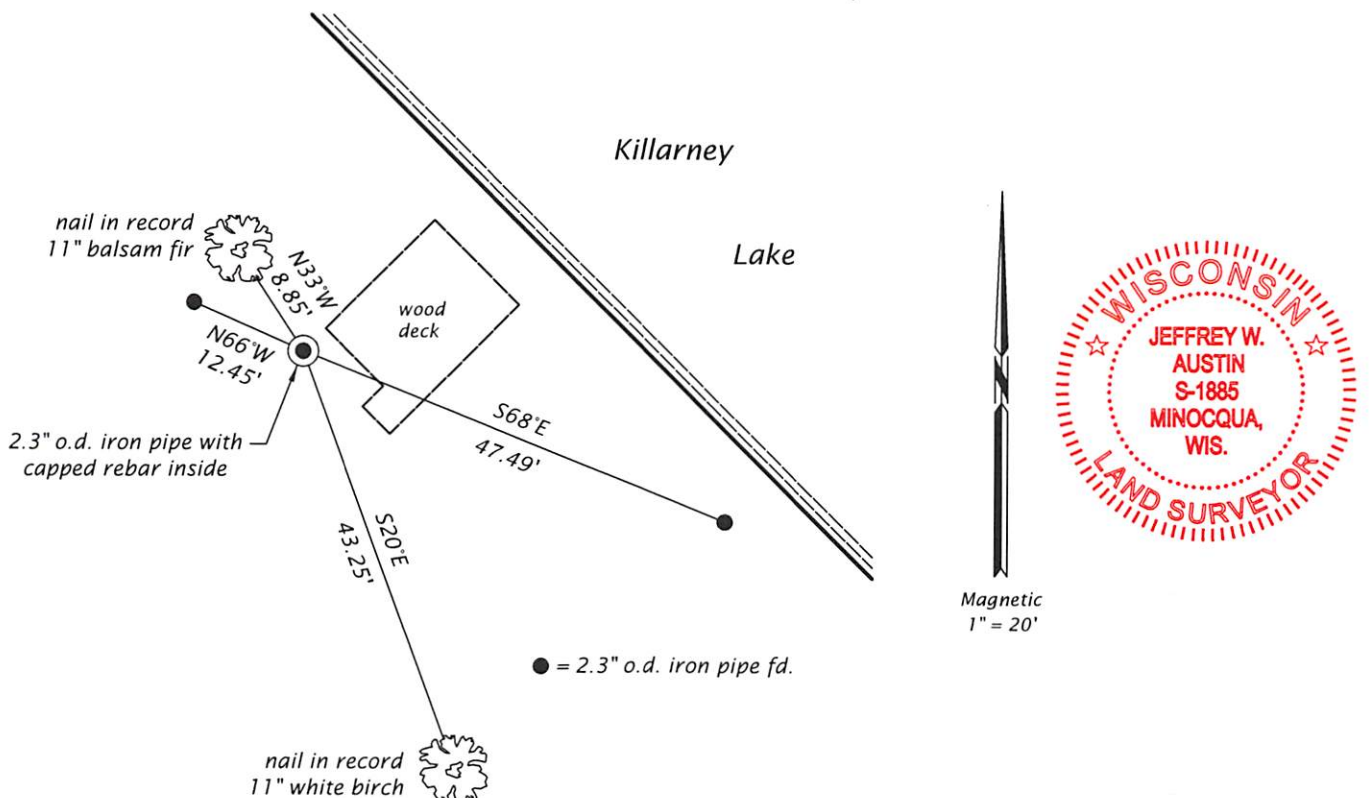
January 20, 2007: USPLS Monument Record by William C. Rohde, filed in Oneida County

A complete history of the corner can be found on the previous land corner document(s). I accept the record activity as a true and faithful perpetuation or reestablishment of the original corner location and further perpetuate it as described below.

May 15, 2023: I found and accepted the record monument, a 2.3" o.d. iron pipe, firmly set, flush with the ground surface. As described in the record, a capped rebar is inside the iron pipe. The #1 record reference monument was under ground water this date. I was unable to precisely measure it, but I believe the record distance is correct. The #4 record bearing tree is gone. I found or established accessories as indicated below. Due to the residential nature of the corner, a sign post was not set.

The coordinate value shown is the weighted mean of two or more GNSS observations at markedly different times satisfying the accuracy requirements defined and qualified in the 2022 Oneida County Fee Schedule for USPLS Corners.

(c)(d)(e) Plan view of corner with ties to at least 4 witness monuments. If in disagreement with previously established corner, show the distances between the two corners and also indicate the ties to the disputed.



(i) I, Jeffrey W. Austin, Professional Land Surveyor No. S-1885, hereby certify that the corner location on this record was determined by me or under my direction and control and that this U.S. Public Land Survey Monument Record is correct and complete to the best of my knowledge and belief.

*[Handwritten Signature]*  
Signature

JUNE 1, 2023  
Date