

ONEIDA COUNTY U.S. PUBLIC LAND SURVEY MONUMENT LOCATION RECORD

Oneida County
Land Information Office
Filed
10/8/2025

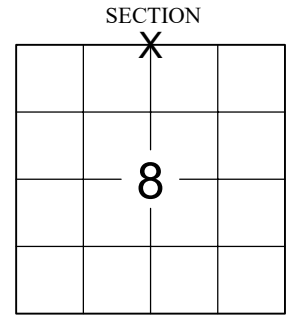
SECTION 8
TOWNSHIP 36 N
RANGE 6 E

LANDMARK BENCHMARK

FOUND
SET
RESET
RE-TIED

NOKOMIS
CITY, VILLAGE, TOWN

CORNER IDENTITY: NORTH 1/4 CORNER SECTION 8 - 1-1/4" O.D. IRON PIPE



ONEIDA COUNTY COORDINATE: N: 161236.446

E: 173219.136

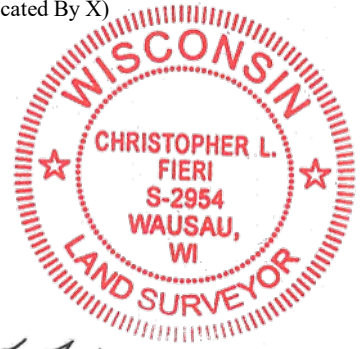
ELEVATION-(FEET): _____ DATUM: _____

WEATHER: SUNNY

DATE OF SURVEY: 8/12/2025 TEMPERATURE: 88 °F

SURVEY PARTY: CHRIS FIERI / RILEY SCHMIDT

LOCATION
(Indicated By X)



BASIS FOR MONUMENT LOCATION:

(DESCRIBE METHOD OF SURVEY AND CORNER AUTHENTICATION)

OCTOBER 1862 - JOSEPH H. JENKINS SET CORNER POST - BEARING TREES: 7" PINE, N64°E, 13 LINKS.
8" PINE, S71°W, 23 LINKS.

AUGUST 12, 2025 - WE SEARCHED FOR ANY EVIDENCE OF THE CORNER LOCATION AND FOUND NOTHING. WE SET A 1-1/4" X 24" IRON PIPE AT THE CORNER LOCATION BY SINGLE SINGLE PROPORTIONATE MEASURE BETWEEN THE NORTHEAST AND NORTHWEST CORNERS OF SECTION 8. WE SET FOUR 3/4" X 24" IRON BARS TO PERPETUATE THE CORNER LOCATION AS SHOWN BELOW.

CERTIFIED CORRECT:

Christopher L. Fieri

CHRISTOPHER L. FIERI S-2954

Registered Land Surveyor

DATE: 9-24-25

FIELD BOOK NO. NA PAGE NO. NA

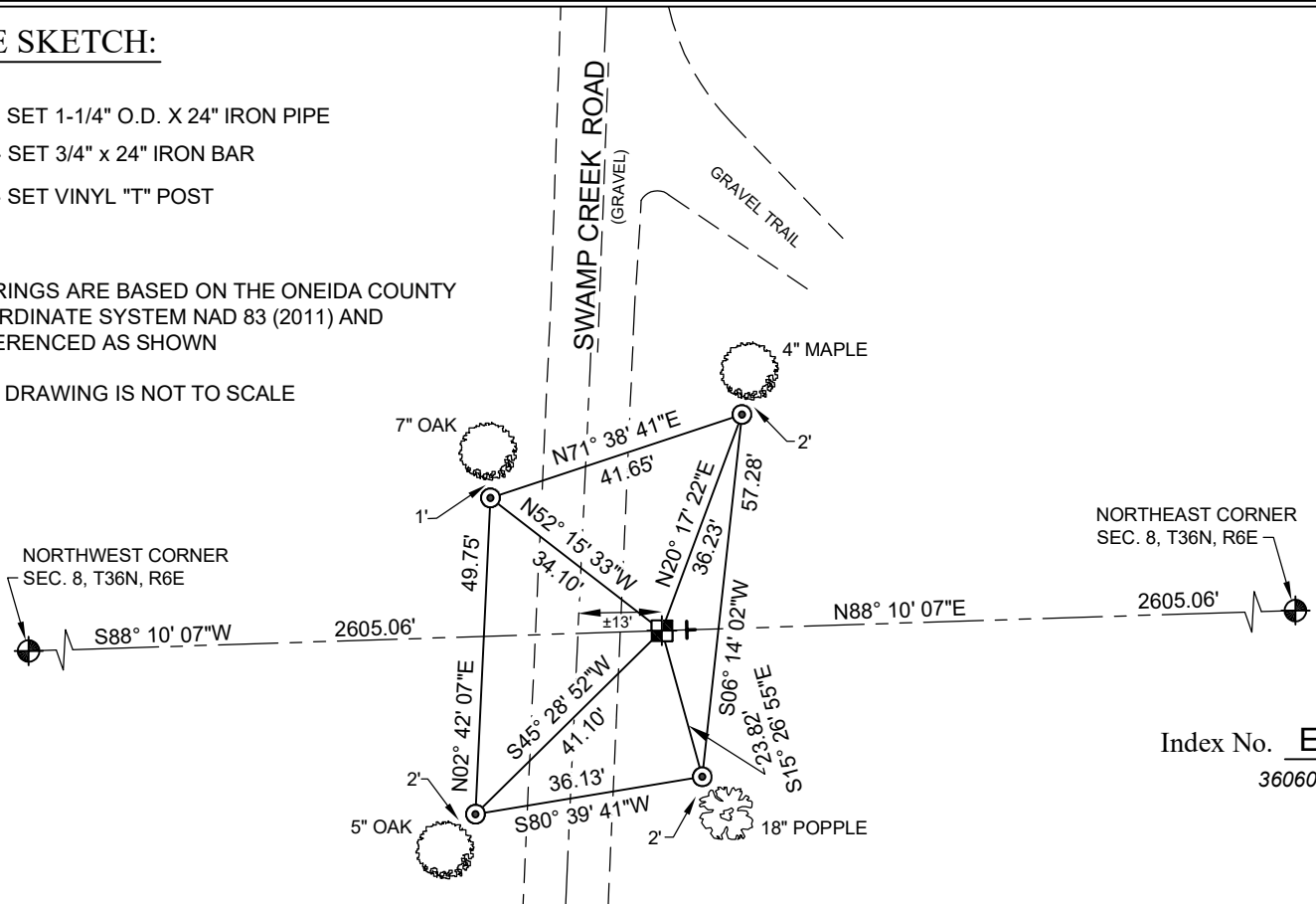
COMPANY RIVERSIDE LAND SURVEYING LLC

TIE SKETCH:

- SET 1-1/4" O.D. X 24" IRON PIPE
- SET 3/4" x 24" IRON BAR
- SET VINYL "T" POST

BEARINGS ARE BASED ON THE ONEIDA COUNTY COORDINATE SYSTEM NAD 83 (2011) AND REFERENCED AS SHOWN

THIS DRAWING IS NOT TO SCALE



Index No. E - 7
3606050020