

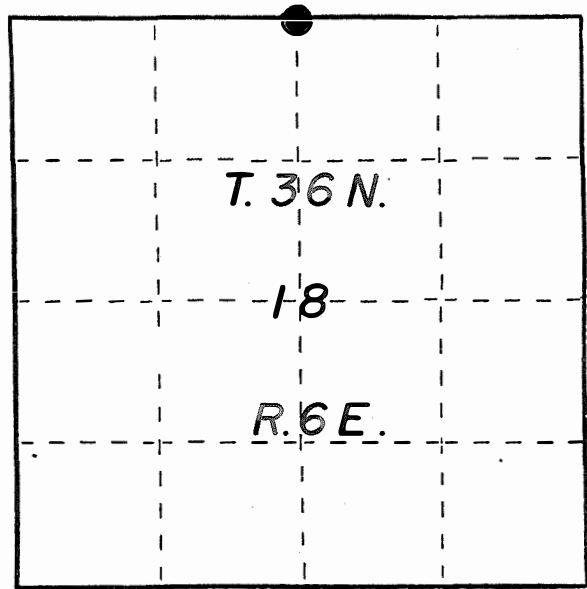
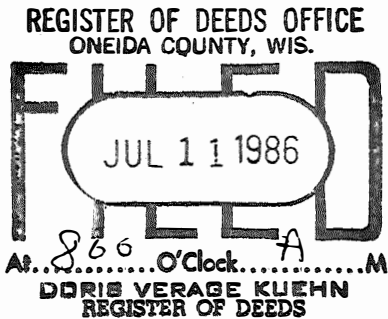
U. S. PUBLIC LAND SURVEY MONUMENT RECORD

INSTRUCTIONS :

This record shall show the location of the corner and shall include all of the following nine elements (a through i).

- (a) Identify the corner by reference to the U.S. public land survey system.

○ = Corner monument restored.



- (b) Describe any record evidence, monument evidence, occupational evidence, testimonial evidence or any other material evidence you considered, and whether the monument was found or placed.

Recovered a 1½" iron pipe at the north end of Old North-South quarter line fence. Running south and 33.0 ft. of centerline of Lee Road. Occupational evidence of many years.

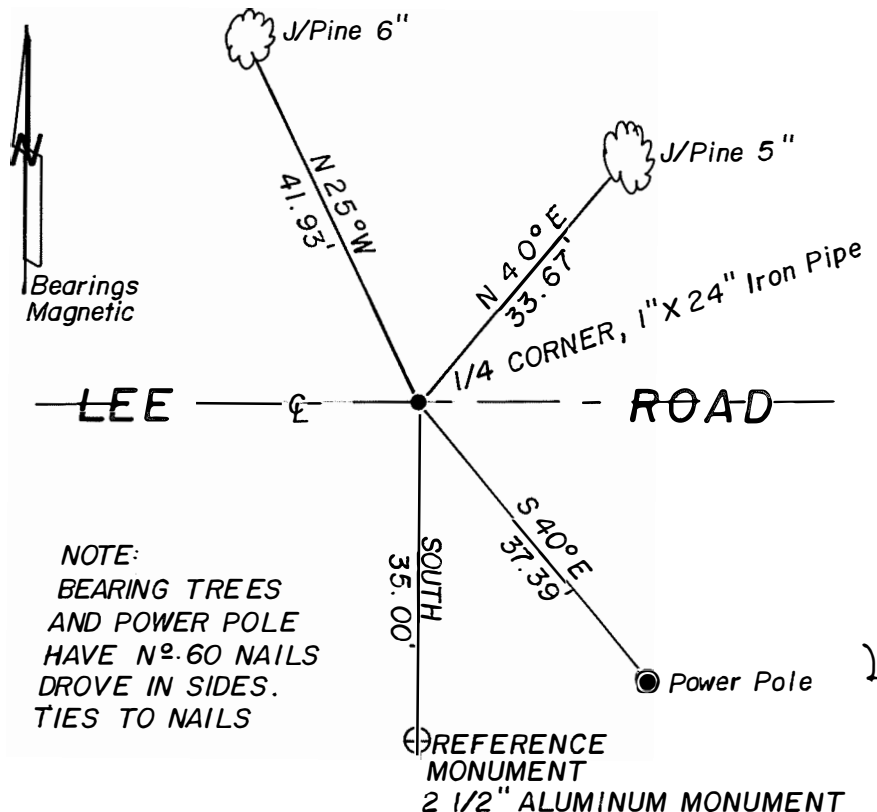
- (c) In the plan view drawing below, provide reference ties to at least 4 witness monuments, or, if the location is within a municipality, to at least 2 witness monuments. (Witness monuments shall be made of concrete, natural stone, iron or other equally durable material.) Describe witness monuments.

- (d) Show a plan view drawing depicting the relevant monuments and reference ties which is sufficient in detail to enable accurate relocation of the corner monument if the corner monument is disturbed. Indicate north.

ALLOY CAP STAMPED:

T36N		R6E	
1	S	7	REF.
4	S	18	COR.
N. 35 FT TO COR.			
S1682		1984	

SCALE : 1" = 20'



U.S. PUBLIC LAND SURVEY MONUMENT RECORD

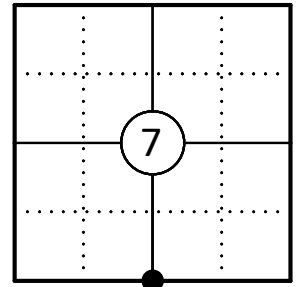
This form is intended and designed to fulfill all requirements of Wisconsin Administrative Code, Chapter A-E 7.08 U.S. Public Land Survey Monument Record (3) (a)(b)(c)(d)(e)(f)(g)(h)(i).

Oneida County
Land Information Office
Filed
9/4/2025

A-E 7.08(3)(a) Identity of the corner:

South 1/4 Corner Section 7
Township 36 North
Range 6 East
Town of Nokomis
County of Oneida

Corner ID: 3606070020



Original Corner Information:

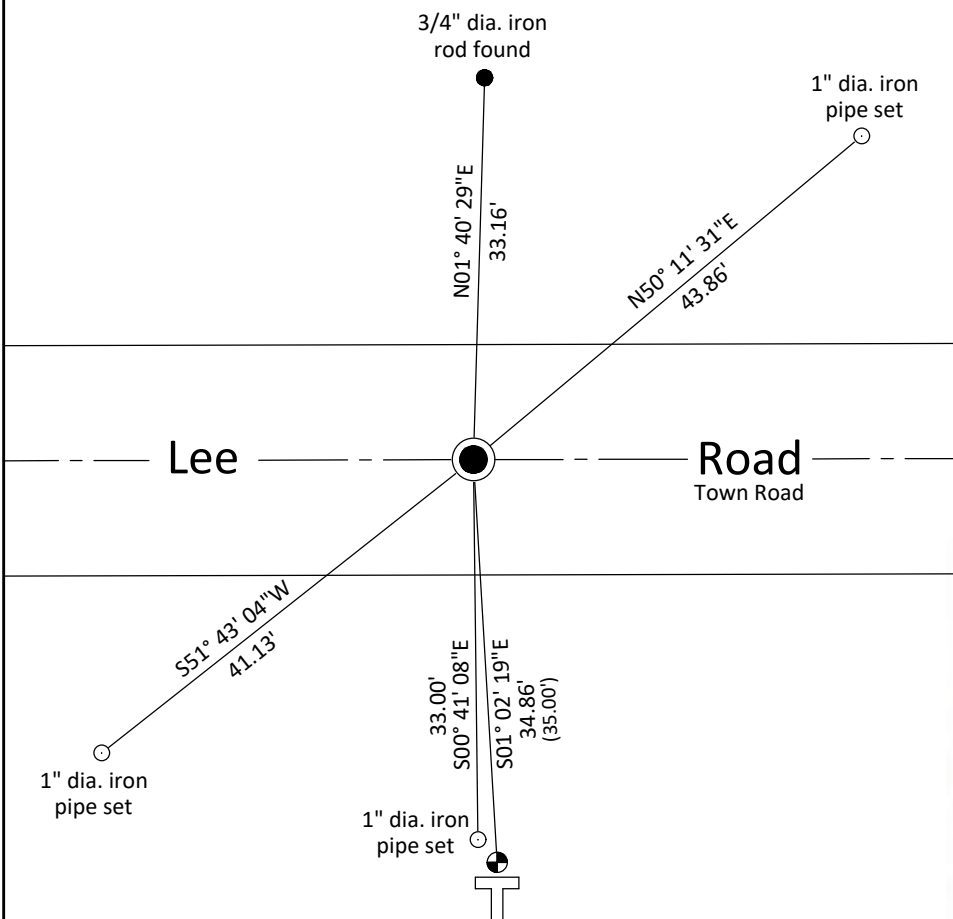
Original Surveyor: Joseph H. Jenkins Original B.T.'s: 9" Yellow Pine - N38°W, 192 links
Date of Survey: October 1862

A-E 7.08(3)(b)(e)(f)(g) Describe any record evidence, monument evidence, occupational evidence, testimonial evidence or any other material evidence considered. Describe any discrepancy between the corner restored and any previously established location. State whether the corners was restored through acceptance of obliterated evidence, a found perpetuated location, or determined by proportionate methods.

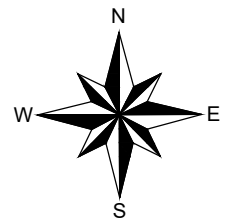
For corner history, see previous U.S. Public Land Survey Monument Record by Glen Barker dated January 17, 1984.

06/03/2025 I found and accepted a 1-1/4" dia iron pipe near the centerline of Lee Road along with a 2-1/2" dia. aluminum capped reference monument. Both of Bakers two bearing trees and the power pole were gone. I made three additional reference monuments to witness the corner as shown below.

A-E 7.08(3)(c)(d)(e)(h) Plan view of corner with ties to at least four witnesses. If in disagreement with previously established corner, show the distances between the two corners and also indicate the tie to the disputed corner. Distances and directions to other PLSS used as evidence or for proportioning.



Bearings given to the nearest second are Oneida County Grid. All other bearings are magnetic



- * Vinyl "T" post 1' south of aluminum capped reference monument
- * Sketch is not to scale



A-E 7.08(3)(i) - Certification

I, Gregory S. Maines, Professional Land Surveyor No. 2729, hereby certify that the corner location on this record was referenced by me or under my direction and control and that this U.S. Public Land Survey Monument Record is complete to the best of my knowledge and belief.
REF: 2025154

Index No.: