

# U.S. PUBLIC LAND SURVEY MONUMENT LOCATION RECORD

Recorders Data

CORNER: NW Section SECTION: 14 TOWNSHIP 36 NORTH RANGE 6 EAST/WEST

FOR M.C. CORNER INDICATE: NAME OF WATERWAY N/A SECTION LINE N/A

(CITY)(VILLAGE)(TOWN) OF: Nokomis COUNTY OF: Oneida

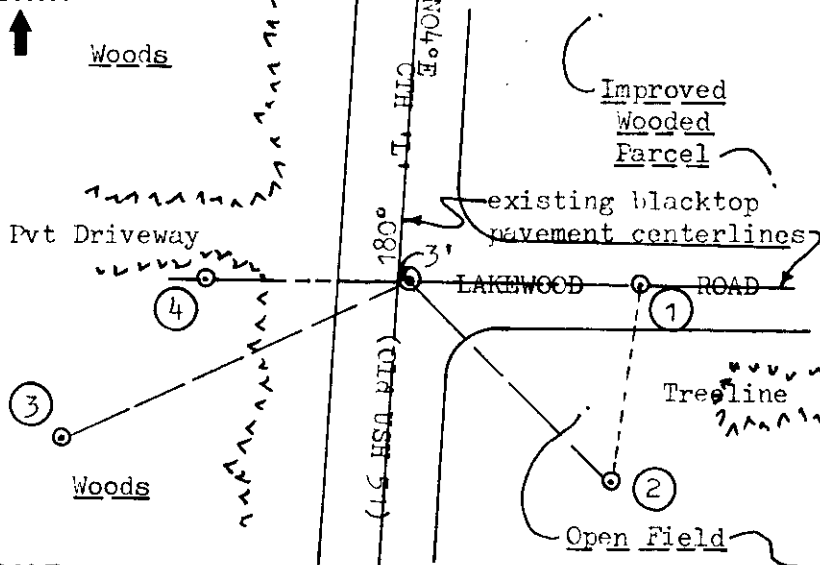
Description of monument found or placed and all other evidence used as a basis for monument location; including all monuments and related measurements required if the corner location is reestablished by lost corner proportionate methods. Also indicate name of original surveyor, survey date, corner monument set and established bearing trees, witness or reference monuments with ties from available records.

No physical evidence of this corner nor any reference or witness monuments were observed or detected by careful examination of the nearby site, including the availability of any record evidence of reliability for reestablishment purposes. Upon query, Wisconsin DOT district office in Rhinelander, Wis. also did not have related field survey notes in their records. In 1862, Jenkins/GLO had set a wood post as the original section corner and also marked OBTs, an 8" Pj S11°E 24 lks, a 5" Pj N67°W 18 lks, a 6" Pj S09°W 53 lks and a 7" Pj S28°E 30 lks, all of which are obliterated within the existing highway corridor. Also, the existing roadway intersection evidences a cut section by design which undoubtedly destroyed any corner monumentation evidence, if any, at this location.

Preparatory to a land survey of the adjacent parcel SE of this corner by Foltz & Associates of Minocqua, Wis. I had recovered old 1 1/4" dia. iron shaft monuments at the N1/16NW and the North 1/4 corner of Section 14, which were witnessed by an elderly local resident as having existed for at least 25 years or more; whereupon, Foltz & Associates, Inc. used said iron shaft monuments to reestablish this section corner by doubling over the distance between on a right line westerly and set a 3/4" dia. by 12" long steel shaft in the existing blacktop pavement to monument the section corner, which I found and referenced as indicated below. Such reestablishment is clearly represented upon a Plat of Survey prepared for record by Foltz & Associates, their File #4-14-366 dated August 20, 1998, sealed by Stuart Foltz/RLS.

Plan view map of monument location with bearing and distance ties to a minimum of four(4) described witness or reference monuments of concrete, natural stone, iron, live bearing trees or equivalent material. If applicable, also show a minimum of two(2) bearing and distance ties to any other monument found and not accepted; including the bearing and distance from the accepted monument. Indicate the basis for bearings of reference ties if not referenced to magnetic north.

NORTH



WITNESS MONUMENT TIES:

- ① 3/4" dia. iron pipe found flush in blacktop pavement S88°E 60.00'.
- ② 1" dia. by 24" long iron pipe set with standard yellow poly Reference Mark cap flush S42°E 74.80', which is also S10°W 50.46' from Witness No. 1 above.
- ③ New BT 8" Pr S66°W 100.86'.
- ④ Same as Witness No. 1 N88°W 53.76'.

Note: A standard white poly 'T' post also set 6" West of Witness #4. This recovery completed August 24, 1998; there were no direct witnesses.

SCALE: 1" = 50'

Unless otherwise indicated, all bearing tree ties are to a .25" dia. by 2.5" long PK nail with a 1.25" dia. steel washer driven into unblazed right face and a .25" dia. by 2.5" long PK nail with a 2" dia. steel washer stamped 'BT' is also driven into unblazed face of bearing tree at DBH; the basis for measured bearings is magnetic to nearest degree and all tie distances are horizontal measure to nearest 1/100th feet.

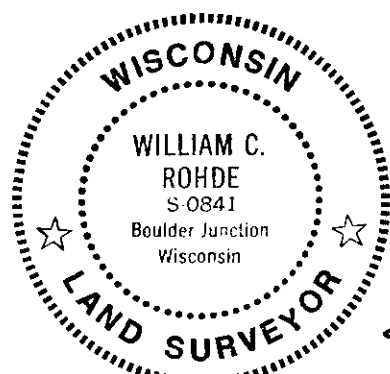
### LAND SURVEYOR CERTIFICATION:

I, William C. Rohde, hereby certify that I am a duly licensed Professional Land Surveyor in Wisconsin, that this USPLS monument location was determined by me or under my direction and control, and that this U.S. Public Land Survey Monument Location Record is true and correct to the best of my knowledge and belief.

*William C. Rohde* Date: 9-26-98  
Signature

	T36N		
	14		
	R6E		

INDEX NO.



RLS SEAL

SHEET NO. 1 OF 1

This form is intended to fulfill requirements of Chapter A-E 7.08 (3)(a)(b)(c)(d)(e)(f)(g)(h)(i) U.S. Public Land Survey Monument Location Record, Wisconsin Administrative Code. Use reverse side for geodetic location data and/or continuation purposes.

SECTION LOCATION MAP

INDEX NO. J 17  
3606 100000

# ONEIDA COUNTY U.S. PUBLIC LAND SURVEY MONUMENT LOCATION RECORD

Oneida County  
Land Information Office  
Filed  
12/15/2025

SECTION 14  
TOWNSHIP 36 N  
RANGE 6 E

LANDMARK       BENCHMARK \_\_\_\_\_

FOUND   
SET   
RESET   
RE-TIED

CORNER IDENTITY: BERNTSEN SNM-1 STEEL NAIL MARKER

ONEIDA COUNTY COORDINATE: N: 156256.730  
E: 186523.280

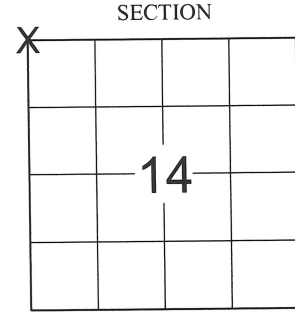
ELEVATION-(FEET): \_\_\_\_\_ DATUM: \_\_\_\_\_

WEATHER: PARTLY CLOUDY

DATE OF SURVEY: 10/7/2025 TEMPERATURE: 55 °F

SURVEY PARTY: KEITH WALKOWSKI

NOKOMIS  
CITY, VILLAGE, TOWN



**BASIS FOR MONUMENT LOCATION:**  
(DESCRIBE METHOD OF SURVEY AND CORNER AUTHENTICATION)

SEARCHED FOR THE NORTHWEST CORNER OF SECTION 14 AND FOUND THE CALLED FOR 3/4" IRON ROD AND 3 TIES FROM THE RECORD TIE SHEET DATED 8/26/1998 BY WILLIAM ROHDE. UPON COMPLETION OF THE ASPHALT PAVING PROJECT ON COUNTY ROAD "L", I SET A BERNTSEN SNM-1 STEEL NAIL MARKER AT THE CORNER LOCATION AND ADDED ADDITIONAL TIES AS SHOWN BELOW TO PERPETUATE THE CORNER LOCATION.

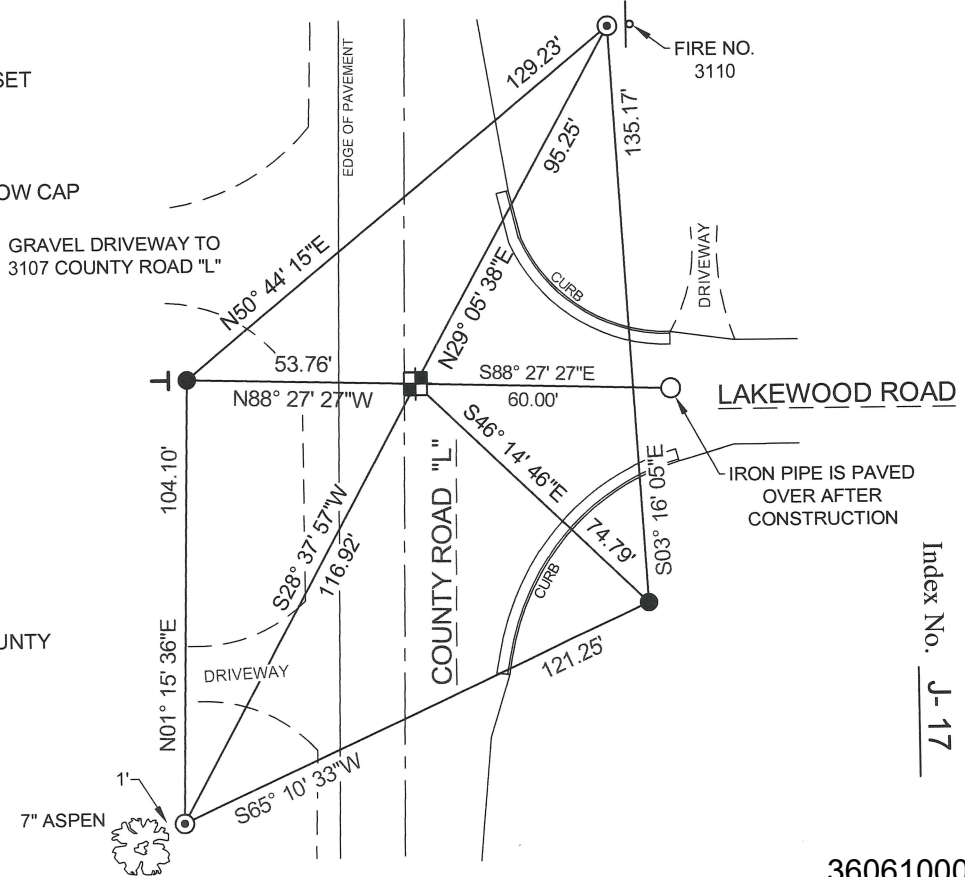


CERTIFIED CORRECT:  
*Keith J. Walkowski*  
KEITH J. WALKOWSKI S-2717  
Registered Land Surveyor  
DATE: 10/27/2025

FIELD BOOK NO. NA PAGE NO. NA  
COMPANY RIVERSIDE LAND SURVEYING LLC

**TIE SKETCH:**

- BERNTSEN SNM-1 STEEL NAIL MARKER SET
- - FOUND 1" O.D. IRON PIPE
- ⊙ - 3/4" x 24" REBAR SET
- - FOUND 1-1/4" O.D. IRON PIPE WITH YELLOW CAP
- T - FOUND WHITE "T" POST
- ⊕ - FOUND SIGN



NOTE: CORNER LIES 2.7' EAST OF THE CENTERLINE OF COUNTY ROAD "L".  
BEARINGS ARE BASED ON THE ONEIDA COUNTY COORDINATE SYSTEM NAD 83 (2011) AND REFERENCED AS SHOWN  
THIS DRAWING IS NOT TO SCALE

Index No. J-17