

# U.S. PUBLIC LAND SURVEY MONUMENT LOCATION RECORD

Recorders Data

CORNER: West 1/4 SECTION: 14 TOWNSHIP 36 NORTH RANGE 6 EAST/WEST

FOR M.C. CORNER INDICATE: NAME OF WATERWAY N/A SECTION LINE N/A

(CITY)(VILLAGE)(TOWN) OF: Nokomis COUNTY OF: Oneida

Description of monument found or placed and all other evidence used as a basis for monument location; including all monuments and related measurements required if the corner location is reestablished by lost corner proportionate methods. Also indicate name of original surveyor, survey date, corner monument set and established bearing trees, witness or reference monuments with ties from available records.

Found and accepted a 3/4" dia. by 12" long steel shaft set flush in existing blacktop road pavement by Foltz & Associates, Inc. in place of a broken off PK nail found at this corner location and further verified by a retracement survey of the West line of Section 14 in August 1998.

In 1862, Jenkins/GLO set a wood post as the original quarter corner and marked BTs, a 7" Pj S77°E 40 lks and noted no other BT near, all of which are now obliterated with roadway area.

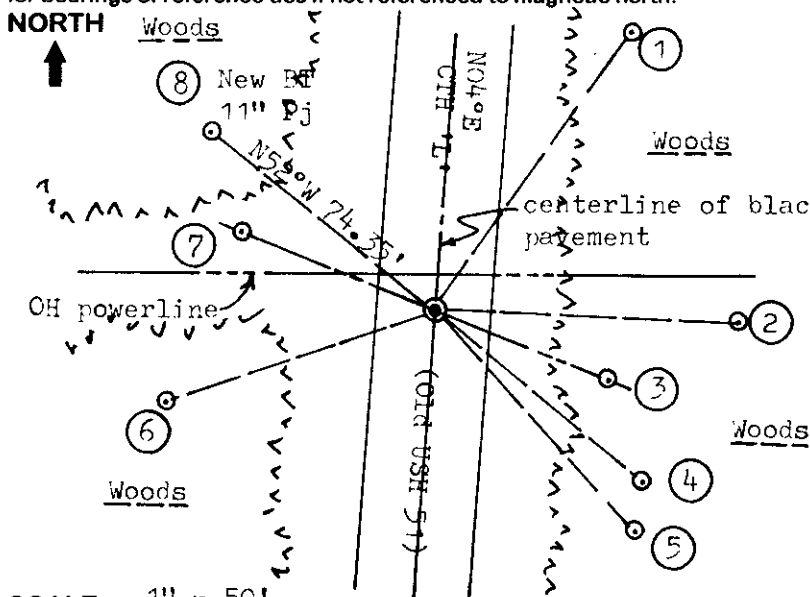
In 1903, it is noted on Page 79 of Old Fieldbook 4A in Oneida County survey records, that E.F. Dorr identified the gun barrel he had placed at the corner in May 1901 in lieu of wood post.

In 1991, Schmit/Timberland Surveyors of Tomahawk, denotes "P.K. nail over gun barrel found in place" at this corner, per his Plat of Survey filed as B-3389 in Oneida County survey records, which Foltz & Associates verified by a retracement of quarterline west by Schmit.

This recovery completed August 21, 1998; there were no direct witnesses other than vehicle drive-bys. I also set a standard white poly 'T' marker post 6" NW of iron pipe Witness #7 indicated below.

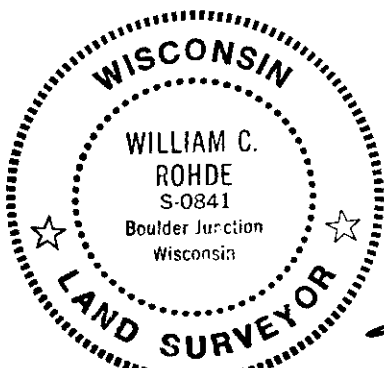
The corner falls 18" East of the pavement centerline, which is exactly half of the 36" from pavement centerline East to the iron shaft set by Foltz & Associates at NW corner of Sect. 14.

Plan view map of monument location with bearing and distance ties to a minimum of four(4) described witness or reference monuments of concrete, natural stone, iron, live bearing trees or equivalent material. If applicable, also show a minimum of two(2) bearing and distance ties to any other monument found and not accepted; including the bearing and distance from the accepted monument. Indicate the basis for bearings of reference ties if not referenced to magnetic north.



- WITNESS MONUMENT TIES:**
- ① New BT 7" Pr N35°E 88.85'.
  - ② PK/washer in left face of old 15" Pr BT with open blaze above root crown scribed "1/4S BT", S88°E 79.36'.(unrecorded)
  - ③ 1" dia. by 24" long iron pipe set with standard Reference Mark cap
  - ⑦ 1" above grade on a right line thru corner S68°E 48.66' and N68°W at 54.29'.
  - ④ New BT 9" Pj S50°E 69.86'.
  - ⑤ Old BT 10" Pj with open blaze above root crown scribed "1/4S BT", S42°E 71.86'.(unrecorded)
  - ⑥ New BT South 9" trunk of triple shagbark hickory S71°W 74.64'.

SCALE: 1" = 50'  
 Unless otherwise indicated, all bearing tree ties are to a .25" dia. by 2.5" long PK nail with a 1.25" dia. steel washer driven into unblazed right face and a .25" dia. by 2.5" long PK nail with a 2" dia. steel washer stamped 'BT' is also driven into unblazed face of bearing tree at DBH; the basis for measured bearings is magnetic to nearest degree and all tie distances are horizontal measure to nearest 1/100th feet.



**LAND SURVEYOR CERTIFICATION:**

I, William C. Rohde, hereby certify that I am a duly licensed Professional Land Surveyor in Wisconsin, that this USPLS monument location was determined by me or under my direction and control, and that this U.S. Public Land Survey Monument Location Record is true and correct to the best of my knowledge and belief.

*William C. Rohde* Date: 8-26-98  
 Signature

		T36N	
		14	
		R6E	

**SECTION LOCATION MAP**

INDEX NO. L-17  
3606152000

RLS SEAL

SHEET NO. 1 OF 1

This form is intended to fulfill requirements of Chapter A-E 7.08 (3)(a)(b)(c)(d)(e)(f)(g)(h)(i) U.S. Public Land Survey Monument Location Record, Wisconsin Administrative Code. Use reverse side for geodetic location data and/or continuation purposes.

INDEX NO. L-17

# ONEIDA COUNTY U.S. PUBLIC LAND SURVEY MONUMENT LOCATION RECORD

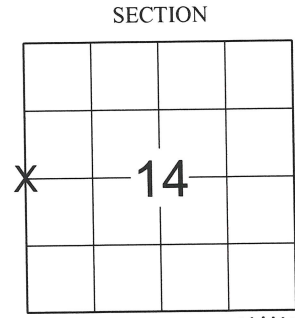
Oneida County  
Land Information Office  
Filed  
12/15/2025

SECTION 14  
TOWNSHIP 36 N  
RANGE 6 E

LANDMARK       BENCHMARK  
CORNER IDENTITY: BERNTSEN SNM-1 STEEL NAIL MARKER  
ONEIDA COUNTY COORDINATE: N: 153621.953  
E: 186482.056  
ELEVATION-(FEET): \_\_\_\_\_ DATUM: \_\_\_\_\_  
WEATHER: PARTLY CLOUDY  
DATE OF SURVEY: 10/7/2025 TEMPERATURE: 55 °F  
SURVEY PARTY: KEITH WALKOWSKI

FOUND   
SET   
RESET   
RE-TIED

NOKOMIS  
CITY, VILLAGE, TOWN



## BASIS FOR MONUMENT LOCATION:

(DESCRIBE METHOD OF SURVEY AND CORNER AUTHENTICATION)

SEARCHED FOR THE WEST 1/4 CORNER OF SECTION 14 AND FOUND THE CALLED FOR 3/4" IRON ROD AND 4 TIES FROM THE RECORD TIE SHEET DATED 8/26/1998 BY WILLIAM ROHDE. UPON COMPLETION OF THE ASPHALT PAVING PROJECT ON COUNTY ROAD "L", I SET A BERNTSEN SNM-1 STEEL NAIL MARKER AT THE CORNER LOCATION AND ADDED 2 ADDITIONAL TIES AS SHOWN BELOW TO PERPETUATE THE CORNER LOCATION.

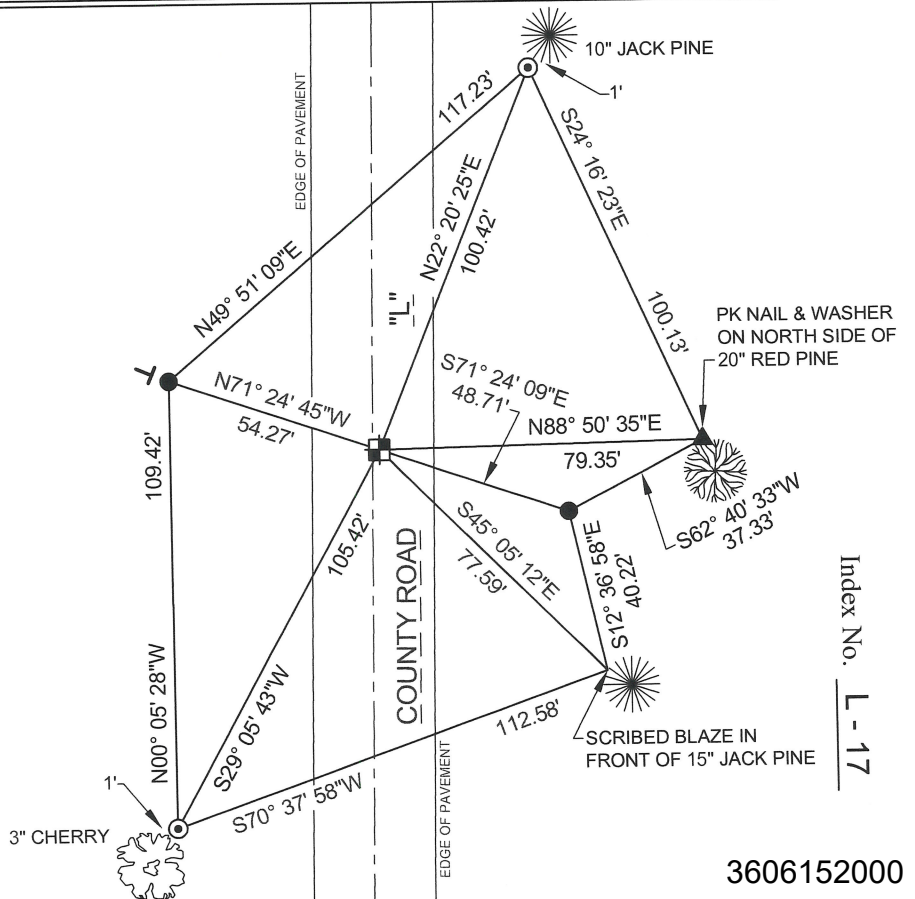


CERTIFIED CORRECT:  
*Keith J. Walkowski*  
\_\_\_\_\_  
KEITH J. WALKOWSKI S-2717  
Registered Land Surveyor  
DATE: 10/27/2025

FIELD BOOK NO. NA PAGE NO. NA  
COMPANY RIVERSIDE LAND SURVEYING LLC

## TIE SKETCH:

- BERNTSEN SNM-1 STEEL NAIL MARKER SET
- ⊙ - 3/4" x 24" REBAR SET
- - FOUND 1-1/4" O.D. IRON PIPE WITH YELLOW CAP
- ▲ - FOUND PK NAIL & WASHER
- T - FOUND WHITE VINYL "T" POST



NOTE: CORNER LIES 1.7' EAST OF THE CENTERLINE OF COUNTY ROAD "L".

BEARINGS ARE BASED ON THE ONEIDA COUNTY COORDINATE SYSTEM NAD 83 (2011) AND REFERENCED AS SHOWN

THIS DRAWING IS NOT TO SCALE

Index No. L-17

3606152000