

U.S. PUBLIC LAND SURVEY MONUMENT LOCATION RECORD

Recorders Data

CORNER: NW Section SECTION: 28 TOWNSHIP 36 NORTH RANGE 6 EAST/WEST

FOR M.C. CORNER INDICATE: NAME OF WATERWAY N/A SECTION LINE N/A

~~(CITY)~~(VILLAGE)(TOWN) OF: Nokomis COUNTY OF: Oneida

Description of monument found or placed and all other evidence used as a basis for monument location; including all monuments and related measurements required if the corner location is reestablished by lost corner proportionate methods. Also indicate name of original surveyor, survey date, corner monument set and established bearing trees, witness or reference monuments with ties from available records.

Found a PK nail in blacktop pavement surface at this corner location with orange paint ring recently by Austin for Oneida Co. GPS acquisition project; I carefully referenced the PK and chiseled a 5" dia. hole thru the blacktop to reveal the undisturbed battered top of an old 2" dia. iron pipe monument which I accepted at this corner, 2" below pavement surface. As an aid to future recovery and usage, I drove 3/4" dia. by 2 1/2" long PK spikes in the blacktop 12" North, South, East and West of the corner monument center on right lines; I marked the center of old 2" iron pipe with a new 60d spike in place of an older 1" long PK found. No other metal evidence observed or detected within the nearby roadway intersection area by magnetic locator other than an old power pole guy anchor about 45' NE off edge of existing blacktop turning radius. Corner is 1 1/2' South of E/W road mat center and 2' West of road mat center No.

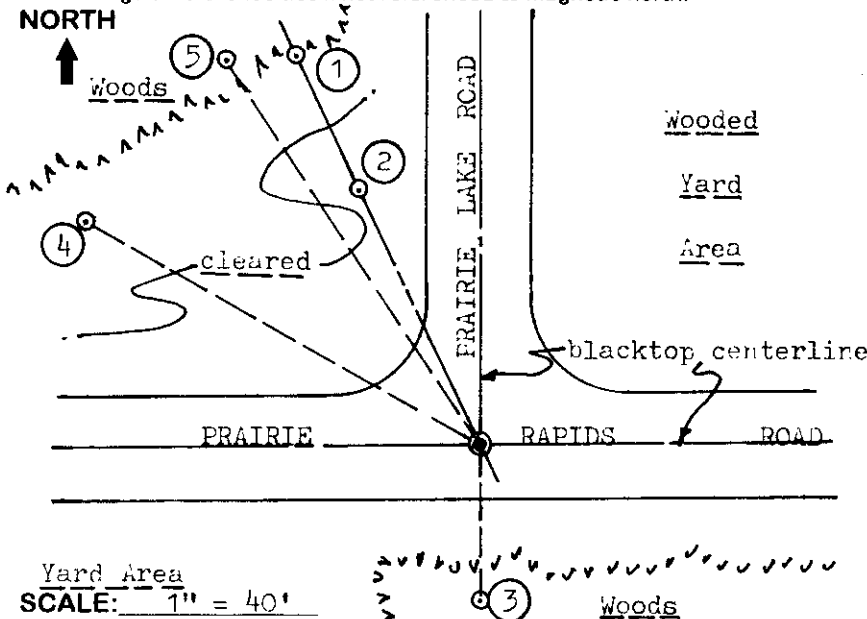
In 1862, Jenkins/GLO set a wood post as the original corner location and marked BTs, a 20" Py S72°E 340 lks and a 7" Pb(Pj) N08°W 135 lks, all of which are now obliterated or unreliable remains for location purposes.

In 1984, Barker/Consolidated Papers, indicated a 2" dia. iron pipe at this corner per map legend on his Section Subdivision Plat of Survey B-492, Oneida County records.

This recovery completed June 23, 1998; there were no witnesses other than vehicle drive-bys. Standard white poly 'T' marker post also found 15" East of Witness No. 1.

Plan view map of monument location with bearing and distance ties to a minimum of four(4) described witness or reference monuments of concrete, natural stone, iron, live bearing trees or equivalent material. If applicable, also show a minimum of two(2) bearing and distance ties to any other monument found and not accepted; including the bearing and distance from the accepted monument. Indicate the basis for bearings of reference ties if not referenced to magnetic north.

NORTH

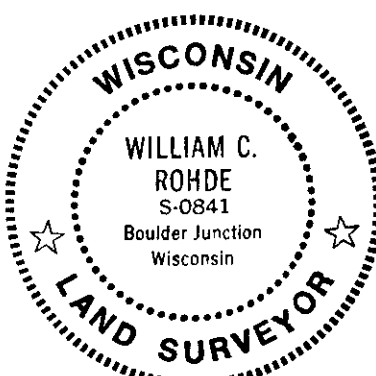


WITNESS MONUMENT TIES:

- ① Standard 2" dia. aluminum pipe monument found with Oneida Co. cap stamped by Barker, RLS 1682 in 1993 flush with grade N25°W 96.00'.
- ② 1" dia. by 24" long iron pipe set with standard Reference Mark cap flush N25°W 58.87' on right line from corner to Witness No. 1.
- ③ Old 2" dia. property corner pipe found 1" above grade South 33.00'.
- ④ Old BT 20" Pw N60°W 95.26' with upper and lower blazes plain, scribed and painted blue.
- ⑤ New BT 20" Pr N33°W 96.05'.

Yard Area
SCALE: 1" = 40'

Unless otherwise indicated, all bearing tree ties are to a .25" dia. by 2.5" long PK nail with a 1.25" dia. steel washer driven into unblazed right face and a .25" dia. by 2.5" long PK nail with a 2" dia. steel washer stamped 'BT' is also driven into unblazed face of bearing tree at DBH; the basis for measured bearings is magnetic to nearest degree and all tie distances are horizontal measure to nearest 1/100th feet.



LAND SURVEYOR CERTIFICATION:

I, William C. Rohde, hereby certify that I am a duly licensed Professional Land Surveyor in Wisconsin, that this USPLS monument location was determined by me or under my direction and control, and that this U.S. Public Land Survey Monument Location Record is true and correct to the best of my knowledge and belief.

William C. Rohde Date: 6-25-98
Signature

		28	

INDEX NO.

RLS SEAL

SHEET NO. 1 OF 1

This form is intended to fulfill requirements of Chapter A-E 7.08 (3)(a)(b)(c)(d)(e)(f)(g)(h)(i) U.S. Public Land Survey Monument Location Record, Wisconsin Administrative Code. Use reverse side for geodetic location data and/or continuation purposes.

SECTION LOCATION MAP

INDEX NO. R 9
3606 200000

U.S. PUBLIC LAND SURVEY MONUMENT RECORD

This form is intended and designed to fulfill all requirements of Wisconsin Administrative Code, Chapter A-E 7.08 U.S. Public Land Survey Monument Record (3) (a)(b)(c)(d)(e)(f)(g)(h)(i).

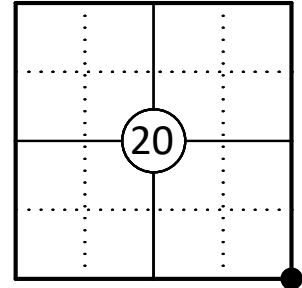
The coordinate value shown has been verified by at least one of the following methods: 1) Comparison to a previously GNSS determined published value; 2) The value is the average of two or more GNSS observations at a markedly different time; 3) One or more distances were measured back to the GNSS observed corner from temporary GNSS observed offset locations.

Oneida County
Land Information Office
Filed
9/4/2025

A-E 7.08(3)(a) Identity of the corner:

SE Corner Section 20	WISCRS - Oneida County
Township 36 North	N: 145,448.75 USFT
Range 6 East	E: 175,789.17 USFT
Town of Nokomis	Datum: NAD 83 (2011)
County of Oneida	GNSS Method: WISCRS VRS Direct Observation

Corner ID: 3606200000



Original Corner Information:

Original Surveyor: Jenkins	Original B.T.'s: Py 20" - S72°E, 340 links
Date of Survey: 1862	Pb (Pj) 7" - N08°W, 135 links

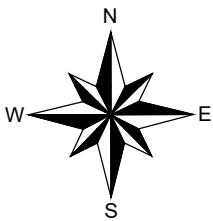
A-E 7.08(3)(b)(e)(f)(g) Describe any record evidence, monument evidence, occupational evidence, testimonial evidence or any other material evidence considered. Describe any discrepancy between the corner restored and any previously established location. State whether the corners was restored through acceptance of obliterated evidence, a found perpetuated location, or determined by proportionate methods.

For previous corner history see monument record by William C. Rohde, dated June 23, 1998.

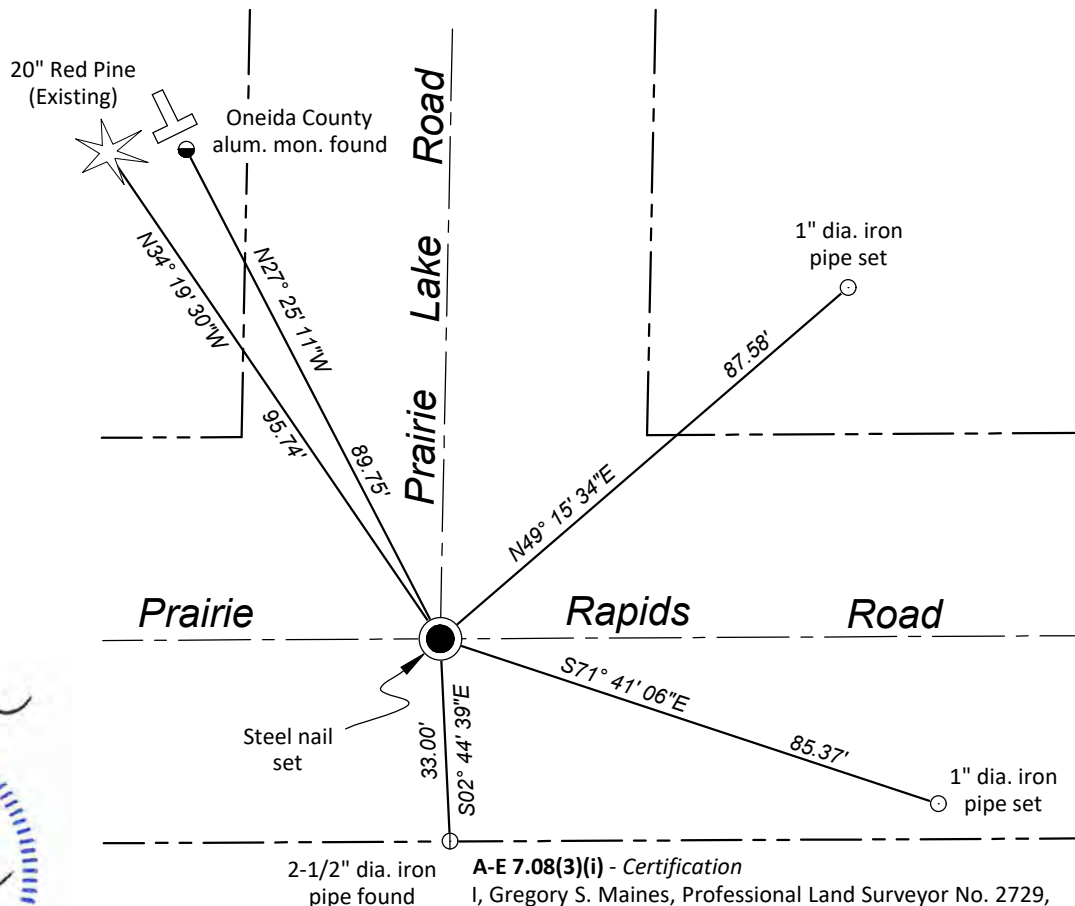
07/11/2025 I searched for and didn't find the steel nail in the road set by Rohde. I found two existing reference monuments and one bearing tree. I set a new steel nail at the published Oneida County coordinates. This fit well with the existing reference monuments and surveys done in this area. I set two new reference monuments to witness the corner as shown below.

A-E 7.08(3)(c)(d)(e)(h) Plan view of corner with ties to at least four witnesses. If in disagreement with previously established corner, show the distances between the two corners and also indicate the tie to the disputed corner. Distances and directions to other PLSS used as evidence or for proportioning.

Bearings given to the nearest second are Oneida County Grid all other bearings are magnetic



- * Vinyl "T" post 0.6' NW of Oneida County alum. mon.
- * Distances to bearing trees are to nail in side.
- * Sketch is not to scale



A-E 7.08(3)(i) - Certification
I, Gregory S. Maines, Professional Land Surveyor No. 2729, hereby certify that the corner location on this record was referenced by me or under my direction and control and that this U.S. Public Land Survey Monument Record is complete to the best of my knowledge and belief.
REF: 2025193

Index No.: