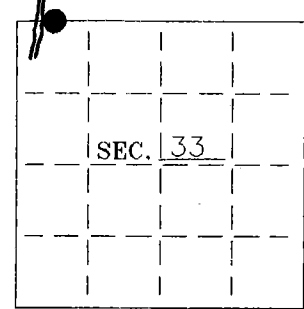


U. S. PUBLIC LAND SURVEY MONUMENT RECORD

Note: This form is intended and designed to fulfill all requirements of Wisconsin Administrative Code-Chapter A-E 7.08 U. S. Public Land Survey Monument Record (3)(a)(b)(c)(d)(e)(f)(g)(h)(i). An additional sheet may be added if necessary to conform with said requirements.

(a) CORNER LOCATION: State Plane Coordinates
 Meander corner of Sec. 28&33 X ---
 Township 36 North Y ---
 Range 06 East Datum Base ---
 Town/City Nokomis County of Oneida



(b) HISTORY OF ORIGINAL CORNER ESTABLISHMENT:

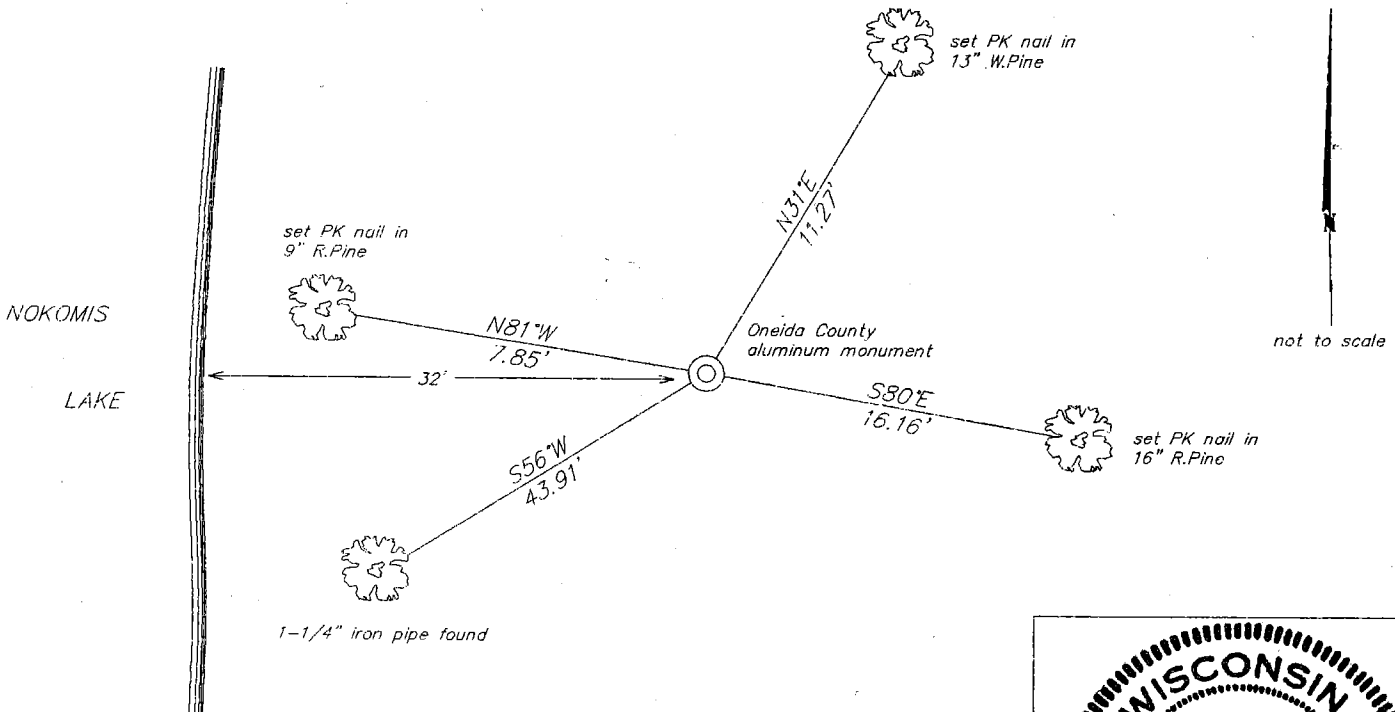
Original Surveyor: Joseph Jenkins Original B.T.'S
 Date of Survey: Commenced October, 1862 Elm 6" S42°W 50 lks
 Completed October, 1862 No other tree near.

(b)(f)(g)(h) Description of monument found at this corner and if it was accepted—state all evidence (material—testimonial—occupation—plats—records—other monuments) used as a basis for accepting. If not accepted or if nothing was found state evidence used as basis for establishing location. If reestablished through lost corner proportionate methods indicate all monuments—distances and directions used to establish. Indicate type of monument and sign post found or set.

November, 1970: Map by John H. Fisher indicates corner is marked by an iron pipe set and witnessed by an erroneous iron pipe bearing S56°17'W, 43.8 feet.

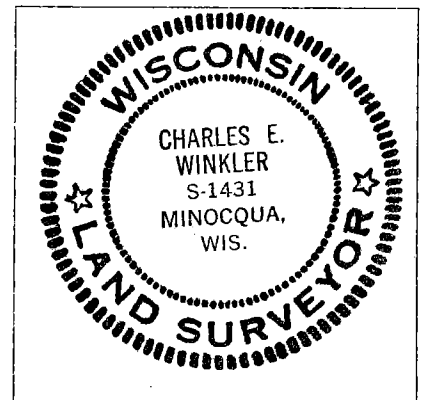
October 3, 1995: I found and accepted a 1" iron pipe witnessed by the erroneous pipe mentioned by Fisher. I replaced the pipe with a 2-1/2" dia., 30" long aluminum pipe with a 3-1/4" dia. Oneida Co. aluminum cap stamped to identify the corner location. I established accessories as shown below and set a plastic sign post North, 1 foot.

(c)(d)(e) Plan view of corner with ties to at least 4 witness monuments. If in disagreement with previously established corner—show the distances between the two corners and also indicate the ties to the disputed.



(i) I Charles E. Winkler, Registered Land Surveyor S-1431
 hereby certify that the corner location on this record was determined by me or under my direction and control and that this U.S. Public Land Survey Monument Record is correct and complete to the best of my knowledge and belief.

Charles E. Winkler 1-30-96
 Signature Foltz and Associates, Inc. Date



INDEX NO. V-9.10

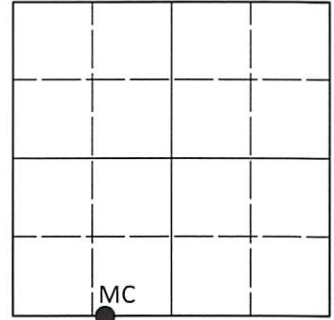
366290028

U.S. PUBLIC LAND SURVEY MONUMENT RECORD

Note: This form is intended and designed to fulfill all requirements of Wisconsin Administrative Code, Chapter A-E 7.08 U.S. Public Land Survey Monument Record (3)(a-i).

(a) CORNER LOCATION
 Meander Cor. of Secs. 28 & 33
 Township 36 North
 Range 6 East of the 4th P.M.
 Town of Nokomis
 County of Oneida

WISCRS - Oneida County
 N: 140,110.65 USft
 E: 177,594.01 USft
 Datum: NAD 83(2011) ep. 2010.00
 GNSS Method: RTN - Offset
 GNSS Control: WISCORS VRS



Sec. 28, T. 36 N., R. 6 E.

(b)(f)(g)(h) Description of monument found at this corner and if it was accepted, state all evidence (material, testimonial, occupational, plats, records, other monuments) used as a basis for accepting. If not accepted or if nothing was found, state evidence used as basis for establishing location. If re-established through lost corner proportionate methods, indicate all monuments, distances and directions used to establish. Indicate type of monument and sign post found or set.

This record is a perpetuation of the following land corner document(s):

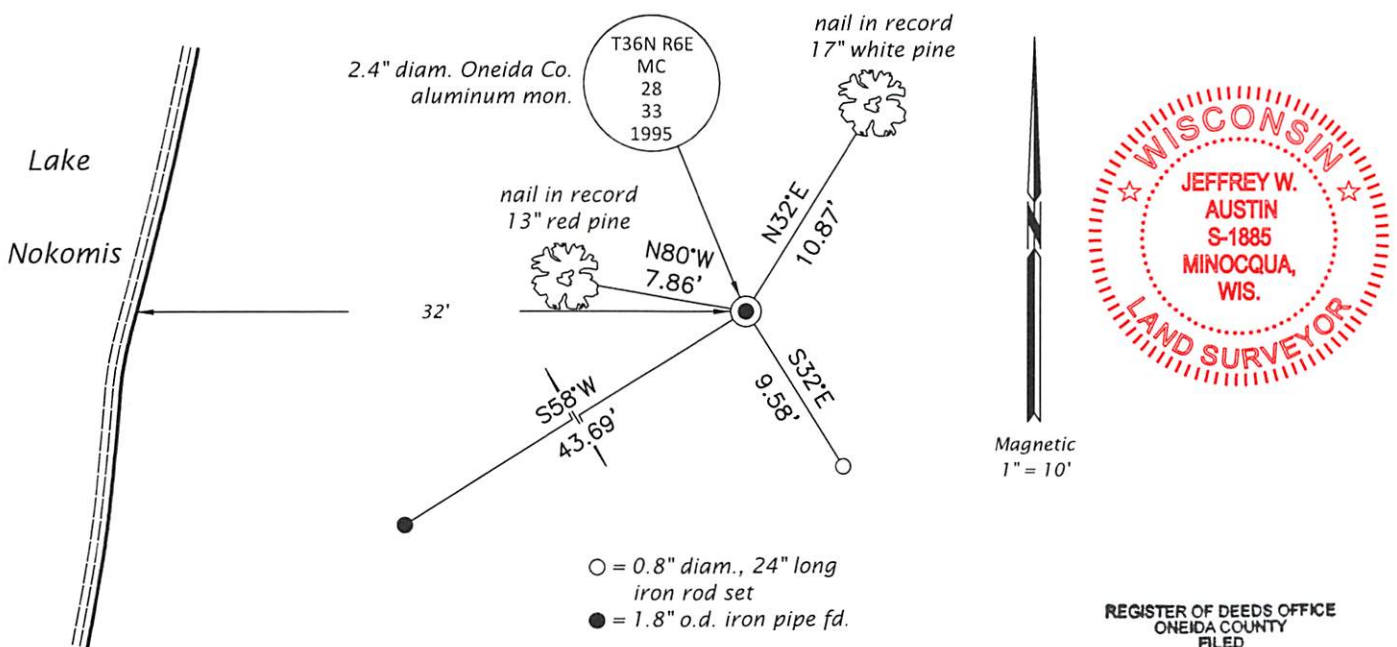
January 30, 1996: USPLS Monument Record by Charles E. Winkler, filed in Oneida County

A complete history of the corner can be found on the previous land corner document(s). I accept the record activity as a true and faithful perpetuation or reestablishment of the original corner location and further perpetuate it as described below.

July 13, 2022: I found and accepted the record monument, a 2.4" diam. aluminum pipe, firmly set, with a 3.3" diam. Oneida Co. aluminum cap projecting 2" above the ground surface. The record bearing tree at S80°E is a cut stump. I found or established accessories as indicated below. I found a white vinyl sign post bearing North, 1.0 ft.

The coordinate value shown has been determined by traversing from two or more GNSS offset points satisfying the accuracy requirements defined and qualified in the 2022 Oneida County Fee Schedule for USPLS Corners.


(c)(d)(e) Plan view of corner with ties to at least 4 witness monuments. If in disagreement with previously established corner, show the distances between the two corners and also indicate the ties to the disputed.



(i) I, Jeffrey W. Austin, Professional Land Surveyor No. S-1885, hereby certify that the corner location on this record was determined by me or under my direction and control and that this U.S. Public Land Survey Monument Record is correct and complete to the best of my knowledge and belief.

AUG 31 2022

KYLE J. FRANSON
REGISTER OF DEEDS


 Signature

AUG. 1, 2022
 Date