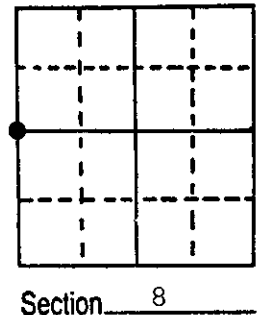
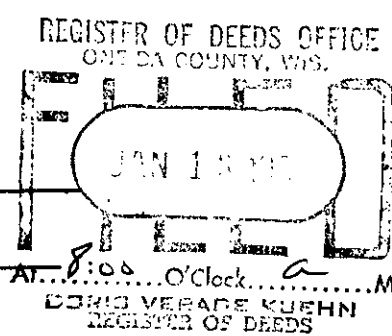


U.S. PUBLIC LAND SURVEY MONUMENT RECORD

Note: This form is intended and designed to fulfill all requirements of Wisconsin Administrative Code, Chapter A-E 5.02, U.S. Public Land Survey Monument Record (3) (a) (b) (c) (d) (e) (f) (g) (h) (i). An additional sheet may be added if necessary to conform with said requirements.

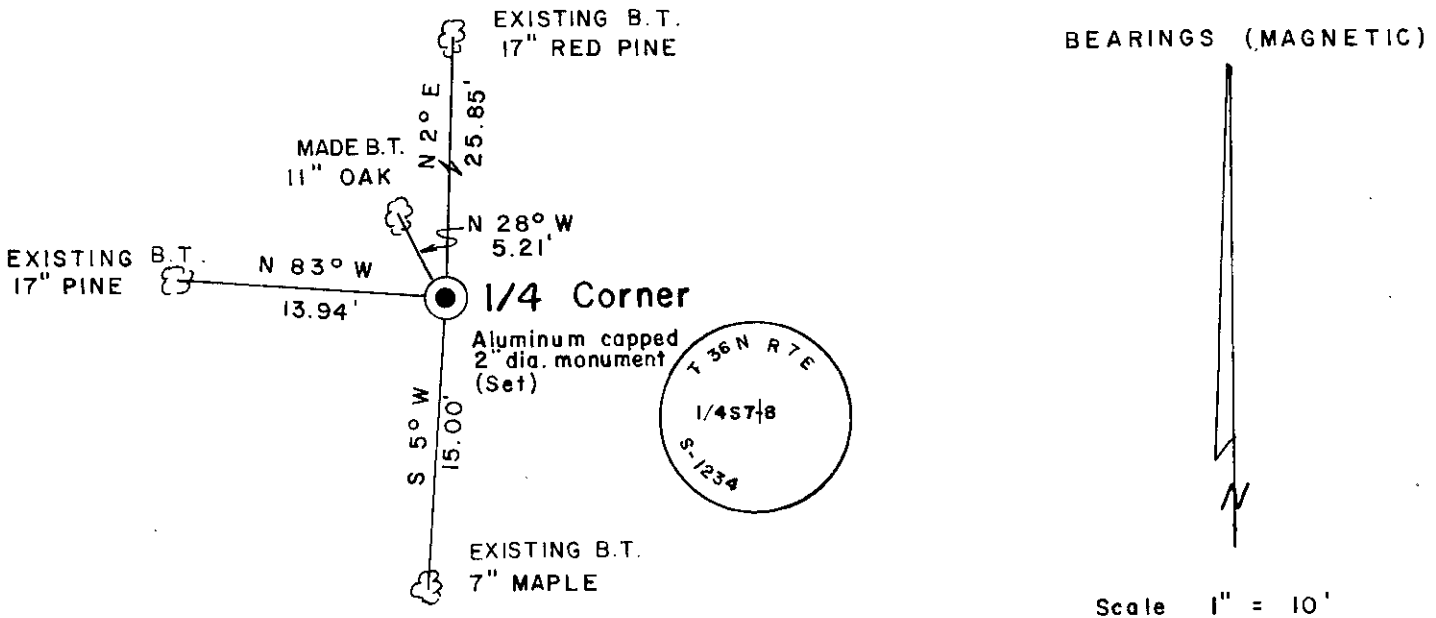
(a) Corner location: Township 36 North
 Range 7 East/West
 Town/City/Village Woodboro
 County Oneida



(b) (f) (g) (h) Description of monument found at this corner and if it was accepted, state all evidence (material, testimonial, occupational, plats, records, other monuments) used as a basis for accepting. If not accepted or if nothing was found, state evidence used as basis for establishing location. If reestablished through lost corner proportionate methods, indicate all monuments, distances and directions used to establish.

- 1862 - Joseph Jenkins, Deputy Surveyor - Set 1/4 Section post, original bearing trees: Hemlock 9" N38°E, 30 links; Hemlock 12" S55°W, 18 links.
- December 6th, 1906 - D.H. Vaughan, Oneida County Surveyor - Set 1/4 post by proration. Bearing trees: Birch 8" N54°E, 15 1/2 links; Birch 8" S41°W, 21 links.
- 1956 - Owen Illinois Survey - Set 1/4 Corner by proration between Section and witness corner. Bearing trees: Pine N85°W, 13.2 feet; Oak N82°E, 19.8 feet.
- 1987 - James Rein, RLS - Replaced found 1 1/2" dia. iron pipe with a capped 2" dia. flanged bottom aluminum monument. Set plastic post adjacent to corner monument. Existing Bearing trees: Red Pine 17" N2°E, 25.85; Red Pine 17" N83°W, 13.94 feet; 7" Maple S5°W, 15.00 feet. See detailed drawing for additional ties. Distance measurements made to aluminum nails set in center of root crown on side of tree facing corner.

(c) (d) (e) Plan view of corner with ties to at least 4 witness monuments. If in disagreement with previously established corner, show the distances between the two corners and also indicate the ties to the disputed corner.



(i) I, James D. Rein, Registered Land Surveyor No. S-1234
 (type or print name) certify that the corner location on this record was determined by me or under my direction and control and that this U.S. Public Land Survey Monument Record is correct and complete to the best of my knowledge and belief.

James D. Rein August 20th, 1987
 Signature Date



Index No. G-5

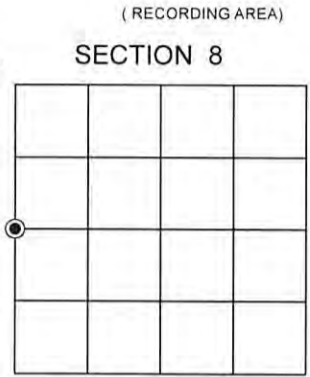
3607072000

U.S. PUBLIC LAND SURVEY MONUMENT RECORD ADDENDUM

Note: This form is intended and designed to fulfill all requirements of the Wisconsin Administrative Code, Chapter A-E 7.08 U.S. Public Land Monument Record (3)(a)(b)(c)(d)(e)(f)(g)(h)(i). An additional sheet may be added if necessary to conform with said requirements.

(a) CORNER LOCATION:
West Quarter Corner of Section 8
Township 36 North
Range 7 East
Town of Woodboro
County of Oneida

North:
East:
Datum:
GNSS Method:
GNSS Control:



SEE PREVIOUS U.S.P.L.S. MONUMENT RECORD DATED AUGUST 20, 1987

(b) HISTORY OF ORIGINAL CORNER ESTABLISHMENT

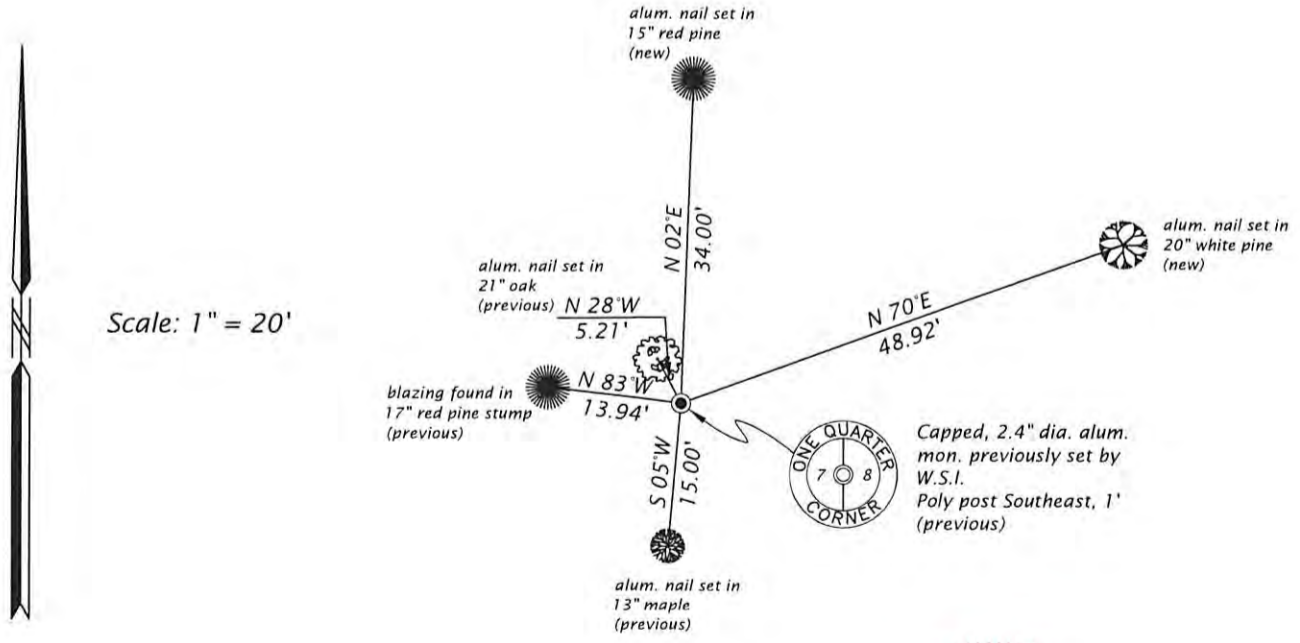
Original Surveyor:
Date of Survey: Commenced
Completed
Original B.T.'S

(f)(g)(h) DESCRIPTION OF MONUMENT FOUND AT THIS CORNER AND IF IT WAS ACCEPTED, STATE ALL EVIDENCE (MATERIAL, TESTIMONIAL, OCCUPATIONAL, PLATS, RECORD, OTHER MONUMENTS) USED AS A BASIS FOR ESTABLISHING LOCATION. IF NOT ACCEPTED OR IF NOTHING WAS FOUND, STATE EVIDENCE USED AS BASIS FOR ESTABLISHING LOCATION. IF REESTABLISHED THROUGH LOST CORNER PROPORTIONATE METHODS, INDICATE ALL MONUMENTS, DISTANCES AND DIRECTIONS USED TO ESTABLISH. INDICATE TYPE OF MONUMENT AND SIGN POST FOUND OR SET.

This is a perpetuation of a previous U.S.P.L.S. Monument Record by James D. Rein, RLS-1234, dated August 20, 1987, and filed in the office of the Oneida County Register of Deeds. A complete history of the corner can be found on the previous monument record. I accept the previous location as a true and faithful perpetuation or reestablishment of the original corner location and further perpetuate it as follows.

September 5, 2024, James D. Rein, PLS No. S-1234, we found and I accepted a perpetuation of my capped, 2.4" dia. aluminum monument. We further perpetuate it as shown in the plan. The northeasterly red pine is now disturbed. See below for 2 additional bearing trees and updated ties to the recovered references.

(c)(d)(e) PLAN VIEW OF CORNER WITH TIES TO AT LEAST 4 WITNESS MONUMENTS. IF IN DISAGREEMENT WITH PREVIOUSLY ESTABLISHED CORNER, SHOW THE DISTANCE BETWEEN THE TWO CORNERS AND ALSO INDICATE THE TIES TO THE DISPUTED CORNER.



(i) I, JAMES D. REIN, PROFESSIONAL LAND SURVEYOR NO. S-1234 HEREBY CERTIFY THAT THE CORNER LOCATION ON THIS RECORD WAS DETERMINED BY ME OR UNDER MY DIRECTION AND CONTROL AND THAT THIS U.S. PUBLIC LAND SURVEY MONUMENT RECORD IS CORRECT AND COMPLETE TO THE BEST OF MY KNOWLEDGE AND BELIEF.



SIGNATURE James D. Rein DATE 3/25/25