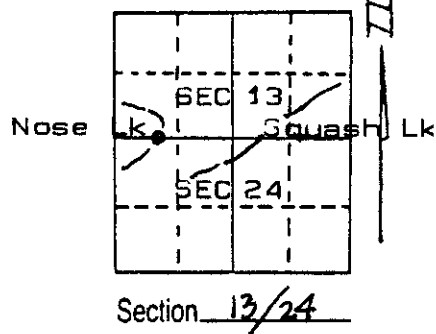


U.S. PUBLIC LAND SURVEY MONUMENT RECORD

Note: This form is intended and designed to fulfill all requirements of Wisconsin Administrative Code, Chapter A-E 7.08, U.S. Public Land Survey Monument Record (3) (a) (b) (c) (d) (e) (f) (g) (h) (i). An additional sheet may be added if necessary to conform with said requirements.

(a) Corner location: Township 36 North
 Range 7 East/West
 Town/City/Village WOODBORO
 County ONEIDA



(b) (f) (g) (h) Description of monument found at this corner and if it was accepted, state all evidence (material, testimonial, occupational, plats, records, other monuments) used as a basis for accepting. If not accepted or if nothing was found, state evidence used as basis for establishing location. If reestablished through lost corner proportionate methods, indicate all monuments, distances and directions used to establish.

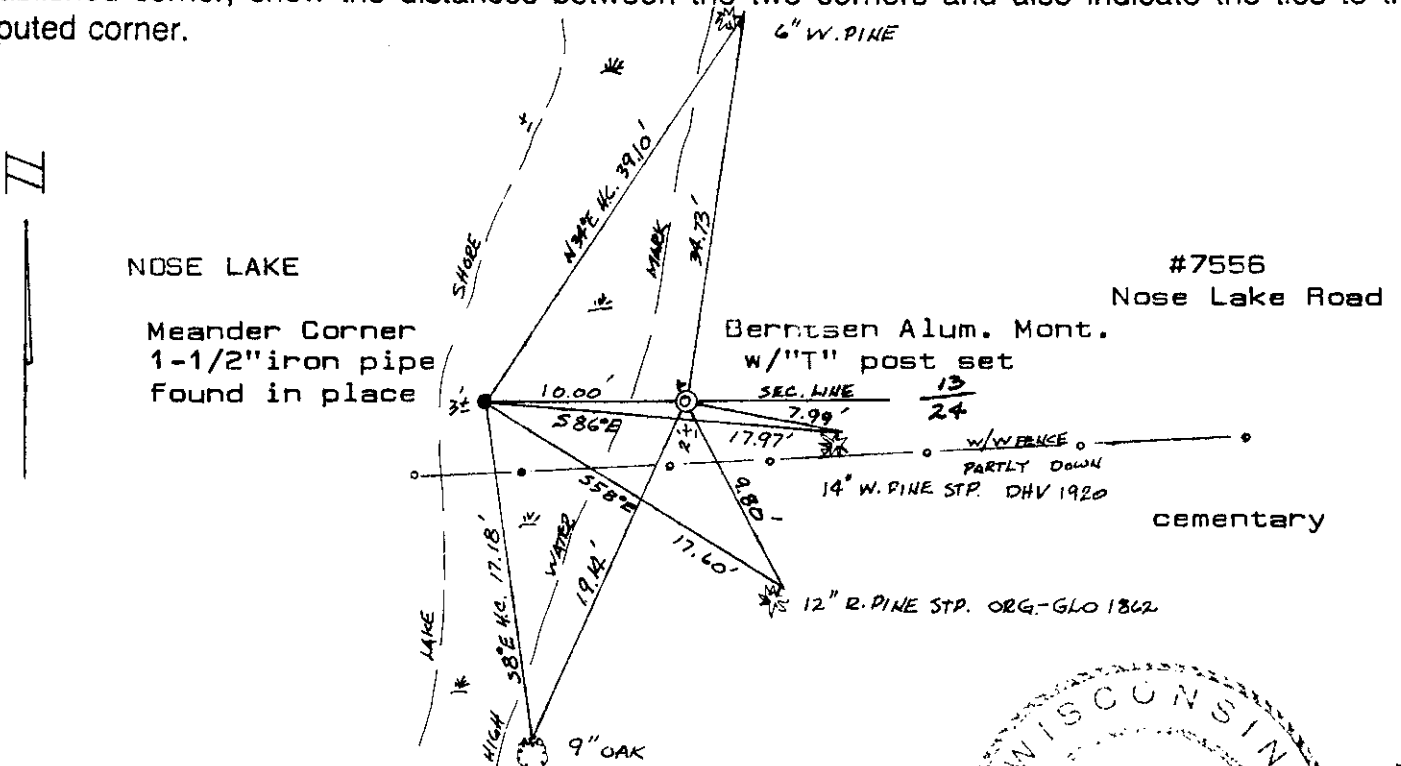
Original GLO survey by Jos.H.Jenkins, Deputy Surveyor in 1862. Set post for meander corner. Y.pine 12" S66°E, 271k. W.pine 10" N87°E, 28 lk.

D. H. Vaughan in 1920 retraced this section line, found originals & made a new B.T.stp.

F.R.Wincentzen in 1949 retraced this line & set iron pipe? at the meander corner.

I found an iron pipe at the shore with the orig.red pine B.T. and DHV's white pine stp. B.T. Set Witness Corner along the section line 10.00' east of the iron pipe with "T" plastic post adjacent and made ties: 6" white pine, N34°E, 39.10'; 9" oak S8°E, 17.18'; 12" red [Yellow] pine stp. S58°E, 17.60' [S66°E, 271ks 17.82']; 14" White pine stp. S86°E, 17.97' [DHV 1920]. Set 60d nails in all bearing trees & stumps.

(c) (d) (e) Plan view of corner with ties to at least 4 witness monuments. If in disagreement with previously established corner, show the distances between the two corners and also indicate the ties to the disputed corner.



(i) I, ROBERT H. WINAT, LAND SURVEYOR 1040
 (type or print name) certify that the corner location on this record was determined by me or under my direction and control and that this U.S. Public Land Survey Monument Record is correct and complete to the best of my knowledge and belief.

Signature Robert H. Winat Date 29 dec '01



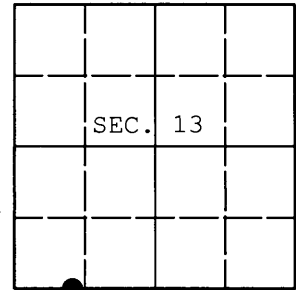
360713 0032

Index No. N21-22

U.S. PUBLIC LAND SURVEY MONUMENT RECORD

Note: This form is intended and designed to fulfill all requirements of Wisconsin Administrative Code, Chapter A-E 7.08 U.S. Public Land Survey Monument Record (3) (a) (b) (c) (d) (e) (f) (g) (h) (i). An additional sheet may be added if necessary to conform with said requirements.

(a) CORNER LOCATION: WISCORS (Oneida County)
Meander Cor. of Secs. 13 & 24 N: 150,710.211 USft
Township 36 North E: 224,482.077 USft
Range 7 East of the 4th P.M. Datum: NAD 1983(2011)
Town of Woodboro County of Oneida



(b) HISTORY OF ORIGINAL CORNER ESTABLISHMENT

Original Surveyor: Original Accessories:
Date of Survey:

(b) (f) (g) (h) Description of monument found at this corner and if it was accepted, state all evidence (material, testimonial, occupational, plats, records, other monuments) used as a basis for accepting. If not accepted or if nothing was found, state evidence used as basis for establishing location. If re-established through lost corner proportionate methods, indicate all monuments, distances and directions used to establish. Indicate type of monument and sign post found or set.

NOTE: This is a perpetuation of a previous USPLS Monument Record by Robert H. Winat, RLS dated December 29, 2001 and filed in the office of the Oneida County Register of Deeds. A complete history of the corner can be found on the previous monument record. I accept the previous location as a true and faithful perpetuation or reestablishment of the original corner location and further perpetuate it as follows.

October 31, 2013: I found and accepted Winat's monument, a 2-1/2" diam. aluminum pipe with 3-1/4" diam. Oneida Co. aluminum cap. Winat's accessories were found in substantial agreement with his previous record and were not remeasured as the sole purpose of this work is to report the coordinates of the corner point.

The coordinates shown were derived from offset RTN GPS observations referenced to the WISCORS network.

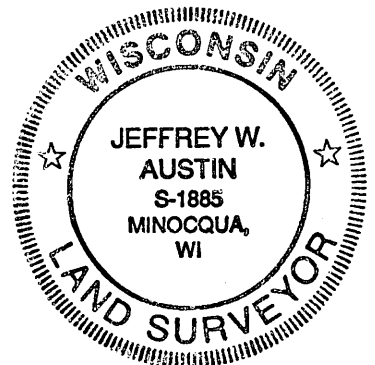
(c) (d) (e) Plan view of corner with ties to at least 4 witness monuments. If in disagreement with previously established corner, show the distances between the two corners and also indicate the ties to the disputed.

REGISTER OF DEEDS OFFICE
ONEIDA COUNTY
FILED

DEC 23 2013

AT O'CLOCK M
KYLE J. FRANSON
REGISTER OF DEEDS

(i) I, Jeffrey W. Austin, Registered Land Surveyor No. S-1885, hereby certify that the corner location on this record was determined by me or under my direction and control and that this U.S. Public Land Survey Monument Record is correct and complete to the best of my knowledge and belief.



Signature

[Handwritten signature of Jeffrey W. Austin]

Date

DEC 9, 2013

3607130032 (INDEX NO. N-21,22)

US PUBLIC LAND SURVEY MONUMENT RECORD

Per Wis. Admin. Code § A-E 7.08, a U.S. public land survey monument record shall be prepared and filed with the county survey records as part of any land survey within 60 days of setting or accepting the corner, which includes or requires the perpetuation, restoration, or use of a U.S. public land survey corner and when any of the situations in Wis. Admin. Code § A-E 7.08(1)(a), (b) or (c) arise.

3(a) Corner Identification:

Set 2 1/2" x 30
aluminum monument
Meander Corner
Section 13
Township 36 North
Range 7 East
4th Principal Meridian
Town of Woodboro
Oneida Co., WI

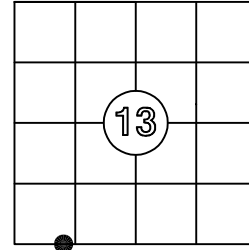
Observed Coordinates:

Set aluminum monument
N: 150710.38
E: 224472.02
Datum: NAD83(2011)
GNSS Control: WISCRS
NETWORK
GNSS Method: RTK-Direct
Verification Method: 1, 2

Observed Coordinates:

Found aluminum
monument - WCMC
N: 150710.35 (Δ 0.149')
E: 224482.01 (Δ 0.067')
Published Coordinates:
N: 150710.211
E: 224482.077

CORNER ID:
3607130033



Establishment of Original Corner

Corner Set: Wood Post
Original Surveyor: Jos. H. Jenkins
Date of Survey: September, 1862
Yellow pine 12", S 66° E, 27 lks
White pine 10", N 87° E, 28 lks

The coordinate value has been verified by at least one of the following methods:

1. Comparison to a previously determined GNSS determined published value;
2. The value is the average of two or more GNSS observations at markedly different times;
3. One or more distances were measured to the corner from offset GNSS observed locations, set and observed per No. 2 methods.

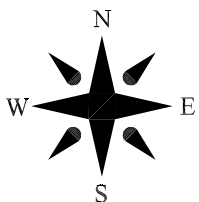
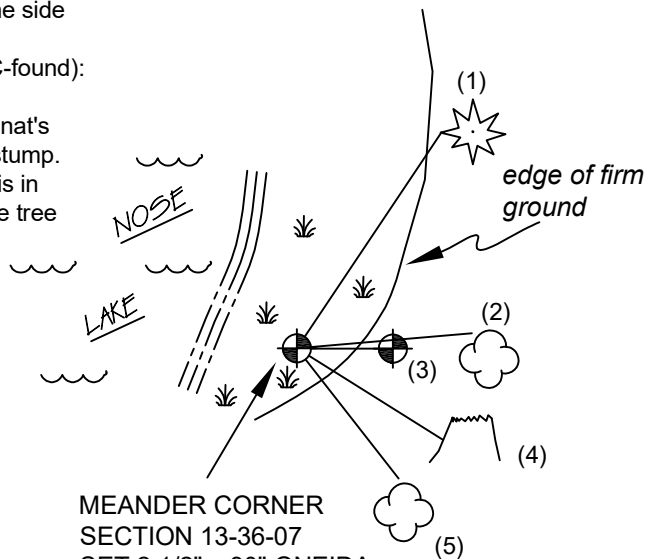
3(b)(c)(d)(f)(g)(h)

This is a continuation of a previous USPLSS Monument Record by Surveyor Robert Winat, S-1040 (2001) and addendum record by Jeff Austin, S-1885. See Winat's record for additional history on this corner.

- 5/15/1972 - Gerald Inman, S-891, finds a 2" iron pipe.
- 7/20/1993 - Todd Loftus, S-1523, finds a "subdivision mon found"
- 12/29/2001 - Robert Winat's monument record states he found a 1 1/2" iron pipe, in place and accepted it as the meander corner. He set an aluminum monument 10.00' east, on the section line, as a WCMC.
- 12/9/2013 - Jeff Austin, S-1885, establishes Oneida County coordinates on the WCMC
- 6/29/2025 - I, Anthony Jones, S-2508, found the 1 1/2" iron pipe lying flat on the ground in the vegetated lake bed of Nose Lake, 6' ± west of firm ground and 9'± east of the edge of the water at the time of this record. Using two of Winat's witnesses, the aluminum monument WCMC, and the oak at S 38° E, I set a 2 1/2" x 30" Oneida County aluminum monument, flush with the ground and stamped to show the location. All witnesses are shown below. I left the iron pipe on the ground near the monument. There is an old wire fence on the ground, running east along the south line of Section 13, marking the north line of the Woodboro cemetery. Vaughn's stump is no longer usable. It is loose and tipped toward the lake.

WITNESS MONUMENT TIES

1. 15" white pine (found): N 34° E, 38.85'. Winat's nail is gone, so I set a new one in the side of the tree
2. 12" oak (made): N 85° E, 18.28'. Set nail in the side of the tree
3. Oneida County aluminum monument (WCMC-found): S 89°49'44" E, 10.00'
4. Pine stump (OBT-found): S 58° E, 17.88'. Winat's nail was loose, so I reset it in the side of the stump.
5. 12" oak (found): S 38° E, 17.18'. Winat's nail is in good condition. It was driven vertically into the tree root.



Not to scale

Bearings magnetic

3(i) I, Anthony R. Jones, Wisconsin Professional Land Surveyor No S-2508, hereby certify that the corner location shown on this record was determined by me, and that this U.S. Public Land Survey Monument Record is correct and complete to the best of my knowledge and belief.

