



# ONEIDA COUNTY U.S. PUBLIC LAND SURVEY MONUMENT LOCATION RECORD

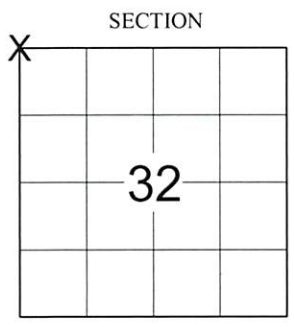
Oneida County  
Land Information Office  
Filed  
12/2/2024

SECTION 32  
TOWNSHIP 36 N  
RANGE 7 E

FOUND   
SET   
RESET   
RE-TIED   
 LANDMARK       BENCHMARK \_\_\_\_\_

WOODBORO  
CITY, VILLAGE, TOWN

CORNER IDENTITY: NORTHWEST COR. SEC. 32 - ONEIDA COUNTY MONUMENT



ONEIDA COUNTY COORDINATE: N: 140069.194  
E: 202587.720

ELEVATION-(FEET): \_\_\_\_\_ DATUM: NAD 83 (2011)

WEATHER: SUNNY

DATE OF SURVEY: 10/10/2024 TEMPERATURE: 57 °F

SURVEY PARTY: CHRIS FIERI / CALEB BILDA

## BASIS FOR MONUMENT LOCATION:

(DESCRIBE METHOD OF SURVEY AND CORNER AUTHENTICATION)

November 1862 - Joseph H. Jenkins established the corner and set a wood post with three bearing trees: 10" Black Pine, S76°W, 36 links 10" Black Pine, N64°W, 34 links 10" W. Pine, S75°W, 36 links

1900 - Dorr restored the corner and made a new bearing tree.

June 28, 1937 - Maine found Dorr's bearing tree cut off. He set an Oneida County Monument below road surface and made new bearing trees.

July 26, 1989 - Milo E. Stefan found the bottom of an Oneida County Monument 18" below the road surface and a location poster West. He found no trace of bearing trees. He placed a new Oneida County Monument 6" below the road surface, made new bearing trees and set a plastic sign post.

October 10, 2024 - We searched for the corner and recovered the Oneida County Monument of record 6" below the road surface. One bearing tree from the previous tiesheet remained. We set out four iron pipe witness monuments to perpetuate the corner location as shown below.



CERTIFIED CORRECT:

*Christopher L. Fieri*

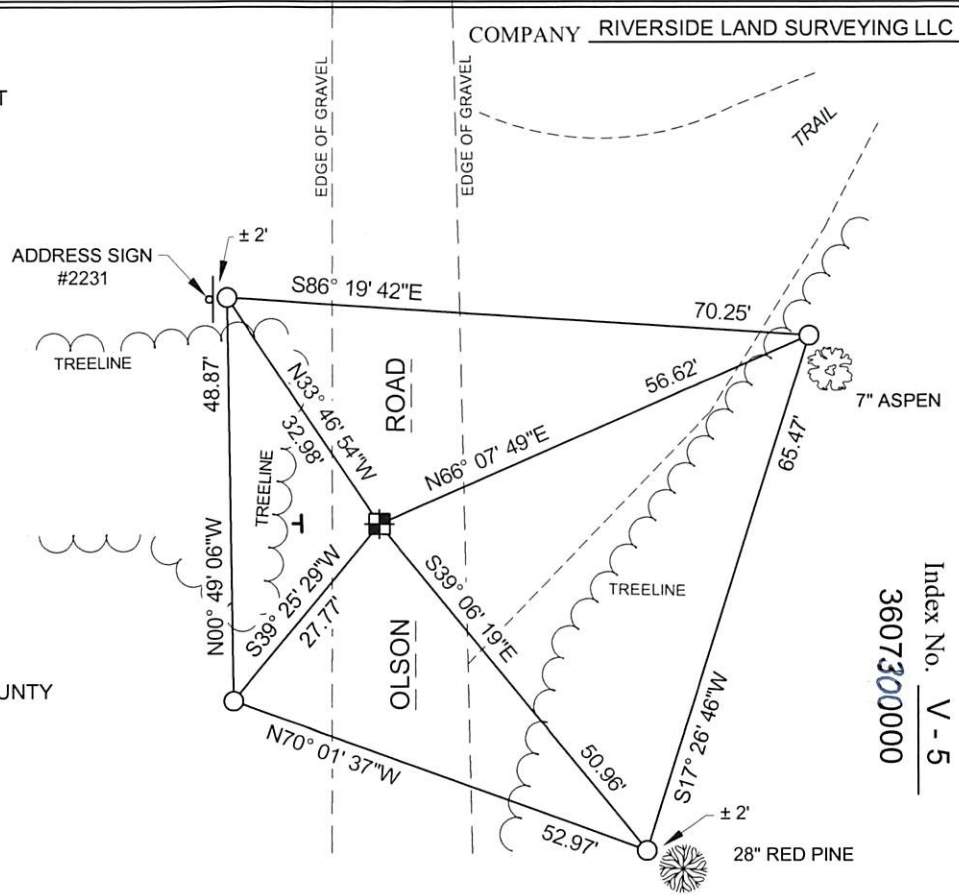
CHRISTOPHER L. FIERI S-2954

Registered Land Surveyor

DATE: 10-29-24

## TIE SKETCH:

- FOUND ONEIDA COUNTY MONUMENT
- SET 1-1/4" O.D. x 24" IRON PIPE
- SIGN
- FOUND VINYL "T" POST



BEARINGS ARE BASED ON THE ONEIDA COUNTY COORDINATE SYSTEM NAD 83 (2011) AND REFERENCED AS SHOWN

THIS DRAWING IS NOT TO SCALE

COMPANY RIVERSIDE LAND SURVEYING LLC

Index No. V - 5  
3607300000