

U.S. PUBLIC LAND SURVEY MONUMENT RECORD

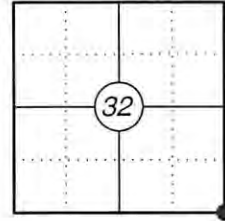
This form is intended and designed to fulfill all requirements of Wisconsin Administrative Code, Chapter A-E 7.08 U.S. Public Land Survey Monument Record (3) (a)(b)(c)(d)(e)(f)(g)(h)(i). An additional sheet may be added if necessary to confirm with said requirements.

Oneida County
Land Information Office
Filed
4/13/2026

(a) Corner Location:

SE Corner Section 32
Township 36 North
Range 07 East
Town of Woodboro
County of Oneida

Corner ID: 3607320000



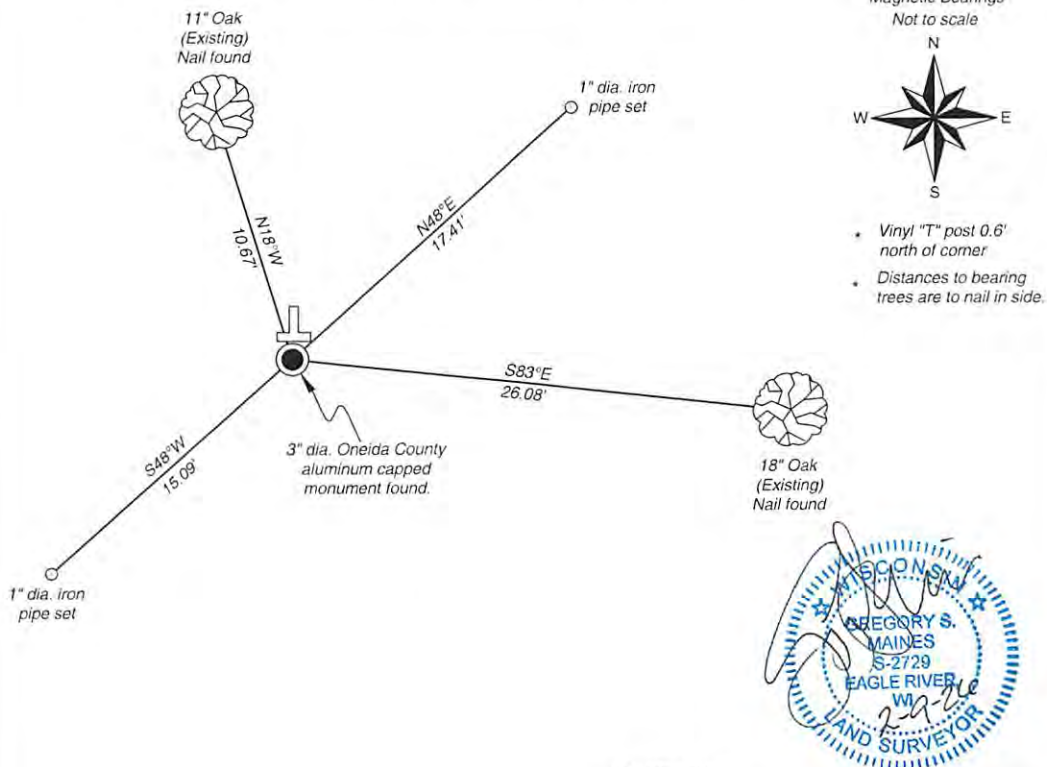
(b) History of Original Corner:

For corner history, see previous U.S. Public Land Survey Monument Record by Milo E. Stefan, dated August 8, 1989.

(f)(g)(h) Description of monument found at this corner and if it was accepted, state all evidence (material, testimonial, occupational, plats, records, other monuments) used as a basis for establishing location. If reestablishing through lost corner proportionate methods, indicate all monuments, distances, and directions used to establish. Indicate type of monument and sign post found or set.

09/18/2024 - I found and accepted a 3" dia. Oneida County aluminum capped monument stamped to identify the corner along with two existing bearing trees. I set two iron pipes as reference monuments to witness the corner as shown below.

(c)(d)(e) Plan view of corner with ties to at least four witnesses. If in disagreement with previously established corner, show the distances between the two corners and also indicate the tie to the disputed corner.



Certification

I, Gregory S. Maines, Professional Land Surveyor No. 2729, hereby certify that the corner location on this record was referenced by me or under my direction and control and that this U.S. Public Land Survey Monument Record is complete to the best of my knowledge and belief. REF: 2024292

Index No.: