

CERTIFIED LAND CORNER RESTORATION

History of original corner establishment:

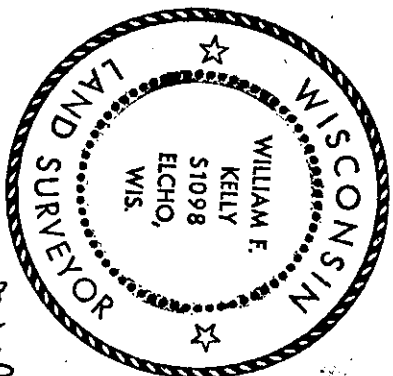
State of Wisconsin }
County of LINCOLN } ss.

I WILLIAM F. KELLY do hereby
certify that on the 29th day
of DECEMBER, 1924, I found
evidence of the SECTION
corner of SECTIONS 33, 34, 4, 3,
Township 35 North, Range
8 EAST, Fourth, Principal Meridian,
as described hereon; and that from this evidence
I established a new monument and accessories
as described hereon to perpetuate the original
location of this corner.

Resident witnesses:

Description of corner evidence found:

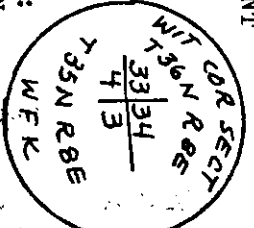
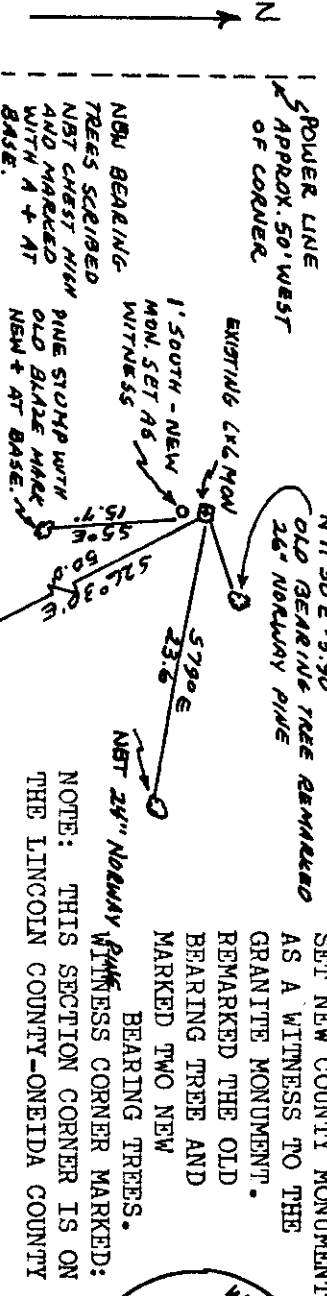
LOCATED 6" x 6" GRANITE MONUMENT MARKED $\frac{33}{4} \frac{34}{3}$. ALSO FOUND THE STUMP OF A PINE TREE
WITH BLAZE MARK AND AN OLD BEARING TREE WITH BLAZE MARKS. 90% GROWN OVER. MONUMENT SET IN
GROUND WITH STONES PLACED AROUND IT.



William F. Kelly

Index No. Z-13
5C Cor. 33-36-8
From Lincoln City Files

Description of monument and accessories I established to perpetuate the original location of this corner.



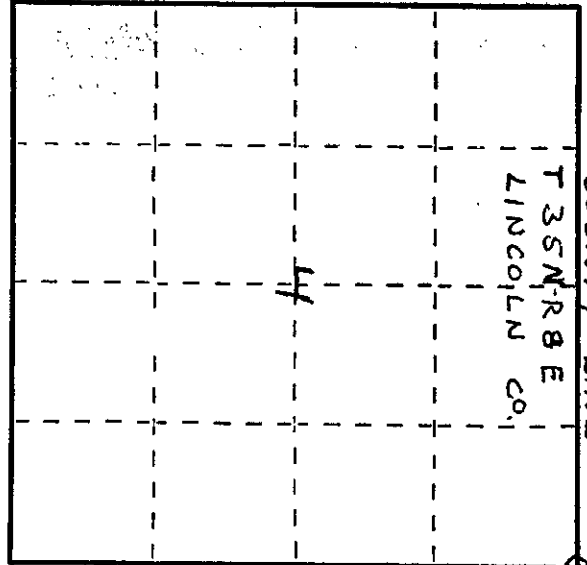
Dated at ELCHO, Wis., this 29th day of DECEMBER, 1924

Signature *William F. Kelly* Title REGISTERED LAND SURVEYOR Registration No. S 1098
(County Surveyor, Registered and Surveyor, or other duly authorized official)

Office of Register of Deeds, County of _____, I hereby certify that the within
instrument was filed in this office for record on the _____ day of _____, 19____
at _____ o'clock _____ M.

(Register of Deeds)

By _____ Deputy



○ = Corner monument restored.

3608330000

U.S. PUBLIC LAND SURVEY MONUMENT RECORD

NOTE: THIS FORM IS INTENDED AND DESIGNED TO FULFILL ALL REQUIREMENTS OF WISCONSIN ADMINISTRATIVE CODE, CHAPTER A-E 7.08, U.S. PUBLIC LAND SURVEY MONUMENT RECORD (3)(a)(b)(c)(d)(e)(f)(g)(h)(i). ADDITIONAL SHEETS MAY BE NECESSARY TO CONFORM TO SAID REQUIREMENTS.

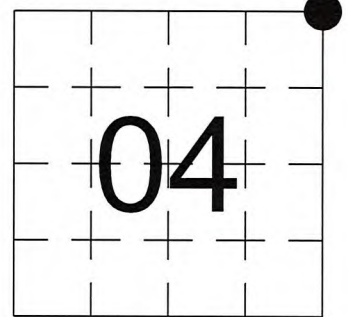
T 35 N, R 8 E

(a) CORNER LOCATION:

NORTHEAST CORNER, SECTION 4
TOWNSHIP 35 NORTH
RANGE 8 EAST
TOWN OF HARRISON
LINCOLN COUNTY
WISCONSIN

(b) HISTORY OF ORIGINAL CORNER:

ORIGINAL SURVEYOR: See Previous Tie Sheet
COMMENCING DATE:
COMPLETION DATE:
ORIGINAL BEARING TREES:



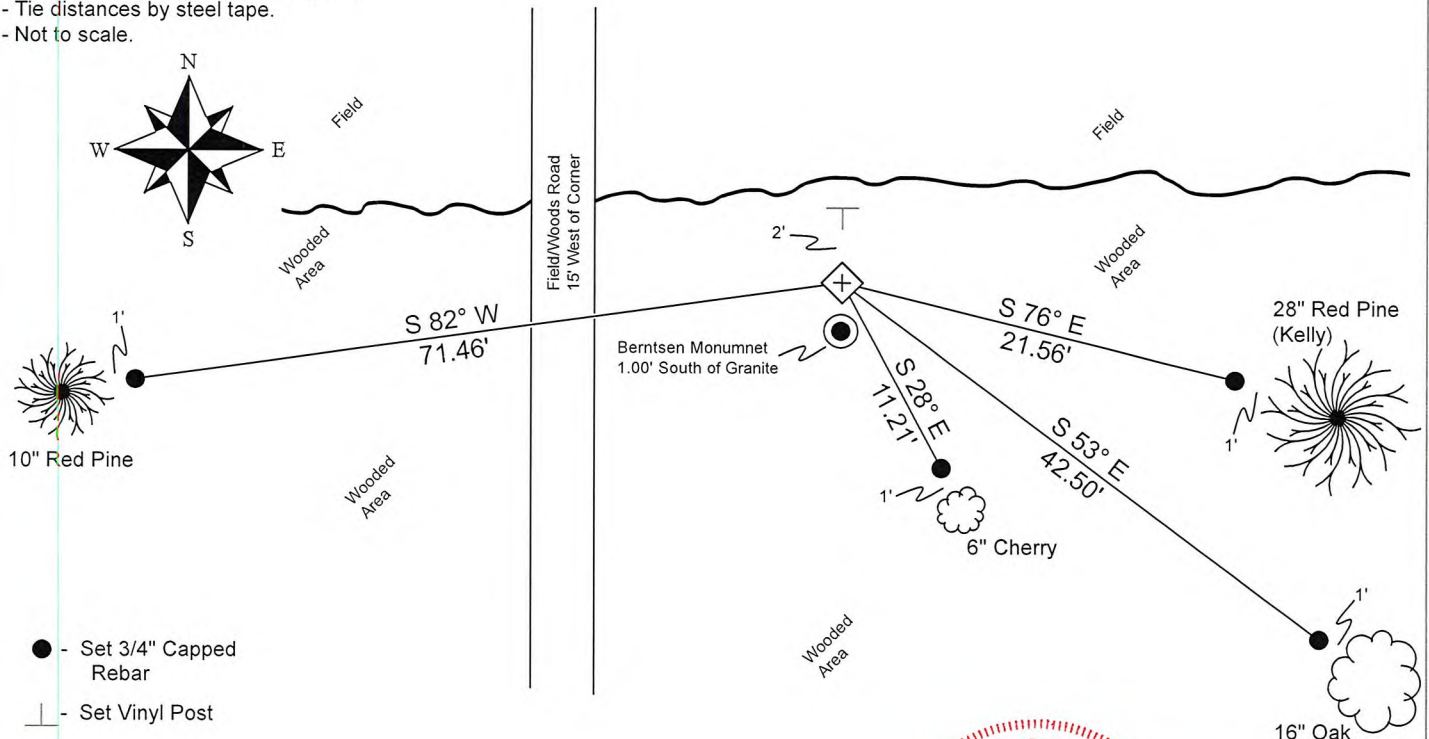
(f)(g)(h) DESCRIPTION OF MONUMENT FOUND AT THIS CORNER AND IF IT WAS ACCEPTED. STATE ALL EVIDENCE (MATERIAL, TESTIMONIAL, OCCUPATIONAL, PLATS, RECORDS, OTHER MONUMENTS) USED AS A BASIS FOR ESTABLISHING LOCATION. IF RE-ESTABLISHING THROUGH LOST CORNER PROPORTIONATE METHODS, INDICATE ALL MONUMENTS, DISTANCES, AND DIRECTIONS USED TO ESTABLISH. INDICATE TYPE OF MONUMENTS FOUND OR SET.

12/29/1974, William Kelly found a 6" X 6" Granite Monument.

08/30/2024, I, Anthony R. Dallman, PLS-2405, found a 6" X 6" Granite Monument, up 1", and all four of Kelly's BTs. I accepted this location and set witness monuments, as shown in the sketch below, to further perpetuate the corner location.

(c)(d)(e) PLAN VIEW OF THE CORNER WITH TIES TO AT LEAST FOUR WITNESSES. IF IN DISAGREEMENT WITH PREVIOUSLY ESTABLISHED CORNER, SHOW THE DISTANCES BETWEEN THE TWO CORNERS AND ALSO THE TIES TO THE DISPUTED CORNER.

- Tie bearings by hand-held compass.
- Tie distances by steel tape.
- Not to scale.



I, ANTHONY R. DALLMAN, WISCONSIN PROFESSIONAL LAND SURVEYOR, S-2405, HEREBY CERTIFY THAT THE CORNER LOCATION ON THIS RECORD WAS REFERENCED BY ME OR UNDER MY DIRECTION AND CONTROL AND THAT THIS U.S. PUBLIC LAND SURVEY MONUMENT RECORD IS COMPLETE TO THE BEST OF MY KNOWLEDGE AND BELIEF.

Anthony R. Dallman 10/14/24
ANTHONY R. DALLMAN, PLS S-2405



INDEX NO. A-13

43608330000_Mon-N

