

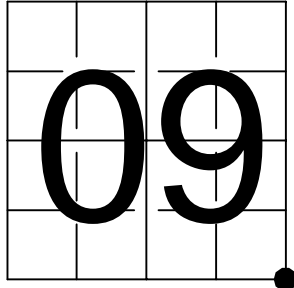


# U. S. PUBLIC LAND SURVEY MONUMENT RECORD

NOTE: This form is intended and designed to fulfill all requirements of Wisconsin Administrative Code, Chapter A-E 7.08 U.S. Public Land Survey Monument Record (3) (a-i)

A-E 7.08(3)(a) Identity of corner:  
Southeast Corner Section 09,  
Township 36 North, Range 09 East  
of the Fourth Principal Meridian,  
Town of Pelican, Oneida County,  
Wisconsin

WISCRS - ONEIDA COUNTY  
N: 156,223.330 USft (156,223.443)  
E: 275,963.315 USft (275,963.229)  
Datum: NAD83 (2011)  
GNSS Method RTK  
GNSS Control WISCORS VRS



The coordinate value shown has been verified by the average of two or more GPS observations at a markedly different time. Coordinates shown in parenthesis are previously published values.

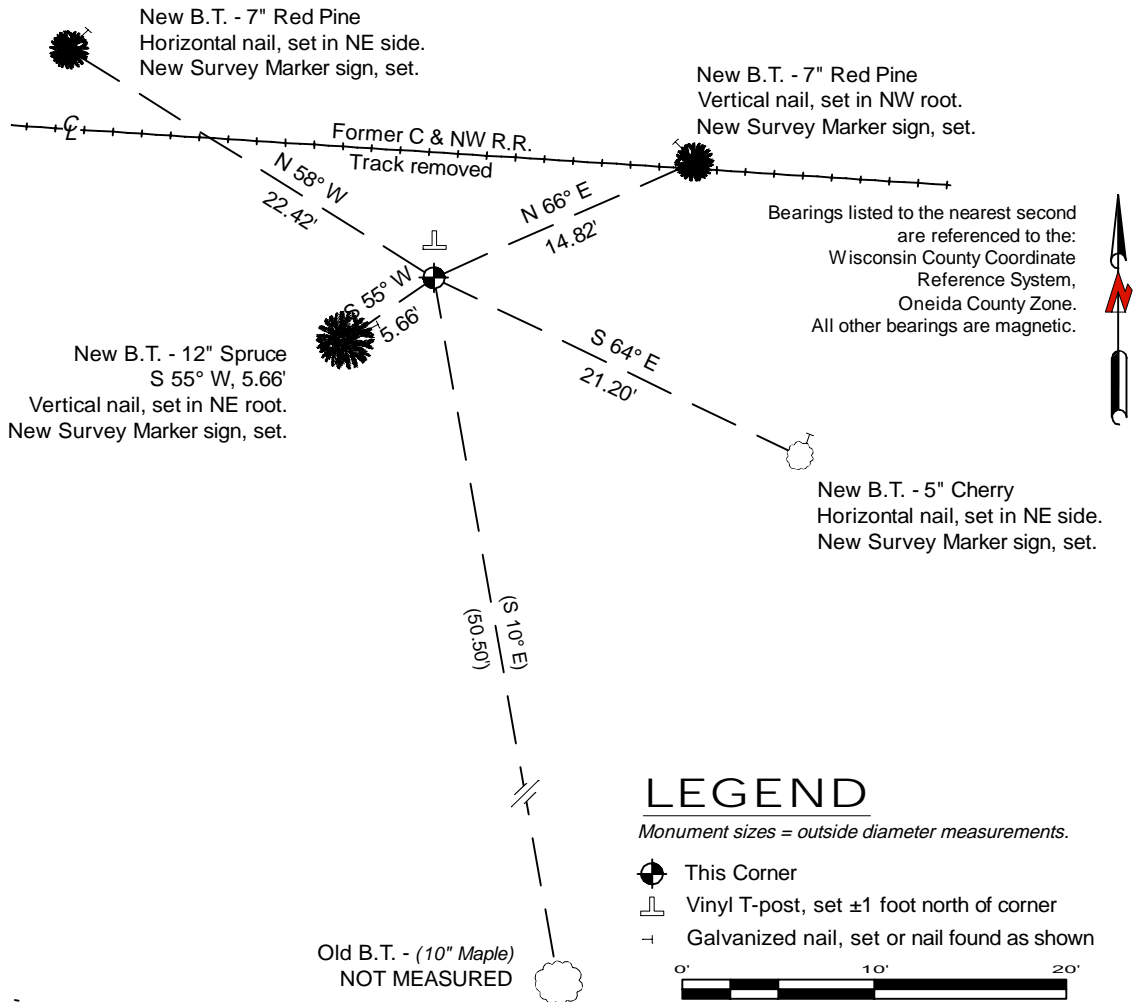
A-E 7.08(3)(b) Original Surveyor: William E. Daugherty - July 30, 1863 to August 11, 1863  
Spruce 8 - S 23° W, 14 Links, Aspen 8 - S 49° E, 17 Links,

See previous U.S. Public Land Survey Monument Record - J-13- March 11, 1993 - Surveyor 1182 - William E. Bandow - THENCE:

- April 22, 1994 - Surveyor 1182 - William E. Bandow - indicates this position as "found OCM" on county record Map #C1059.
- March 16, 1995 - Surveyor 1182 - William E. Bandow - indicates this position as "found Oneida County monument" on county record Map #C1126 & C1149.
- March 13, 2007 - Surveyor 2148 - Russell F. Brown - indicates this position as "found Oneida County monument" on county record Map #B6557.
- August 26 & 31, 2015 - Surveyor 2731 - Jon W. Bandow - indicates this position as "found Oneida County monument" on county record Map #A3059.

September 20, 2024 - I found an Oneida County aluminum pipe monument with a 3.25" diameter aluminum cap stamped to identify the corner location. The monument is ±6 feet south of the centerline of the former C & NW Railroad grade and is flush with grade. I also found 1 of Bandow's bearing trees alive and good condition. I established 4 new reference monuments as shown below.

A-E 7.08(3)(c)(d)  
Plan view of corner with references to at least 4 witness monuments.



- A-E 7.08(3)(e) 1863 Surveyor set a post, 1992 Surveyor found an iron pipe and replaced it with a Oneida County monument, I found an Oneida County aluminum pipe monument with a 3.25" diameter aluminum cap stamped to identify the corner location in 2024.
- A-E 7.08(3)(f) I accept this monument in good faith as a FOUND PERPETUATED LOCATION of the corner.
- A-E 7.08(3)(g)(h) This corner was not determined through lost-corner-proportionate methods.

A-E 7.08(3)(i) I, Jeffrey L. DeMuth, Professional Land Surveyor No. S-2656, hereby certify that the corner location on this record was determined by me or under my direction and control, and that this U.S. Public Land Survey Monument Record is correct and complete to the best of my knowledge, and belief.



SIGNATURE

January 2, 2025

DATE

43609090000