

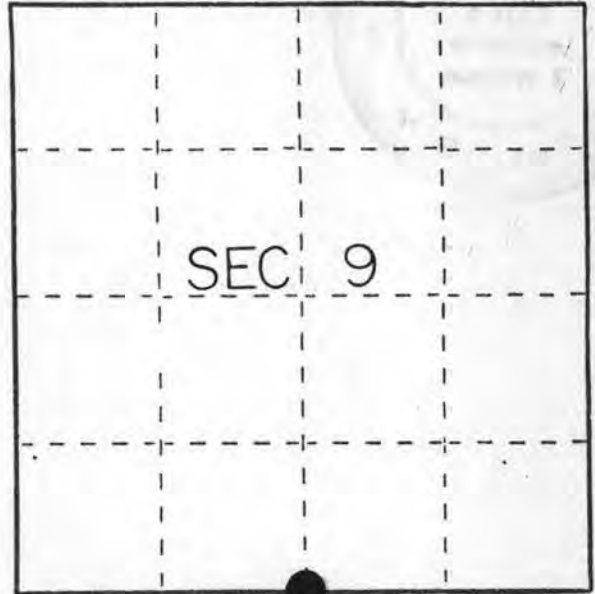
U. S. PUBLIC LAND SURVEY MONUMENT RECORD

INSTRUCTIONS: This record shall show the location of the corner and shall include all of the following nine elements (a through i).

- (a) Identify the corner by reference to the U.S. public land survey system.

● = Corner monument restored.

SOUTH $\frac{1}{4}$ CORNER, SECTION 9,
T36N, R9E

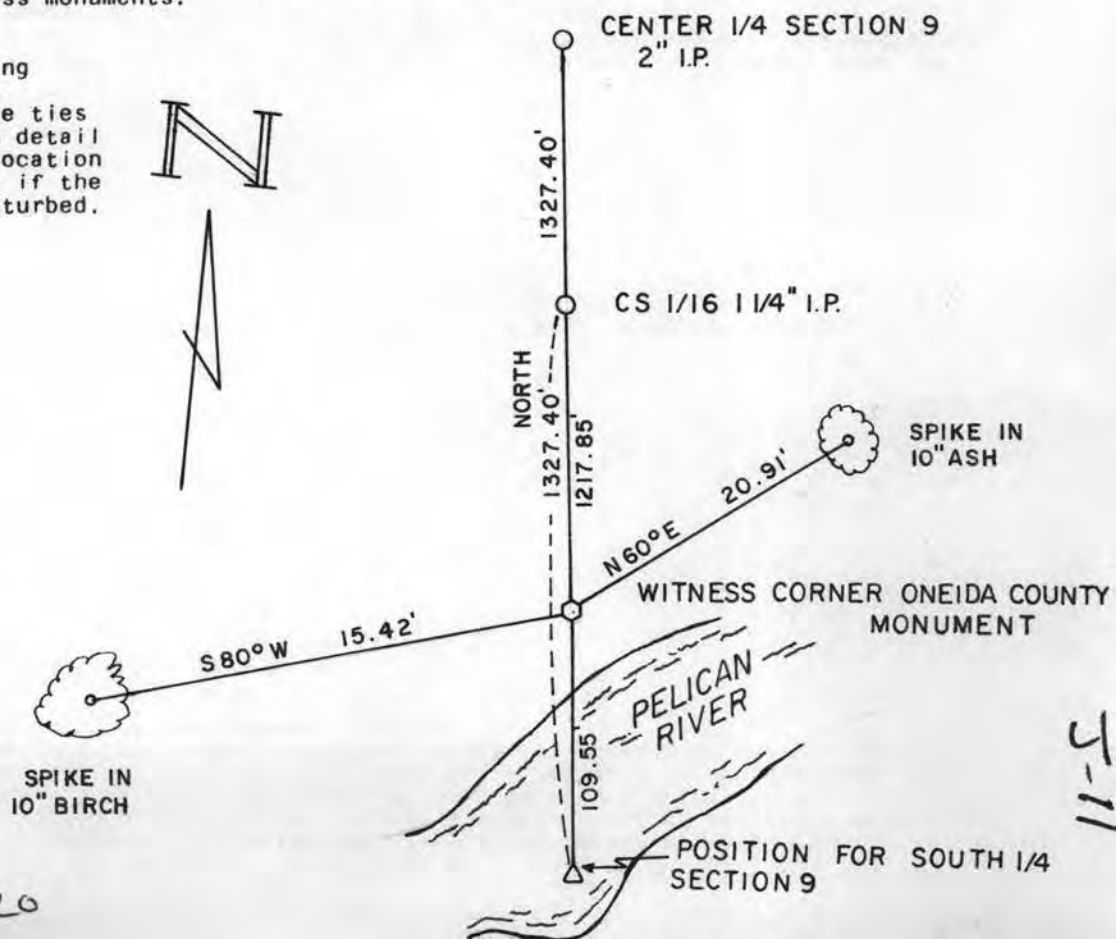


- (b) Describe any record evidence, monument evidence, occupational evidence, testimonial evidence or any other material evidence you considered, and whether the monument was found or placed.

Corner set by Wm. Daugherty in 1863. West between 9 & 16 40.00 set post on left bank river. BT's W Pine 15" S28W 7lks, W Pine 8" N73E 16lks. D.H. Vaughan at corner in 1898 & 1900. He found stumps of original trees. Ran north to center 40.13 and set 1/16 @ 20.06 north of $\frac{1}{4}$ corner. I found I.P. at center and at 1327.40' south of center found I.P. I set the $\frac{1}{4}$ corner position on the line extended 1327.40'. Corner falls in Pelican River. I set an Oneida County Monument at 109.55' north of $\frac{1}{4}$ corner position.

- (c) In the plan view drawing below, provide reference ties to at least 4 witness monuments, or, if the location is within a municipality, to at least 2 witness monuments. (Witness monuments shall be made of concrete, natural stone, iron or other equally durable material.) Describe witness monuments.

- (d) Show a plan view drawing depicting the relevant monuments and reference ties which is sufficient in detail to enable accurate relocation of the corner monument if the corner monument is disturbed. Indicate north.



3609090020

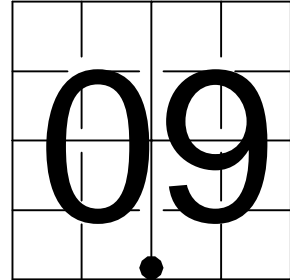
11-5

U. S. PUBLIC LAND SURVEY MONUMENT RECORD

NOTE: This form is intended and designed to fulfill all requirements of Wisconsin Administrative Code, Chapter A-E 7.08 U.S. Public Land Survey Monument Record (3) (a-i)

A-E 7.08(3)(a) Identity of corner:
WITNESS to the South 1/4 Corner Section 09,
Township 36 North, Range 09 East
of the Fourth Principal Meridian,
Town of Pelican, Oneida County,
Wisconsin

WISCORS - ONEIDA COUNTY
N: 156,530.504 USft (XXX,XXX.XXX)
E: 273,190.232 USft (XXX,XXX.XXX)
Datum: NAD83 (2011)
GNSS Method RTK
GNSS Control WISCORS VRS



The coordinate value shown are the measured Witness Monument, and have been verified by the average of two or more GPS observations at a markedly different time. Coordinates shown in parenthesis are previously published values.

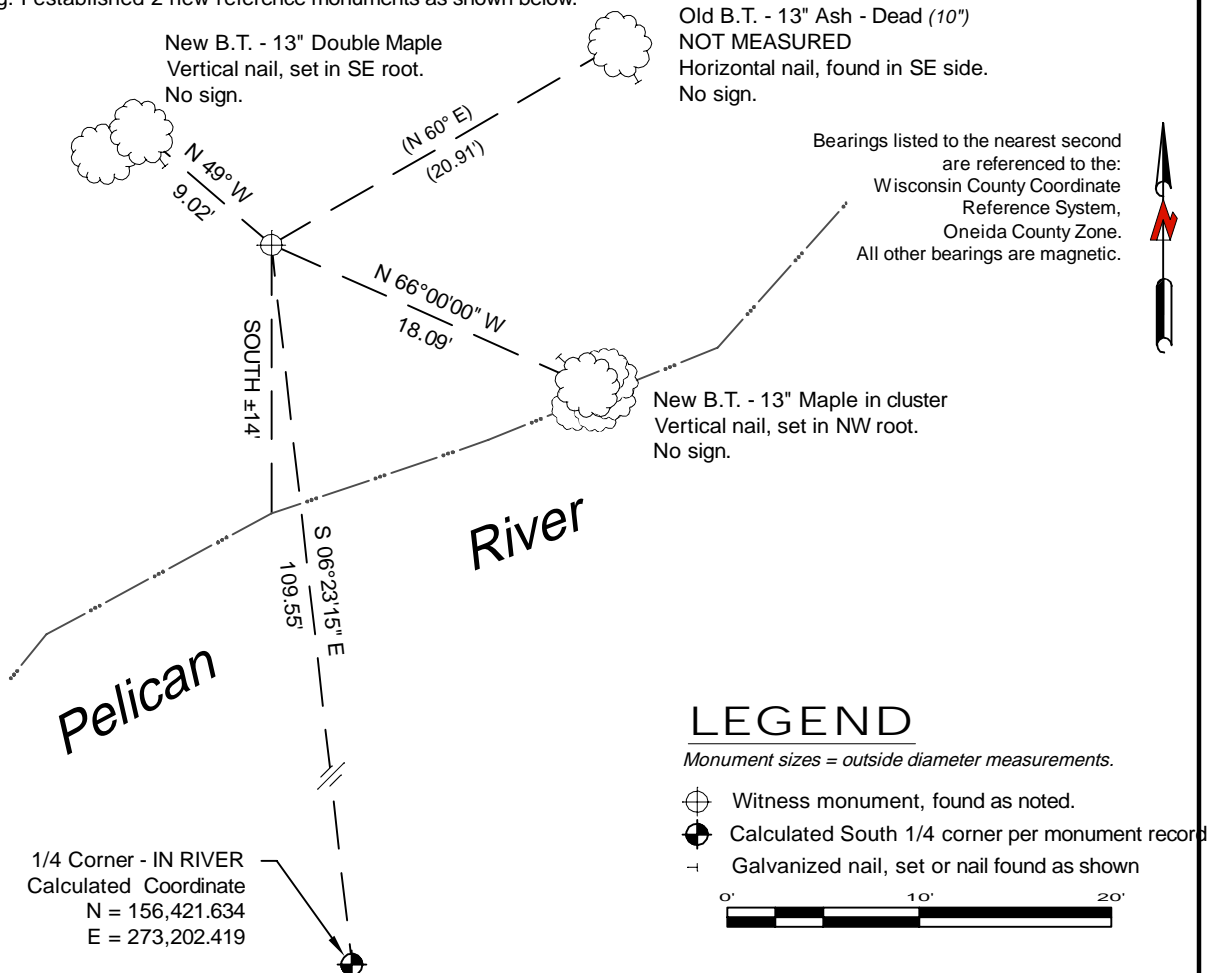
A-E 7.08(3)(b) Original Surveyor: William E. Daugherty - July 30, 1863 to August 11, 1863
"Set quarter section post on left bank of Pelican River"
White Pine 15 - S 28° W, 7 Links, White Pine 8 - N 73° E, 16 Links,

See previous U.S. Public Land Survey Monument Record - J-11 - February 22, 1984 - Surveyor 1182 - William E. Bandow - THENCE:

- June 8, 1992 - Surveyor 1182 - William E. Bandow - indicates this position as "N 1/4 Sec 16 in river" on county record Map #B2466.
- April 10, 1995 - Surveyor 2148 - Russell F. Brown - indicates this position as "found Oneida Co. Mon. - N 1/4 by Robert Winat" symbol is on the south side of the river. Brown also shows a point in the river as "N 1/4 by William Bandow" on county record Map #C1140.
- November 7, 1996 - Surveyor 2148 - Russell F. Brown - indicates this position as "found Oneida County Monument" on county record Map #B3514. This monument is shown on the south side of the river.
- June 14 & 27, 2000 - Surveyor 1182 - William E. Bandow - indicates this position as "Oneida County aluminum monument found" on county record Map #B4567 & B4508. The monument is shown on the south side of the river on both maps.
- January 5, 2013 - Surveyor 2508 - Anthony R. Jones - indicates this position as "found Oneida County aluminum monument" on county record Map #A2733.

September 26, 2024 - I found a 2.25" diameter aluminum pipe monument with a 3.25" diameter aluminum cap stamped to identify the witness corner location. The monument is ±14 feet north of the north bank of the Pelican River. I also found 1 of Bandow's bearing trees dead and standing. I established 2 new reference monuments as shown below.

A-E 7.08(3)(c)(d)
Plan view of corner with references to at least 4 witness monuments.

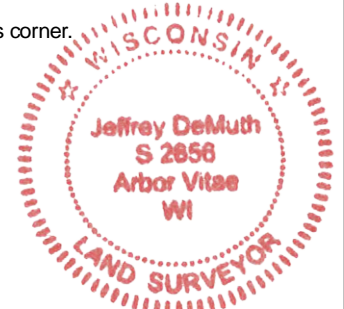


A-E 7.08(3)(e) 1863 Surveyor set a post on the left bank of Pelican River, 1994 Surveyor set an Oneida County witness monument based on evidence, I found an Oneida County aluminum pipe monument with a 3.25" diameter aluminum cap stamped to identify the witness corner location in 2024.

A-E 7.08(3)(f) I accept this monument in good faith as a FOUND PERPETUATED LOCATION of the witness corner.

A-E 7.08(3)(g)(h) This corner was not determined through lost-corner-proportionate methods.

A-E 7.08(3)(i) I, Jeffrey L. DeMuth, Professional Land Surveyor No. S-2656, hereby certify that the corner location on this record was determined by me or under my direction and control, and that this U.S. Public Land Survey Monument Record is correct and complete to the best of my knowledge, and belief.



SIGNATURE

January 2, 2025

DATE

436090020

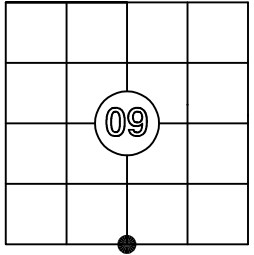
US PUBLIC LAND SURVEY MONUMENT RECORD

Per Wis. Admin. Code § A-E 7.08, a U.S. public land survey monument record shall be prepared and filed with the county survey records as part of any land survey within 60 days of setting or accepting the corner, which includes or requires the perpetuation, restoration, or use of a U.S. public land survey corner and when any of the situations in Wis. Admin. Code § A-E 7.08(1)(a), (b) or (c) arise.

3(a) Corner Identification:

Found Oneida County aluminum monument by Winat (1984)
South 1/4 Corner Section 09
Township 36 North
Range 9 East
4th Principal Meridian
Town of Pelican
Oneida Co., WI

Observed Coordinates:
N: 156339.62
E: 273206.00
Datum: WISCRS
GNSS Control: WISCRS NETWORK
GNSS Method: RTK-Direct
Verification Method: 2



**CORNER ID:
3609090020**

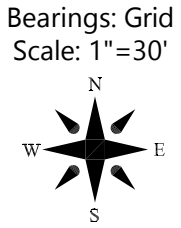
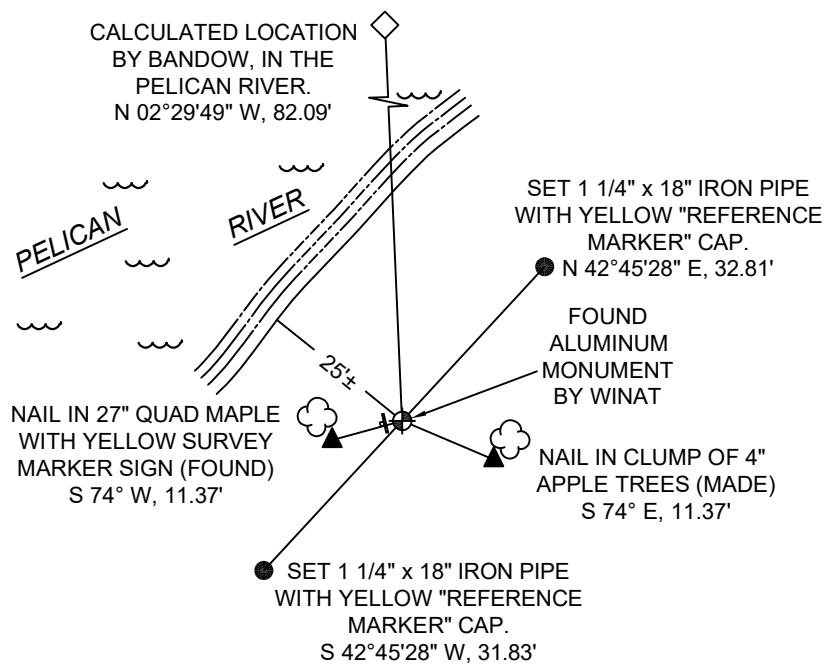
History of Original Corner Establishment

Corner Set: Wood Post
Original Surveyor: Wm. Daugherty
Date of Survey: August, 1863
White Pine, 15" S 28° W, 7 links
White Pine, 8" N 73° E, 16 links

The coordinate value has been verified by at least one of the following methods: 1) comparison to a previously GNSS determined published value; 2) The value is the average of two or more GNSS observations at markedly different times; 3) one or more distances were measured to the corner from temporary GNSS observed offset locations.

3(b)((c)(d)(f)(g)(h)

- Original notes by Daugherty state that he set the quarter post on the left bank of the Pelican River.
- 11/12/1900 - D.H. Vaughn's notes state that he found the stumps of the original trees.
- 7/22/1975 - Bob Winat, S-1040, during the course of surveying for the WiDoT Project I.D. No. 1593-1-21 (revised 1/16/1997), for the Rhinelander Belt Line, U.S.H. 8 right of way plat, shows that the corner was not recovered, but it is on the left bank of the Pelican River.
- 1984 - Bob Winat, S-1040, sets an aluminum monument, stamped to identify the corner, on the left bank of the Pelican River.
- 3/21/1995 - Russ Brown, S-2148, finds Winat's aluminum monument.
- 4/18/2002 - William Bandow, S-1182, finds Winat's aluminum monument.
- 6/5/2003 - Norman Harrison, S-1394, finds Winat's aluminum monument.
- 6/27/2007 - William Bandow, S-1182, finds Winat's aluminum monument.
- 1/5/2013 - Anthony Jones, S-2508, finds Winat's aluminum monument.
- 11/1/2025 - I, Anthony Jones, S-2508, found Winat's aluminum monument, stamped to identify the location, flush with the ground, in good condition, on the left bank of the Pelican River. In a 2021 conversation with Bob, he told me that he found a wood meander post, in 1983, in Pelican River, east of the Southwest corner of Section 9. From the found meander post in the river, he ran a straight line to the southeast corner of Section 9. Using proportionate measurements, he set the aluminum monument for the south quarter post on the left bank of the Pelican River. This location is S 02°29'49" E, 82.09' from the calculated location of the south quarter corner by Bandow (1984). See that USPLSS Monument Record for more information. Winat's aluminum monument has been used by several surveyors to subdivide Section 16. I found one witness and made three more, as shown below. A white guard post is west 0.5' from the monument.



3(i)
I, Anthony R. Jones, Wisconsin Professional Land Surveyor No S-2508, hereby certify that the corner location shown on this record was determined by me, or under my direction or control, and that this U.S. Public Land Survey Monument Record is correct and complete to the best of my knowledge and belief.

