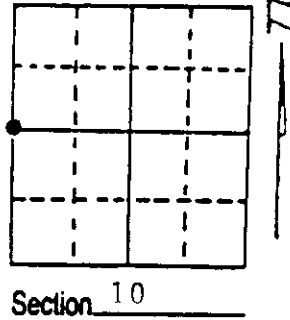


U.S. PUBLIC LAND SURVEY MONUMENT RECORD

Note: This form is intended and designed to fulfill all requirements of Wisconsin Administrative Code, Chapter A-E 7.08 U.S. Public Land Survey Monument Record (3) (a) (b) (c) (d) (e) (f) (g) (h) (i). An additional sheet may be added if necessary to conform with said requirements.

(a) Corner location: Township 36 North
 Range 9 East ~~West~~

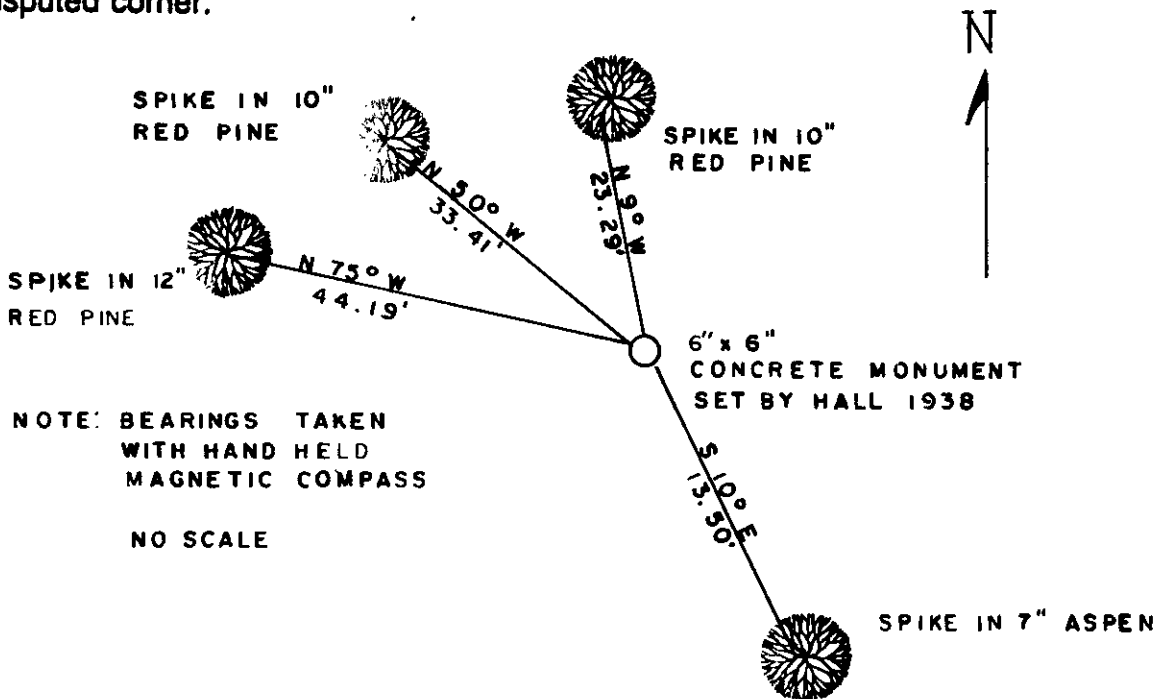
Town/City/Village Pelican
 County Oneida



(b) (f) (g) (h) Description of monument found at this corner and if it was accepted, state all evidence (material, testimonial, occupational, plats, records, other monuments) used as a basis for accepting. If not accepted or if nothing was found, state evidence used as basis for establishing location. If reestablished through lost corner proportionate methods, indicate all monuments, distances and directions used to establish. Indicate type of monument found or set and sign post.

1863-William Daugherty set post 10" White Pine S 39 degrees West 19 links, 8" Birch N 64 degrees East 17 links
 1903-Vaughan found post
 1938-Hall set concrete monument
 1977-William E. Bandow found concrete monument
 1982-William E. Bandow found concrete monument
 1983-Elton A. Peterson found 10x10 inch concrete monument
 1984-Mike Romportyl found concrete monument
 1986-William E. Bandow found concrete monument
 1989-William E. Bandow found concrete monument with brass cap and witnessed as shown below:

(c) (d) (e) Plan view of corner with ties to at least 4 witness monuments. If in disagreement with previously established corner, show the distances between the two corners and also indicate the ties to the disputed corner.



NOTE: BEARINGS TAKEN WITH HAND HELD MAGNETIC COMPASS
 NO SCALE

(i) I, William E. Bandow
 (type or print name) certify that the corner location on this record was determined by me or under my direction and control and that this U.S. Public Land Survey Monument Record is correct and complete to the best of my knowledge and belief.

William E. Bandow 3-11-93
 Signature Date



Stamp

3609092000

Index No. G-13

U.S. PUBLIC LAND SURVEY MONUMENT RECORD

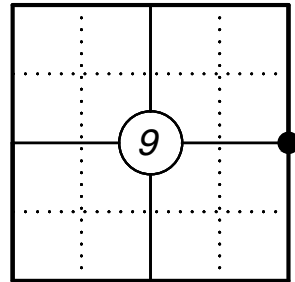
This form is intended and designed to fulfill all requirements of Wisconsin Administrative Code, Chapter A-E 7.08 U.S. Public Land Survey Monument Record (3) (a)(b)(c)(d)(e)(f)(g)(h)(i). An additional sheet may be added if necessary to confirm with said requirements.

Oneida County
Land Information Office
Filed
2/25/2025

(a) Corner Location:

E 1/4 Corner Section 9
Township 36 North
Range 9 East
Town of Pelican
County of Oneida

Corner ID: 3609092000



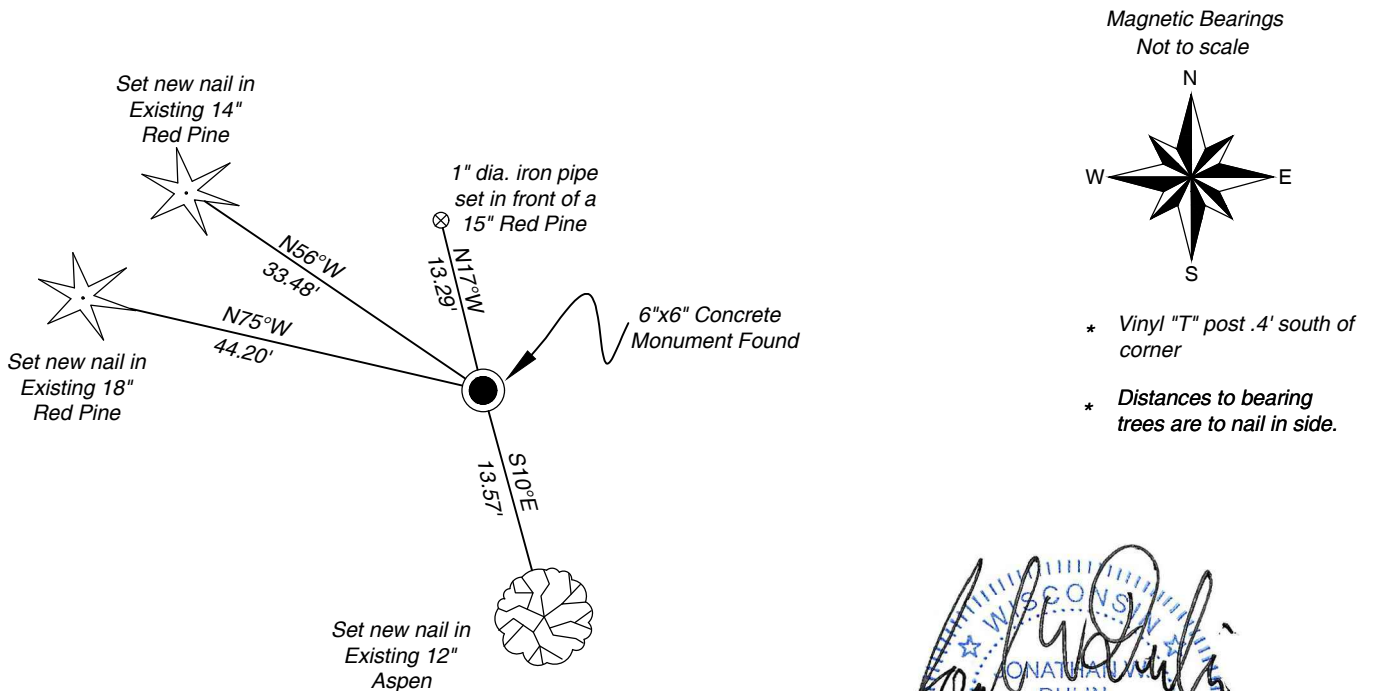
(b) History of Original Corner:

For corner history, see previous U.S. Public Land Survey Monument Record by William E Badow dated 3-11-93.

(f)(g)(h) Description of monument found at this corner and if it was accepted, state all evidence (material, testimonial, occupational, plats, records, other monuments) used as a basis for establishing location. If reestablishing through lost corner proportionate methods, indicate all monuments, distances, and directions used to establish. Indicate type of monument and sign post found or set.

12/23/2023 - I found and accepted the 6"x6" concrete monument at the corner location as well as three bearing trees. Badow's 10" Red Pine N9°W 23.29 is now a stump. I set one additional iron pipe to witness the corner as shown below.

(c)(d)(e) Plan view of corner with ties to at least four witnesses. If in disagreement with previously established corner, show the distances between the two corners and also indicate the tie to the disputed corner.



Jonathan W. Dulin
JONATHAN W. DULIN
S-2754
RHINELANDER,
WI
01/05/24
LAND SURVEYOR

Certification

I, Jonathan W Dulin, Professional Land Surveyor No. 2754, hereby certify that the corner location on this record was referenced by me or under my direction and control and that this U.S. Public Land Survey Monument Record is complete to the best of my knowledge and belief. REF: 2023415

US PUBLIC LAND SURVEY MONUMENT RECORD

Per Wis. Admin. Code § A-E 7.08, a U.S. public land survey monument record shall be prepared and filed with the county survey records as part of any land survey within 60 days of setting or accepting the corner, which includes or requires the perpetuation, restoration, or use of a U.S. public land survey corner and when any of the situations in Wis. Admin. Code § A-E 7.08(1)(a), 7.08(1)(b) or 7.08(1)(c) arise.

3(a) Corner location:

Found a brass disk in a
5"x5" concrete monument
East 1/4 Corner
Section 09
Township 36 North
Range 9 East
4th Principal Meridian
Town of Pelican
Oneida Co., WI

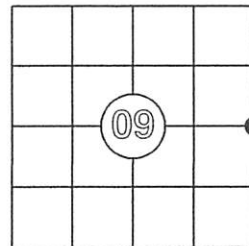
WISCORS:
N: 159047.06
E: 276161.33
Datum: NAD 83 (2011)
GNSS Control: WISCORS Network
GNSS Method: RTK-Direct
Verification Method: 1,2
Published Coordinates:
N: 159047.05
E: 276161.35

The coordinate value, if shown, has been verified by at least one of the following methods: 1) comparison to a previously GNSS determined published value; 2) The value is the average of two or more GNSS observations at markedly different times; 3) one or more distances were measured to the corner from temporary GNSS observed offset locations.

(b) History of Original Corner Establishment

Corner Set: Wood Post
Original Surveyor: Wm. Daugherty
Date of Survey: July, 1863

Original Bearing Trees:
W. Pine, 10" S 39° W, 19 links
Birch, 8" N 64° E, 17 links



CORNER ID:
3609092000

(b)(f)(g)(h)(i): Description of monument found at this corner and, if it was accepted, state all evidence (material, testimonial, occupational, plats, record, other monuments) used as a basis for establishing location. If re-establishing through lost corner proportionate methods, indicate all monuments, distances and directions used to establish this location. Indicate type of monument and sign post found or set.

This is a continuation of a previous USPLSS Monument Record by Surveyor William Bandow (1993). See previous record for additional history on this corner.

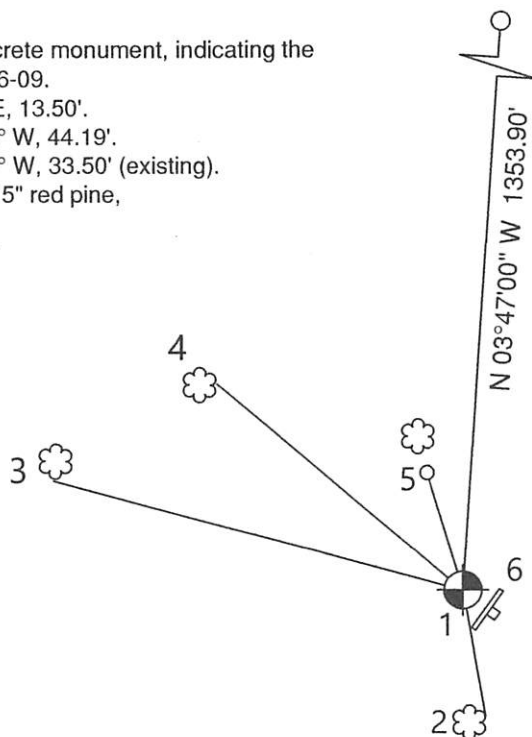
1993 to 7/31/2024: Multiple surveyors have used this monument for the East 1/4 corner

7/31/2024: I found a brass disc mounted in a 5"x5" concrete monument, set by Hall, 1938, as described by Bandow in 1993. I recovered all four witness corners. I did not find the nail in the red pine, N 9° W, but did recover a 1" iron pipe at the base, as shown below.

(c)(d)(e) Plan view of corner with ties to at least 4 witness monuments. If in disagreement with previously established corner, show the distances between the two corners and also indicate the ties to the disputed.

1. Found a brass disk set in a concrete monument, indicating the East 1/4 corner of Section 09-36-09.
2. Found nail in 12" aspen, S 10° E, 13.50'.
3. Found nail in 18" red pine, N 75° W, 44.19'.
4. Found nail in 14" red pine, N 50° W, 33.50' (existing).
5. Found 1" iron pipe in front of a 15" red pine, N 16°58'47" W, 12.87'
6. Plastic, white sign post, SE, 0.6'

N 1/6 Corner-west line
Sec 9-36-09, by Hall
Found 2" iron pipe



Bearings: Magnetic
Scale: 1"=20'



(i) I, Anthony R. Jones, Wisconsin Professional Land Surveyor No S-2508, hereby certify that the corner location shown on this record was determined by me, or under my direction or control, and that this U.S. Public Land Survey Monument Record is correct and complete to the best of my knowledge and belief.

[Signature]
Anthony R. Jones, PLS No. S-2508 7/31/24 Date

Index No. _____