

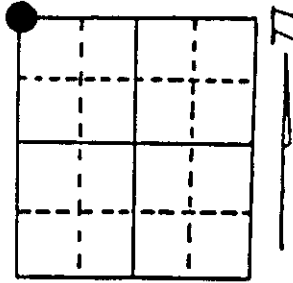
# U.S. PUBLIC LAND SURVEY MONUMENT RECORD

**Note:** This form is intended and designed to fulfill all requirements of Wisconsin Administrative Code, Chapter A-E 7.08 U.S. Public Land Survey Monument Record (3) (a) (b) (c) (d) (e) (f) (g) (h) (i). An additional sheet may be added if necessary to conform with said requirements.

(a) Corner location: Township 36 North  
 Range 9 East/West

Town/City/Village Pelican Lake

County Oneida



Section 24

(b) (f) (g) (h) Description of monument found at this corner and if it was accepted, state all evidence (material, testimonial, occupational, plats, records, other monuments) used as a basis for accepting. If not accepted or if nothing was found, state evidence used as basis for establishing location. If reestablished through lost corner proportionate methods, indicate all monuments, distances and directions used to establish. Indicate type of monument found or set and sign post.

1863 - Wm. Daugherty established this corner at 80.00 Chains and made BT: 8" Birch, S22°W, 44 Links.

1909 - Vaughan restored corner by Lost Methods: set a wood post and BTs:  
 4" Birch, N2½°W, 42 ¾ Links                      8" Birch, S27½°W, 33 Links  
 Found: Distance East - 87.59½ Chains; Distance West - 87.85½ Chains

1924 - Vaughan returned and set iron pipe and new BTs:  
 6" Red Pine, N37½°W, 48 Links (31.68')  
 8" Red Pine, S35°W, 50½ Links (33.16')  
 16" Red Pine, N61°W, 131 Links (86.46')

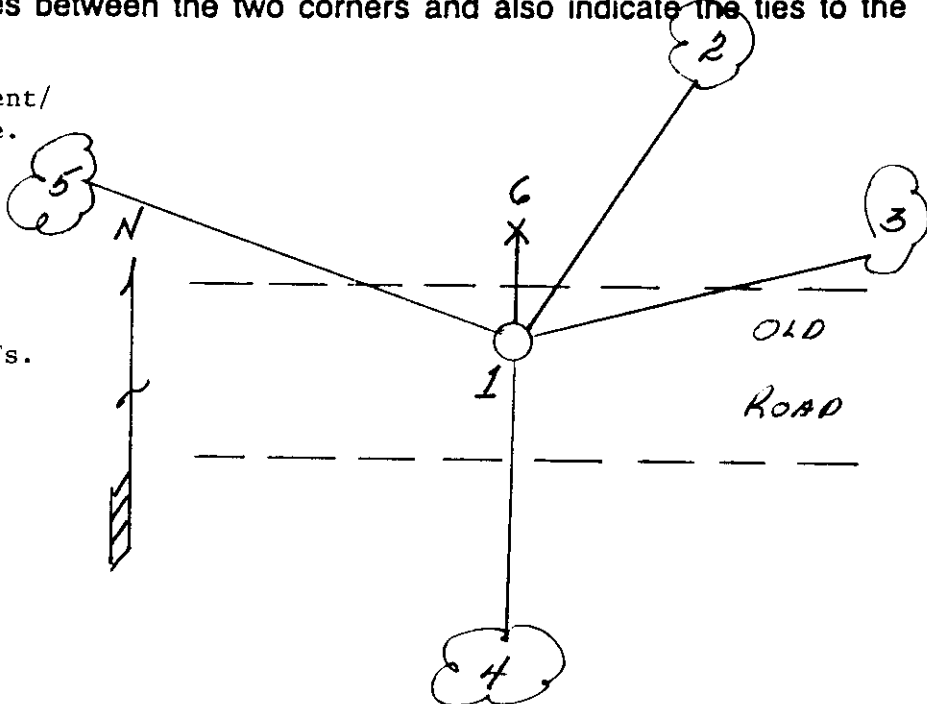
1/6/1992 - Milo E. Stefan found 2½" iron pipe flush to ground with old BT: 18" Red Pine, N55°W, 81.21'. New BTs: 8" Red Oak, N18°E, 40.58'; 10" White Pine, South, 22.93'. Distance East to Section Corner 5767.08'.

2/12/1992 - Milo E. Stefan set new aluminum monument, made one new BT and set sign post.

(c) (d) (e) Plan view of corner with ties to at least 4 witness monuments. If in disagreement with previously established corner, show the distances between the two corners and also indicate the ties to the disputed corner.

- 1) 2" x 30" aluminum county monument/  
2½" iron pipe buried along side.
- 2) 8" Red Oak, N18°E, 40.58'.
- 3) 5" White Pine, N88°E, 22.85'.
- 4) 10" White Pine, South, 22.93'.
- 5) 18" Red Pine, N55°W, 81.21'.
- 6) Plastic Sign Post, North, 7.4'.

Distances to nail in side of BTs.  
 Stump blaze scribed "BT".



(i) I, Milo E. Stefan  
 (type or print name) certify that the corner location on this record was determined by me or under my direction and control and that this U.S. Public Land Survey Monument Record is correct and complete to the best of my knowledge and belief.

Milo E. Stefan  
 Signature

2/28/92  
 Date



Stamp

Index No. N-21

3609140000

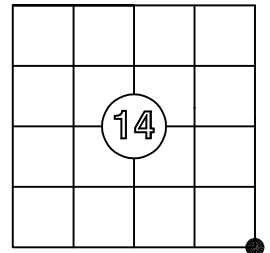
## US PUBLIC LAND SURVEY MONUMENT RECORD

Per Wis. Admin. Code § A-E 7.08, a U.S. public land survey monument record shall be prepared and filed with the county survey records as part of any land survey within 60 days of setting or accepting the corner, which includes or requires the perpetuation, restoration, or use of a U.S. public land survey corner and when any of the situations in Wis. Admin. Code § A-E 7.08(1)(a), (b) or (c) arise.

**3(a) Corner Identification:**

Found Oneida County aluminum monument Southeast Corner Section 14 Township 36 North Range 9 East 4th Principal Meridian Town of Pelican Oneida Co., WI

Observed Coordinates:	Published Coordinates:
N: 151452.23	N: 151452.286 (ΔN: 0.056)
E: 286775.84	E: 286775.790 (ΔE: 0.050)
Datum: NAD 83(2011)	
GNSS Control: WISCRS Network	
GNSS Method: RTK-Direct	
Verification Method: 1	



**CORNER ID:**  
**3609140000**

**History of Original Corner Establishment**

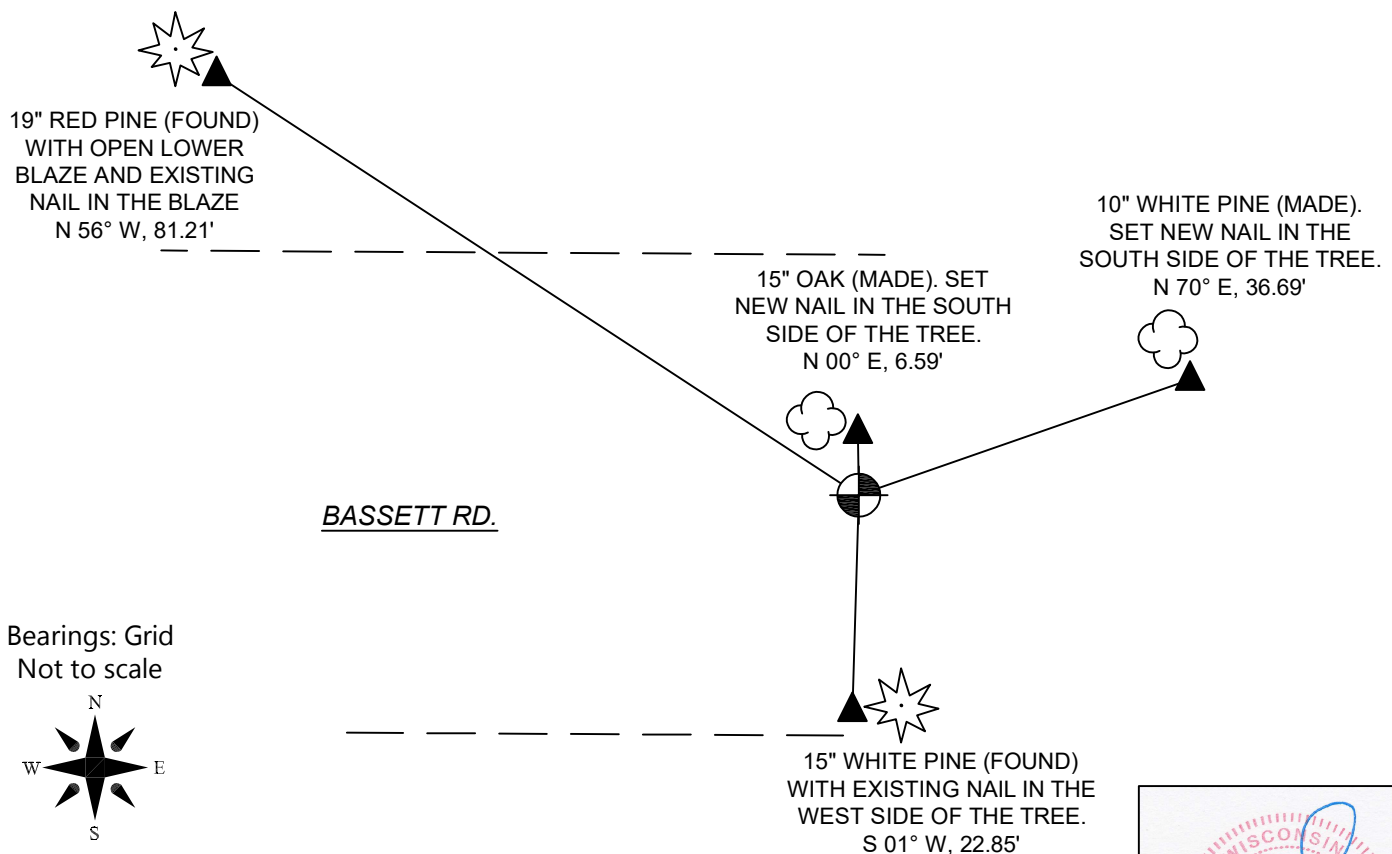
Corner Set: Wood Post  
Original Surveyor: Wm. Daugherty  
Date of Survey: July/August, 1863  
Birch, 8" S 22° W, 44 links  
Not other tree near

The coordinate value has been verified by at least one of the following methods: 1) comparison to a previously GNSS determined published value; 2) The value is the average of two or more GNSS observations at markedly different times; 3) one or more distances were measured to the corner from temporary GNSS observed offset locations.

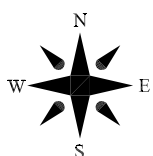
**3(b)((c)(d)(f)(g)(h))**

This is a continuation of a previous USPLSS Monument Record by Surveyor Milo Stefan (1992). See previous record for additional history on this corner.

- 2/28/1992 - Milo Stefan, S-1558, finds a 2 1/2" iron pipe and sets Oneida County aluminum monument.
- 7/27/2004 - Matt Hoglund, S-1910, finds and uses a 2 1/2" iron pipe, noting that Stefan's aluminum monument is S 83°11'35" E, 0.47'.
- 7/31/2009 - Kevin Bixby, S-2343, finds an Oneida County monument.
- 3/22/2012 - Kevin Bixby, S-2343, finds an Oneida County monument.
- 6/25/2018 - Kevin Bixby, S-2343, finds an Oneida County Monument.
- 12/16/2025 - I, Anthony Jones, S-2508, found the Oneida County aluminum monument. I found two of Stefan's witnesses in good condition ( red pine, N 56° W, and white pine, S 01° W). Both witnesses to the northeast are gone, so I made two new witnesses, as shown below.



Bearings: Grid  
Not to scale



**3(i)**

I, Anthony R. Jones, Wisconsin Professional Land Surveyor No S-2508, hereby certify that the corner location shown on this record was determined by me, or under my direction or control, and that this U.S. Public Land Survey Monument Record is correct and complete to the best of my knowledge and belief.

