

This form is intended to fulfill the requirements of Chapter A-E 7.08 (3)(a) thru (i) U.S. Public Land Survey Monument Location Record, Wisconsin Administrative Code. Use the reverse side of form for continuation.

U.S. PUBLIC LAND SURVEY MONUMENT LOCATION RECORD

Recorders Data

USPLS CORNER: SOUTH WITNESS MC SECTION: 13 TOWNSHIP: 36 NORTH RANGE: 09 EAST

NAME OF WATERWAY FOR M.C. CORNER : GEORGE LAKE SECTION LINE: WEST

(CITY)(VILLAGE)(TOWN) OF: PELICAN COUNTY OF: ONEIDA

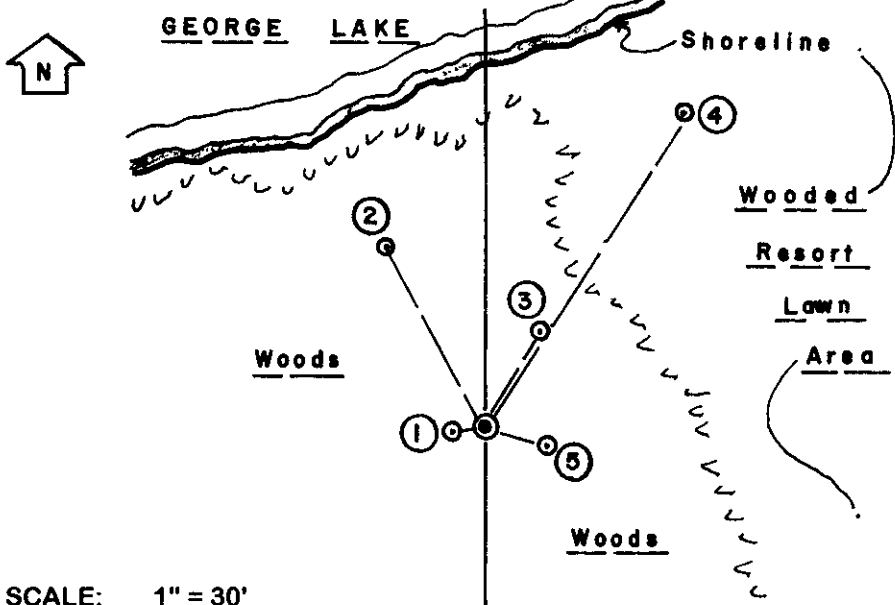
Description of monument found or placed and all other evidence used as the basis for monument location; including monuments and related measurements required if the corner location was reestablished by lost corner proportionate methods. Also indicate name of original surveyor, original survey date and the corner monument, bearing trees, witness or other reference monuments established; including measured bearing and distance ties, from available records.

Found and accepted an uncapped 3/4" dia. iron pipe with upper 9" bent, so I carefully excavated to reveal the vertical soil cavity of the bottom 16" of the pipe and reset it with a standard 2" dia. by 30" long aluminum pipe monument with split bottom end and stamped Oneida County cap nearly flush to existing grade. Old bent iron pipe left flat on grade nearby.

In August 1865, William E. Daugherty/GLO set a wood post as the original corner and marked OBTs: A ?dia. Bw S07°E 118 links and a 16" Tamarack S13°W 106 links; all now obliterated; in August 1912, D.H. Vaughan found GLO MC post gone and set a new witness MC post and marked new BTs: a 17" Pw stump South 55 links, as nothing else near, per notes on Page 67 of Old Fieldbook 7 in Oneida County survey records; post and BT now obliterated. In April 1924, D.S. Burnette set a witness MC post and marked new BTs: a 5" Bw S05°30'E 42.0', a 16" Pw S20°00'W 20.0' and a 6" twin Bw East 36.3,' per notes on Page 18 of Old Fieldbook 29 in Oneida County survey records; all now obliterated.

In May 1975, Lester J. Scmit/RLS 1192 notes an iron pipe at this corner per Plat of Survey B-872 in Oneida County survey records. In February 1977, William E. Bandow/RLS 1182 notes an iron pipe at this corner per Plat of Survey B-618 in Oneida County survey records. In May 1980, Joseph C. Kirby/RLS 253 notes an iron pipe at this corner per Plat of Survey B-2729 in Oneida County survey records. In May 1992, William E. Bandow/RLS1182 notes a 1" dia. iron pipe at this corner per Plat of Survey C-902 in Oneida County survey records and in November 1993 he also noted a 3/4" dia. iron pipe at this corner per Plat of Survey B-2833 in Oneida County survey records. This recovery completed on September 27, 2001 and was directly witnessed by the assistance of adjacent resort owner James Forsyth, who was very pleased that the section line was finally determined to fix the location of the West boundary of his land parcel and at the George Lake shoreline.

Plan view map of monument location with bearing and distance ties to a minimum of four(4) described witness or reference monuments of concrete, natural stone, iron, live bearing trees or equivalent material. If applicable, also show a minimum of two(2) bearing and distance ties to any other monument found and not accepted; including the bearing and distance from the accepted monument.



- WITNESS MONUMENT TIES:**
- ① New BT 5.5" Pw S80°W 5.00'.
 - ② New BT 10" Pw N29°W 32.00'.
 - ③ New BT 9" Pw N29°E 17.70'.
 - ④ Old 1.25" dia. iron pipe with uncapped top flush with resort lawn area N31.5°E 58.55'.
 - ⑤ New BT 6" Pw S73°E 9.80'.
- Standard white poly 'T' corner marker post set along West side of corner monument.
- Corner falls 58' South of existing shoreline of George Lake this date.

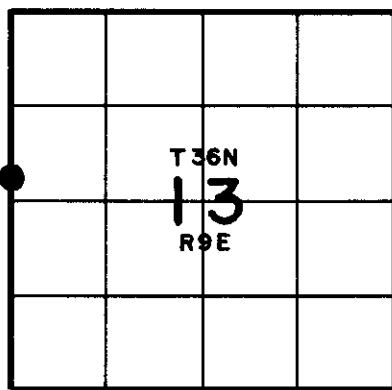
SCALE: 1" = 30'

Unless otherwise indicated, all bearing tree ties are to a .25" dia. by 2.5" long PK nail with a 1.25" dia. steel washer driven into unblazed right face and a .25" dia. by 2.5" long PK nail with a 2" dia. steel washer stamped BT is also driven into unblazed face of bearing tree at DBH; the basis for measured bearings is by compass to nearest degree and all tie distances are measured horizontal by steel tape corrected to nearest 1/100th feet at standard temperature of 68° F.



LAND SURVEYOR CERTIFICATE:
 I, William C. Rohde, hereby certify that I am duly licensed as a Professional Land Surveyor in the State of Wisconsin; that this USPLS monument location was determined by me and/or under my direct supervision and control; and that this U.S. Public Land Survey Monument Location Record is true and correct to the best of my knowledge and belief.

Signed *William C. Rohde*
 William C. Rohde RLS 841

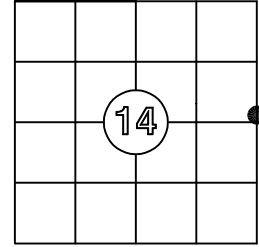


US PUBLIC LAND SURVEY MONUMENT RECORD

Per Wis. Admin. Code § A-E 7.08, a U.S. public land survey monument record shall be prepared and filed with the county survey records as part of any land survey within 60 days of setting or accepting the corner, which includes or requires the perpetuation, restoration, or use of a U.S. public land survey corner and when any of the situations in Wis. Admin. Code § A-E 7.08(1)(a), (b) or (c) arise.

3(a) Corner Identification:

Found aluminum capped capped monument	Observed Coordinates: N: 154360.39
Set by Rohde in 2002	E: 287068.98
Witness Meander Corner Section 14	Datum: WISCRS
Township 36 North	GNSS Control: WISCRS NETWORK
Range 9 East	GNSS Method: RTK-Direct
4th Principal Meridian	Verification Method: 1
Town of Pelican	
Oneida Co., WI	



**CORNER ID:
3609142100**

History of Original Corner Establishment

Corner Set: Wood Post
Original Surveyor: Wm. Daugherty
Date of Survey: August, 1865
Birch, (no diameter given) S 7° E, 118 links
Tamarack, 16" S 13° W, 106 links

The coordinate value has been verified by at least one of the following methods: 1) comparison to a previously GNSS determined published value; 2) The value is the average of two or more GNSS observations at markedly different times; 3) one or more distances were measured to the corner from temporary GNSS observed offset locations.

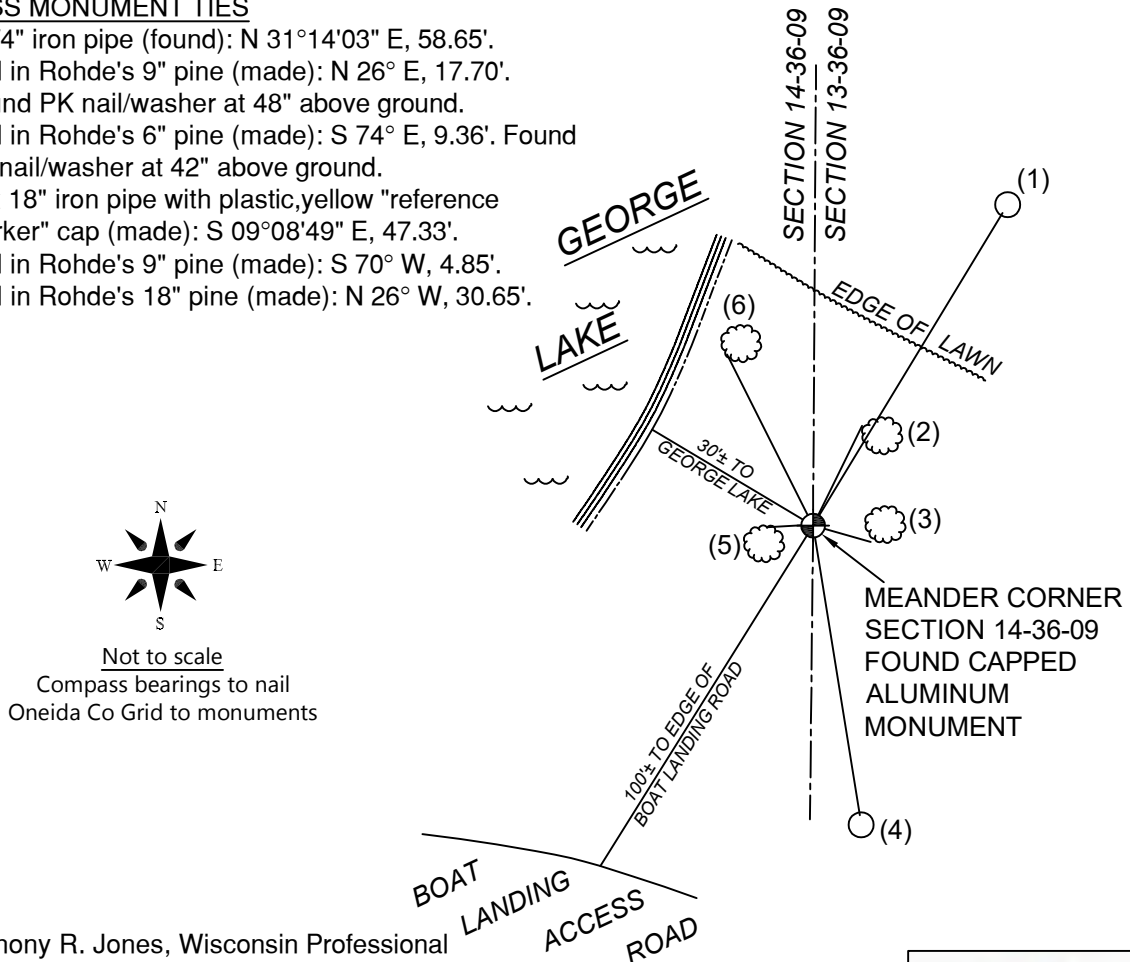
3(b)(c)(d)(f)(g)(h)

This is a continuation of a previous USPLSS Monument Record by Surveyor William Rohde (2002). See previous record for additional history on this corner.

- Rhode's monument record of March 25, 2002 shows he set an aluminum capped monument over a found iron pipe.
- 10/24/2011 - Todd Loftus, S-1523 finds an aluminum Oneida County monument. (C.S.M. No. 3949)
- 10/18/2015 - Anthony Jones, S-2508 finds an aluminum Oneida County monument. (A3097)
- 5/31/2022 - Todd Loftus, S-1523, finds an Oneida County Monument. (B8373).
- 4/12/2025 - I, Anthony Jones, S-2508, found an aluminum capped monument in good condition, 30'± east of the shore of Lake George. All witnesses are shown below. A white poly "T" post is directly adjacent to the monument.

WITNESS MONUMENT TIES

1. 1 1/4" iron pipe (found): N 31°14'03" E, 58.65'.
2. Nail in Rohde's 9" pine (made): N 26° E, 17.70'. Found PK nail/washer at 48" above ground.
3. Nail in Rohde's 6" pine (made): S 74° E, 9.36'. Found PK nail/washer at 42" above ground.
4. 1" x 18" iron pipe with plastic, yellow "reference marker" cap (made): S 09°08'49" E, 47.33'.
5. Nail in Rohde's 9" pine (made): S 70° W, 4.85'.
6. Nail in Rohde's 18" pine (made): N 26° W, 30.65'.



Not to scale
 Compass bearings to nail
 Oneida Co Grid to monuments

3(i) I, Anthony R. Jones, Wisconsin Professional Land Surveyor No S-2508, hereby certify that the corner location shown on this record was determined by me, and that this U.S. Public Land Survey Monument Record is correct and complete to the best of my knowledge and belief.

