

U.S. PUBLIC LAND SURVEY MONUMENT LOCATION RECORD

Recorders Data

USPLS CORNER: NORTH WITNESS MC SECTION: 13 TOWNSHIP: 36 NORTH RANGE: 09 EAST

NAME OF WATERWAY FOR M.C. CORNER : GEORGE LAKE SECTION LINE: WEST

(CITY)(VILLAGE)(TOWN) OF: PELICAN COUNTY OF: ONEIDA

Description of monument found or placed and all other evidence used as the basis for monument location; including monuments and related measurements required if the corner location was reestablished by lost corner proportionate methods. Also indicate name of original surveyor, original survey date and the corner monument, bearing trees, witness or other reference monuments established; including measured bearing and distance ties, from available records.

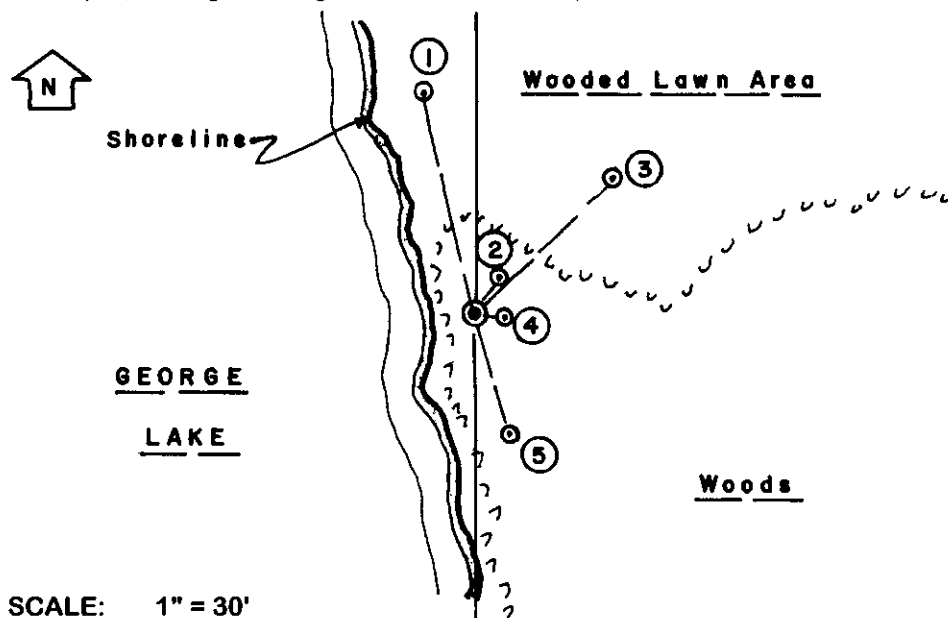
Found and accepted an old rusted undisturbed and plumb 1" dia. iron pipe with uncapped top 2" above grade. I left iron pipe in place and drove a standard 2" dia. by 30" long aluminum pipe monument with split bottom end and stamped Oneida County cap to 4" above grade and placed four(4) 6" +/- dia. rocks as a protective cairn around the monument.

In August 1865, William E. Daugherty/GLO set a wood post as the original corner and marked OBTs: a 16" Pw N02°W 11 links and a 10" Bw S44°E 5 links; all now obliterated. In April 1924, D.S. Burnette set a witness MC post and marked new BTs: an 18" Pr S18°40'E 38.5', now a probable 18" low Pr stump S26°E 31.6' from present corner monument to lower face blaze with faint 'T' of BT scribe evident, and a 12" Pr N17°00'W 80.1', now obliterated as well as wood post., which would have fallen on the N/S section line using Burnettes bearing and distance tie to his SE BT.

In 1975, Lester J. Schmit/RLS 1192, notes an iron pipe set on the section line on North shore of George Lake at MC location per Plat of Alburleigh Shores, which I verified by measurement from an iron pipe found at the most westerly corner of Lot 68 of the latter plat, per Plat of Survey B-872 in Oneida County survey records. In July 2000, Devon J. Vandenneuvel/RLS 1795, notes an iron pipe found near section line at this corner location per Plat of Survey B-4721 in Oneida County survey records; upon my query, he agreed such iron pipe is the same iron pipe I had found and was undoubtedly the witness MC conforming to the Alburleigh Shores plat and Schmits Plat of Survey B-872.

This recovery completed September 27, 2001 and witnessed by Edmund O'Hara, adjacent owner at Fire No. 2981 George Lake Road upon my initial recovery September 14, 2001.

Plan view map of monument location with bearing and distance ties to a minimum of four(4) described witness or reference monuments of concrete, natural stone, iron, live bearing trees or equivalent material. If applicable, also show a minimum of two(2) bearing and distance ties to any other monument found and not accepted; including the bearing and distance from the accepted monument.



SCALE: 1" = 30'

Unless otherwise indicated, all bearing tree ties are to a .25" dia. by 2.5" long PK nail with a 1.25" dia. steel washer driven into unblazed right face and a .25" dia. by 2.5" long PK nail with a 2" dia. steel washer stamped BT is also driven into unblazed face of bearing tree at DBH; the basis for measured bearings is by compass to nearest degree and all tie distances are measured horizontal by steel tape corrected to nearest 1/100th feet at standard temperature of 68° F.

WITNESS MONUMENT TIES:

- ① Old 1" dia. uncapped iron pipe found flush N14°W 35.58'.
- ② 1/2" dia. Rebar found 2" up N40°E 6.50'.
- ③ Old 1" dia. uncapped iron pipe found flush N45°E 30.02'.
- ④ New BT 12" Pr S80°E 4.43'.
- ⑤ Old uncapped iron pipe found 3" up S16°E 20.03'.

Standard white poly "T" corner marker post set 6" South of corner monument.

Corner falls 6.5' East of existing shoreline of George Lake this date.

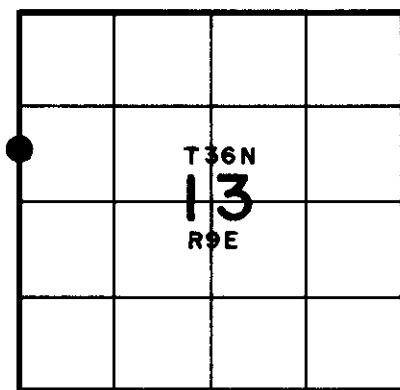
RLS SEAL:



LAND SURVEYOR CERTIFICATE:

I, William C. Rohde, hereby certify that I am duly licensed as a Professional Land Surveyor in the State of Wisconsin; that this USPLS monument location was determined by me and/or under my direct supervision and control; and that this U.S. Public Land Survey Monument Location Record is true and correct to the best of my knowledge and belief.

Signed *William C. Rohde*
William C. Rohde RLS 841



SECTION LOCATION MAP

INDEX NO.

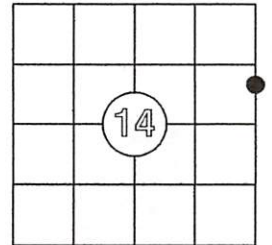
3609142600

US PUBLIC LAND SURVEY MONUMENT RECORD

Per Wis. Admin. Code § A-E 7.08, a U.S. public land survey monument record shall be prepared and filed with the county survey records as part of any land survey within 60 days of setting or accepting the corner, which includes or requires the perpetuation, restoration, or use of a U.S. public land survey corner and when any of the situations in Wis. Admin. Code § A-E 7.08(1)(a), (b) or (c) arise.

3(a) Corner Identification:

Found aluminum capped monument	Observed Coordinates:
Set by Rohde in 2002	N: 154855.46
Witness Meander Corner	E: 287072.85
Section 14	Datum: NAD83(2011)
Township 36 North	GNSS Control: WISCRS NETWORK
Range 9 East	GNSS Method: RTK-Direct
4th Principal Meridian	Verification Method: 1
Town of Pelican	
Oneida Co., WI	



CORNER ID:
3609142600

The coordinate value has been verified by at least one of the following methods: 1) comparison to a previously GNSS determined published value; 2) The value is the average of two or more GNSS observations at markedly different times; 3) one or more distances were measured to the corner from temporary GNSS observed offset locations.

History of Original Corner Establishment

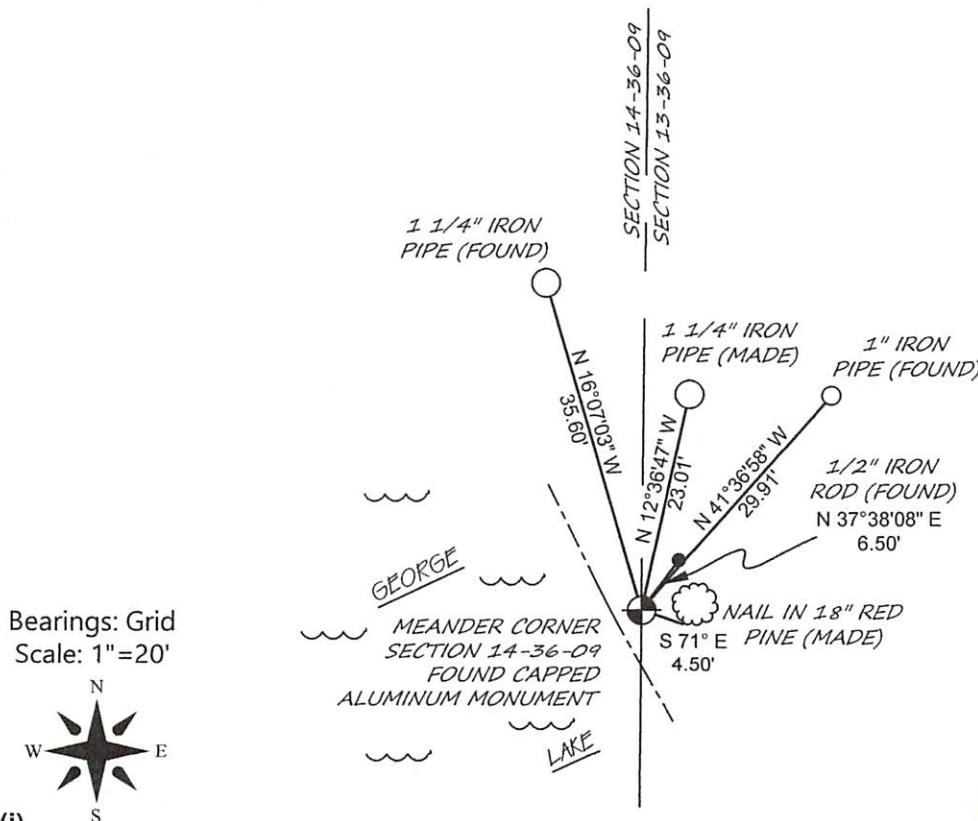
Corner Set: Wood Post
Original Surveyor: Wm. Daugherty
Date of Survey: June, 1865
White Pine 16", N 2° W, 11 links
White birch 10" S 44° E, 5 links

3(b)(c)(d)(f)(g)(h)

This is a continuation of a previous USPLSS Monument Record by Surveyor William Rohde (2002). See previous record for additional history on this corner.

- Rohde's monument record of March 25, 2002 shows he set an aluminum capped monument over a found iron pipe, accepted as the historic meander corner.
- 10/18/2015 - Anthony Jones, S-2508, found the aluminum capped monument.
- 4/12/2025 - I, Anthony Jones, S-2508, found an aluminum capped monument in good condition, 3'± east of the shore of Lake George. The old, uncapped iron pipe found, by Rohde, 3" up, S 16° E, 20.03', was not recovered. All other witness are shown below. I did not recover the nail in the 18" red pine, so I set a new nail in the side of the tree. A white poly "T" post is 6" south of monument.

Magnetic bearing and distance is to a nail in the side of the witness tree.



3(i)

I, Anthony R. Jones, Wisconsin Professional Land Surveyor No S-2508, hereby certify that the corner location shown on this record was determined by me, or under my direction or control, and that this U.S. Public Land Survey Monument Record is correct and complete to the best of my knowledge and belief.