

This form is intended to fulfill requirements of Chapter A-E 7.08 (3)(a) thru (i) U.S. Public Land Survey Monument Location Record, Wisconsin Administrative Code. Use reverse side for geodetic location data and/or other continuation purposes.

# U.S. PUBLIC LAND SURVEY MONUMENT LOCATION RECORD

Recorders Data

USPLS CORNER: NORTH 1/4 SECTION: 22 TOWNSHIP: 36 NORTH RANGE: 9 EAST

NAME OF WATERWAY FOR M.C. CORNER: N/A SECTION LINE: N/A

~~(CITY/VILLAGE/TOWN)~~ OF: PELICAN COUNTY OF: ONEIDA

Description of monument found or placed and all other evidence used as the basis for monument location; including monuments and related measurements required if the corner location was reestablished by lost corner proportionate methods. Also indicate name of original surveyor, original survey date and the corner monument, bearing trees, witness or other reference monuments established; including measured bearing and distance ties, from available records.

Found and accepted center of a hex head bolt flush with existing blacktop roadway surface; I drove head of bolt below road surface to deter disturbance by future road plowing.

In 1865, William E. Daugherty/GLO set a wood post as the original corner and marked OBTs, a 14" Py N87.5°E 10.59 and a 14" Py S83.25°E 10.20, all of which are now obliterated.

In 1980, James Kasson, RLS 1416, notes a nail in blacktop roadway at this corner and new BTs, a 12" Pj N08°E 56.0' and a 12" Pj S20°E 37.6', per his Plat of Survey filed as L-161 in Oneida County survey records.

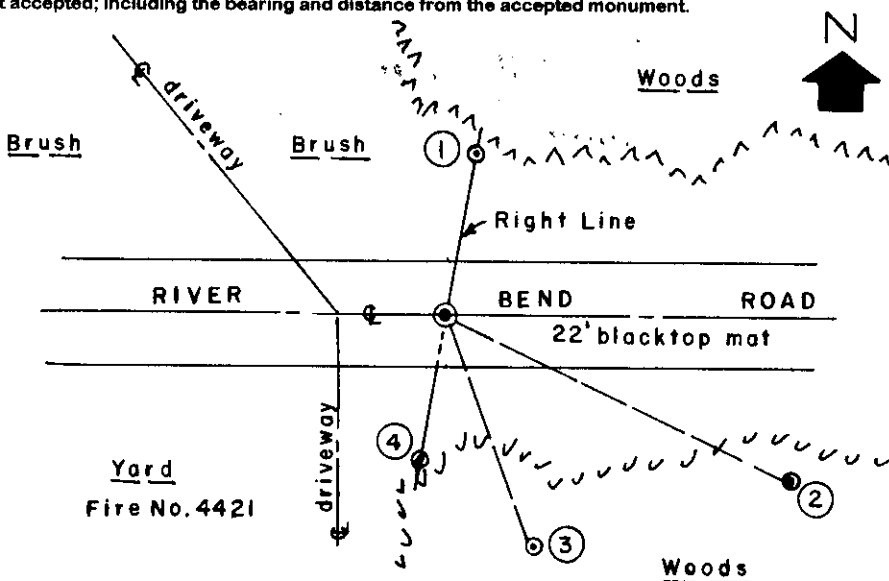
In 1982 and 1984, Sy Poskie, RLS 140, notes a PK nail in center of blacktop roadway at this corner location per his Plats of Survey filed as B-108, B-110, B-1894 and B-1896 in Oneida County survey records.

In 1986, Todd Loftus, RLS 1523, notes a PK nail at this corner location per his Plat of Survey filed as B-3593 in Oneida County survey records.

In 1995, William Badow, RLS 1182, notes a bolt at this corner location in center of blacktop roadway per his Plat of Survey C-1219 filed in Oneida County survey records.

This recovery completed April 28, 1999; there were no direct witnesses other than vehicle drive-bys.

Plan view map of monument location with bearing and distance ties to a minimum of four(4) described witness or reference monuments of concrete, natural stone, iron, live bearing trees or equivalent material. If applicable, also show a minimum of two(2) bearing and distance ties to any other monument found and not accepted; including the bearing and distance from the accepted monument.



**WITNESS MONUMENT TIES:**

- ① Older 1" dia. iron pipe found in top of which I set a standard yellow poly Reference Mark cap flush with grade N10°E 33.25'.
- ② New BT 15" Pr S64°E 79.55'.
- ③ New BT 26" Pw S20°E 52.23'.
- ④ Set a 3/4" dia. by 24" long iron pipe with standard yellow poly Reference Mark cap flush with grade S10°W 31.80'.

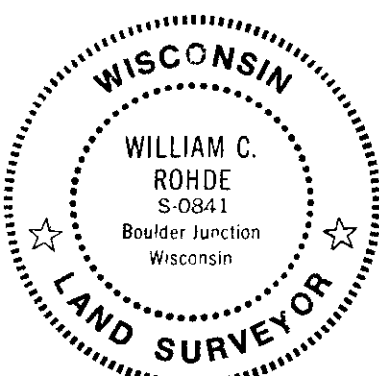
Standard white poly 'T' marker post set 22' South of corner.

No witnesses other than drive-bys.

SCALE: 1" = 40'

Unless otherwise indicated, all bearing tree ties are to a .25" dia. by 2.5" long PK nail with a 1.25" dia. steel washer driven into unblazed right face and a .25" dia. by 2.5" long PK nail is also driven into unblazed face of bearing tree at DBH; the basis for measured bearings is by magnetic compass to nearest degree and all tie distances are measured horizontal by steel tape corrected to nearest 1/100th feet at standard temperature of 68 degrees Fahrenheit.

RLS SEAL:

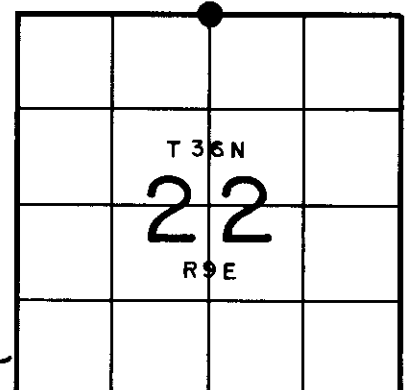


**LAND SURVEYOR CERTIFICATE:**

I, William C. Rohde, hereby certify that I am duly licensed as a Professional Land Surveyor in the State of Wisconsin; that this USPLS monument location was determined by me and/or under my direct supervision and control; and that this U.S. Public Land Survey Monument Location Record is true and correct to the best of my knowledge and belief.

Signed: *William C. Rohde*  
 William C. Rohde RLS 841

Date Signed: May 8, 1999



SECTION LOCATION MAP

INDEX NO. N 15

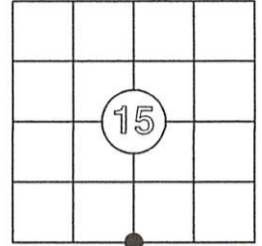
3609 150020

## US PUBLIC LAND SURVEY MONUMENT RECORD

Per Wis. Admin. Code § A-E 7.08, a U.S. public land survey monument record shall be prepared and filed with the county survey records as part of any land survey within 60 days of setting or accepting the corner, which includes or requires the perpetuation, restoration, or use of a U.S. public land survey corner and when any of the situations in Wis. Admin. Code § A-E 7.08(1)(a), (b) or (c) arise.

### 3(a) Corner Identification:

Found 1/2" bolt as noted by Rhode in 1999 South 1/4 Corner Section 15 Township 36 North Range 9 East 4th Principal Meridian Town of Pelican Oneida Co., WI	Observed Coordinates: N: 151200.75 E: 278314.01 Datum: WISCRS GNSS Control: WISCRS NETWORK GNSS Method: RTK-Direct Verification Method: 1, 2	Published County Coordinates: N: 151200.57 E: 278314.05 Datum: NAD 1983 (91)
---------------------------------------------------------------------------------------------------------------------------------------------------------------------------------	----------------------------------------------------------------------------------------------------------------------------------------------------------------	---------------------------------------------------------------------------------------



**CORNER ID:**  
3609150020

### History of Original Corner Establishment

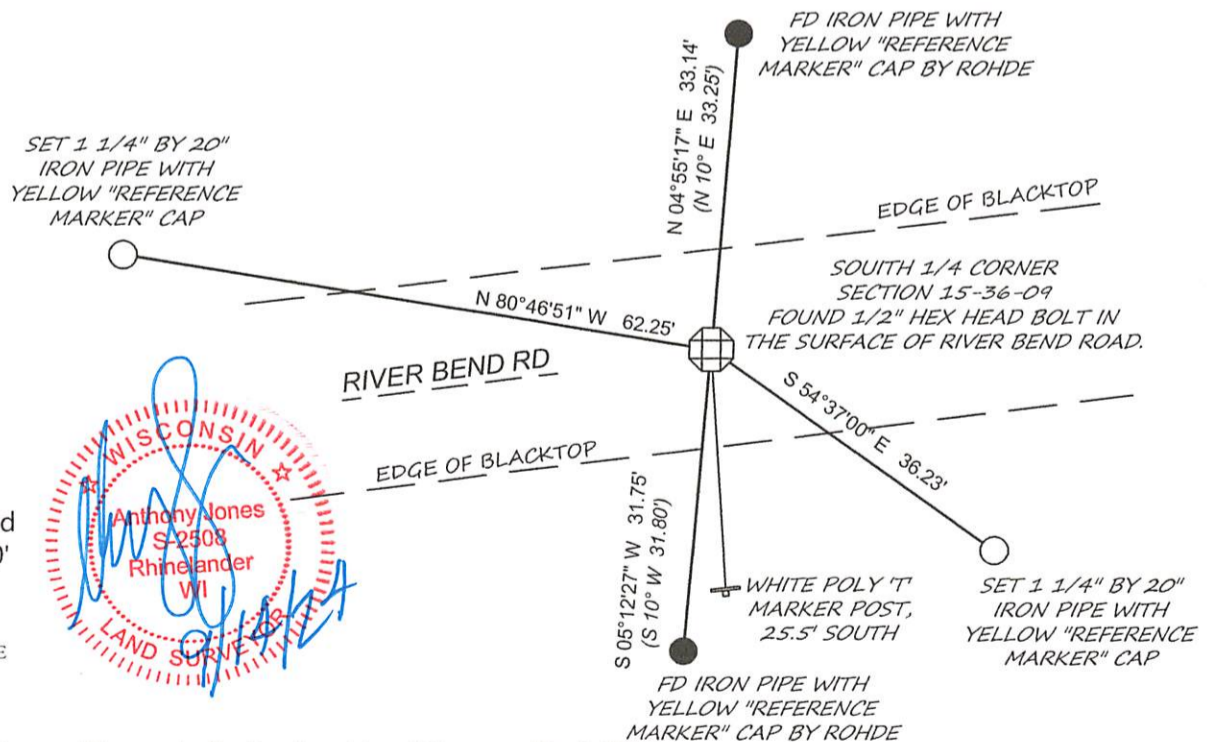
Corner Set: Wood Post  
Original Surveyor: Wm. Daugherty  
Date of Survey: June, 1863  
Yellow Pine, 14" S 83 1/4° E, 10.20 links  
Yellow Pine, 14" N 87 1/2° E, 10.59 links

The coordinate value has been verified by at least one of the following methods: 1) comparison to a previously GNSS determined published value; 2) The value is the average of two or more GNSS observations at markedly different times; 3) one or more distances were measured to the corner from temporary GNSS observed offset locations.

### 3(b)((c)(d)(f)(g)(h)

This is a continuation of a previous USPLSS Monument Record by Surveyor William Rohde (1999). See previous record for additional history on this corner.

- Rhode's monument record of May 8, 1999 shows a bolt, recovered by William Badow, S-1182, at this location
- April 7, 2000 - Devon Vanden Heuvel, S-1795, shows a PK Nail at this location (Oneida Co. Map No. B4474).
- April 27, 2000 - William Badow, S1182, shows a bolt at this location (Oneida Co. Map No. B4566).
- September 5, 2003 - James Rein, S-1234, shows a PK Nail at this location (Oneida Co. Map No. C1997).
- October 11, 2005 - Kevin Bixby, S-2343, shows a PK Nail at this location (Oneida Co. Map No. B6265)
- June 1, 2006 - Jeff DeMuth, S-2656, shows a PK Nail at this location (Oneida Co. Map No. A1754)
- September 23, 2020 - Todd Loftus, S1523, shows an iron bolt at this location (Oneida Co. Map No. A3702)
- June 12, 2024 - Loftus again shows a 1/2" iron bolt at this location.
- September 14, 2024 - I found the 1/2" bolt that Rohde calls for in his tie sheet.
- The 15" red pine by Rohde is now a rotting stump. The 26" white pine at S 20° E, 52.23' is still alive and has a PK Nail and 3" washer at chest height. Due to terrain and vegetation, it is no longer a viable tie. I set new reference monuments, shown below.



Bearings: Grid  
Scale: 1"=20'



### 3(i)

I, Anthony R. Jones, Wisconsin Professional Land Surveyor No S-2508, hereby certify that the corner location shown on this record was determined by me, or under my direction or control, and that this U.S. Public Land Survey Monument Record is correct and complete to the best of my knowledge and belief.