

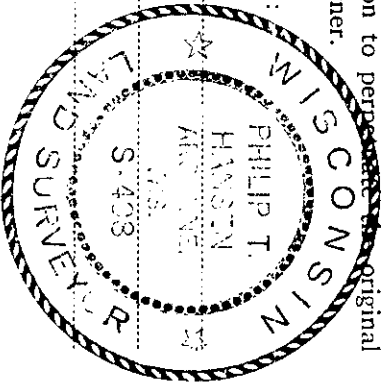
CERTIFIED LAND CORNER RESTORATION

Index No. **R-13**

State of Wisconsin } ss.
 County of Oneida }

I Philip T. Hansen do hereby certify that on the 13th day of April, 1976, I found evidence of the Section corner of 21 - 22 - 27 - 28 Township 36 North, Range 9 East, Fourth Principal Meridian, as described hereon; and that from this evidence I established a new monument and accessories as described hereon to perpetuate the original location of this corner.

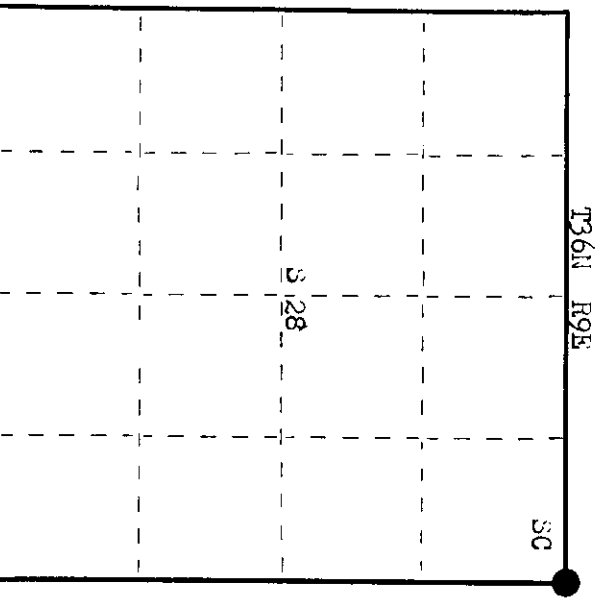
Resident witnesses:
 Glen Barker
 Jim Claflin
 Herb Wagoner



History of original corner establishment: Original Corner established by Wm. E. Dougherty, Deputy Surveyor, in 1863, from which Hemlock 24" bears N 30° W 47 lks, Birch 7" bears S 23° W 55 lks.
 Corner recovered and restored by B.F. Dorr, County Surveyor.
 Corner recovered by Ripco Surveyors, Goddard and crew, in 1961. Set 2" iron pipe with aluminum cap. Marked NBTs - Red Pine 16" S 3° W 69 lks, Red Pine 6" S 84° E 62 lks.

Description of corner evidence found: Recovered 2" iron pipe with aluminum cap stamped. Monument projects 18" above ground.
 recovered OBT - Red Pine 16" (20") S 3° W 69 lks, scribed S 28 T36N R 9E
 Red Pine 6" (12") S 84° E (S 80° E) 62 lks, scribing
 Corner recovered in perfect condition.
 T36N R9E
 21 | 22
 28 | 27
 RIPC

Description of monument and accessories I established to perpetuate the original location of this corner. AS monument was in perfect condition, it was left in place. Marked NBT. Red Pine 10" N 39° E 43.0 lks, scribed SC BT. Distances measured to center of BTs.



○ = Corner monument restored.

Dated at Oneida, Wis. this 22nd day of July, 1976

Signature: *Philip T. Hansen* Title: Registered Land Surveyor Registration No. 5-498
 (County Surveyor, Registered Land Surveyor, or other duly authorized official)

Office of Register of Deeds, County of Oneida. I hereby certify that the within instrument was filed in this office for record on the 3rd day of August, 1976 at 10:20 o'clock A.M.

Signature: *Bone LePage*
 (Register of Deeds)

By: Deputy 3609210000

US PUBLIC LAND SURVEY MONUMENT RECORD

Per Wis. Admin. Code § A-E 7.08, a U.S. public land survey monument record shall be prepared and filed with the county survey records as part of any land survey within 60 days of setting or accepting the corner, which includes or requires the perpetuation, restoration, or use of a U.S. public land survey corner and when any of the situations in Wis. Admin. Code § A-E 7.08(1)(a), (b) or (c) arise.

3(a) Corner Identification:

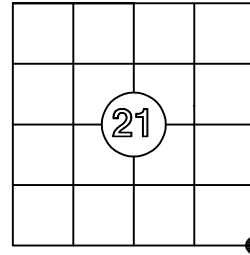
Found iron pipe with an aluminum cap, stamped "RIPCO"
Set by Ripco surveyors, 1961
Southeast Corner
Section 21
Township 36 North
Range 9 East
4th Principal Meridian
Town of Pelican
Oneida Co., WI

Observed Coordinates:

N: 145477.54
E: 275704.43
Datum: NAD83(2011)
GNSS Control: WISCRS VRS
GNSS Method: RTK-Direct
Verification Method: 2

CORNER ID:

3609210000



Establishment of Original Corner

Corner Set: Wood Post
Original Surveyor: Wm. Daugherty
Date of Survey: June, 1863
Hemlock, 24", N 30° W, 47 links
Birch 7", S 23° W, 55 links

The coordinate value has been verified by at least one of the following methods:

1. Comparison to a previously determined GNSS determined published value;
2. The value is the average of two or more GNSS observations at markedly different times;
3. One or more distances were measured to the corner from offset GNSS observed locations, set and observed per No. 2 methods.

3(b)(c)(d)(f)(g)(h)

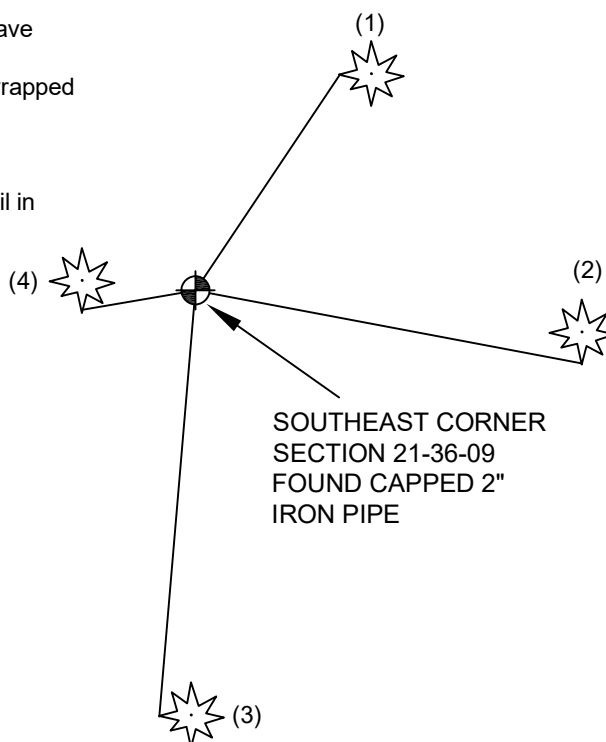
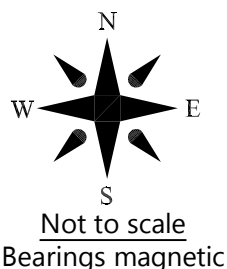
This is a continuation of a previous USPLSS Monument Record by Surveyor Phillip Hansen, S-493 (1976). See previous record for additional history on this corner.

- Hansen's monument record of April 13, 1976 states he found a "RIPCO" aluminum stamped cap on a 2" iron pipe, projecting 18" above ground.
- 1/15/2001 - Todd Loftus, S-1523, finds a RIPCO monument
- 8/27/2001 - Todd Loftus, S-1523, finds a RIPCO monument
- 2/14/2008 - Matt Hogleund, S-1910, finds a 2" capped iron pipe - RIPCO monument
- 3/6/2009 - Devon Vanden Heuvel, S-1795, finds aluminum capped RIPCO monument
- 1/26/2014 - Todd Loftus, S-1523, finds a 2" capped iron pipe
- 2/2/2023 - Todd Loftus, S-1523, finds a 2" capped iron pipe - RIPCO monument
- 5/17/2025 - I, Anthony Jones, S-2508, found the 2" iron pipe with an aluminum cap, stamped RIPCO, as described by Hansen and others. All witnesses are shown below. The monument is 18" above grade, in good condition and stamped to show the location. There is an old barbed wire fence on the ground, running north and south and a 1 1/2" iron pipe 0.3' north. I set a white poly "T" post 0.5' south of the monument.

WITNESS MONUMENT TIES

1. 18" red pine (found): N 33° E, 28.89'. I set a nail in the side of the tree, 6' above grade. Blazes have grown shut.
2. 22" red pine (found): S 79° E, 40.93'. Blazes have grown shut.
3. 26" red pine (found): S 4° W, 44.73'. Tree is wrapped with barbed wire.
4. 6" spruce (made): S 80° W, 11.96'.

Bearings are magnetic and all distances are to a nail in the side of the tree.



3(i) I, Anthony R. Jones, Wisconsin Professional Land Surveyor No S-2508, hereby certify that the corner location shown on this record was determined by me, and that this U.S. Public Land Survey Monument Record is correct and complete to the best of my knowledge and belief.

