

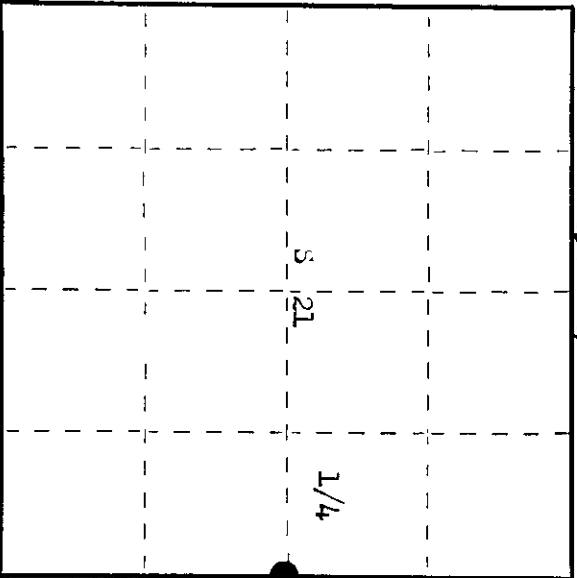
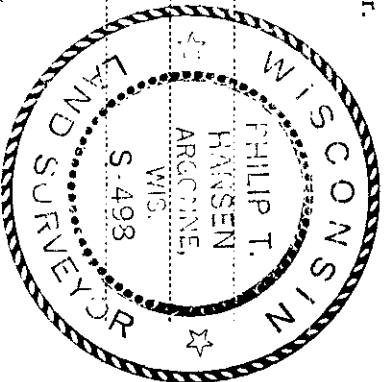
CERTIFIED LAND CORNER RESTORATION

Index No. **P-13**

State of Wisconsin } ss.
 County of Oneida }

I Philip T. Hansen, do hereby certify that on the 9th day of April, 1976, I found evidence of the quarter corner of Section 21 and 22 Township 36 East, Range 9 East, Fourth Principal Meridian, as described hereon; and that from this evidence I established a new monument and accessories as described hereon to perpetuate the original location of this corner.

Resident witnesses:
 Glen Barker
 Jim Claflin
 Herb Wagoner



○ = Corner monument restored.

History of original corner establishment: Original Corner established by B. E. Duggerty, Deputy Surveyor, in 1863, from which Birch 7th bears N 24° W 40 lks and Birch 10th bears S 36° E 29 lks.
 Corner reset by B.F. Dorr, County Surveyor.
 Ripco Surveyor, Goddard, and crew recovered Corner in 1961. Set iron rod in road and a reference Corner 62 lks North. Set iron pipe with aluminum cap for witness monument. Corner is S 20° W 53.5 lks from telephone pole.

Description of corner evidence found: Recovered 2" iron pipe with aluminum cap stamped. Monument projects 24" above ground.
 Unable to locate iron rod in road for 1/4 Corner.
 Recovered point by intersection from witness monument and distance to telephone pole. Bearing to pole is wrong. We measure N 11° W instead of N 20° W. Corrected bearing and distance checks out perfectly.

T36N R9E
 S21 | S22
 Cor. 62 lks. South

Description of monument and accessories I established to perpetuate the original location of this corner. Set a 1 1/2" x 30" iron pipe in blacktop for true corner, 4" below surface of road. as witness corner was in perfect condition, it was left in place.

Corner sets at south edge of River Bend Road.
 N30 - Hi Line Pole, 3609-21 W 28 S 23° W 84 lks.
 Hi Line Pole 3609 -21 R 26 S 80° W 208.7 lks.
 Measured distance to center of poles.

Dated at Rhineland, Wis., this 19th day of July, 1976

Signature: *Philip T. Hansen* Title Registered Land Surveyor Registration No. 3-498
 County Surveyor, Registered Land Surveyor, or other duly authorized official

Office of Register of Deeds, County of Oneida. 23rd day of July, 1976
 Instrument was filed in this office for record on the 23rd day of July, 1976 at 1:00 o'clock P.M.

Debra Venette Kishel
 (Register of Deeds)

By: Deputy

3609212000

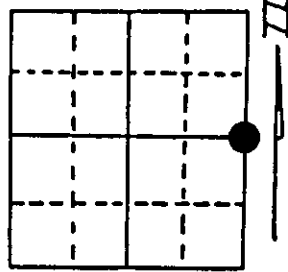
U.S. PUBLIC LAND SURVEY MONUMENT RECORD

Note: This form is intended and designed to fulfill all requirements of Wisconsin Administrative Code, Chapter A-E 7.08 U.S. Public Land Survey Monument Record (3) (a) (b) (c) (d) (e) (f) (g) (h) (i). An additional sheet may be added if necessary to conform with said requirements.

(a) Corner location: Township 36 North
 Range 9 East/West

Town/City/Village Pelican

County Oneida



Section 21

(b) (f) (g) (h) Description of monument found at this corner and if it was accepted, state all evidence (material, testimonial, occupational, plats, records, other monuments) used as a basis for accepting. If not accepted or if nothing was found, state evidence used as basis for establishing location. If reestablished through lost corner proportionate methods, indicate all monuments, distances and directions used to establish. Indicate type of monument found or set and sign post.

1863 - Wm. Daugherty established this corner and set wood post/two BTs:
 7" Birch, N24°W, 40 Links (26.4') 10" Birch, S36°E, 29 Links (19.14')

1900 - B.F. Dorr reset corner.

1961 - Goddard and crew recovered corner and set iron rod for corner with aluminum cap on iron pipe as Witness Corner, North, 62 Links (40.92').

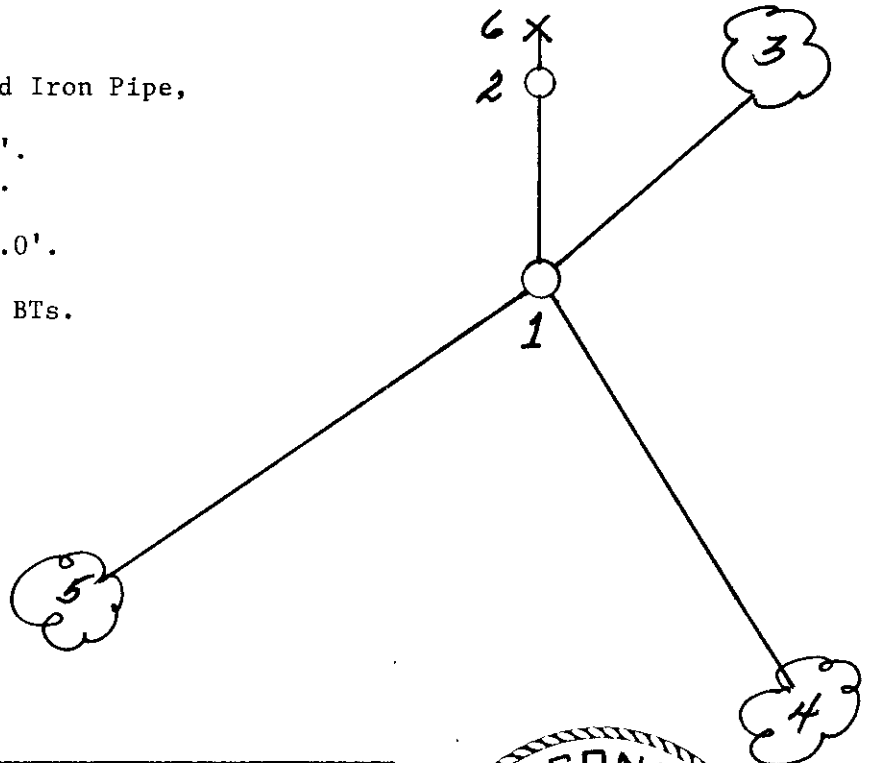
10/18/1982 - Milo E. Stefan found iron rod and made two new BTs:
 12" White Pine, N43°E, 51.88' 6" Jack Pine, S46°W, 72.40'

10/4/1994 - Milo E. Stefan returned to corner - found road resurfaced - rod gone. BT of 1982 okay. Witness Corner okay. We placed a new 2" x 36" aluminum monument 6" below the surface, just south of blacktop, made one new BT and placed plastic sign post.

(c) (d) (e) Plan view of corner with ties to at least 4 witness monuments. If in disagreement with previously established corner, show the distances between the two corners and also indicate the ties to the disputed corner.

- 1) 2" x 36" Aluminum Monument.
- 2) 1" x 24" High Aluminum Capped Iron Pipe, North, 40.92'.
- 3) 12" White Pine, N43°E, 51.88'.
- 4) 6" Jack Pine, S33°E, 104.28'.
- 5) 6" Jack Pine, S46°W, 72.40'.
- 6) Plastic Sign Post, North, 42.0'.

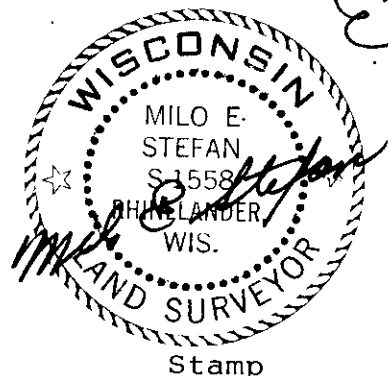
Distances to nail in side of BTs.
 Stump blazes scribed "BT".



(i) Milo E. Stefan
 (type or print name) certify that the corner location on this record was determined by me or under my direction and control and that this U.S. Public Land Survey Monument Record is correct and complete to the best of my knowledge and belief.

Milo E. Stefan
 Signature

10/11/94
 Date



Stamp

Index No. P-13

3609212000

US PUBLIC LAND SURVEY MONUMENT RECORD

Per Wis. Admin. Code § A-E 7.08, a U.S. public land survey monument record shall be prepared and filed with the county survey records as part of any land survey within 60 days of setting or accepting the corner, which includes or requires the perpetuation, restoration, or use of a U.S. public land survey corner and when any of the situations in Wis. Admin. Code § A-E 7.08(1)(a), (b) or (c) arise.

3(a) Corner Identification:

Found 3/8" iron rod and a 1 1/4" iron pipe
East 1/4 Corner
Section 21
Township 36 North
Range 9 East
4th Principal Meridian
Town of Pelican
Oneida Co., WI

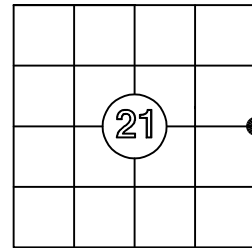
Observed Coordinates:

Found 3/8" iron rod
N: 148193.49
E: 275663.75
Datum: NAD83(2011)
GNSS Control: WISCRS NETWORK
GNSS Method: RTK-Direct
Verification Method: 1, 2

Observed Coordinates:

Found 1 1/4" iron pipe-A-M., Inc., 1997
N: 148193.49 (Δ 0.088')
E: 275666.16 (Δ 0.051')
Published Coordinates:
N: 148193.578
E: 275666.109

**CORNER ID:
3609212000**



History of Original Corner Establishment

Corner Set: Wood Post
Original Surveyor: Wm. Daugherty
Date of Survey: July/August, 1863
Maple 8", N 25° E, 17 links
Maple 10" N 50° W, 23 links

The coordinate value has been verified by at least one of the following methods:

1. Comparison to a previously determined published value;
2. The value is the average of two or more RTK observations at markedly different times;
3. One or more distances were measured to the corner from offset RTK observed locations, set and observed per No. 2 methods.

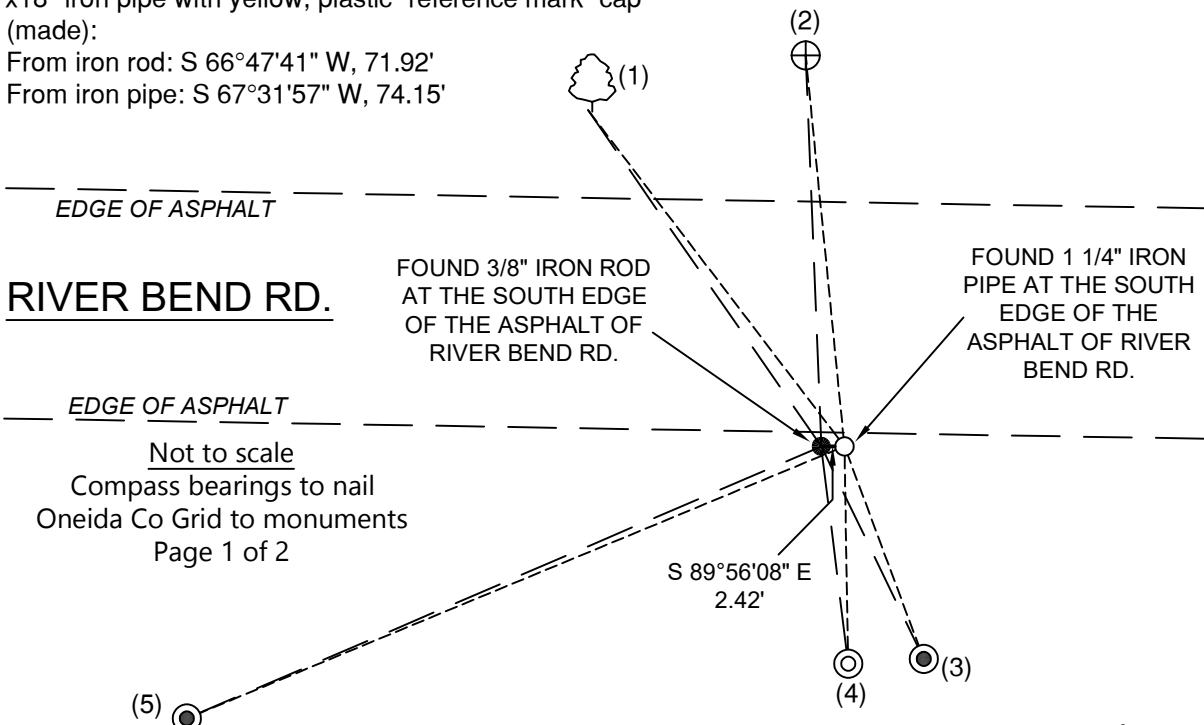
3(b)((c)(d)(f)(g)(h))

This is a continuation of the USPLSS Monument Record by Milo Stefan, S-1558, dated October 11, 1994. See that record for previous information.

See page 2 of 2 for more information

WITNESS MONUMENT TIES

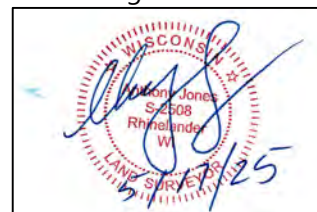
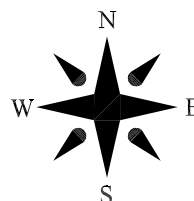
- 1) Nail in 24" white pine (made):
From iron rod: N 34° W , 42.64'
From iron pipe: N 37° W, 44.06'
- 2) Aluminum capped iron pipe (found): *(North, 40.92'-Steffen)*
From iron rod: N 02°16'48" W, 40.77'
From iron pipe: N 05°39'47" W, 40.94'
- 3) 1"x18" iron pipe with yellow, plastic "reference mark" cap (made):
From iron rod: S 25°43'46" E, 24.57'
From iron pipe: S 20°26'42" E, 23.62'
- 4) 1 3/4" iron rod (found)
From iron rod: S 07°03'46" E, 22.80'
From iron pipe: S00°58'53" E, 22.63
- 5) 1"x18" iron pipe with yellow, plastic "reference mark" cap (made):
From iron rod: S 66°47'41" W, 71.92'
From iron pipe: S 67°31'57" W, 74.15'



RIVER BEND RD.

Not to scale
Compass bearings to nail
Oneida Co Grid to monuments
Page 1 of 2

3(i) I, Anthony R. Jones, Wisconsin Professional Land Surveyor No S-2508, hereby certify that the corner location shown on this record was determined by me, and that this U.S. Public Land Survey Monument Record is correct and complete to the best of my knowledge and belief.



US PUBLIC LAND SURVEY MONUMENT RECORD

Per Wis. Admin. Code § A-E 7.08, a U.S. public land survey monument record shall be prepared and filed with the county survey records as part of any land survey within 60 days of setting or accepting the corner, which includes or requires the perpetuation, restoration, or use of a U.S. public land survey corner and when any of the situations in Wis. Admin. Code § A-E 7.08(1)(a), (b) or (c) arise.

CORNER ID:
3609212000

3(a) Corner Identification:

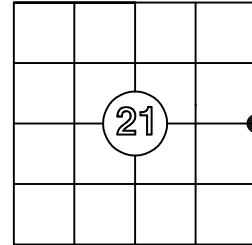
Found 3/8" iron rod and a 1 1/4" iron pipe
East 1/4 Corner
Section 21 Township
36 North Range 9
East
4th Principal Meridian
Town of Pelican
Oneida Co., WI

Observed Coordinates:

Found 3/8" iron rod
N: 148193.49
E: 275663.75
Datum: NAD83(2011)
GNSS Control: WISCRS NETWORK
GNSS Method: RTK-Direct
Verification Method: 2

Observed Coordinates:

Found 1 1/4" iron pipe-
A-M., Inc., 1997
N: 148193.49 (Δ 0.088")
E: 275666.16 (Δ 0.051")
Published Coordinates:
N: 148193.578
E: 275666.109



History of Original Corner Establishment

Corner Set: Wood Post
Original Surveyor: Wm. Daugherty
Date of Survey: July/August, 1863
Maple 8", N 25° E, 17 links
Maple 10" N 50° W, 23 links

The coordinate value has been verified by at least one of the following methods:

1. Comparison to a previously determined published value;
2. The value is the average of two or more RTK observations at markedly different times;
3. One or more distances were measured to the corner from offset RTK observed locations, set and observed per No. 2 methods.

3(b)((c)(d)(f)(g)(h))

This is a continuation of the USPLSS Monument Record by Milo Stefan, S-1558, dated October 11, 1994. See that record for previous information.

- 9/30/1997 - Published data by Oneida Co, per A-M INC., established a coordinate value (shown above) on an "iron pipe".
- 12/8/1999 - Russ Brown, S-2148, found an Oneida County Monument with a found 1" iron pipe, N 88°20'46" E, 2.53'.
- 11/26/2001 - Kip Soder, S-1791, found a 1" iron pipe.
- 6/28/2006 - Todd Loftus, S-1523, found a "subdivisional monument of record".
- 5/5/2008 - Matt Hogle, S-1910, found a 3/8" iron rod, witnessed by a 1 1/2" iron pipe, S 87°41'20" E, 2.41'
- 5/13/2008 - Matt Hogle, S-1910, found a 3/8" iron rod and used it to set an aluminum monument for the meander corner on the right bank of the Pelican River. See the USPLSS monument record for more information.
- 11/08/2017 - Jon Bandow, S-2731, found an Oneida County Monument.
- 9/4/2018 - Todd Loftus, S-1523, found a "subdivisional monument", per C.S.M. 4759.
- 7/8/2024 - Todd Loftus, S-1523 found an Oneida County Monument.
- 5/17/2025 - I, Anthony R. Jones, S-2508, did not find the Oneida County monument set by Stefan in 1994. I did recover a 3/8" iron rod, found by Hogle in 2008 and used on his USPLSS Monument Record to set the meander corner to the north. I also recovered a 1 1/4" iron pipe, S 89°56'08" E, 2.42', used by Soder in 2001. I tied to the CW 1/16, a 1 1/4" iron pipe as shown on his map (A1092) and matched his distance. I did not find any records of how either was set. I have shown my observed Oneida County coordinates for both markers. I recommend more research and field work be done to determine which is the proper monument. There may be deeds that use the rod and other that may use the pipe. The 12" white pine, N 43° E, 51.88' is gone and the area is now a driveway. I found the 6" jack pine, S 45° W, 104.28', but it is no longer a viable tie, unless some tree clearing is done. I did not find the 6" jack pine, S 46° W, 72.40'. The plastic sign post is still in place by the aluminum capped pipe to the north.

3(i) I, Anthony R. Jones, Wisconsin Professional Land Surveyor No S-2508, hereby certify that the corner location shown on this record was determined by me, and that this U.S. Public Land Survey Monument Record is correct and complete to the best of my knowledge and belief.

