

U.S. PUBLIC LAND SURVEY MONUMENT RECORD

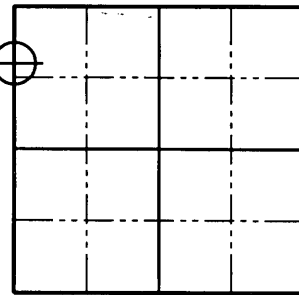
NOTE: This form is intended and designed to fulfill all requirements of Wisconsin Administrative Code, Chapter A-E 7 .08 U.S. Public Land Survey Monument Record (3)(a)(b)(c)(d)(e)(f)(g)(h)(i). An additional sheet may be added if necessary to conform with said requirements.

(a) Corner location: Township 36 North
 Range 9 East/West

Town of Pelican

County of Oneida

M.C.
 South side
 of River



Section 22

(b)(f)(g)(h) Description of monument found at this corner and if it was accepted, state all evidence (material, testimonial, occupation, plats, records, other monuments) used as a basis for accepting. If not accepted or if nothing was found, state evidence used as a basis for establishing location. If reestablished through lost corner proportionate methods, indicate all monuments, distances and directions used to establish. Indicate type of monument found or set and sign post.

July/August 1863 – William E. Daugherty set Meander Post on right bank of Pelican River; BT's: 12" Maple, S17°E, 34 lks.

March 21, 1910 – D.H. Vaughan ran North from W 1/4 Post 40.90 Chains and fell 1.29 Chains East of Northwest Corner. He set Meander Corner on right bank of the Pelican River at 29.55 Chains North of W 1/4 Post; BT's: 12" Maple, N20°E, 2 lks.; 12" Hemlock, S11°W, 16-1/2 lks.

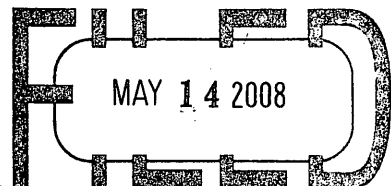
November 8, 2006 – Todd Loftus set a 1" iron pipe for the Meander Corner 5' South of the shore of the Pelican River.

December, 13 2006 – Matthew E. Høglund found the 1" iron pipe set by Loftus. We surveyed to the Northwest Section corner and West 1/4 Corner of Section 21 and found that the 1" iron pipe was set 1.35' West of the Section line. We set an Oneida County Aluminum Monument on the Section line 29'± South of the Pelican River and witnessed the corner as shown on Sheet 2 hereof.

(c)(d)(e) Plan view of corner with ties to at least 4 witness monuments. If in disagreement with previously established corner, show the distances between the two corners and also indicate the ties to the disputed corner.

See Sheet 2 hereof

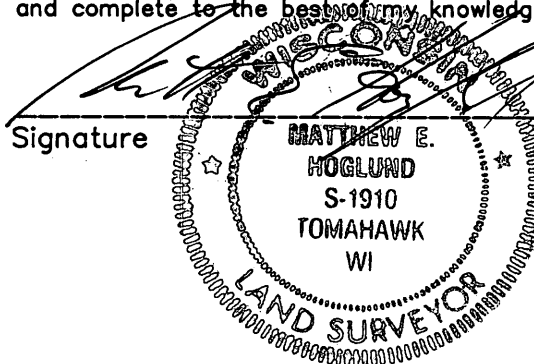
REGISTER OF DEEDS OFFICE
 ONEIDA COUNTY, WIS.



(i) I, Matthew E. Høglund, certify that the corner location on this record was determined by me under my direction and control At _____ O'Clock _____ M and that this U.S. Public Land Survey Monument is correct and complete to the best of my knowledge and belief.

THOMAS H. LEIGHTON
 REGISTER OF DEEDS

Signature



5/13/2008
 Date

3609213200

Sheet 1 of 2





Index No. N/0-13

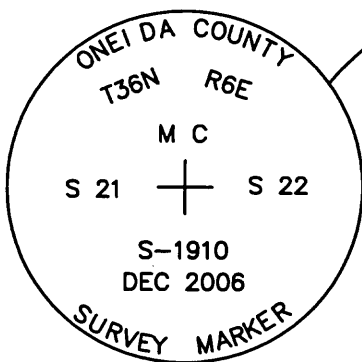
U.S. PUBLIC LAND SURVEY MONUMENT RECORD



All bearings are referenced to the West line of the NW 1/4 of Section 22 recorded as bearing $N00^{\circ}31'39''W$ on the Oneida County Coordinate System.

Legend

-  Found Oneida County Aluminum Monument
-  Set Oneida County Aluminum Monument
-  Found 3/8" Iron Rod
-  Found 1" Iron Pipe Corner set per Loftus



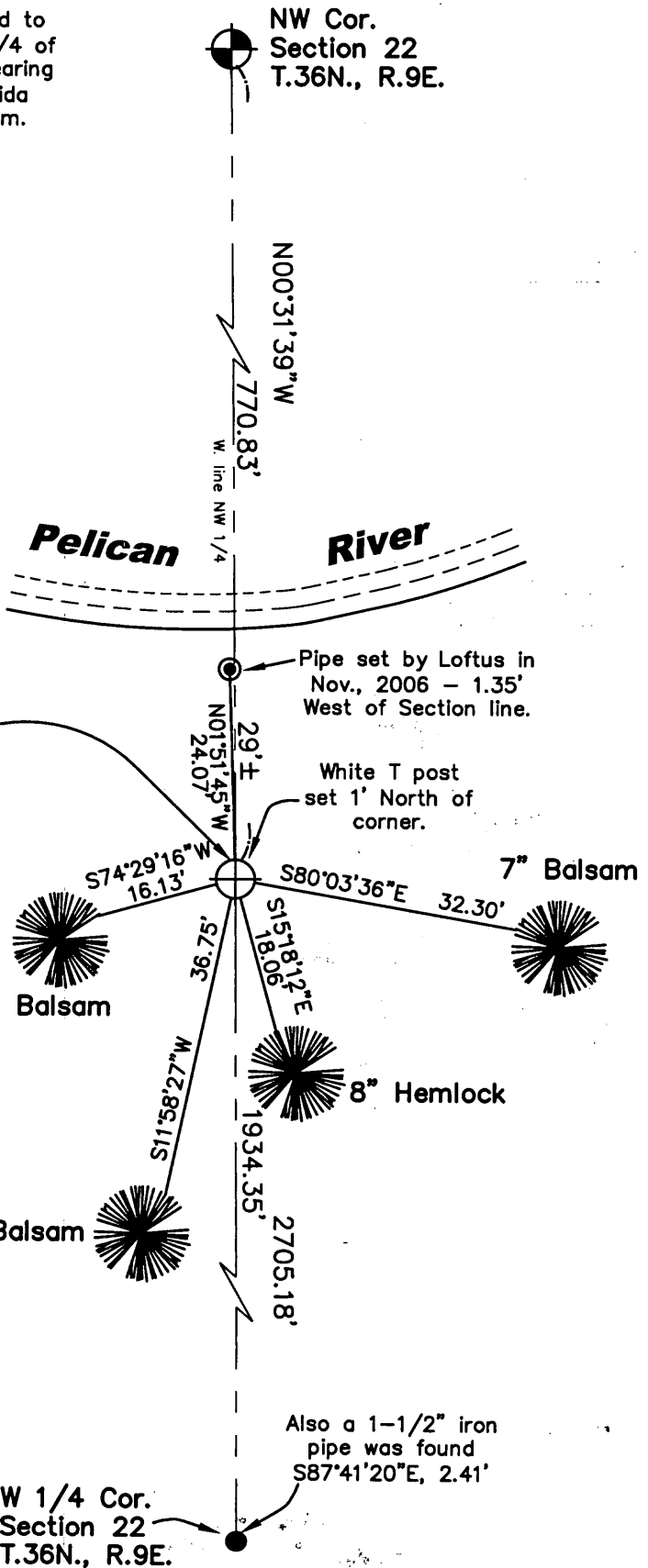
Note

All trees were blazed with 60 P nail set in side of tree and a BT Sign placed on face of tree.

GRAPHIC SCALE



(IN FEET)

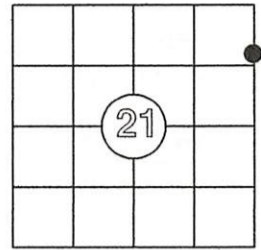


US PUBLIC LAND SURVEY MONUMENT RECORD

Per Wis. Admin. Code § A-E 7.08, a U.S. public land survey monument record shall be prepared and filed with the county survey records as part of any land survey within 60 days of setting or accepting the corner, which includes or requires the perpetuation, restoration, or use of a U.S. public land survey corner and when any of the situations in Wis. Admin. Code § A-E 7.08(1)(a), (b) or (c) arise.

3(a) Corner Identification:

Found aluminum capped monument	Observed Coordinates:
Set by Hoglund (5/13/08)	N: 150128.05
Meander Corner	E: 275645.91
Section 21	Datum: NAD83(2011)
Township 36 North	GNSS Control: WISCRS NETWORK
Range 9 East	GNSS Method: RTK-Direct
4th Principal Meridian	Verification Method: 1
Town of Pelican	
Oneida Co., WI	



CORNER ID:
3609213200

The coordinate value has been verified by at least one of the following methods: 1) comparison to a previously GNSS determined published value; 2) The value is the average of two or more GNSS observations at markedly different times; 3) one or more distances were measured to the corner from temporary GNSS observed offset locations.

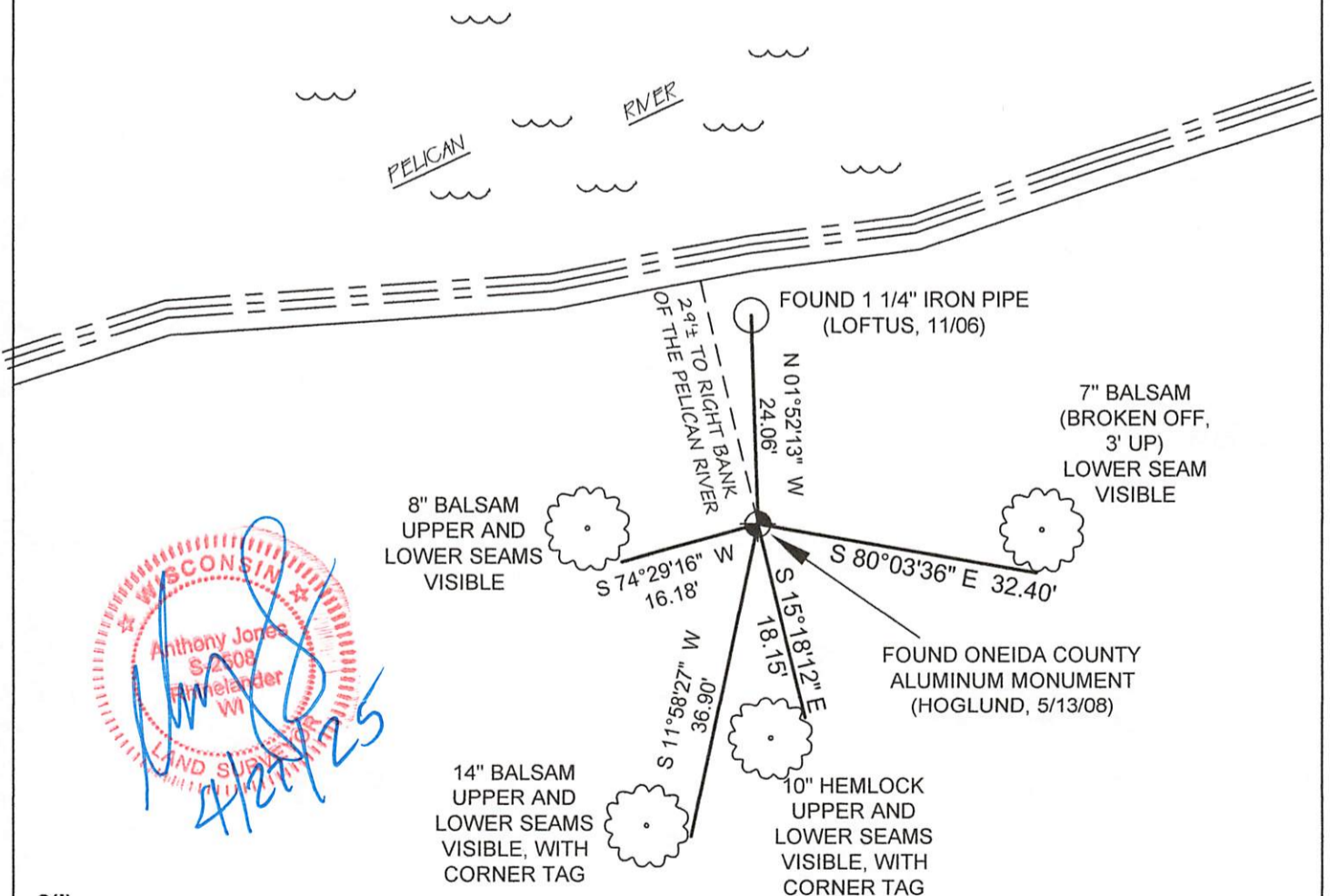
History of Original Corner Establishment

Corner Set: Wood Post
Original Surveyor: Wm. Daugherty
Date of Survey: July/August, 1863
Maple 12", S 17° E, 34 links
(No other tree near)

3(b)(c)(d)(f)(g)(h)

This is a continuation of a previous USPLSS Monument Record by Surveyor Matt Hoglund, S-1910 (2008). See previous record for additional history on this corner.

4/27/2025 - I, Anthony Jones, S-2508, found Hoglund's aluminum monument in good condition, 29'± south of the right bank of the Pelican River. I found all witness is good condition as shown below. The 7" balsam, S 80°03'36" E has snapped off, 4 feet above ground, but the nail is in good condition. Bearings below are from Hoglund's monument record. Distances were re-measured.



Anthony Jones
S-2508
Finnelander
WI
LAND SURVEYOR

3(i)

I, Anthony R. Jones, Wisconsin Professional Land Surveyor No S-2508, hereby certify that the corner location shown on this record was determined by me, or under my direction or control, and that this U.S. Public Land Survey Monument Record is correct and complete to the best of my knowledge and belief.



Bearings: Grid
Scale: 1"=20' Index No. _____