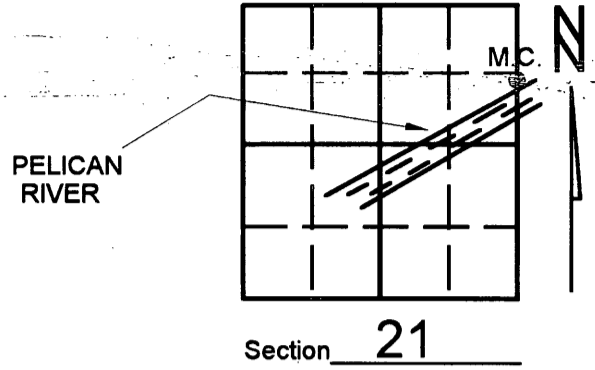


U.S. PUBLIC LAND SURVEY MONUMENT RECORD

Note: This form is intended and designed to fulfill all requirements of Wisconsin Administrative Code, Chapter A-E 7.08 U.S. Public Land Survey Monument Record (3)(a)(b)(c)(d)(e)(f)(g)(h)(i). An additional sheet may be added if necessary to conform with said requirements.

(a) Corner location: Township 36 North
 Range 09 (East) West

Town/City/Village PELICAN
 County ONEIDA



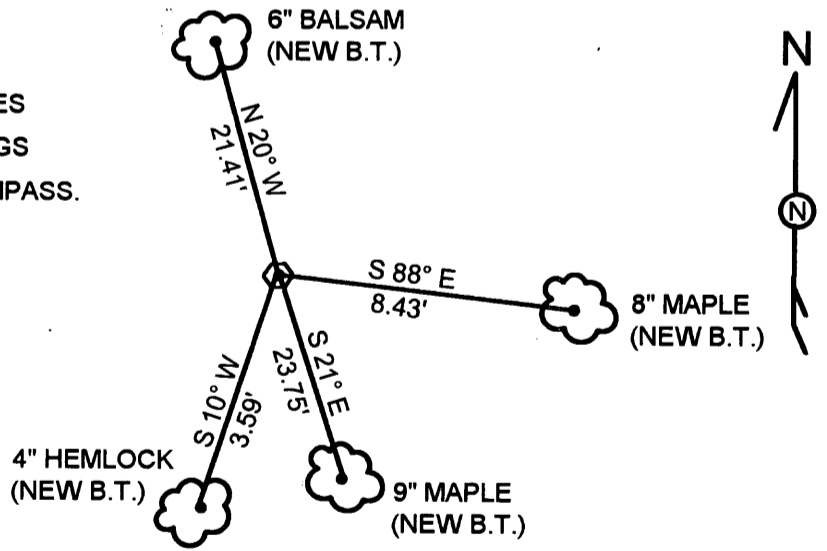
(b) (f) (g) (h) Description of monument found at this corner and if it was accepted, state all evidence (material, testimonial, occupational, plats, records, other monuments) used as a basis for accepting. If not accepted or if nothing was found, state evidence used as basis for establishing location. If reestablished through lost corner proportionate methods, indicate all monuments, distances and directions used to establish. Indicate type of monument found or set and sign post.

-1863- WILLIAM E. DAUGHTERY SET M.C. POST AND MADE THE FOLLOWING B.T.s:
 8" MAPLE, N 25° E, 17 LINKS, 10" MAPLE, N 50° W, 23 LINKS.

- 1999 - KEVIN BIXBY SET ONEIDA COUNTY MONUMENT ESTABLISHING NEW MEANDER CORNER AND WITNESS AS SHOWN BELOW. WHILE DIGGING THE MONUMENT IN, WE DID RECOVER SOME REMAINS OF OLD BARBED-WIRE FENCING.

(c) (d) (e) Plan view of corner with ties to at least 4 witness monuments. If in disagreement with previously established corner, show the distances between the two corners and also indicate the ties to the disputed corner.

NOTE: DISTANCES MEASURED TO 60 PENNY SPIKES SET IN BASE OF TREE. NO SCALE. BEARINGS TAKEN WITH A HAND-HELD MAGNETIC COMPASS. (SEE SHEET NO. 2). WHITE PLASTIC POST SET 1.00 FOOT NORTH OF CORNER. CORNER IS STAMPED AS SHOWN BELOW.



(i) I, KEVIN P. BIXBY
 (type or print name) certify that the corner location on this record was determined by me or under my direction and control and that this U.S. Public Land Survey Monument Record is correct and complete to the best of my knowledge and belief.



Index No. N-013

Kevin P. Bixby
 Signature Date 02/04/00

SHEET 1 OF 2

Stamp

~~3609212800~~
 3609213400

NE CORNER
SECTION 21

625.46'

M.C.

PELICAN RIVER

2705.48'

2080.02'

N 3°15'10" W

EAST 1/4
SECTION 21

BEARINGS REFERENCED TO THE EAST LINE OF
SECTION 21, T36N, R9E, ASSUMED TO BEAR
N 3°15'10" W.



Kevin P. Bixby

KEVIN P. BIXBY
R.L.S. 2343

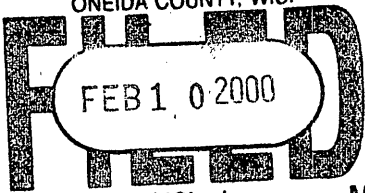


LEGEND

-  FOUND ONEIDA COUNTY MONUMENT
-  SET AND STAMPED ONEIDA COUNTY MONUMENT

NO SCALE

REGISTER OF DEEDS OFFICE
ONEIDA COUNTY, WIS.



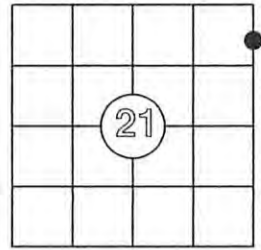
At _____ O'Clock _____ M
THOMAS H. LEIGHTON
REGISTER OF DEEDS

US PUBLIC LAND SURVEY MONUMENT RECORD

Per Wis. Admin. Code § A-E 7.08, a U.S. public land survey monument record shall be prepared and filed with the county survey records as part of any land survey within 60 days of setting or accepting the corner, which includes or requires the perpetuation, restoration, or use of a U.S. public land survey corner and when any of the situations in Wis. Admin. Code § A-E 7.08(1)(a), (b) or (c) arise.

3(a) Corner Identification:

Found aluminum capped monument	Observed Coordinates:
Set by Bixby in 2000	N: 150273.59
Meander Corner	E: 275644.01
Section 21	Datum: NAD83(2011)
Township 36 North	GNSS Control: WISCRS NETWORK
Range 9 East	GNSS Method: RTK-Direct
4th Principal Meridian	Verification Method: 1
Town of Pelican	
Oneida Co., WI	



CORNER ID:
3609213400

History of Original Corner Establishment

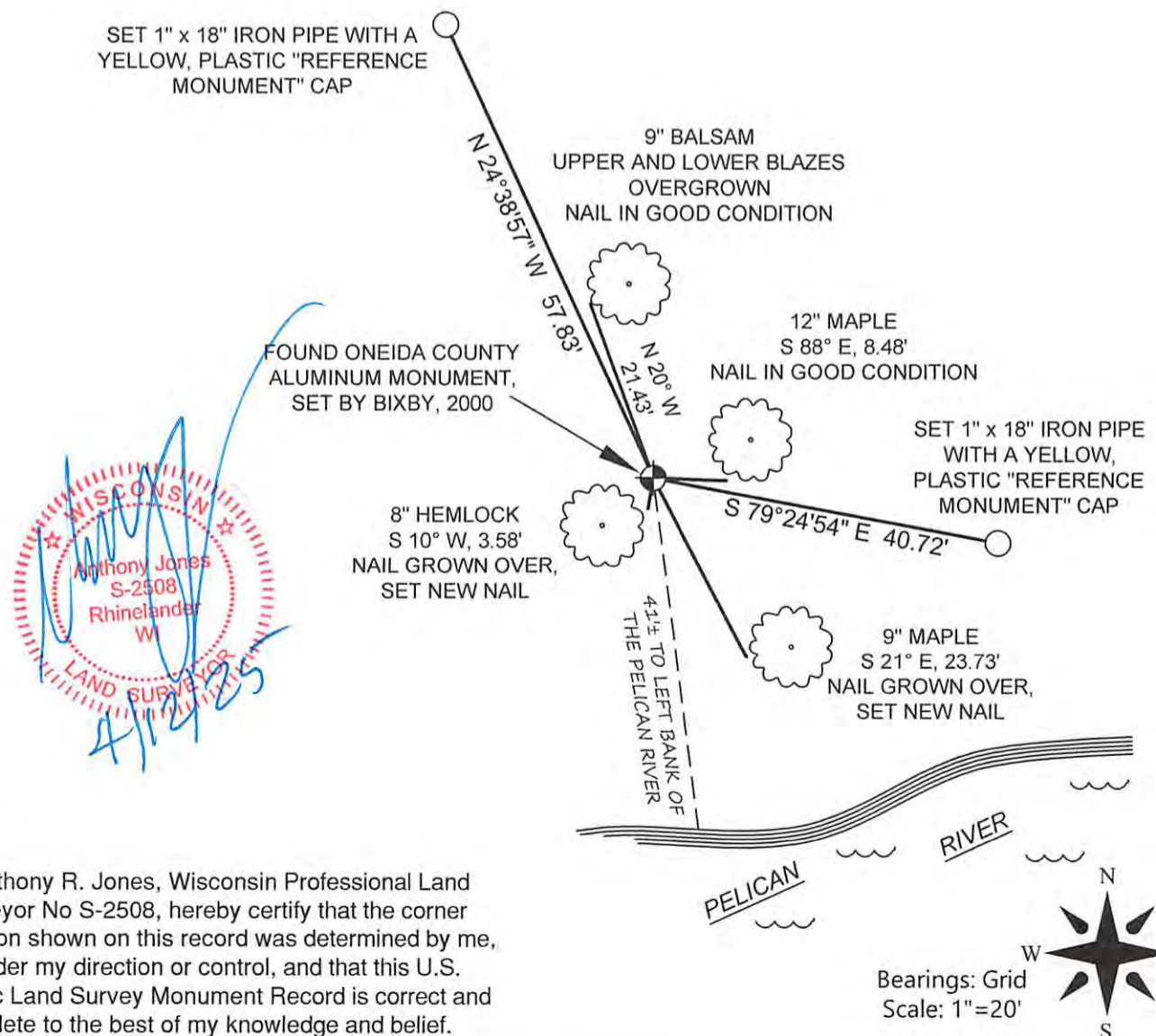
Corner Set: Wood Post
Original Surveyor: Wm. Daugherty
Date of Survey: July/August, 1863
Maple 8", N 25° E, 17 links
Maple 10" N 50° W, 23 links

The coordinate value has been verified by at least one of the following methods: 1) comparison to a previously GNSS determined published value; 2) The value is the average of two or more GNSS observations at markedly different times; 3) one or more distances were measured to the corner from temporary GNSS observed offset locations.

3(b)(c)(d)(f)(g)(h)

This is a continuation of a previous USPLSS Monument Record by Surveyor Kevin Bixby, S-2343 (2000). See previous record for additional history on this corner.

4/12/2025 - I, Anthony Jones, S-2508, found Bixby's aluminum monument in good condition, 41'± north of the left bank of the Pelican River. I found all witness is good condition and set two new 1" x 18" iron pipes with yellow, plastic "reference mark" caps, as shown below. I set new nails above the overgrown nails, as shown below. Magnetic bearings and distances are to the nails.



3(i)

I, Anthony R. Jones, Wisconsin Professional Land Surveyor No S-2508, hereby certify that the corner location shown on this record was determined by me, or under my direction or control, and that this U.S. Public Land Survey Monument Record is correct and complete to the best of my knowledge and belief.