

US PUBLIC LAND SURVEY MONUMENT RECORD

Per Wis. Admin. Code § A-E 7.08, a U.S. public land survey monument record shall be prepared and filed with the county survey records as part of any land survey within 60 days of setting or accepting the corner, which includes or requires the perpetuation, restoration, or use of a U.S. public land survey corner and when any of the situations in Wis. Admin. Code § A-E 7.08(1)(a), (b) or (c) arise.

3(a) Corner Identification:

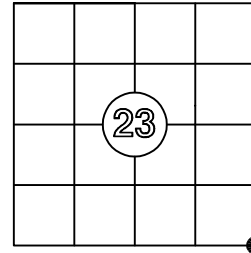
Found Oneida County
aluminum monument
Southeast Corner
Section 23
Township 36 North
Range 9 East
4th Principal Meridian
Town of Pelican
Oneida Co., WI

Observed Coordinates:

N: 146132.55
E: 286834.23
Datum: NAD83(2011)
GNSS Control: WISCRS VRS
GNSS Method: RTK-Direct
Verification Method: 2

CORNER ID:

3609230000



Establishment of Original Corner

Corner Set: Wood Post
Original Surveyor: Wm. Daugherty
Date of Survey: June, 1863
Birch 7": S 28°E, 8 lks
Birch 8": N 40° W, 14 links

The coordinate value has been verified by at least one of the following methods:

1. Comparison to a previously determined GNSS determined published value;
2. The value is the average of two or more GNSS observations at markedly different times;
3. One or more distances were measured to the corner from offset GNSS observed locations, set and observed per No. 2 methods.

3(b)(c)(d)(f)(g)(h)

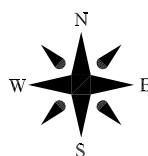
This is a continuation of a previous USPLSS Monument Record by Surveyor Milo Stefan, S-1558 (1992). See previous record for additional history on this corner.

- 2/28/1992 - Stefan's monument record of February 28, 1992 states he set an aluminum Oneida County monument.
- 4/30/2003 - Kevin Bixby, S-2343, notes he found an Oneida County aluminum monument.
- 1/6/2005 - Albert Simpson, S-1792, notes he found the Southeast section corner.
- 5/14/2025 - I, Anthony Jones, S-2508, found the Oneida County aluminum monument, set by Stefan. All witnesses are shown below. The monument is 6" above grade, in good condition and stamped to show the corner location.

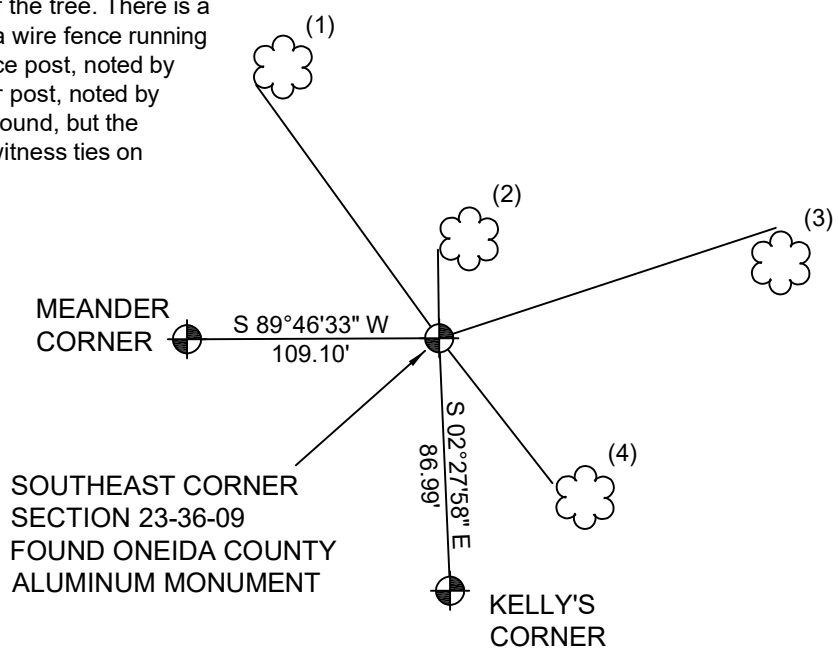
WITNESS MONUMENT TIES

1. 8" red oak (found): N 47° W, 30.54'. I set a nail in the side of the tree. Blazes have grown shut.
2. 14" red maple (made): N 03° E, 5.52'. I set a nail in the side of the tree.
3. 8" red maple (found): N 62° E, 34.77'. Lower blaze has grown shut. I set a nail in the side of the tree.
4. 8" red oak (found): S 38° E, 19.15'. I set a nail in the side of the tree in a seam.

All distances are to a nail in the side of the tree. There is a white guard post 0.2' south. There is a wire fence running south past Kelly's monument. The fence post, noted by Rohde, is in poor condition. The cedar post, noted by Kelly is in fair condition, lying on the ground, but the scribing is visible. I did not check the witness ties on Kelly's record.



Not to scale
Bearings to nails: magnetic
Bearings to other monuments: Grid



3(i) I, Anthony R. Jones, Wisconsin Professional Land Surveyor No S-2508, hereby certify that the corner location shown on this record was determined by me, and that this U.S. Public Land Survey Monument Record is correct and complete to the best of my knowledge and belief.

