

U.S. PUBLIC LAND SURVEY MONUMENT RECORD

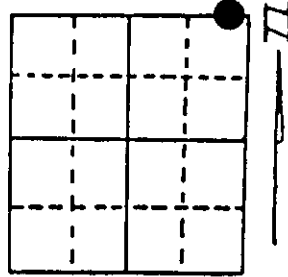
Note: This form is intended and designed to fulfill all requirements of Wisconsin Administrative Code, Chapter A-E 7.08 U.S. Public Land Survey Monument Record (3) (a) (b) (c) (d) (e) (f) (g) (h) (i). An additional sheet may be added if necessary to conform with said requirements.

(a) Corner location: Township 36 North

Range 9 East/West

Town/City/Village Pelican Lake

County Oneida



Section 26

(b) (f) (g) (h) Description of monument found at this corner and if it was accepted, state all evidence (material, testimonial, occupational, plats, records, other monuments) used as a basis for accepting. If not accepted or if nothing was found, state evidence used as basis for establishing location. If reestablished through lost corner proportionate methods, indicate all monuments, distances and directions used to establish. Indicate type of monument found or set and sign post.

1863 - Wm. Daugherty established this corner at 1.71 Chains on East Bank of Pelican River and made BTs:

8" Birch, S8°E, 28 Links (18.48') 16" W. Pine, N66°E, 21 Links (13.86')

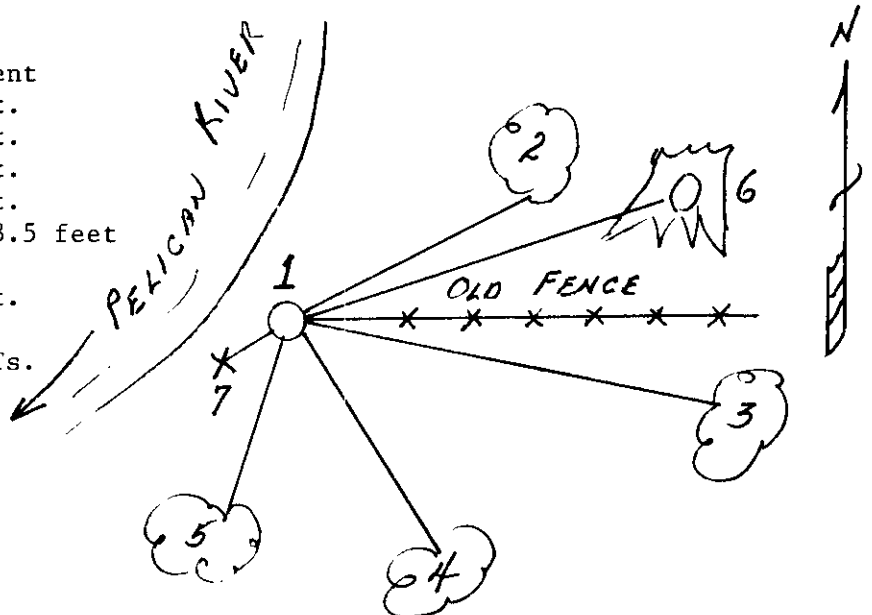
1924 - Vaughan called corner at 1.71 Chains West of Section Corner when he ran to Quarter Corner to West.

2/11/1992 - Milo E. Stefan found fallen scribed post with location poster attached by Lawrence, 1947. As our distance to the Section Corner Easterly was short by 5'-7', we concluded that the distances to the two original BTs have been reversed. If the 28 Links is given to the Pine BT, we find the distance to the Section Corner conforms to the original notes exceedingly well. We monumented the fallen post position.

(c) (d) (e) Plan view of corner with ties to at least 4 witness monuments. If in disagreement with previously established corner, show the distances between the two corners and also indicate the ties to the disputed corner.

- 1) 2" x 30" aluminum county monument
- 2) 6" White Ash, N65°E, 16.91 feet.
- 3) 8" Red Maple, S82°E, 41.86 feet.
- 4) 6" Red Maple, S41°E, 34.38 feet.
- 5) 6" Red Maple, S11°W, 10.70 feet.
- 6) 18" White Pine Stump, N66°E, 18.5 feet with over-growth on BT blaze.
- 7) Plastic sign post, SW, 1.0 feet.

Distances to nail in side of BTs.
Stump blaze scribed "BT".



(i) I, Milo E. Stefan
(type or print name) certify that the corner location on this record was determined by me or under my direction and control and that this U.S. Public Land Survey Monument Record is correct and complete to the best of my knowledge and belief.

Milo E. Stefan
Signature

2/28/92
Date



Index No. R-20, 21

3609230003

Stamp

US PUBLIC LAND SURVEY MONUMENT RECORD

Per Wis. Admin. Code § A-E 7.08, a U.S. public land survey monument record shall be prepared and filed with the county survey records as part of any land survey within 60 days of setting or accepting the corner, which includes or requires the perpetuation, restoration, or use of a U.S. public land survey corner and when any of the situations in Wis. Admin. Code § A-E 7.08(1)(a), (b) or (c) arise.

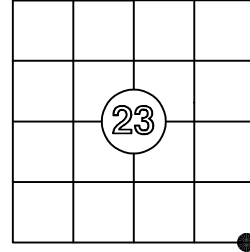
3(a) Corner Identification:

Found Oneida County
aluminum monument
Meander Corner
Section 23
Township 36 North
Range 9 East
4th Principal Meridian
Town of Pelican
Oneida Co., WI

Observed Coordinates:

N: 146132.12
E: 286725.14
Datum: NAD83(2011)
GNSS Control: WISCRS VRS
GNSS Method: RTK-Direct
Verification Method: 2

CORNER ID:
3609230003



Establishment of Original Corner

Corner Set: Wood Post
Original Surveyor: Wm. Daugherty
Date of Survey: June, 1863
Birch 8": S 8° E, 28 links
White pine 16", N 66° E, 21 links

The coordinate value has been verified by at least one of the following methods:

1. Comparison to a previously determined GNSS determined published value;
2. The value is the average of two or more GNSS observations at markedly different times;
3. One or more distances were measured to the corner from offset GNSS observed locations, set and observed per No. 2 methods.

3(b)(c)(d)(f)(g)(h)

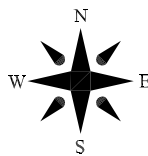
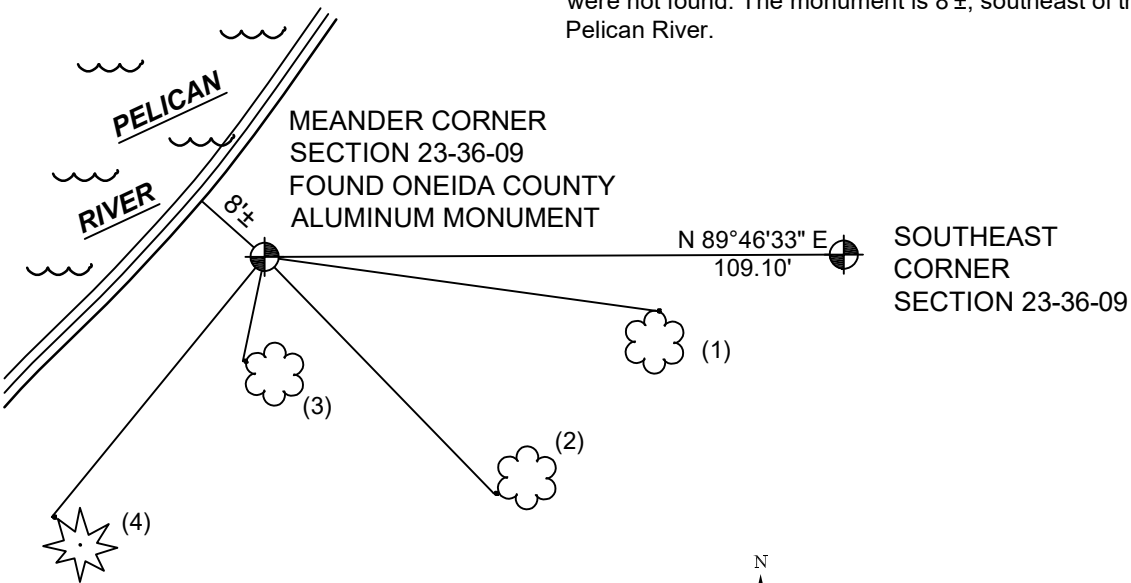
This is a continuation of a previous USPLSS Monument Record by Surveyor Milo Stefan, S-1558 (1992). See previous record for additional history on this corner.

- 2/28/1992 - Stefan's monument record of February 28, 1992 states he set an aluminum Oneida County monument.
- 1/6/2005 - Albert Simpson, S-1792, notes he found the Southeast section corner.
- 5/14/2025 - I, Anthony Jones, S-2508, found the Oneida County aluminum monument, set by Stefan. All witnesses are shown below. The monument is 4" above grade and stamped to show the corner location.

WITNESS MONUMENT TIES

1. 8" red maple (found): S 82° E, 41.22'. I set a nail in the side of the tree. Blazes have grown shut.
2. 9" red maple (found): S 41° E, 34.42'. I found the nail in good condition. Blazes have grown shut.
3. 11" red maple (found): S 11° W, 10.80'. The nail is overgrown and the blazes have grown shut. I set a new nail.
4. 6" spruce (made): S 40° W, 35.13'. I set a new nail in the side of the tree and made an upper and lower blaze facing the corner.

There is a white guard post 1' southwest. I did not see the old fence, noted by Stefan. Stefan's witnesses, 2 and 6, were not found. The monument is 8'±, southeast of the Pelican River.



Not to scale
Bearings to nails: magnetic
Bearings to other monuments: Grid

3(i) I, Anthony R. Jones, Wisconsin Professional Land Surveyor No S-2508, hereby certify that the corner location shown on this record was determined by me, and that this U.S. Public Land Survey Monument Record is correct and complete to the best of my knowledge and belief.

