

This form is intended to fulfill the requirements of Chapter A-E 7.08 (3)(a) thru (i) U.S. Public Land Survey Monument Location Record, Wisconsin Administrative Code. Use the reverse side of form for continuation.

**U.S. PUBLIC LAND SURVEY MONUMENT LOCATION RECORD**

USPLS CORNER: SOUTH WITNESS MC SECTION: 5 TOWNSHIP: 36 NORTH RANGE: 10 EAST  
 NAME OF WATERWAY FOR M.C. CORNER : FOURTH LAKE SECTION LINE: WEST  
 (CITY)(VILLAGE)(TOWN) OF: PELICAN COUNTY OF: ONEIDA

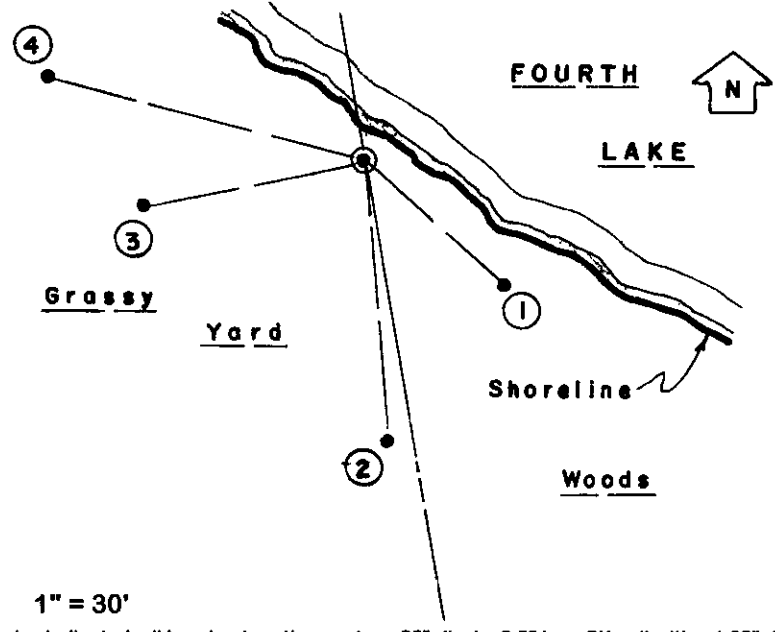
Description of monument found or placed and all other evidence used as the basis for monument location; including monuments and related measurements required if the corner location was reestablished by lost corner proportionate methods. Also indicate name of original surveyor, original survey date and the corner monument, bearing trees, witness or other reference monuments established; including measured bearing and distance ties, from available records.

Found and accepted an older 1.25" dia. galvanized iron pipe with coupling at top nearly flat to SW, undoubtedly due to lake ice over many years. I carefully excavated and removed the 30" long iron pipe which revealed the original plumb soil cavity below grade, into which I drove a standard 2" dia. by 30" long aluminum pipe monument with split bottom end and stamped Oneida cap to 2" above grassy improved lake frontage lot with older cottage; the corner falls 4'+/- South of lake shoreline this date and is accessible via private driveway from West dead end of Cottage Road to Fire No. 3358. No standard white poly 'T' marker post was set at the request of adjacent owner William Gobetz, who promptly tied up his pontoon boat to the new monument set !!

No MC post had been set by original GLO survey in 1863, as Fourth Lake inundation by dam impoundment occurred at a later date. In 1913, D.H. Vaughan ran the west line of Section 5 South over then Fourth Lake and set a witness MC post on the South shore of the lake, also noted to be 4.20 chains North of the SW corner of Section 5 and only marked a 12" Bw BT, now gone, S31°W 38 links as no others noted near, all per his field notes and Plat of Survey filed as B-2350 in Oneida County survey records.

In May 1950, Keith M. Hall/RLS 594 shows an iron pipe symbol at this corner per Plat of Survey L-1069 filed in Oneida County survey records. In September 1971, Genisot & Associates, Inc. of Rhinelander, Wisconsin prepared Plat of Survey L-748, filed in Oneida County survey records, which I used to further verify this corner location by taped measurements from iron lot corner pipes found southeasterly along the lake shoreline.

Plan view map of monument location with bearing and distance ties to a minimum of four(4) described witness or reference monuments of concrete, natural stone, iron, live bearing trees or equivalent material. If applicable, also show a minimum of two(2) bearing and distance ties to any other monument found and not accepted; including the bearing and distance from the accepted monument.



- WITNESS MONUMENT TIES:**
- ① New 3.5" Fir BT S47°E 29.51'.
  - ② New 8.5" Bw BT S05°E 44.39'.
  - ③ New 7" twin Mr BT S78°W 35.07'.
  - ④ New 6" Fir BT N75°W 49.95'.
- This recovery completed on May 16, 2002 and was directly witnessed by adjacent owner William Gobetz and 3 visiting friends unnamed.

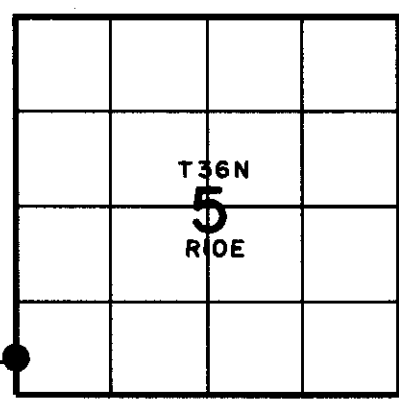
SCALE: 1" = 30'

Unless otherwise indicated, all bearing tree ties are to a .25" dia. by 2.5" long PK nail with a 1.25" dia. steel washer driven into unblazed right face and a .25" dia. by 2.5" long PK nail with a 2" dia. steel washer stamped BT is also driven into unblazed face of bearing tree at DBH; the basis for measured bearings is by compass to nearest degree and all tie distances are measured horizontal by steel tape corrected to nearest 1/100th feet at standard temperature of 68° F.



**LAND SURVEYOR CERTIFICATE:**  
 I, William C. Rohde, hereby certify that I am duly licensed as a Professional Land Surveyor in the State of Wisconsin; that this USPLS monument location was determined by me and/or under my direct supervision and control; and that this U.S. Public Land Survey Monument Location Record is true and correct to the best of my knowledge and belief.

Signed: *William C. Rohde*  
 William C. Rohde RLS 841



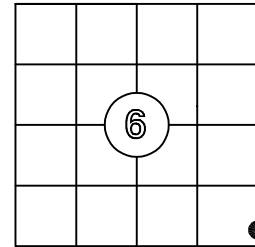
3610060300

# US PUBLIC LAND SURVEY MONUMENT RECORD

Per Wis. Admin. Code § A-E 7.08, a U.S. public land survey monument record shall be prepared and filed with the county survey records as part of any land survey within 60 days of setting or accepting the corner, which includes or requires the perpetuation, restoration, or use of a U.S. public land survey corner and when any of the situations in Wis. Admin. Code § A-E 7.08(1)(a), (b) or (c) arise.

**3(a) Corner Identification:**      Observed Coordinates:  
 Found Aluminum                      N: 162421.92  
 Oneida Co monument                E: 297622.33  
 South Witness MC                    Datum: NAD83(2011)  
 Section 6                                GNSS Control: WISCRS  
 Township 36 North                    NETWORK  
 Range 10 East                        GNSS Method: RTK-Direct  
 4th Principal Meridian              Verification Method: 2  
 Town of Pelican  
 Oneida Co., WI

**CORNER ID:**  
**3610060300**



**Establishment of Original Corner**

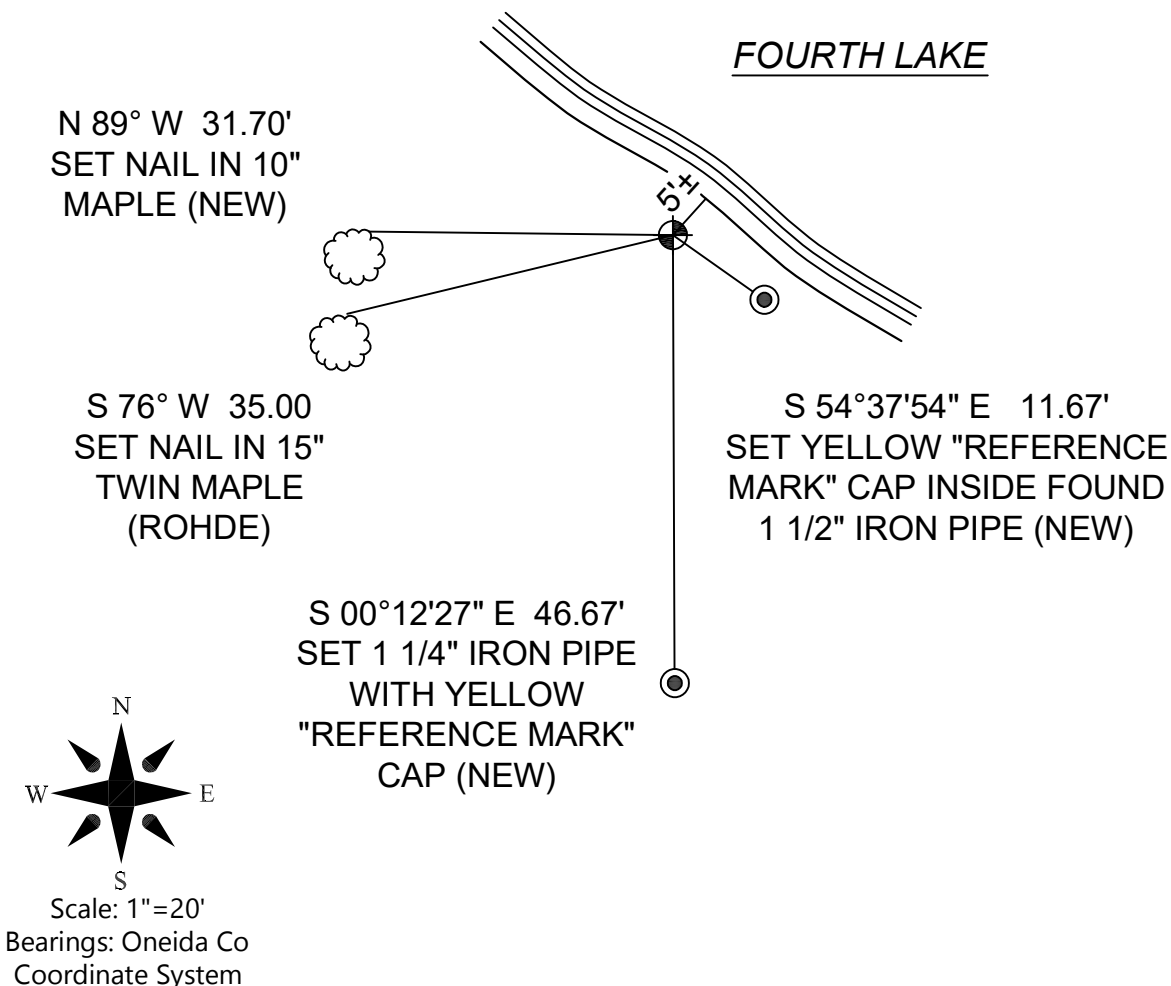
Corner Set: N/A  
 Original Surveyor: N/A  
 Date of Survey: N/A  
 See monument record by Rohde for more information on the setting of this monument.

The coordinate value has been verified by at least one of the following methods:

1. Comparison to a previously determined GNSS determined published value;
2. The value is the average of two or more GNSS observations at markedly different times;
3. One or more distances were measured to the corner from offset GNSS observed locations, set and observed per No. 2 methods.

**3(b)(c)(d)(f)(g)(h)**

- This is a continuation of a previous USPLSS Monument Records by Surveyor William Rohde, S-841 (2003).
- 9/20/2025 - I, Anthony Jones, S-2508, found the Oneida County aluminum monument set by Rohde. The only witness I recovered was the twin maple (S 78° W), in which I set a 6" nail. The other three witness are gone. I set new witnesses as shown below. I did not set a white witness post as it is in a manicured lawn.



3(i) I, Anthony R. Jones, Wisconsin Professional Land Surveyor No S-2508, hereby certify that the corner location shown on this record was determined by me, and that this U.S. Public Land Survey Monument Record is correct and complete to the best of my knowledge and belief.

