

CERTIFIED LAND CORNER RESTORATION

Index No. N-9

State of Wisconsin }
County of Oneida } ss.

I Philip T. Hansen, do hereby certify that on the 2nd day of December, 19 75, I found evidence of the Section corner of S17, 16, 21, 20 Township 36, North, Range 10 East, Fourth Principal Meridian, as described hereon; and that from this evidence I established a new monument and accessories as described hereon to perpetuate the original location of this corner.

Resident witnesses:

Glen Barker

Jim Claflin



History of original corner establishment: Original corner established by William E. Dougherty, Deputy Surveyor, in 1863 from which white pine 16" bears N79°E, 23 links and yellow pine 16" bears S61°W, 81 links. Corner restored in 1938 by unknown source. Corner recovered and restored in 1948 by H.C. Lawrence, Registered Land Surveyor. Found a white conservation post with location poster attached. Also, a white pine 16" with old scar facing towards post. He chopped into it and found scribing S20 BT, which according to growth rings was made in 1938.

Set new posts and measured to OBT - W. pine 16" S70°W 164 links
Jack pine 7" N79°W 26 links

Description of corner evidence found:

Recovered 2" iron pipe with brass cap stamped -
Pipe projects 18" above ground.
Also found Lawrence's 5" tamarack post, squared and scribed, lying beside it. Measurements and bearings to BT's fit perfectly.

T36N R10E

17	16
20	21

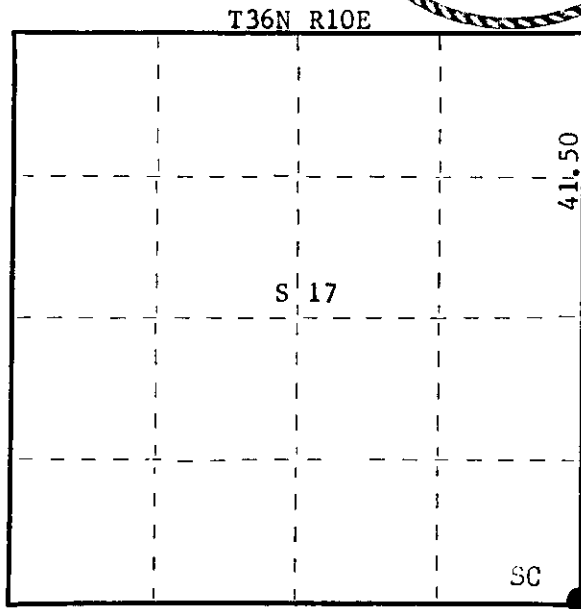
Recovered OBT's - W. pine 16" (24") S70°W 164 links scribed S20 BT.
Jack pine 9" (12") N79°W 26 links scribing grown over.

Description of monument and accessories I established to perpetuate the original location of this corner.

As iron pipe was in perfect condition it was left in place.
Painted pipe and OBT's blue.

NBT - W. birch 10" S42°E 9.5 links scribed SC BT.

FORM 985 H. C. MILLER CO., MILWAUKEE



○ = Corner monument restored.

Dated at Rhineland, Wis., this 9th day of December, 19 75.

Signature Philip T. Hansen Title Registered Land Surveyor Registration No. S-498
(County Surveyor, Registered Land Surveyor, or other duly authorized official)

Office of Register of Deeds, County of Oneida, I hereby certify that the within instrument was filed in this office for record on the 4th day of June, 19 76 at 1:00 o'clock P. M.

Donna George Kuehn
(Register of Deeds)

By _____ Deputy

3610170000

U.S. PUBLIC LAND SURVEY MONUMENT RECORD
ONEIDA COUNTY

WI CORNER IDENTIFICATION NO.: 43610170000

Monument Type: 2.00" IRON PIPE WITH BRASS CAP

COUNTY CORNER NO.: N-9

County Coordinate: N 151696.782 , E 302979.386

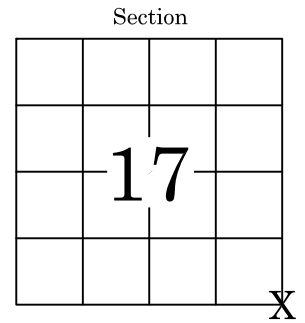
Date of Survey: 3/28/2024 Datum: NAD83(2011)

Survey Party: K. SCHUMACHER & D. MOE

Found Set Re-set Re-Tied

Section 17
 Township 36 N
 Range 10 E

TOWN OF PELICAN
 City, Village, Town



BASIS FOR MONUMENT LOCATION:

(Describe method of survey and corner authentication)

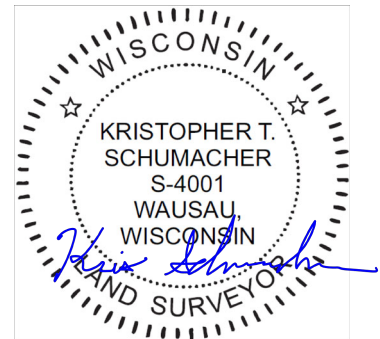
1863: PLS W.E.DOUGHERTY ESTABLISHED CORNER WITH 2 BEARING TREES.

1938: CORNER RESTORED BY UNKNOWN SOURCE.

1948: PLS H.C.LAWRENCE FOUND WHITE CONSERVATION POST AND WHITE PINE SCRIBED S20BT. ACCEPTED AS CORRECT, SET NEW POSTS AND RE-TIED WITH 2 BEARING TREES.

1976: PLS #498 FOUND 2.00" IRON PIPE WITH STAMPED BRASS CAP AT CORNER LOCATION MATCHING LOCATION FROM BEARING TREES. ACCEPTED AS CORRECT, ADDED 1 BEARING TREE AND RE-TIED CORNER.

2024: PLS 4001 FOUND 2.00" IRON PIPE WITH STAMPED BRASS CAP AND 1 BEARING TREE. BEARING TREE WAS DEAD AND MATCHED WELL WITH CORNER LOCATION. ACCEPTED AS CORRECT, SET 4 NEW TIES AND RE-TIED CORNER.

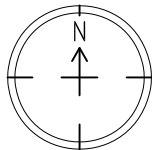


KRISTOPHER T. SCHUMACHER

PLS-4001 Date: 3/30/2024

The U.S. Public Land Survey Monument Record is Correct and complete to the best of my knowledge and belief.

TIE SKETCH: Show minimum of four (4) horizontal tie distances to fixed witness monuments. Describe all monuments found or set.

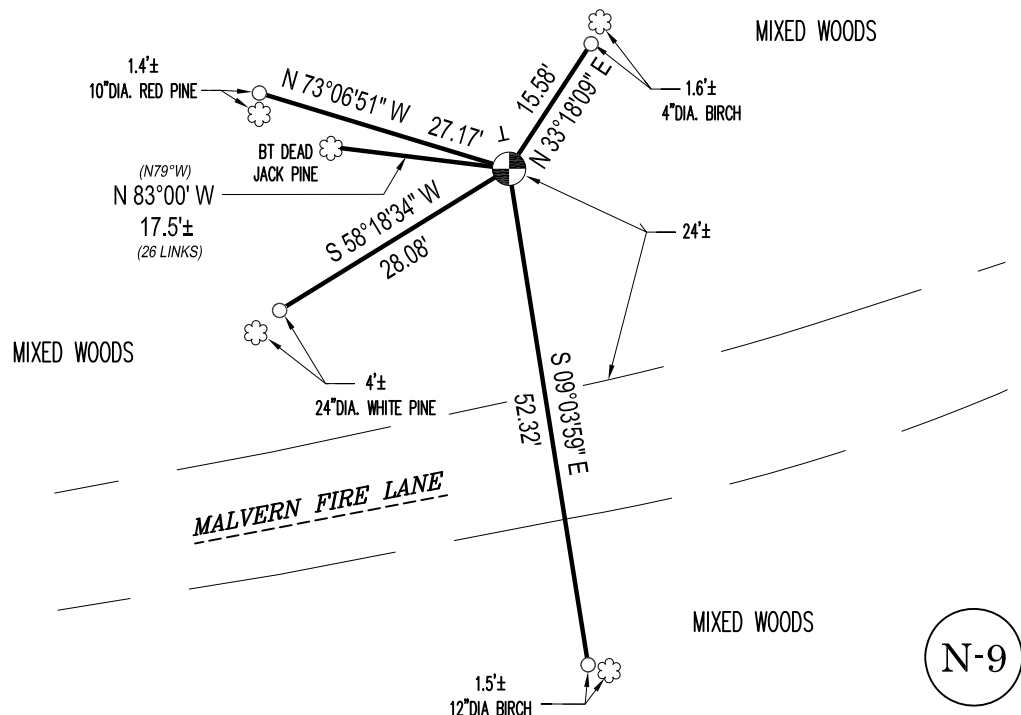


Bearings are based on the Oneida County Coordinate System NAD83 (2011).

Oneida County
 Land Information Office
 Filed
4/11/2024

LEGEND

- SECTION/QUARTER CORNER
- 0.63" X 24" IRON BAR SET WEIGHING 1.04 LBS/LIN. FT.
- PVC T-POST



N-9