

CERTIFIED LAND CORNER RESTORATION

Index No. A-23

State of Wisconsin }  
County of Oneida } ss.

I Philip T. Hansen, do hereby certify that on the 15th day of October, 1976, I found evidence of the Quarter corner of Section 36 and 1 Township 36 and 1, North, Range 11 East, Fourth Principal Meridian, as described hereon; and that from this evidence I established a new monument and accessories as described hereon to perpetuate the original location of this corner.

Resident witnesses:

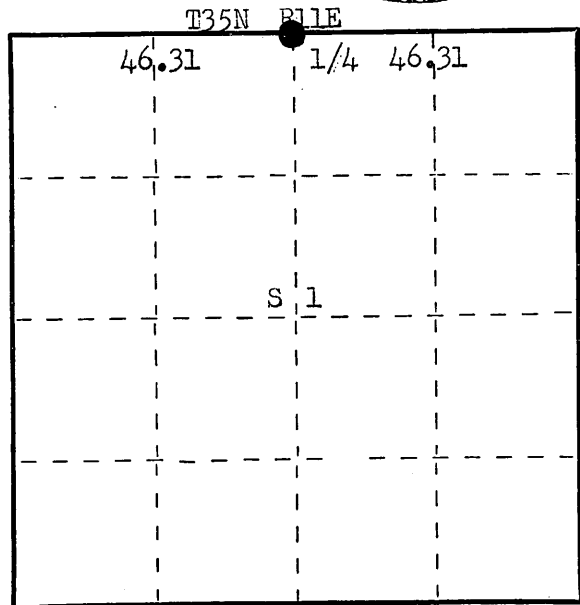
Glen Barker

Jim Claflin

Herb Wagoner



FORM 985  
Wisconsin Printing & Publishing Co.  
Madison, Wisconsin



○ = Corner monument restored.

History of original corner establishment: Original Corner established by Hiram C. Fellows, Deputy Surveyor, in 1859, from which willow 6" bears N 15° E 19 links and tamarack 12" bears S 55° W 13 links. His measurement was 80.00 chains. Wm. E. Dougherty retraced this line the same year and measured 80.41 chains.

H.C. Lawrence, Registered Land Surveyor, retraced this line in 1957. From recovered corner at Sec. 35, 36, 1 & 2, he ran a random line S 89° 30' E and at 92.62 chains, closed out 4.72 chains north of Township Corner. Corrected bearing on line S 86° 40' E. Set 1/4 post at 46.31 chains intermediate and 2.32 chains south. Marked BTs - Cedar 7" S 47° W 42 1/2 links and Tamarack 5" N 59° E 55 1/2 links.

Description of corner evidence found:

Recovered 5" cedar post, squared and scribed 1/4 S S1, 1/4 S S36 in very poor condition.

Recovered OBT - Cedar 7" S 47° W (S 53° W) 42.5 links, scribed 1/4 S BT.  
Tamarack 5" (8") N 59° E 55.5 links, scribed 1/4 S BT.

Description of monument and accessories I established to perpetuate the original location of this corner.

Replaced 5" cedar post with 2 1/2" Berntsen A-1 Federal Monument, aluminum with magnet installed in cap and base. Monument projects 18" above ground. Cap stamped:

Marked NBTs - Tamarack 10" N 2° W 40.2 links, scribed 1/4 BT.  
Tamarack 9" S 76° W 10 links, scribed 1/4 BT.

T36N R11E  
1/4 S | 36  
S | 1  
T35N R11E  
S498 1976

Dated at Rhineland, Wis., this 29th day of November, 1976

Signature Philip T. Hansen Title Registered Land Surveyor Registration No. S-498  
(County Surveyor, Registered Land Surveyor, or other duly authorized official)

Office of Register of Deeds, County of Oneida, I hereby certify that the within instrument was filed in this office for record on the 7th day of December, 1976 at 11:00 o'clock a M.

Doris Verage Kuehn  
(Register of Deeds)

By Joseph M. Broemer Deputy

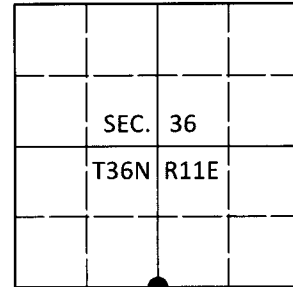
0200020  
3611360020

# U.S. PUBLIC LAND SURVEY MONUMENT RECORD

Note: This form is intended and designed to fulfill all requirements of Wisconsin Administrative Code, Chapter A-E 7.08 U.S. Public Land Survey Monument Record (3)(a-i).

(a) CORNER LOCATION  
 1/4 Cor. of Secs. 1 & 36  
 Township 35 & 36 North  
 Range 11 East of the 4th P.M.  
 Town of Schoepke & Monico  
 County of Oneida

WISCRS - Oneida County  
 N: 133,528.01 USft  
 E: 354,527.07 USft  
 Datum: NAD83(2011)  
 GNSS Method: RTN - Direct  
 GNSS Control: WISCORS VRS



(b) HISTORY OF ORIGINAL CORNER ESTABLISHMENT

Original Surveyor: \_\_\_\_\_ Original Accessories: \_\_\_\_\_  
 Date of Survey Commenced: \_\_\_\_\_ see previous monument record  
 Completed: \_\_\_\_\_

(b)(f)(g)(h) Description of monument found at this corner and if it was accepted, state all evidence (material, testimonial, occupational, plats, records, other monuments) used as a basis for accepting. If not accepted or if nothing was found, state evidence used as basis for establishing location. If re-established through lost corner proportionate methods, indicate all monuments, distances and directions used to establish. Indicate type of monument and sign post found or set.

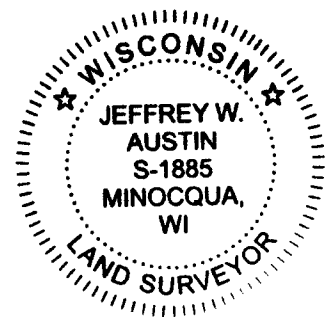
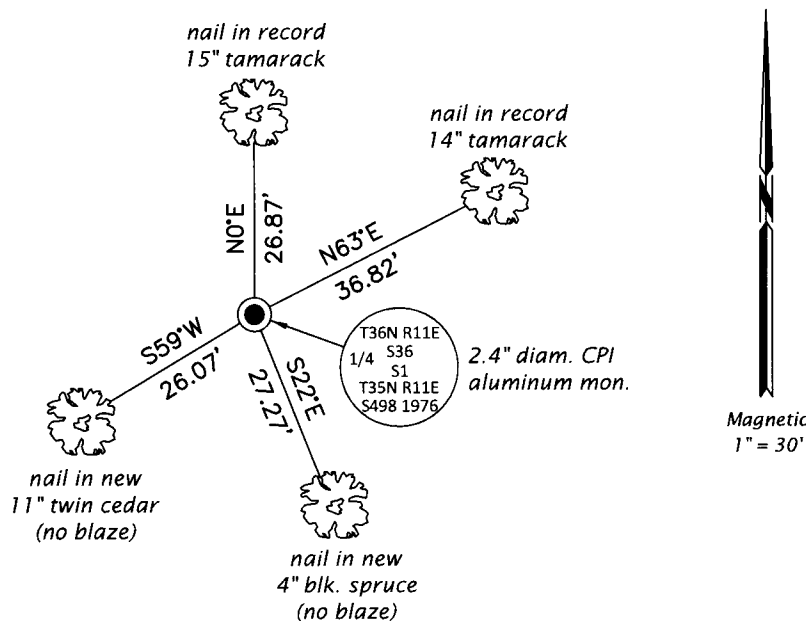
*This is a perpetuation of the following monument record(s) that comprise a complete history of the corner:*

*Nov. 29, 1976: Certified Land Corner Restoration No. 3611360020 by Philip T. Hansen, RLS*

*May 25, 2019: I found and accepted the record monument, a 2.4" diam. aluminum pipe with a 3.3" diam. CPI aluminum cap projecting 6" above the bog surface. The record bearing tree at S76°W is now a stump. The record bearing tree at S47°W is now standing dead. I found or established accessories as shown below. I set a white vinyl sign post bearing Northwest, 0.5 ft.*

*The coordinate value shown has been verified by at least one of the following methods: 1) comparison to a previously GPS determined published value; 2) the value is the average of two or more GPS observations at a markedly different time; 3) one or more distances were measured back to the GPS observed corner from temporary GPS observed offset locations.*

(c)(d)(e) Plan view of corner with ties to at least 4 witness monuments. If in disagreement with previously established corner, show the distances between the two corners and also indicate the ties to the disputed.

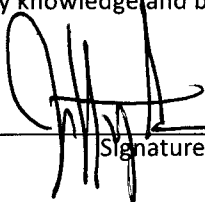


REGISTER OF DEEDS OFFICE  
 ONEIDA COUNTY  
 FILED

JUN 18 2019

KYLE J. FRANSON  
 REGISTER OF DEEDS

(i) I, Jeffrey W. Austin, Professional Land Surveyor No. S-1885, hereby certify that the corner location on this record was determined by me or under my direction and control and that this U.S. Public Land Survey Monument Record is correct and complete to the best of my knowledge and belief.

  
 Signature

JUNE 2019  
 Date