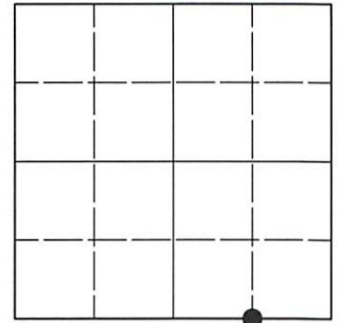


U.S. PUBLIC LAND SURVEY MONUMENT RECORD

Note: This form is intended and designed to fulfill all requirements of Wisconsin Administrative Code, Chapter A-E 7.08 U.S. Public Land Survey Monument Record (3)(a-i).

(a) CORNER LOCATION
 E 1/16 Cor. of Secs. 5 & 8
 Township 37 North
 Range 4 East of the 4th P.M.
 Town of Lynne
 County of Oneida

WISCRS - Oneida County
 N: 193,811.565 USft
 E: 111,251.519 USft
 Datum: NAD 83(2011) ep. 2010.00
 GNSS Method: RTN - Direct
 GNSS Control: WISCORS VRS



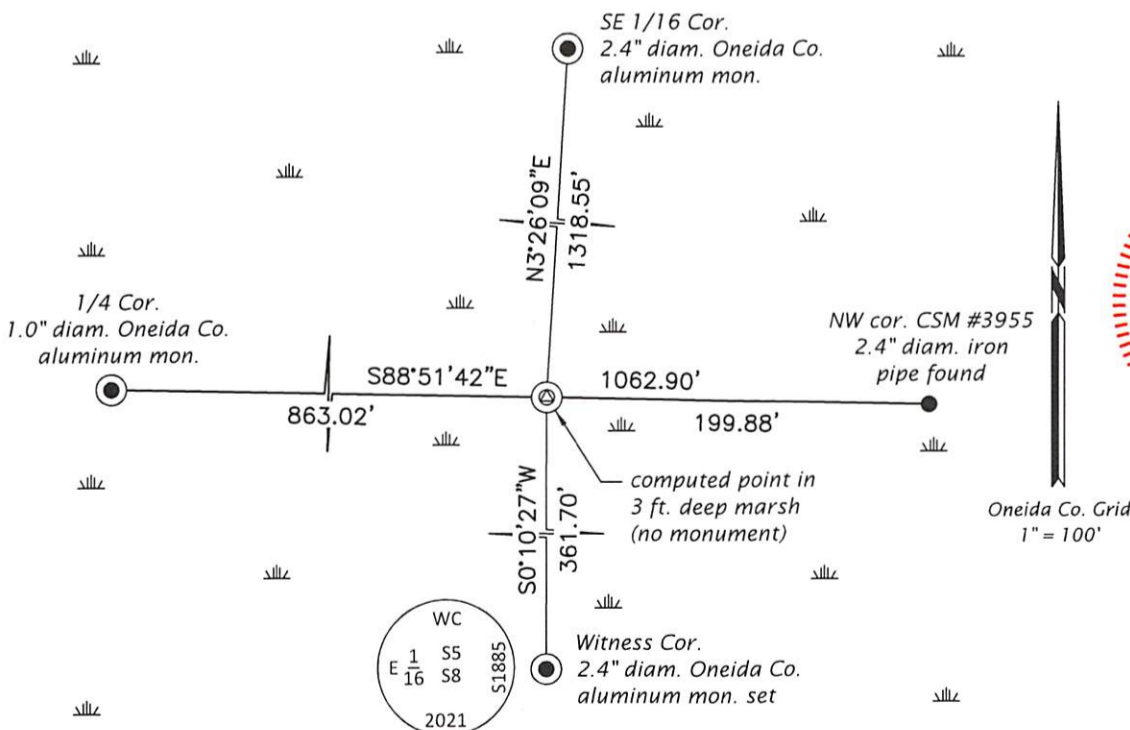
Sec. 5, T. 37 N., R. 4 E.

(b)(f)(g)(h) Description of monument found at this corner and if it was accepted, state all evidence (material, testimonial, occupational, plats, records, other monuments) used as a basis for accepting. If not accepted or if nothing was found, state evidence used as basis for establishing location. If re-established through lost corner proportionate methods, indicate all monuments, distances and directions used to establish. Indicate type of monument and sign post found or set.

Nov. 10, 2021: I was unable to locate record or field evidence indicating this corner was established in prior surveys. As such, I positioned the corner as required by state and federal statutes as depicted on the remainder of this record. The corner is located in a 3 ft. deep marsh. As a witness corner, I set a 2.4" diam., 60" long aluminum pipe with a 3.3" diam. Oneida County aluminum cap flush with the bog surface. I established other accessories as indicated below. A white vinyl sign post is adjacent to the witness corner.

The coordinate value shown has been verified by averaging two or more GNSS observations at markedly different times.

(c)(d)(e) Plan view of corner with ties to at least 4 witness monuments. If in disagreement with previously established corner, show the distances between the two corners and also indicate the ties to the disputed.



REGISTER OF DEEDS OFFICE
 ONEIDA COUNTY
 FILED

APR 21 2022

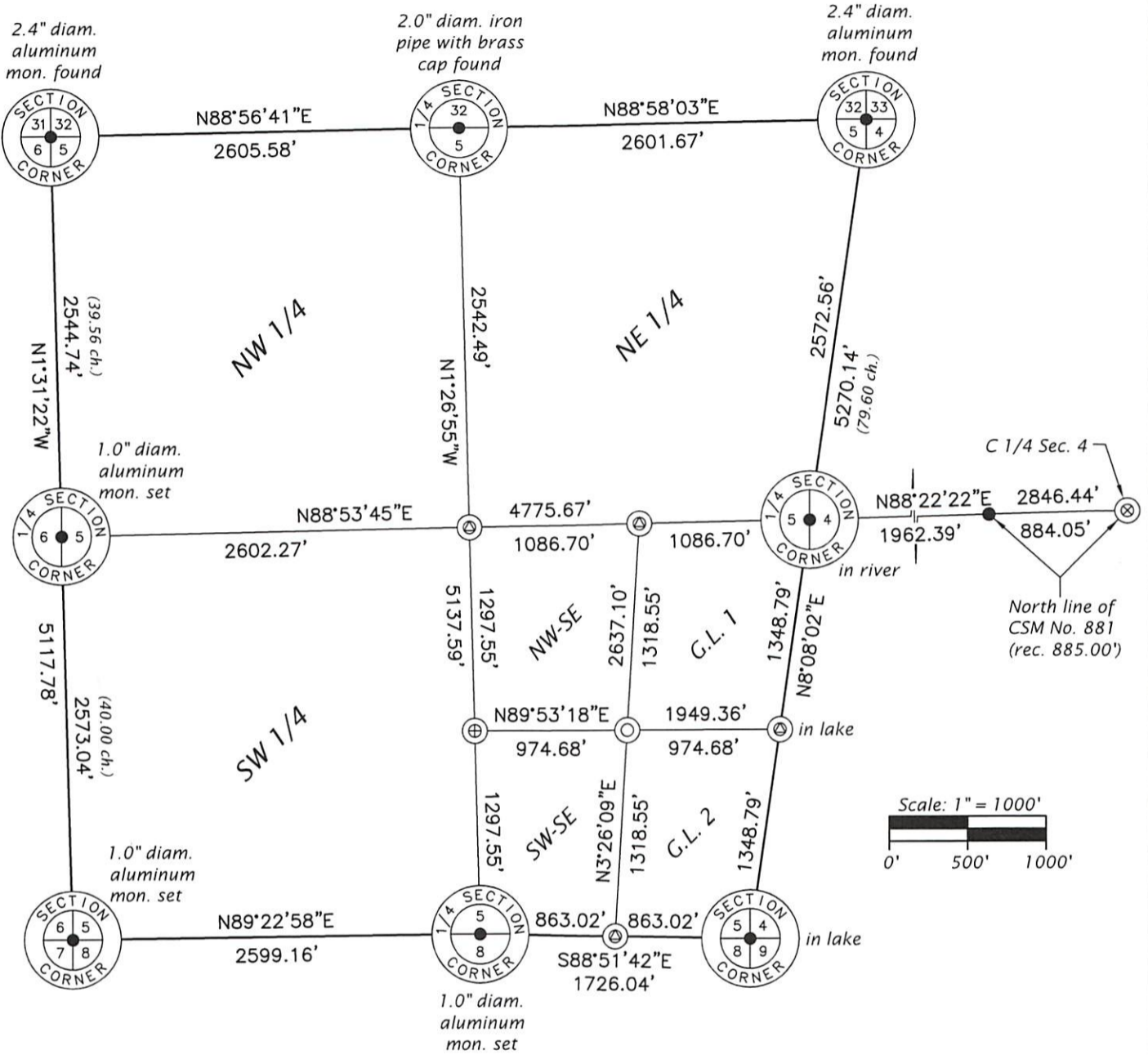
KYLE J. FRANSON
 REGISTER OF DEEDS

(i) I, Jeffrey W. Austin, Professional Land Surveyor No. S-1885, hereby certify that the corner location on this record was determined by me or under my direction and control and that this U.S. Public Land Survey Monument Record is correct and complete to the best of my knowledge and belief.


 Signature

APR 10 2022
 Date

SECTION 5, T37N, R4E



Grid North (WISCRS - Oneida)
Derived from WISCORS GNSS
observations and referenced to
the monumented lines shown.



In the course of researching this survey, the following agencies and companies were contacted and/or their records examined in person or remotely: Oneida Co. Surveyor; Oneida Co. Forester; Oneida Co. Register of Deeds; Wisconsin Department of Natural Resources (Rhineland, Tomahawk and Trout Lake); Wisconsin Board of Commissioners of Public Lands; The Northern Great Lakes Visitor Center (Ashland); U.S. Geological Survey; Bureau of Land Management; Genisot & Associates, Inc.; Wilderness Surveying, Inc.; Maines & Associates, S.C.

Although unsuccessful, a letter was sent to adjoining landowners requesting copies of private survey information in their possession.

Professional Land Surveyor No. S-1885

Date: APR 10, 2022

REGISTER OF DEEDS OFFICE
ONEIDA COUNTY
FILED

APR 21 2022

KYLE J. FRANSON
REGISTER OF DEEDS

LEGEND

- = 1.0" o.d. iron pipe found
- ⊙ = computed point, no monument
- ⊗ = 1.4" o.d. iron pipe with tee found
- ⊕ = 1.0" diam. aluminum mon. set
- ⊖ = 2.4" diam. aluminum mon. set
- () = GLO record measurement