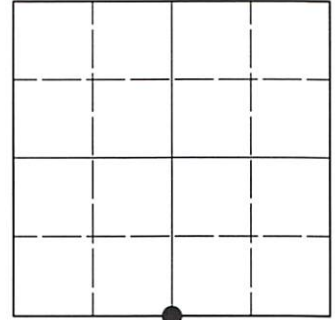


U.S. PUBLIC LAND SURVEY MONUMENT RECORD

Note: This form is intended and designed to fulfill all requirements of Wisconsin Administrative Code, Chapter A-E 7.08 U.S. Public Land Survey Monument Record (3)(a-i).

(a) CORNER LOCATION
 1/4 Cor. of Secs. 5 & 8
 Township 37 North
 Range 4 East of the 4th P.M.
 Town of Lynne
 County of Oneida

WISCORS - Oneida County
 N: 193,828.710 USft
 E: 110,388.665 USft
 Datum: NAD 83(2011) ep. 2010.00
 GNSS Method: RTN - Direct
 GNSS Control: WISCORS VRS



Sec. 5, T. 37 N., R. 4 E.

(b)(f)(g)(h) Description of monument found at this corner and if it was accepted, state all evidence (material, testimonial, occupational, plats, records, other monuments) used as a basis for accepting. If not accepted or if nothing was found, state evidence used as basis for establishing location. If re-established through lost corner proportionate methods, indicate all monuments, distances and directions used to establish. Indicate type of monument and sign post found or set.

Oct. 4-13, 1864: GLO survey by Edward D. Palmer, U.S. Deputy Surveyor. East true line between Secs. 5 and 8, 40.00 chs. set a wood post witnessed by: alder 3 N32°E, 4 lks.; elm 6 S60°W, 21 lks.

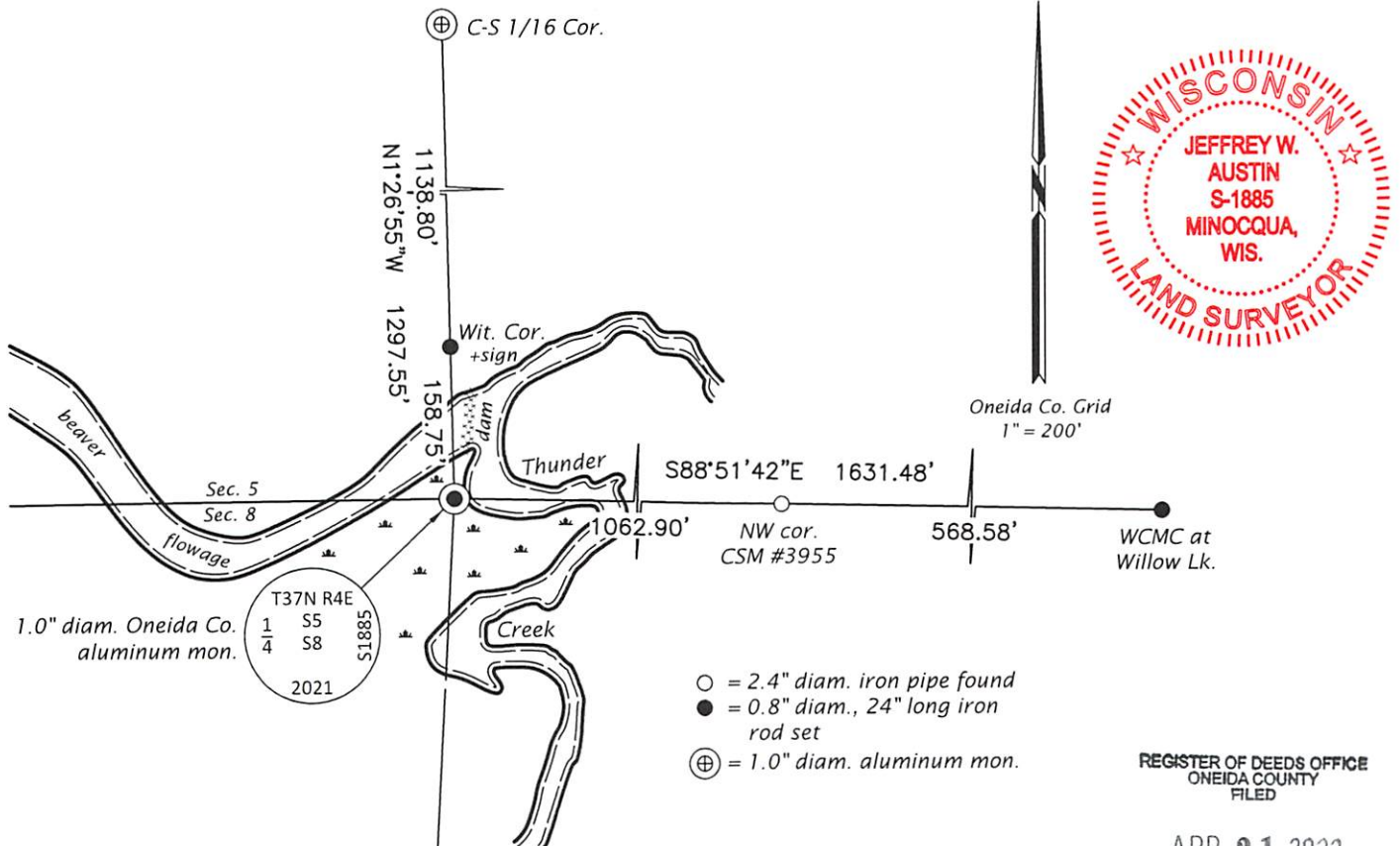
Nov. - Dec., 1966: Field notes by William S. Cameron identify corner as "nail set by intersection of BTs, no old evidence found." elm 12" S10°E, 22.65'; elm 14" S52°W, 23.25' - In addition, the notes contain the following entry, "continue compass West, 2 BTs and state tag for N 1/4 Cor. Sec. 8 on edge of creek. Corner apparently under ice. Hassler, Sporke, Zimmer on tag." Cameron's final map is OCS Map No. B-740.

Sep. 11, 2011: On Certified Survey Map No. 3955, Timothy G. Vreeland, PLS set a 2.375" x 36" iron pipe based on the previous work by Cameron.

Sep. 30, 2021: I found and accepted the record monument, a 2.4" diam., 30" long iron pipe in knee-deep beaver flowage. In place of the pipe, I set a 1.0" diam., 60" long aluminum pipe with a 2.5" diam. Oneida Co. aluminum cap with white vinyl sign post adjacent. I found or established accessories as indicated below.

The coordinate value shown has been verified by averaging two or more GNSS observations at markedly different times.

(c)(d)(e) Plan view of corner with ties to at least 4 witness monuments. If in disagreement with previously established corner, show the distances between the two corners and also indicate the ties to the disputed.



REGISTER OF DEEDS OFFICE
 ONEIDA COUNTY
 FILED

APR 21 2022

KYLE J. FRANSON
 REGISTER OF DEEDS

(i) I, Jeffrey W. Austin, Professional Land Surveyor No. S-1885, hereby certify that the corner location on this record was determined by me or under my direction and control and that this U.S. Public Land Survey Monument Record is correct and complete to the best of my knowledge and belief.

[Handwritten Signature]
 Signature

APR. 10, 2022
 Date