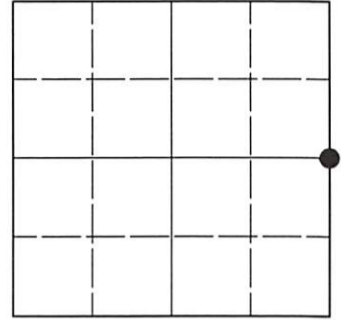


U.S. PUBLIC LAND SURVEY MONUMENT RECORD

Note: This form is intended and designed to fulfill all requirements of Wisconsin Administrative Code, Chapter A-E 7.08 U.S. Public Land Survey Monument Record (3)(a-i).

(a) CORNER LOCATION
 1/4 Cor. of Secs. 4 & 5
 Township 37 North
 Range 4 East of the 4th P.M.
 Town of Lynne
 County of Oneida

WISCORS - Oneida County
 N: 196,464.868 USft
 E: 112,496.052 USft
 Datum: NAD 83(2011) ep. 2010.00
 GNSS Method: RTN - Direct
 GNSS Control: WISCORS VRS



Sec. 5, T. 37 N., R. 4 E.

(b)(f)(g)(h) Description of monument found at this corner and if it was accepted, state all evidence (material, testimonial, occupational, plats, records, other monuments) used as a basis for accepting. If not accepted or if nothing was found, state evidence used as basis for establishing location. If re-established through lost corner proportionate methods, indicate all monuments, distances and directions used to establish. Indicate type of monument and sign post found or set.

Oct. 4-13, 1864: GLO survey by Edward D. Palmer, U.S. Deputy Surveyor. South on true line between Secs. 4 and 5: 39.60 chs. (1/4 cor.) set a wood post witnessed by: spruce 7 N12°W, 40 lks.; spruce 2 S28°E, 22 lks. 56.72 chs. (meander cor.) set a wood post witnessed by: spruce 12 N10°W, 20 lks.; spruce 7 N5°E, 230 lks.

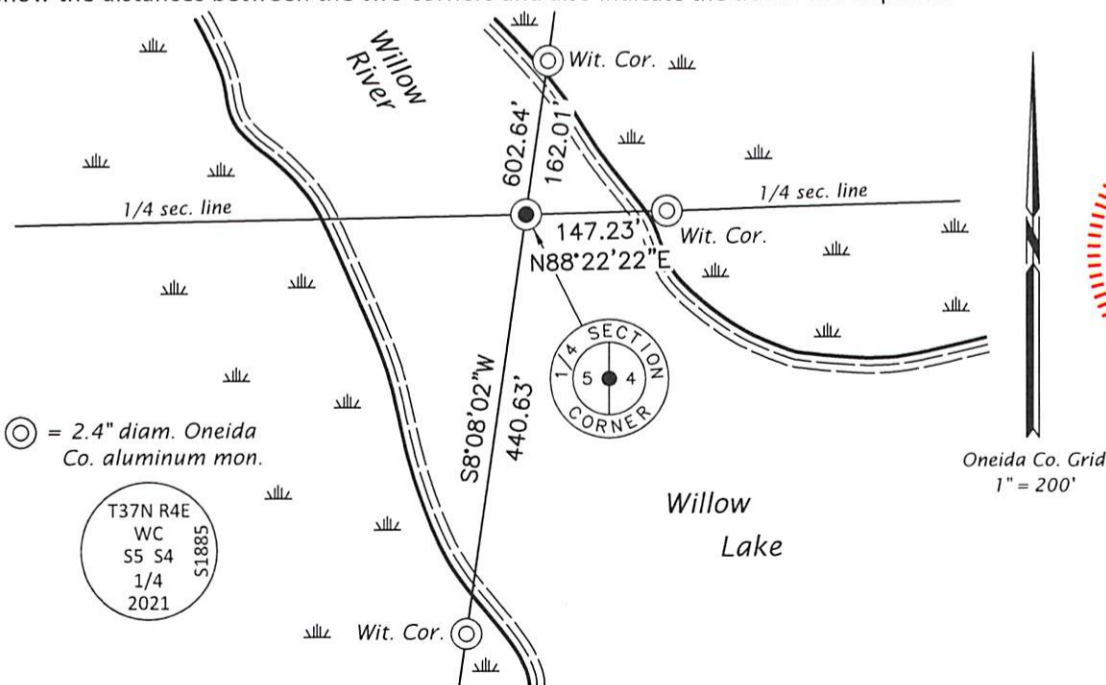
June 11, 1981: On Certified Survey Map No. 881, Charles E. Winkler, RLS surveys the quarter-section line of Sec. 4 West of the center quarter-section corner.

Nov. 7, 2021: An extensive search for prior survey evidence was performed without success. As a result, I determine the corner to be obliterated and position it by intersecting the line common to Sections 4 and 5 with an extension of the North line of Certified Survey Map No. 881 as detailed on the remainder of this record.

As witness corners to the corner point in the water: I set 2.4" diam., 60" long aluminum pipe with a 3.3" diam. Oneida Co. aluminum cap flush with the bog surface as shown below. I set a white vinyl sign post adjacent to each monument.

The coordinate value shown has been verified by averaging two or more GNSS observations at markedly different times.

(c)(d)(e) Plan view of corner with ties to at least 4 witness monuments. If in disagreement with previously established corner, show the distances between the two corners and also indicate the ties to the disputed.



REGISTER OF DEEDS OFFICE
 ONEIDA COUNTY
 FILED

APR 21 2022

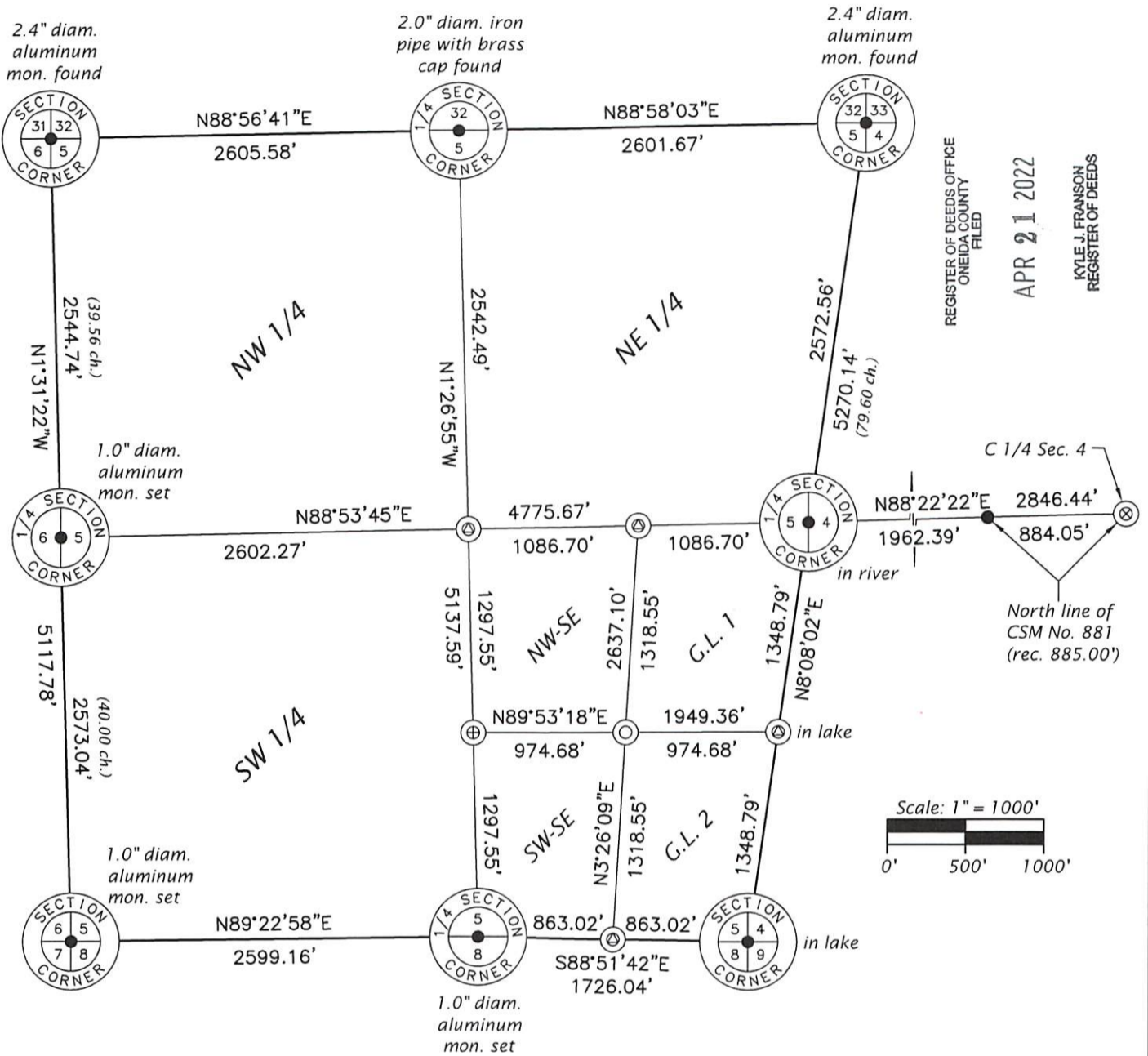
BOYLE J. FRANSON
 REGISTER OF DEEDS

(i) I, Jeffrey W. Austin, Professional Land Surveyor No. S-1885, hereby certify that the corner location on this record was determined by me or under my direction and control and that this U.S. Public Land Survey Monument Record is correct and complete to the best of my knowledge and belief.

[Handwritten Signature]
 Signature

APR. 10, 2022
 Date

SECTION 5, T37N, R4E

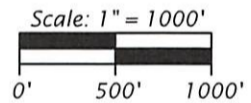


REGISTER OF DEEDS OFFICE
ONEIDA COUNTY
FILED

APR 21 2022

KYLE J. FRANSON
REGISTER OF DEEDS

C 1/4 Sec. 4
2846.44'
884.05'
North line of
CSM No. 881
(rec. 885.00')



Grid North (WISCRS - Oneida)
Derived from WISCORS GNSS
observations and referenced to
the monumented lines shown.



In the course of researching this survey, the following agencies and companies were contacted and/or their records examined in person or remotely: Oneida Co. Surveyor; Oneida Co. Forester; Oneida Co. Register of Deeds; Wisconsin Department of Natural Resources (Rhineland, Tomahawk and Trout Lake); Wisconsin Board of Commissioners of Public Lands; The Northern Great Lakes Visitor Center (Ashland); U.S. Geological Survey; Bureau of Land Management; Genisot & Associates, Inc.; Wilderness Surveying, Inc.; Maines & Associates, S.C.

Although unsuccessful, a letter was sent to adjoining landowners requesting copies of private survey information in their possession.


Professional Land Surveyor No. S-1885

Date: APR. 10, 2022

LEGEND

- = 1.0" o.d. iron pipe found
- ⊙ = computed point, no monument
- ⊗ = 1.4" o.d. iron pipe with tee found
- ⊕ = 1.0" diam. aluminum mon. set
- = 2.4" diam. aluminum mon. set
- () = GLO record measurement