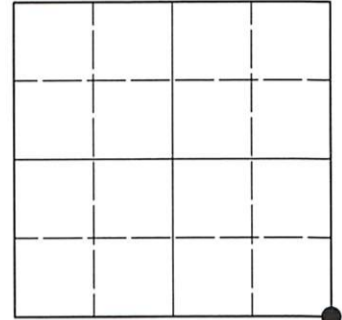


# U.S. PUBLIC LAND SURVEY MONUMENT RECORD

Note: This form is intended and designed to fulfill all requirements of Wisconsin Administrative Code, Chapter A-E 7.08 U.S. Public Land Survey Monument Record (3)(a-i).

(a) CORNER LOCATION  
 Cor. of Secs. 7, 8, 17 & 18  
 Township 37 North  
 Range 4 East of the 4th P.M.  
 Town of Lynne  
 County of Oneida

WISCRS - Oneida County  
 N: 188,657.089 USft  
 E: 107,812.939 USft  
 Datum: NAD 83(2011) ep. 2010.00  
 GNSS Method: RTN - Direct  
 GNSS Control: WISCORS VRS



Sec. 7, T. 37 N., R. 4 E.

(b)(f)(g)(h) Description of monument found at this corner and if it was accepted, state all evidence (material, testimonial, occupational, plats, records, other monuments) used as a basis for accepting. If not accepted or if nothing was found, state evidence used as basis for establishing location. If re-established through lost corner proportionate methods, indicate all monuments, distances and directions used to establish. Indicate type of monument and sign post found or set.

Oct. 4-13, 1864: GLO survey by Edward D. Palmer, U.S. Deputy Surveyor. North between Secs. 17 and 18, at 80.00 chs. set a wood post witnessed by: sugar 10 N17°W, 11 lks.; birch 14 N47°E, 27 lks.; sugar 5 S22°E, 12 lks.; hemlock 8 S41°W, 11 lks.

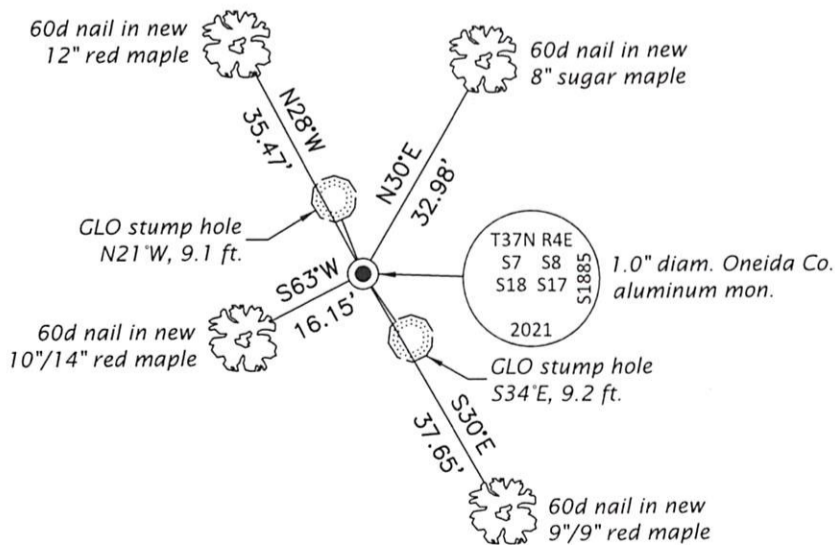
1939-1940: Timber Sale Report in Section 18 by Wisconsin Conservation Department. The NE section cor. is labeled "IP."

1941: On the USGS "Brantwood" 15-min. quadrangle, the symbol associated with this corner is keyed as "found section corner." According to the USGS publication "Maps for America," found corners are "those whose original or restored monuments or marks are recovered or whose positions are definitely established by one or more witness corners or reference monuments."

Oct. 22, 2021: With GNSS, I navigated to the "found section corner" symbol shown on the georeferenced USGS quadrangle. Near that point, I found a distinct, man-made ring of stone that I believe once surrounded a wood post, long since decayed (see photo page). I also found stump holes corresponding to both of the sugar maple GLO bearing trees (see photo page). I was unable to locate the remains of the other GLO trees. In addition: 1) The distance West to the range line and the swamp edge near the quarter-section corner check the GLO record well. It's possible this corner was stubbed in from the range line. 2) To check the georeferencing of the digital map, I visited the old cabin about 1,500 feet West of this corner (see photo page). Although almost gone, the remains of the cabin agrees well with the symbol on the quadrangle. 3) The distance East to the creek agrees reasonably well with the GLO record. 4) Proportioning this corner would result in the fallen remains of a cabin North of the East 1/16 cor. (Secs. 8+17) being East of the 1/16th line. In an effort to locate the "IP" mentioned in the record, approximately 20 man-hours were expended by myself and three other experienced individuals searching within 300 ft. of the ring of stone. In the end, we located numerous railroad spikes and pieces of wire, but nothing else. I accept the ring of stone as the best remaining evidence of the original corner location. I set a 1.0" diam., 30" long aluminum pipe with a 2.5" diam. Oneida Co. aluminum cap flush in a collar of stone. I set a blue DEEP-1 magnet and railroad spike adjacent to the monument. Accessories were established as indicated below. A white vinyl sign post bears Northeast, 0.5 ft. dist.

The coordinate value shown has been verified by averaging two or more GNSS observations at markedly different times.

(c)(d)(e) Plan view of corner with ties to at least 4 witness monuments. If in disagreement with previously established corner, show the distances between the two corners and also indicate the ties to the disputed.



REGISTER OF DEEDS OFFICE  
 ONEIDA COUNTY  
 FILED

APR 21 2022

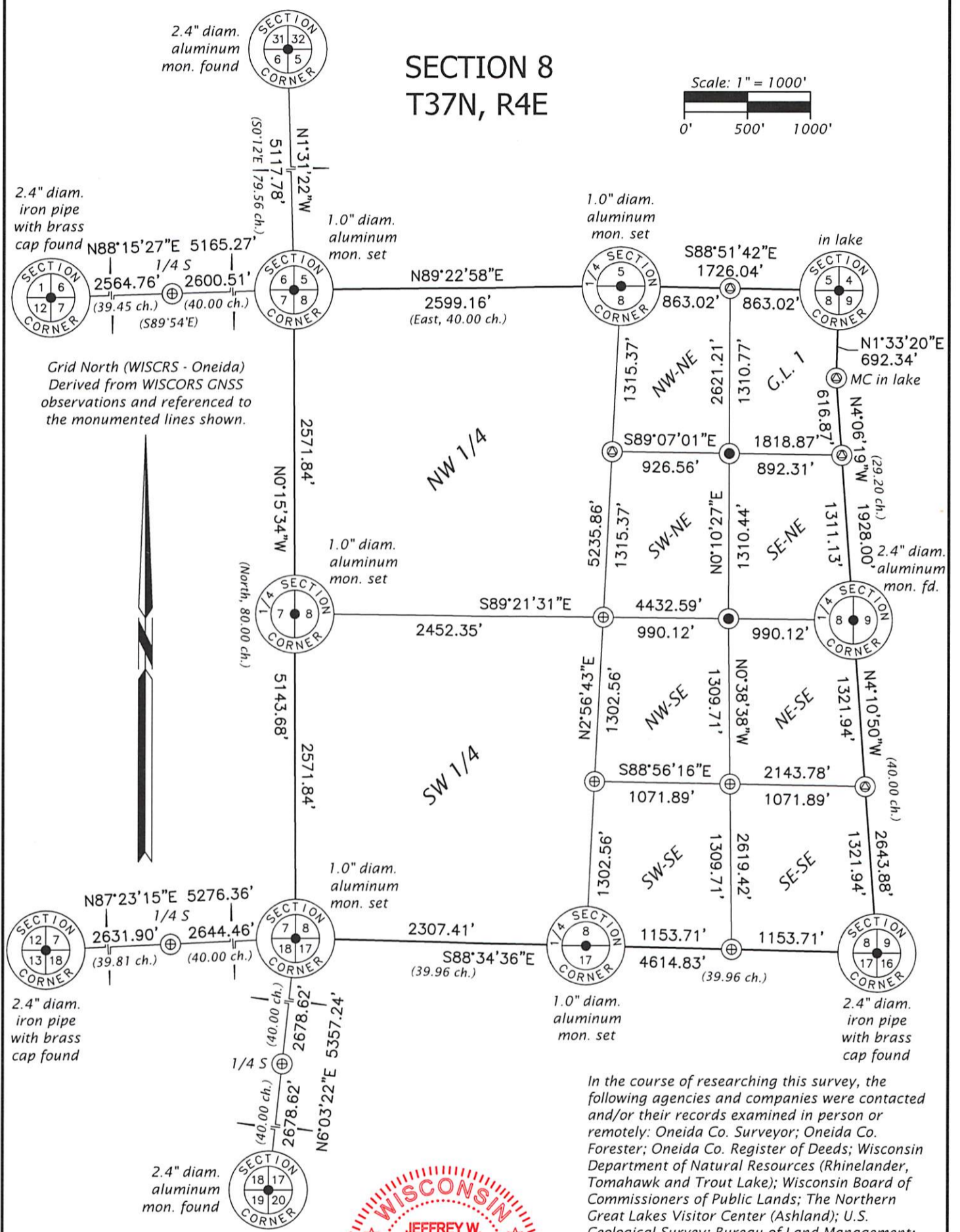
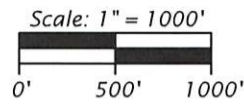
KYLE J. FRANSON  
 REGISTER OF DEEDS

(i) I, Jeffrey W. Austin, Professional Land Surveyor No. S-1885, hereby certify that the corner location on this record was determined by me or under my direction and control and that this U.S. Public Land Survey Monument Record is correct and complete to the best of my knowledge and belief.

  
 Signature

APR. 10, 2022  
 Date

# SECTION 8 T37N, R4E



In the course of researching this survey, the following agencies and companies were contacted and/or their records examined in person or remotely: Oneida Co. Surveyor; Oneida Co. Forester; Oneida Co. Register of Deeds; Wisconsin Department of Natural Resources (Rhineland, Tomahawk and Trout Lake); Wisconsin Board of Commissioners of Public Lands; The Northern Great Lakes Visitor Center (Ashland); U.S. Geological Survey; Bureau of Land Management; Genisot & Associates, Inc.; Wilderness Surveying, Inc.; Maines & Associates, S.C.

Although unsuccessful, a letter was sent to adjoining landowners requesting copies of private survey information in their possession.

*[Signature]*  
Professional Land Surveyor No. S-1885

Date: APR 10, 2022



REGISTER OF DEEDS OFFICE  
ONEIDA COUNTY  
FILED

APR 21 2022

KYLE J. FRANSON  
REGISTER OF DEEDS

- LEGEND
- = 0.8" diam. iron rod set
  - ⊙ = computed point, no monument
  - ⊕ = 1.0" diam. aluminum mon. set
  - ( ) = GLO record measurement

3704070000 Photos



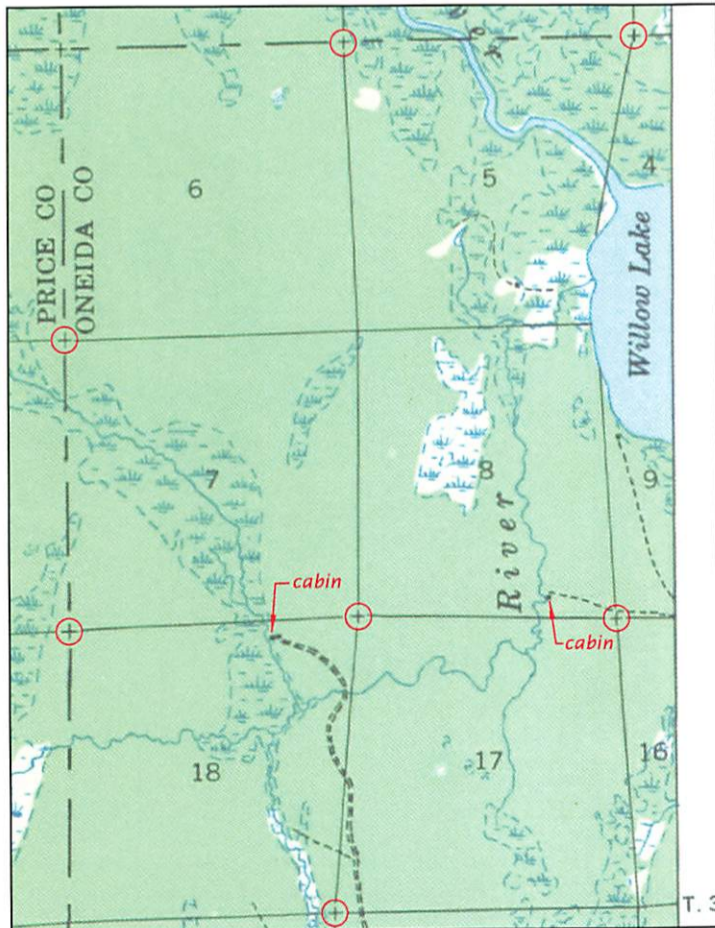
Ring of stone found at the corner point.



Stump hole of 10" sugar maple (GLO bearing tree).



Stump hole of 5" sugar maple (GLO bearing tree).



USGS 15 min. quadrangle  
Brantwood (1941)

REGISTER OF DEEDS OFFICE  
ONEIDA COUNTY  
FILED

APR 21 2022

KYLE J. FRANSON  
REGISTER OF DEEDS



Professional Land Surveyor No. S-1885

Date: APR. 10, 2022