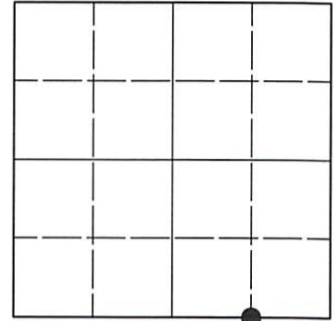


U.S. PUBLIC LAND SURVEY MONUMENT RECORD

Note: This form is intended and designed to fulfill all requirements of Wisconsin Administrative Code, Chapter A-E 7.08 U.S. Public Land Survey Monument Record (3)(a-i).

(a) CORNER LOCATION
 E 1/16 Cor. of Secs. 8 & 17
 Township 37 North
 Range 4 East of the 4th P.M.
 Town of Lynne
 County of Oneida

WISCRS - Oneida County
 N: 188,571.109 USft
 E: 111,272.988 USft
 Datum: NAD 83(2011) ep. 2010.00
 GNSS Method: RTN - Direct
 GNSS Control: WISCORS VRS



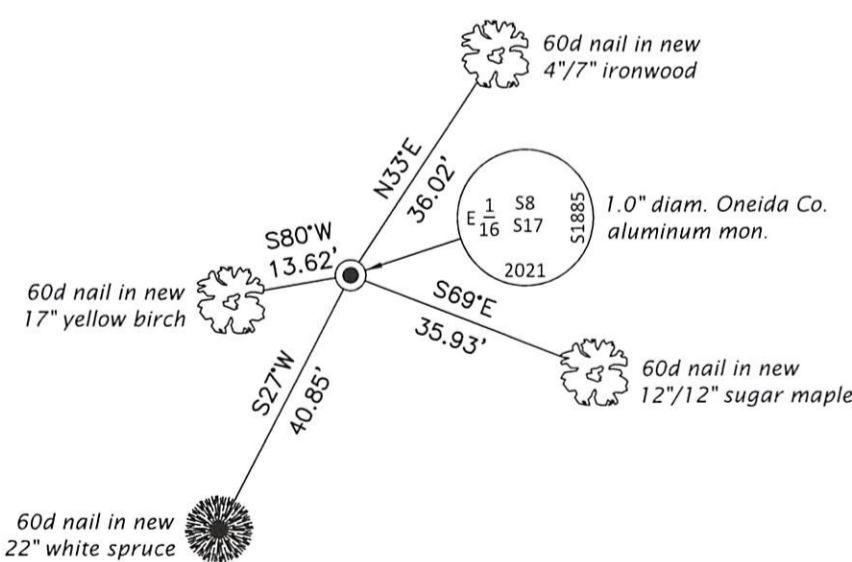
Sec. 8, T. 37 N., R. 4 E.

(b)(f)(g)(h) Description of monument found at this corner and if it was accepted, state all evidence (material, testimonial, occupational, plats, records, other monuments) used as a basis for accepting. If not accepted or if nothing was found, state evidence used as basis for establishing location. If re-established through lost corner proportionate methods, indicate all monuments, distances and directions used to establish. Indicate type of monument and sign post found or set.

Oct. 27, 2021: I was unable to locate record or field evidence indicating this corner was established in prior surveys. As such, I positioned the corner as required by state and federal statutes as depicted on the remainder of this record. At the corner point, I set a 1.0" diam., 30" long aluminum pipe with a 2.5" diam. Oneida County aluminum cap flush with the ground surface. I established accessories as indicated below. A white vinyl sign post bears Northwest, 0.6 ft.

The coordinate value shown has been verified by averaging two or more GNSS observations at markedly different times.

(c)(d)(e) Plan view of corner with ties to at least 4 witness monuments. If in disagreement with previously established corner, show the distances between the two corners and also indicate the ties to the disputed.



REGISTER OF DEEDS OFFICE
 ONEIDA COUNTY
 FILED

APR 21 2022

KYLE J. FRANSON
 REGISTER OF DEEDS

(i) I, Jeffrey W. Austin, Professional Land Surveyor No. S-1885, hereby certify that the corner location on this record was determined by me or under my direction and control and that this U.S. Public Land Survey Monument Record is correct and complete to the best of my knowledge and belief.

[Handwritten Signature]
 Signature

APR. 10, 2022
 Date

