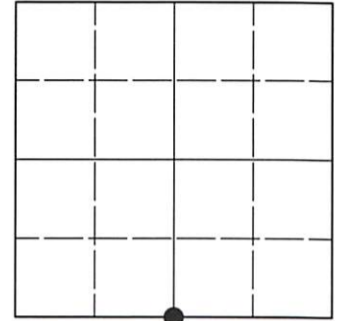


U.S. PUBLIC LAND SURVEY MONUMENT RECORD

Note: This form is intended and designed to fulfill all requirements of Wisconsin Administrative Code, Chapter A-E 7.08 U.S. Public Land Survey Monument Record (3)(a-i).

(a) CORNER LOCATION
 1/4 Cor. of Secs. 8 & 17
 Township 37 North
 Range 4 East of the 4th P.M.
 Town of Lynne
 County of Oneida

WISCRS - Oneida County
 N: 188,599.769 USft
 E: 110,119.639 USft
 Datum: NAD 83(2011) ep. 2010.00
 GNSS Method: RTN - Direct
 GNSS Control: WISCORS VRS



Sec. 8, T. 37 N., R. 4 E.

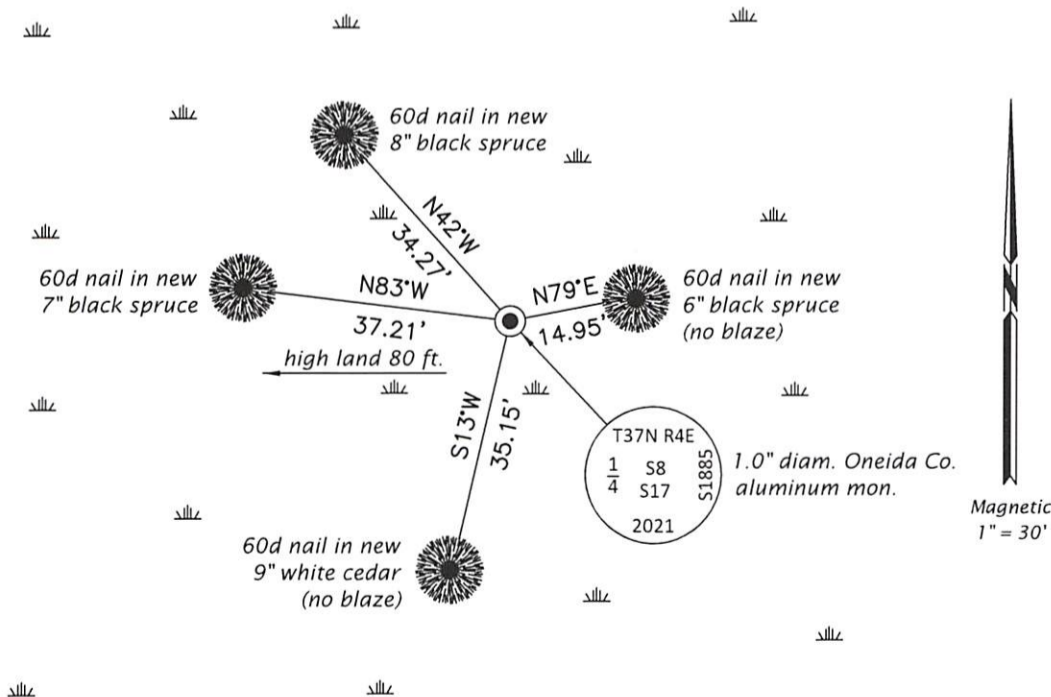
(b)(f)(g)(h) Description of monument found at this corner and if it was accepted, state all evidence (material, testimonial, occupational, plats, records, other monuments) used as a basis for accepting. If not accepted or if nothing was found, state evidence used as basis for establishing location. If re-established through lost corner proportionate methods, indicate all monuments, distances and directions used to establish. Indicate type of monument and sign post found or set.

Oct. 4-13, 1864: GLO survey by Edward D. Palmer, U.S. Deputy Surveyor. S89°50'W corrected between Secs. 8 and 17, at 39.96 chs. set a wood post witnessed by: hemlock 9 N30°E, 19 lks.; hemlock 10 S23°W, 16 lks.

Oct. 23, 2021: An extensive search for prior survey evidence was performed without success. The length of this mile varies by exactly two tallies (660 ft.) when compared to the GLO record. The distance from the creek West to the section corner agrees with the GLO record fairly well, but there are three distinct swamp edges near this corner that are not mentioned in the GLO notes. I searched 7.11 chains (GLO record) West of the creek and found no evidence of the corner. Standing alone, I feel the creek call is insufficient evidence to position the corner. There are numerous examples of topographic calls in the project area that are clearly erroneous. As a result, I determine the corner to be lost and position it by proportionate measure as detailed on the remainder of this record. The resulting location is on an East-West ribboned line running East from the corner point. At the corner point, I set a 1.0" diam., 30" long aluminum pipe with a 2.5" diam. Oneida County aluminum cap flush with the bog surface. A blue DEEP-1 magnet was set adjacent to the monument. Accessories were established as indicated below. A white vinyl sign post bears East, 0.8 ft. dist.

The coordinate value shown has been verified by averaging two or more GNSS observations at markedly different times.

(c)(d)(e) Plan view of corner with ties to at least 4 witness monuments. If in disagreement with previously established corner, show the distances between the two corners and also indicate the ties to the disputed.



REGISTER OF DEEDS OFFICE
 ONEIDA COUNTY
 FILED

APR 21 2022

KYLE J. FRANSON
 REGISTER OF DEEDS

(i) I, Jeffrey W. Austin, Professional Land Surveyor No. S-1885, hereby certify that the corner location on this record was determined by me or under my direction and control and that this U.S. Public Land Survey Monument Record is correct and complete to the best of my knowledge and belief.


 Signature

APR 10, 2022
 Date

