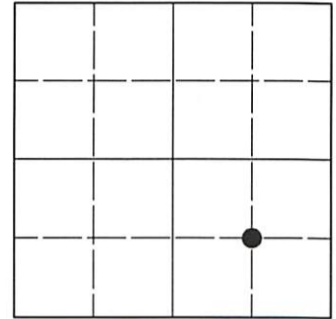


**U.S. PUBLIC LAND SURVEY MONUMENT RECORD**

Note: This form is intended and designed to fulfill all requirements of Wisconsin Administrative Code, Chapter A-E 7.08 U.S. Public Land Survey Monument Record (3)(a-i).

(a) CORNER LOCATION  
 SE 1/16 Cor. of Sec. 8  
 Township 37 North  
 Range 4 East of the 4th P.M.  
 Town of Lynne  
 County of Oneida

WISCRS - Oneida County  
 N: 189,880.739 USft  
 E: 111,258.268 USft  
 Datum: NAD 83(2011) ep. 2010.00  
 GNSS Method: RTN - Direct  
 GNSS Control: WISCRS VRS



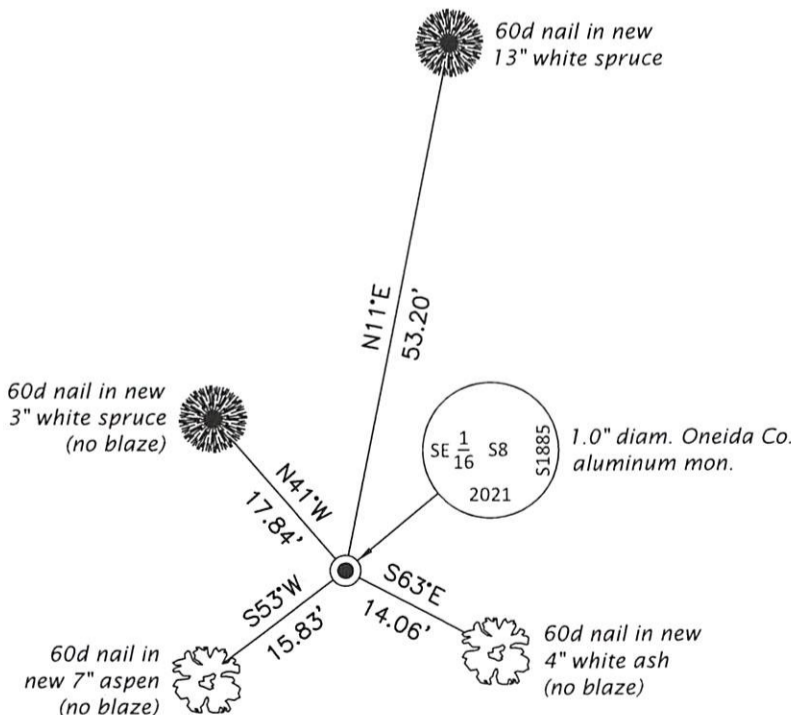
Sec. 8, T. 37 N., R. 4 E.

(b)(f)(g)(h) Description of monument found at this corner and if it was accepted, state all evidence (material, testimonial, occupational, plats, records, other monuments) used as a basis for accepting. If not accepted or if nothing was found, state evidence used as basis for establishing location. If re-established through lost corner proportionate methods, indicate all monuments, distances and directions used to establish. Indicate type of monument and sign post found or set.

Nov. 6, 2021: I was unable to locate record or field evidence indicating this corner was established in prior surveys. As such, I positioned the corner as required by state and federal statutes as depicted on the remainder of this record. At the corner point, I set a 1.0" diam., 30" long aluminum pipe with a 2.5" diam. Oneida County aluminum cap flush with the ground surface. I set a clear DEEP-1 magnet adjacent to the monument. I established accessories as indicated below. A white vinyl sign post bears South, 1.0 ft.

The coordinate value shown has been verified by averaging two or more GNSS observations at markedly different times.

(c)(d)(e) Plan view of corner with ties to at least 4 witness monuments. If in disagreement with previously established corner, show the distances between the two corners and also indicate the ties to the disputed.



REGISTER OF DEEDS OFFICE  
 ONEIDA COUNTY  
 FILED

APR 21 2022

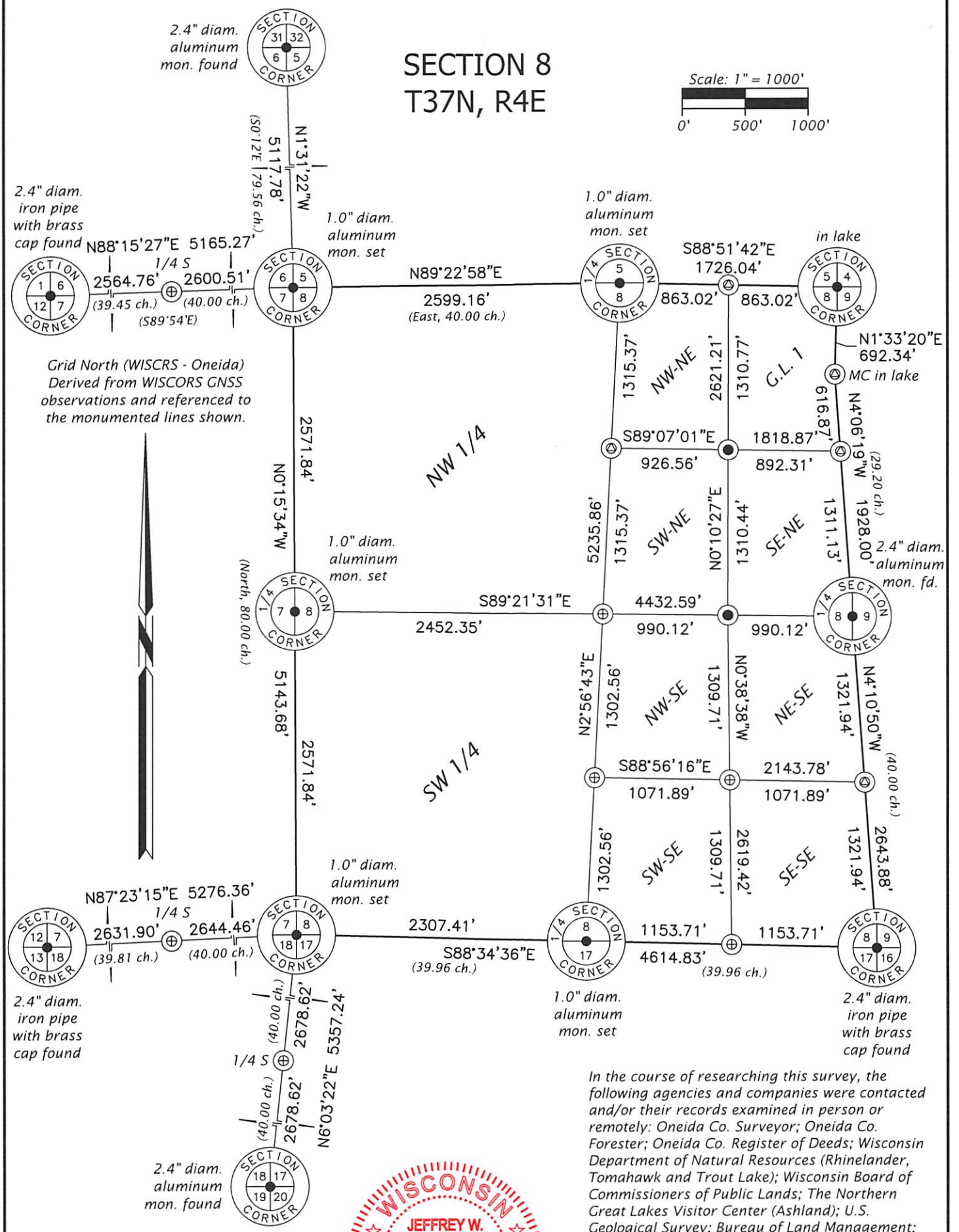
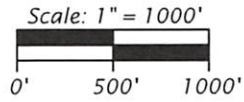
KYLE J. FRANSON  
 REGISTER OF DEEDS

(i) I, Jeffrey W. Austin, Professional Land Surveyor No. S-1885, hereby certify that the corner location on this record was determined by me or under my direction and control and that this U.S. Public Land Survey Monument Record is correct and complete to the best of my knowledge and belief.

  
 Signature

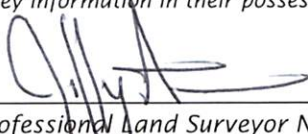
APR 10 2022  
 Date

# SECTION 8 T37N, R4E



In the course of researching this survey, the following agencies and companies were contacted and/or their records examined in person or remotely: Oneida Co. Surveyor; Oneida Co. Forester; Oneida Co. Register of Deeds; Wisconsin Department of Natural Resources (Rhineland, Tomahawk and Trout Lake); Wisconsin Board of Commissioners of Public Lands; The Northern Great Lakes Visitor Center (Ashland); U.S. Geological Survey; Bureau of Land Management; Genisot & Associates, Inc.; Wilderness Surveying, Inc.; Maines & Associates, S.C.

Although unsuccessful, a letter was sent to adjoining landowners requesting copies of private survey information in their possession.

  
Professional Land Surveyor No. S-1885  
Date: APR. 10, 2022



REGISTER OF DEEDS OFFICE  
ONEIDA COUNTY  
FILED

APR 21 2022

KYLE J. FRANSON  
REGISTER OF DEEDS

**LEGEND**

- = 0.8" diam. iron rod set
- ⊙ = computed point, no monument
- ⊕ = 1.0" diam. aluminum mon. set
- ( ) = GLO record measurement