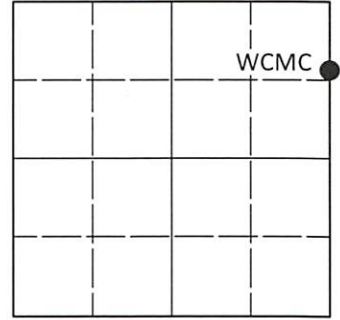


U.S. PUBLIC LAND SURVEY MONUMENT RECORD

Note: This form is intended and designed to fulfill all requirements of Wisconsin Administrative Code, Chapter A-E 7.08 U.S. Public Land Survey Monument Record (3)(a-i).

(a) CORNER LOCATION
 Wit. Meander Cor. of Secs. 8 & 9
 Township 37 North
 Range 4 East of the 4th P.M.
 Town of Lynne
 County of Oneida

WISCRS - Oneida County
 N: 192,653.092 USft
 E: 112,127.822 USft
 Datum: NAD 83(2011) ep. 2010.00
 GNSS Method: RTN - Offset
 GNSS Control: WISCORS VRS



Sec. 8, T. 37 N., R. 4 E.

(b)(f)(g)(h) Description of monument found at this corner and if it was accepted, state all evidence (material, testimonial, occupational, plats, records, other monuments) used as a basis for accepting. If not accepted or if nothing was found, state evidence used as basis for establishing location. If re-established through lost corner proportionate methods, indicate all monuments, distances and directions used to establish. Indicate type of monument and sign post found or set.

Oct. 4-13, 1864: GLO survey by Edward D. Palmer, U.S. Deputy Surveyor. North between Secs. 8 and 9, 69.20 chs. set a wood post witnessed by: hemlock 12 S10°E, 100 lks.; cedar 9 S15°W, 75 lks.

Aug. 31, 1955: On OCS Map No. C-663, Nicholas M. Rowinski identifies the corner as a 2" iron pipe. In reviewing the highly abbreviated field notes of this survey, I believe it's clear that Rowinski thought he located GLO stump evidence at this corner.

Jan., 1973: On OCS Map No. B-740, William S. Cameron identifies corner as iron pipe found witnessed by: 5" maple S60°E, 8.4'; 6" black ash S45°W, 30.0'

Feb. 15, 1995: On OCS Map No. C-1118, Stuart L. Foltz, PLS found a 1-3/4" iron pipe.

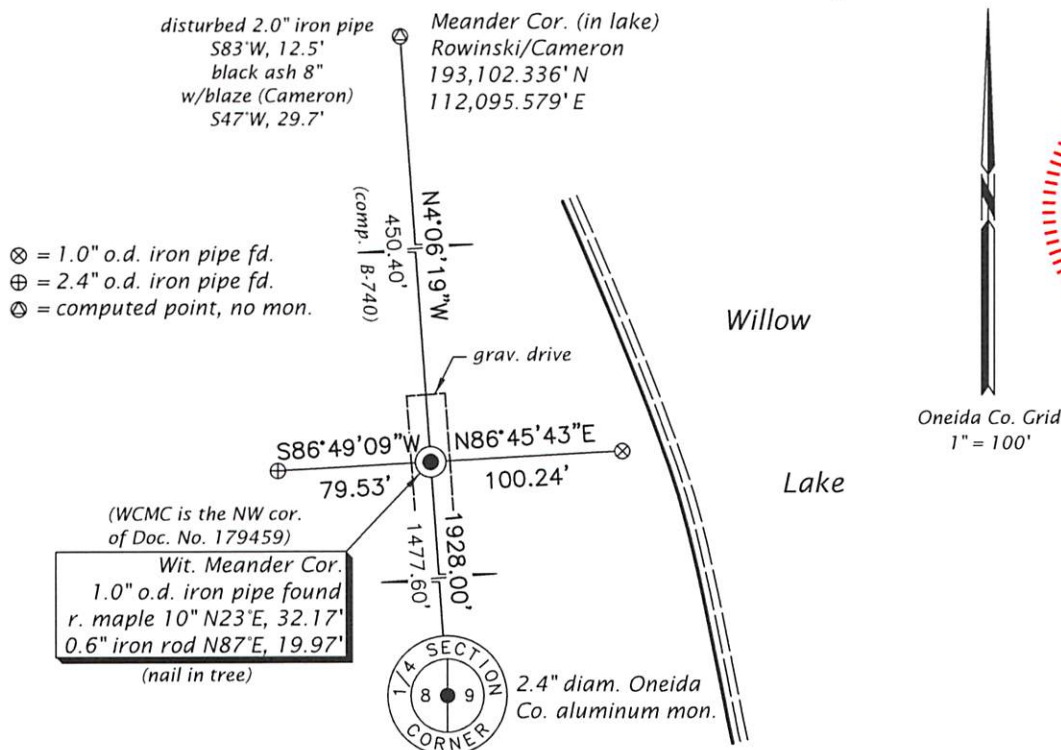
Oct. 15, 2001: On Certified Survey Map No. 2627, David L. Osterbrink, PLS does not identify the monument type.

Dec. 19, 2017: On Certified Survey Map No. 4672, Timothy G. Vreeland, PLS found a 3.385" o.d. iron pipe.

Sep. 28, 2021: I found the record monument, a 2.0" diam. iron pipe projecting from a pushed-up ice ridge adjacent to the lake. It appears the monument has been disturbed since the survey by Rowinski. The measurements from Osterbrink's survey confirm this as the distance from the meander corner to the rear lot line computes about 7 ft. less than that shown on the survey by Cameron. As detailed below, I retraced Cameron's survey to reposition the meander corner and establish an on-line witness corner on solid ground. As the witness corner is in a traveled way, I did not set a sign post.

The coordinate value shown has been determined by traversing from two or more offset points, the coordinates of which are the result of GNSS observations.

(c)(d)(e) Plan view of corner with ties to at least 4 witness monuments. If in disagreement with previously established corner, show the distances between the two corners and also indicate the ties to the disputed.



REGISTER OF DEEDS OFFICE
 ONEIDA COUNTY
 FILED

APR 21 2022

KYLE J. FRANSON
 REGISTER OF DEEDS

(i) I, Jeffrey W. Austin, Professional Land Surveyor No. S-1885, hereby certify that the corner location on this record was determined by me or under my direction and control and that this U.S. Public Land Survey Monument Record is correct and complete to the best of my knowledge and belief.

[Handwritten Signature]
 Signature

APR. 10, 2022
 Date